



Far East Community Area Planning Team

Meeting #8

Zoom

June 27, 2023

3:30 – 5:30 PM



Cambridge Systematics, Inc.
Bowtie
Economic & Planning Systems, Inc.
Auxiliary Marketing Services
Mosaic Planning and Development Services
SJPA

Far East Community Area Project Team



City of San Antonio, Planning Department

David Powell, Project Manager



MIG

Jay Renkens, Principal

Saul Vazquez, Senior Project Associate

Marco Hinojosa, Senior Project Associate (Interim PM)



Cambridge Systematics

Hannah Santiago, Senior Associate

Timeline of Meetings



Draft Vision

The Far East Community Area is comprised of **safe and inviting neighborhoods** with **diverse, quality,** and **affordable** options for housing, dining, shopping, medical services, healthy food, and community gathering spaces, all organized around **quality parks** and the area's own **walkable arts, entertainment** and **shopping** district. Residents of **all ages and incomes** can get around easily using **well-lit** and **well-maintained** sidewalks, trails, bicycle facilities, and transit amenities lined with trees and landscaping, green stormwater treatments, and public art.



Goals

Goal 1: Improve **comfort** and **safety** throughout the area with improved **lighting, signage,** and **enhancement** of parks, trails, sidewalks, and other community assets.

Goal 2: Increase access to **healthy food** and **health care** for all residents.

Goal 3: Facilitate development patterns that include **local employment** and **entertainment** opportunities in one or more mixed use urban centers or arts districts that are **highly walkable** and **connected** and serve as an area destination.

Goal 4: Increase **equitable access** to parks, open space, trails, community gathering facilities, and recreational amenities.

Goal 5: Create housing, employment, goods and services that **serve, support** and are **accessible** to a **variety** of income levels, age groups, and multi-generational households.

Goal 6: Encourage commercial development to be **less auto-oriented and more walkable** and provide a greater diversity of locally serving restaurant and retail options.

Goal 7: Improve **comfort, safety** and **aesthetics** throughout the Far East Area with treelined streets, other urban greening, and integration of sustainable infrastructure.

Goal 8: Expand the amount and variety of **multi-modal networks** throughout the Far East Area.

SA TOMORROW

Draft Mobility Recommendations



Mobility Sites

1

5 WW WHITE RD FROM I-10 TO RIGSBY AVE.

South WW White Road is a Texas Department of Transportation maintained and owned roadway that is five lanes across with a large Right-of-Way along its extent. The primary function of the road is to service businesses and residents who either work or utilize services in the area including VIA bus route 552, 26, 25, and 28. S. WW White Rd. has presented challenges to vehicle, pedestrian, and bike traffic causing several accidents and pedestrian or bike injury and death. Large Right-of-Way along the roadway extends the amount of distance traveled whether on bike or by foot and poses dangers to those who travel in this way. However, this also presents an opportunity to utilize this space to enhance pedestrian, bike, and vehicle mobility to promote a complete street concept that not only services area residents, but limits the challenges in travelling along S. WW White Rd.

2

INTERSECTION OF RIGSBY AVE. AND LOOP 410

The intersection of Rigbsy Avenue and interstate Loop 410 has a high frequency of pedestrian and bike injury and fatalities as well as vehicular accidents. Both roadways are owned and maintained by either the Texas Department of Transportation or United States Department of Transportation. This intersection should promote pedestrian, bike, and vehicle safety through enhanced public spaces and streetscape design while minimizing impacts on vehicle throughput.

3

E. HOUSTON ST. (E OF 410; FM 1346) - FROM IH-10 TO FOSTER RD.

This section of E. Houston Street, or FM 1346, entails a variety of uses ranging from industrial, commercial, and residential areas. This corridor is essential to area residents and industrial properties along this extent and Foster Road. An emphasis on freight traffic and vehicle throughput should be promoted while making enhancements to improve vehicle and freight traffic.

4

MLK DR. - FROM WW WHITE TO IH-10

An important and symbolic neighborhood corridor that connects South WW White Road to the Eastside of San Antonio. Several key assets border this roadway including the Boys and Girls Club, MLK Academy, Salado Creek Greenway Trail, and MLK Park. Prioritization of pedestrian and bike elements should promote walkability and accessibility to these assets, in addition, VIA bus stops. MLK Dr. should consider enhancements to increase sense of place in coordination with local amenities and public spaces.

5

PECAN VALLEY - FROM RIGSBY TO IH-10

Pecan Valley Drive is a major neighborhood thoroughfare that services residents and local amenities. An emphasis on pedestrian and bike safety and elements should be promoted along this corridor to encourage walkability and accessibility to local assets.

6

RICE RD. - FROM WW WHITE TO BROOKSDALE

Rice Road serves as a neighborhood thoroughfare that connects locals to each other and other local amenities. Rice Rd. should be characterized by its neighborhood-centric feel and promote walkability and bikeability throughout the corridor to encourage access to S. WW White Rd. and Wheatley Heights Sports Complex and Salado Creek Greenway Trail.

7

DIANE AVE. - FROM RICE TO RIGSBY

Diane Avenue is a neighborhood thoroughfare that runs through the Delcrest Area Neighborhood Association. This roadway lacks sidewalks while boasting key community assets such as Delcrest Park and Herman Hirsch Elementary School. Enhancing sidewalk connectivity will promote sense of place and enable safe places to walk to local destinations.

8

RIGSBY AVE. - FROM HOLGREEN TO SEMLINGER

Rigbsy Avenue is a high traffic Texas Department of Transportation roadway that sees frequent pedestrian, bike, and vehicle accidents and services a variety of established commercial and residential areas. Prioritization of pedestrian and bike safety should be promoted and enhanced streetscape design to slow vehicles down and minimize the number of driveway outlets.

2022 Bond Projects

1

GREATER LOVE MULTIGENERATIONAL & RECREATION CENTER

Construct Phase 2 facility improvements within available funding which may include the addition of a children's playground.

2

MARTIN LUTHER KING PARK

Construct general park improvements within available funding in support of the Master Plan which may include shade enhancements at the basketball court and additional parking.

3

EASTSIDE CLUBHOUSE (BOYS AND GIRLS CLUBS OF SAN ANTONIO)

Complete a structural assessment and improvements within available funding.

4

WHEATLEY HEIGHTS SPORTS COMPLEX

Construct general and rehabilitation improvements to the existing Sports Complex within available funding, amenities and public spaces.

5

DISTRICT 2 PARKS

Construct general park and rehabilitation improvements of park facilities within available funding. Parks may include: Milam Wesley Tealer Park and Delcrest Park.

6

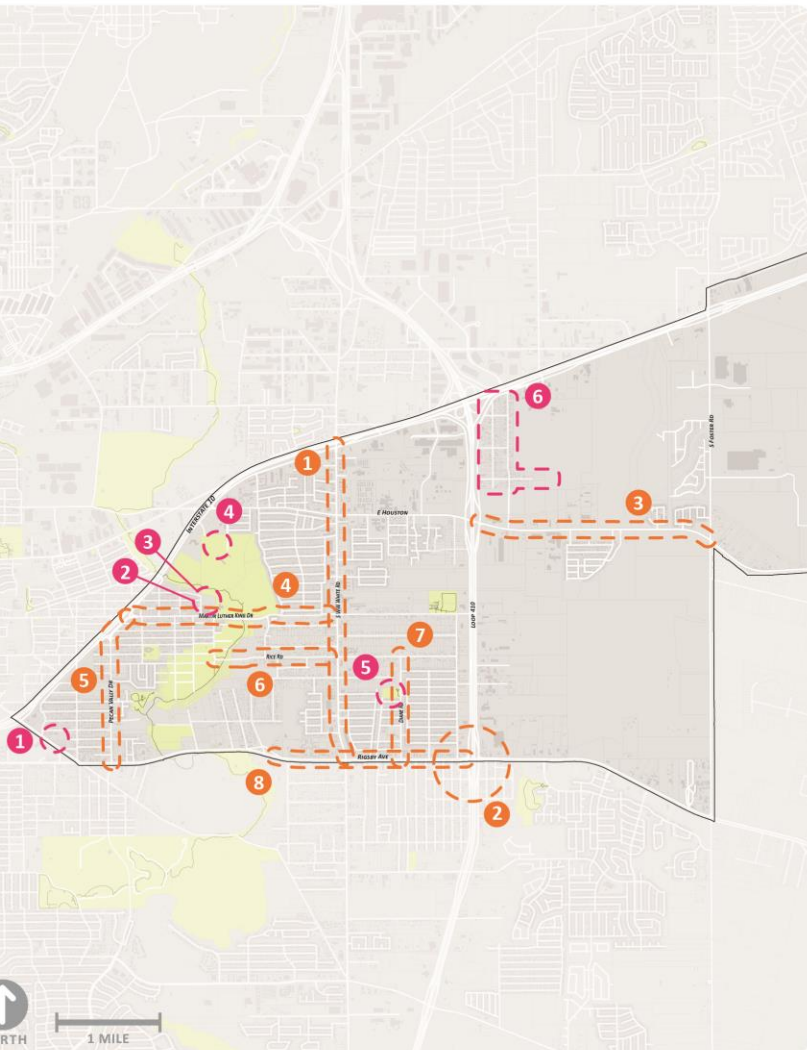
PEGGY DRIVE AREA DRAINAGE (EASTGATE SUBDIVISION)

Complete the regrading of an existing earthen channel and installation of an underground storm drain system and associated roadway reconstruction with curbs, sidewalks, and driveway approaches as applicable and within available funding.

*

DISTRICT 2 PEDESTRIAN MOBILITY

Construct pedestrian mobility improvement projects as applicable and within available funding.

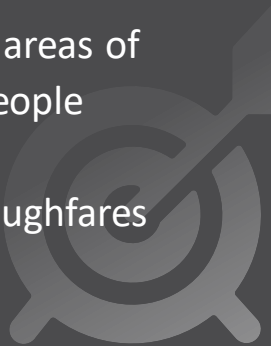


What We've Been Hearing

Mobility Recommendation #1

Strategies

Prioritize **comfortable** and **safe mobility** for all.

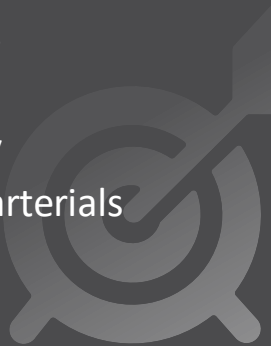
- Continue implementation of Vision Zero strategies (reduced speed limits for neighborhood streets) for key areas of conflicts between people driving, people walking and people bicycling
 - Implement traffic calming opportunities for major thoroughfares
- 
- A faint, light gray target icon with an arrow hitting the bullseye is positioned in the bottom right corner of the slide.

What We've Been Hearing

Mobility Recommendation #2

Strategies

Increase **walkability** and neighborhood **access** through street design.

- Reconnect neighborhoods through pedestrian scale improvements at intersections of highways and arterials
 - Eliminate sidewalk gaps, especially near transit stops, trailheads, schools and neighborhood centers of activity
 - Provide pedestrian crossing opportunities along major arterials
- 
- A faint, light gray target icon with an arrow in the center is positioned in the bottom right corner of the slide.

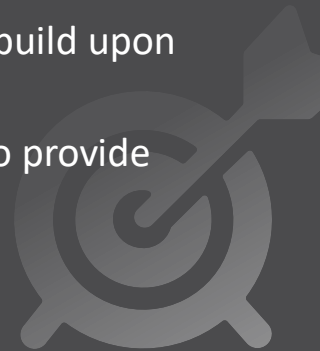
What We've Been Hearing

Mobility Recommendation #3

Strategies

Create **connectivity** through **multi-modal transportation options**.

- Provide contiguous protected bicycle infrastructure to build upon existing Salado Creek Greenway network
- Determine feasibility of park & rides or mobility hubs to provide access to transit for residents living in this area



Martin Luther King Jr



BUFFERED SIDEWALK

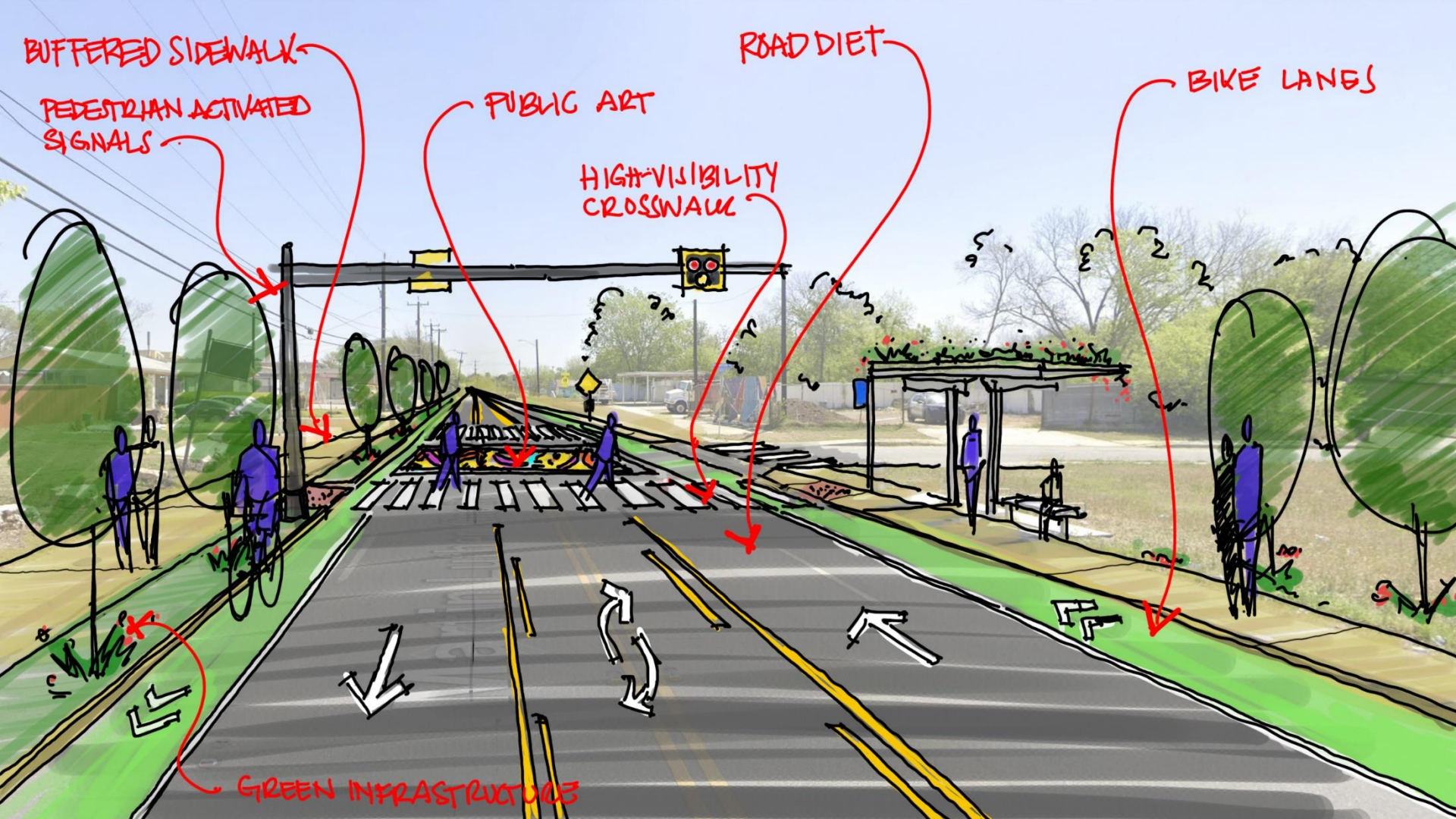
ROAD DIET

BIKE LANES

PEDESTRIAN ACTIVATED SIGNALS

PUBLIC ART

HIGH-VISIBILITY CROSSWALK



GREEN INFRASTRUCTURE

SA TOMORROW

Amenities & Public Spaces
(Continued from PT#7)

What We've Been Hearing

Amenities & Public Space Themes

Walkability and managing green infrastructure as a means to alleviate drainage issues

Opportunity to engage youth

Opportunities to add greenery and public art

Connectivity to local assets

Community Gardens and other healthy food options

Opportunity for entertainment, restaurants, medical services

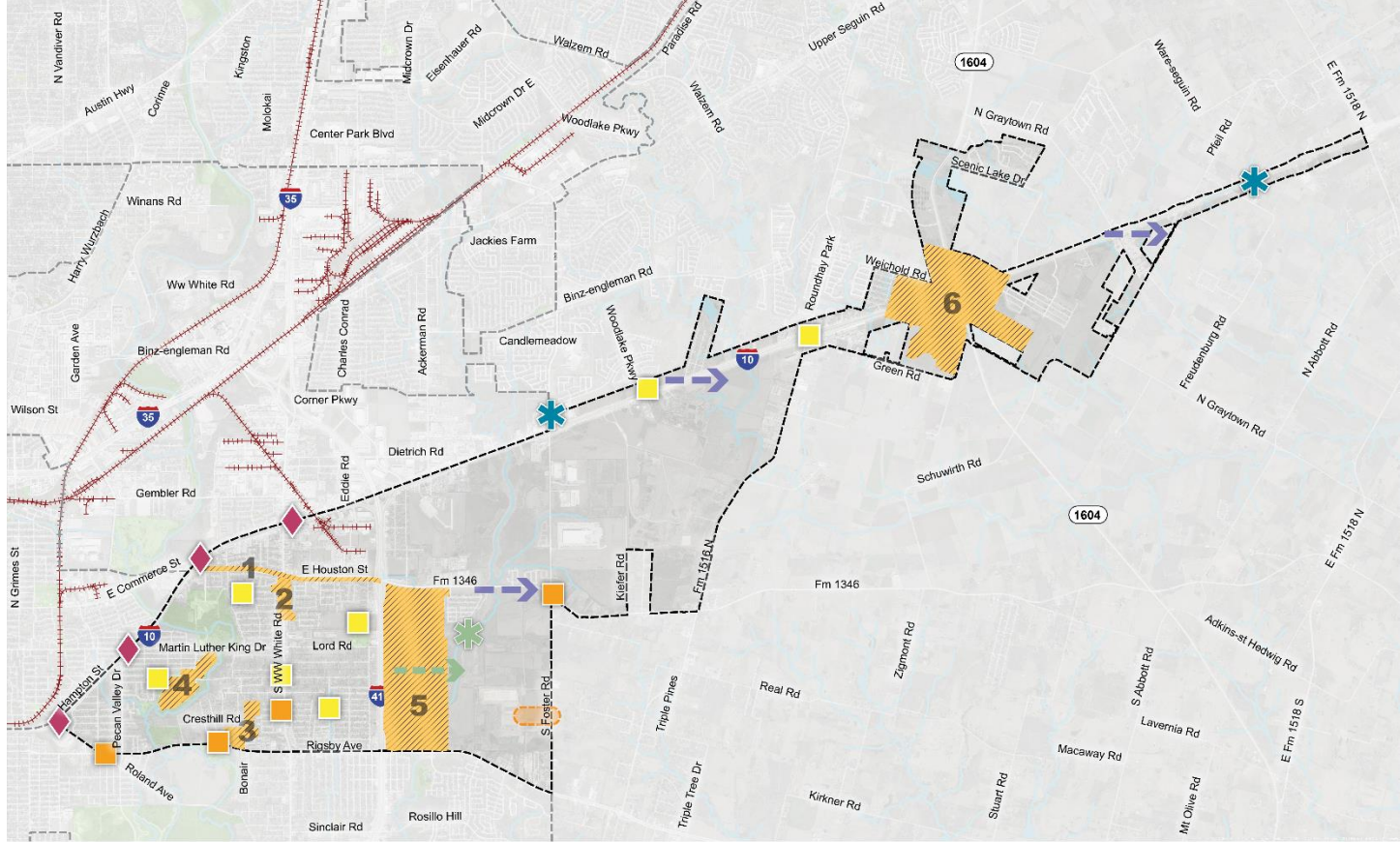
Enhanced VIA Bus access and stops

The creation of "districts" to enhance space and place within a centralized area or space

Identify areas for local public gathering points/hubs

Type of Amenities & Public Spaces

- **PARKS** 
- **PLAZAS** 
- **TRAILS**  / **TRAILHEADS** 
- **SIGNAGE AND WAYFINDING** 
- **IMPROVED LIGHTING** 
- **PEDESTRIAN CROSSINGS** 
- **GREEN INFRASTRUCTURE** 
- **PUBLIC ART** 
- **PRIORITY CONNECTIONS** 
- **CHARACTER DEFINING FEATURES** 



STUDY AREA

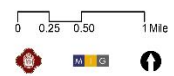
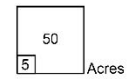
LEGEND

- Community Plan Area Boundary
- Adjacent Regional Center or Community Area
- Focus Areas
- Public or Private Park or Open Space

- River or Stream
- Railroad Line

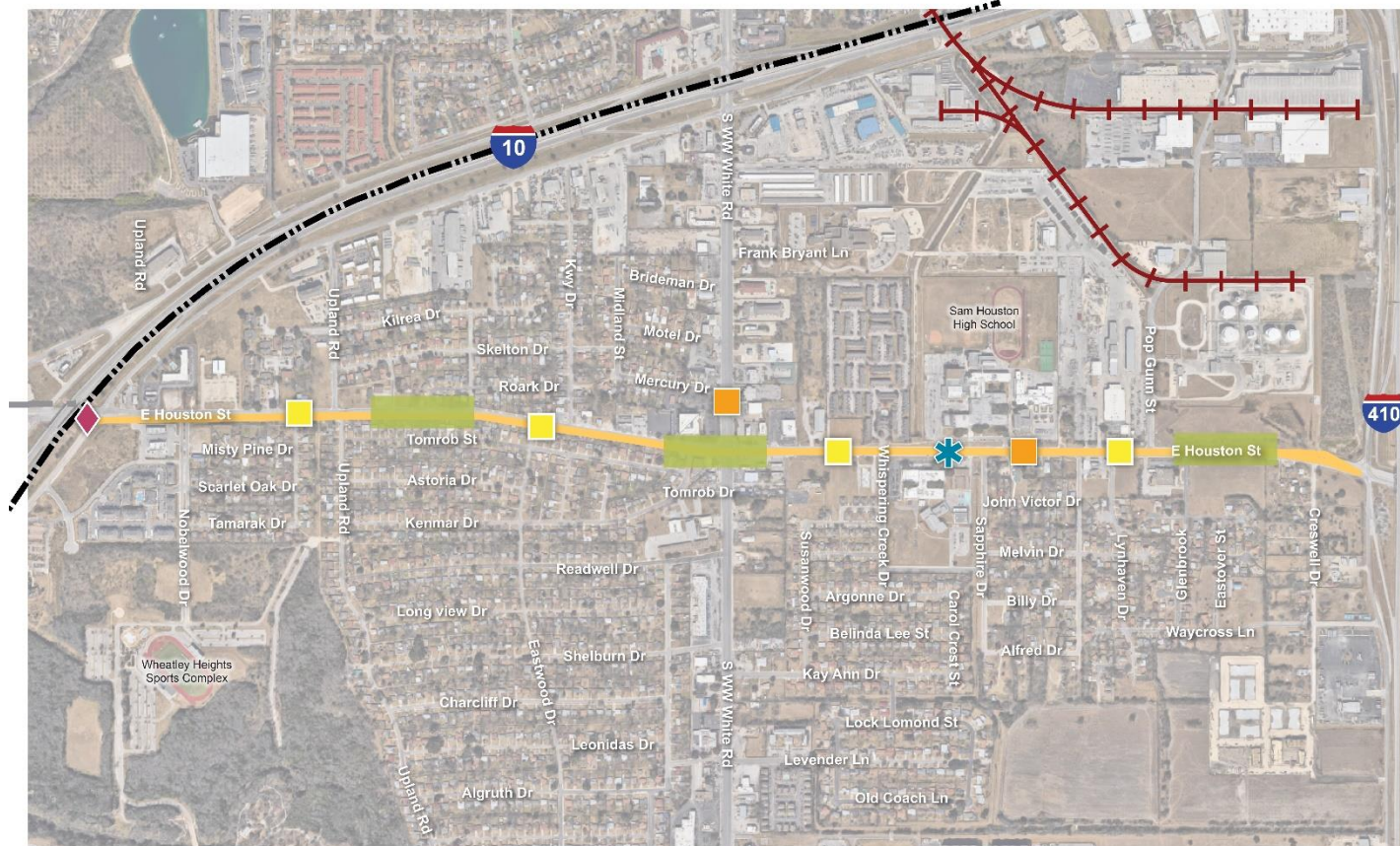
PROPOSED ELEMENTS

- Priority Connections
- Trail
- Character Defining Features
- Public Art
- Signage and Wayfinding
- Trailhead
- Improved Lighting
- Pedestrian Crossing



Draft Amenities & Public Space Recommendations

- **APS Recommendation #1:** Provide trees along sidewalks to beautify streets, provide shade, reduce the urban heat island effect, and improve air quality.
- **APS Recommendation #2:** Create east-west trail connections that intersect with existing north-south connections.
- **APS Recommendation #3:** Increase the amount of lighting at parks and public spaces to allow them to be utilized during more times of the day.
- **APS Recommendation #4:** Establish community gardens at existing parks and open spaces.



**FOCUS AREA 1:
EAST HOUSTON
STREET CORRIDOR**

LEGEND

- Community Plan Area Boundary
- Adjacent Regional Center or Community Area
- Focus Area
- Railroad Line

FOCUS AREA RECOMMENDATIONS

- Proposed Park/Open Space
- Public Art
- Signage and Wayfinding
- Improved Lighting
- Pedestrian Crossing



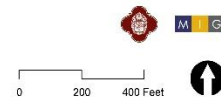
**FOCUS AREA 2:
OLD WW WHITE
ELEMENTARY SCHOOL**

LEGEND

- Community Plan Area Boundary
- Adjacent Regional Center or Community Area
- Focus Area
- Railroad Line

FOCUS AREA RECOMMENDATIONS





- Proposed Park/Open Space
- Character-Defining Features
- Increased Lighting
- Pedestrian Crossing
- Green Infrastructure








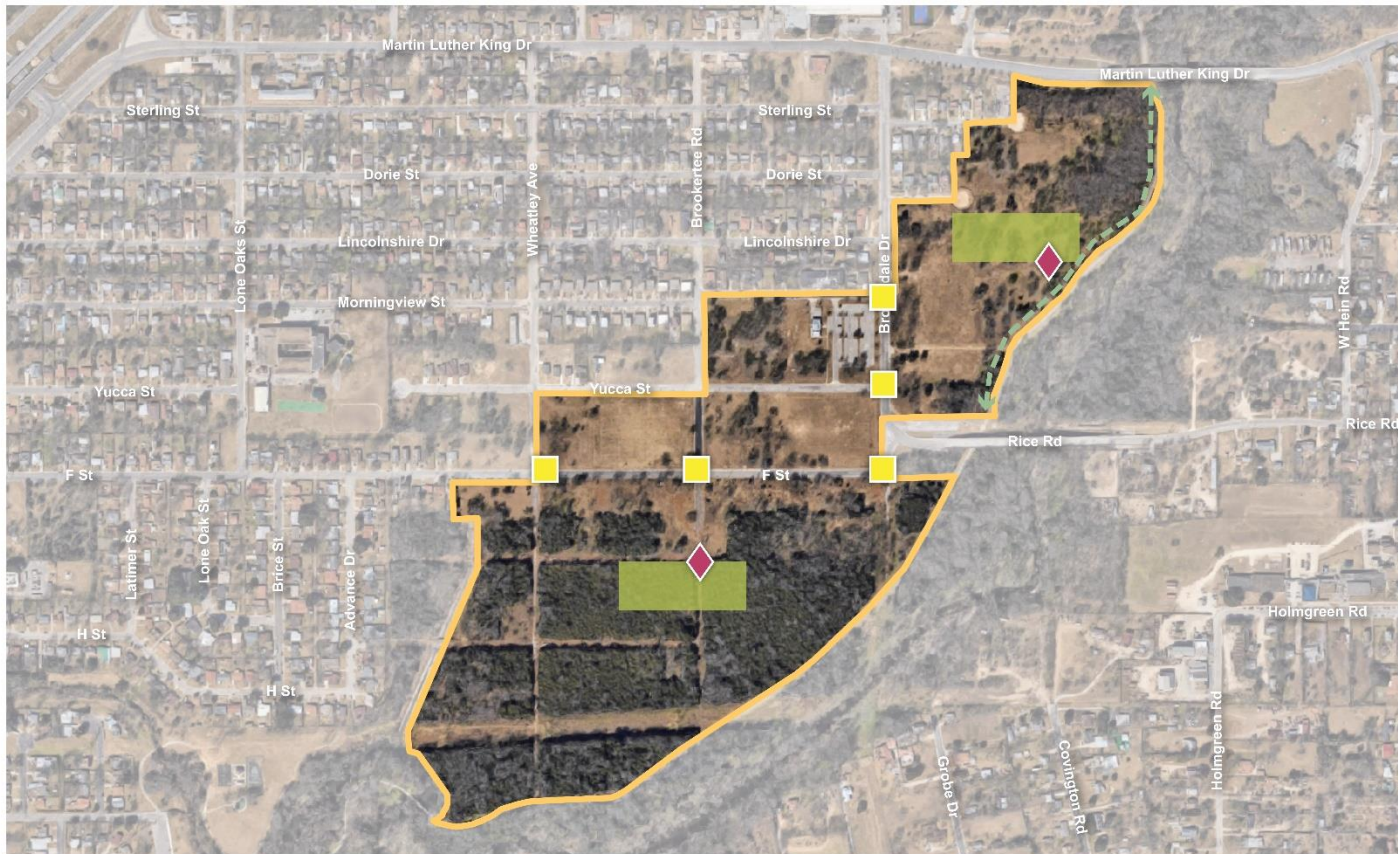
FOCUS AREA 3:
WW WHITE RD
& Q1 D MUNICIPAL LANDFILL SITE

LEGEND

-  Community Plan Area Boundary
-  Focus Area
-  Adjacent Regional Center or Community Area
-  Railroad Line

FOCUS AREA RECOMMENDATIONS

-  Proposed Park/Open Space
-  Public Art
-  Improved Lighting



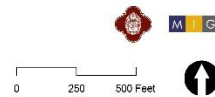
**FOCUS AREA 4:
WHEATLEY
HEIGHTS**

LEGEND

- Community Plan Area Boundary
- Focus Area
- Adjacent Regional Center or Community Area
- Railroad Line
- Trail
- Proposed Parks/Open Space
- Public Art
- Improved Lighting

FOCUS AREA RECOMMENDATIONS





- Trail
- Proposed Parks/Open Space
- Public Art
- Improved Lighting





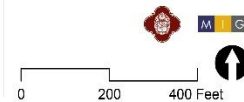
FOCUS AREA 5: EAST LOOP 410

LEGEND

-  Community Plan Area Boundary
-  Adjacent Regional Center or Community Area
-  Focus Area
-  Railroad Line

FOCUS AREA RECOMMENDATIONS

-  Priority Connections
-  Trail
-  Character-Defining Features
-  Signage and Wayfinding
-  Pedestrian Crossing



SA TOMORROW

Digital Design Charrette Graphics
DRAFTS

SA



TOMORROW

Far East

WW White and Houston

DRAFT GRAPHICS

06/27/2023





E. WW WHITE & E. HOUSTON

ITEMS TO NOTE:

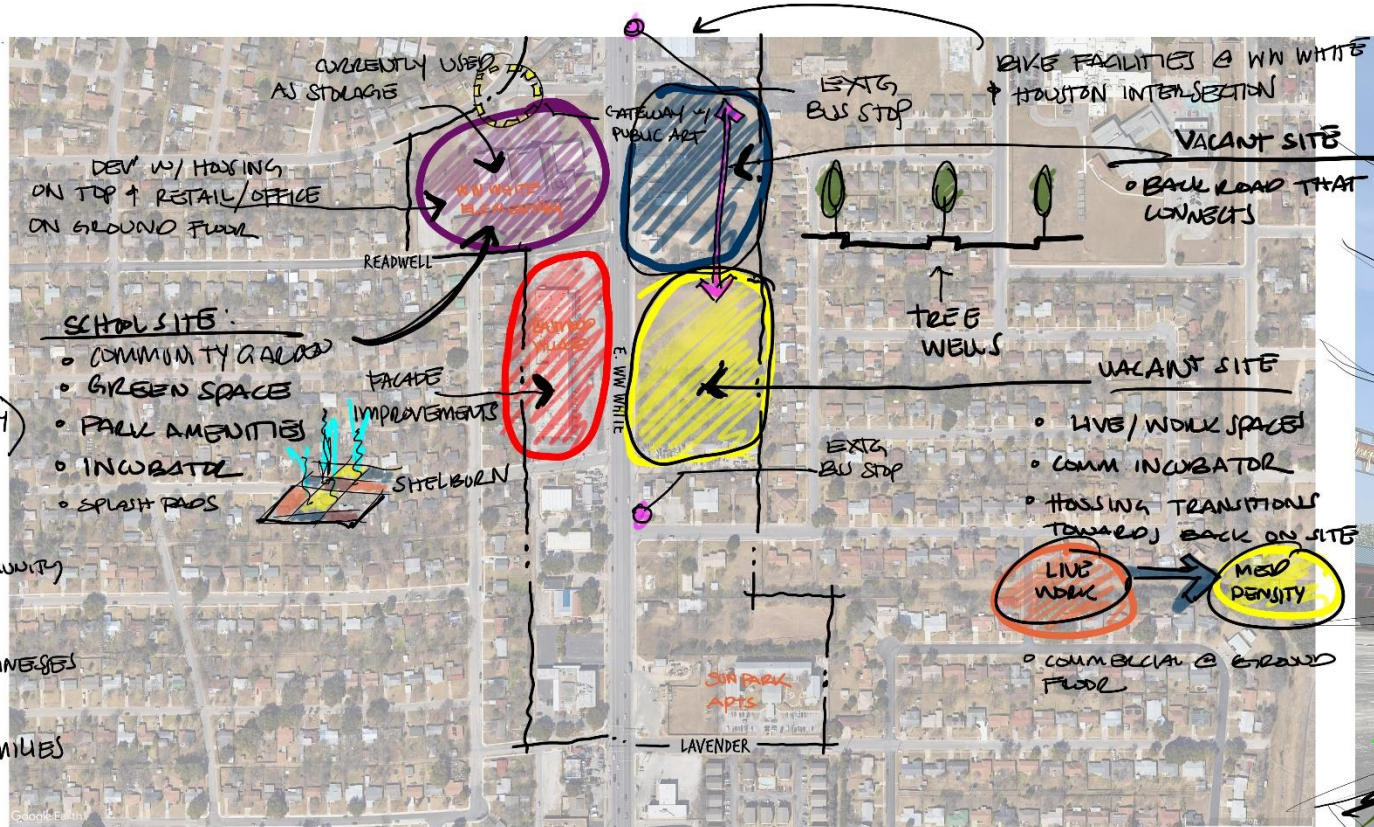
- 17 DEVELOPABLE ACRES
- ADA COMPLIANT TO SMALL LOCAL RETAIL



CONVERT ELEMENTARY TO COMMERCIAL HUB (SMOOTHIES, COMMUNITY GARDEN)



- SMALL BUS/NEW INCUBATOR
- ENTERTAINMENT FOR LOCAL COMMUNITY
 - MUSIC VENUE
 - INDOOR/OUTDOOR
- FACADE IMPROVEMENTS OF LOCAL BUSINESSES
 - EASTWOOD VILLAGE
- RECREATION AREAS FOR YOUTH/FAMILIES
 - PUT PUT GOLF
 - BOWLING ALLEY



MOBILITY

- PROTECTED BIKE LANES ALONG NW WHITE
- ENHANCED SIDEWALKS
- ADDITION OF BUS STOPS TO AUGMENT



EXISTING



DRAFT



EXISTING



PROPOSED



SA TOMORROW

Far East

Loop 410 and Rosillo Creek

DRAFT GRAPHICS

06/27/2023

410

1-410 Access Rd

5511

Saints Gate Dr

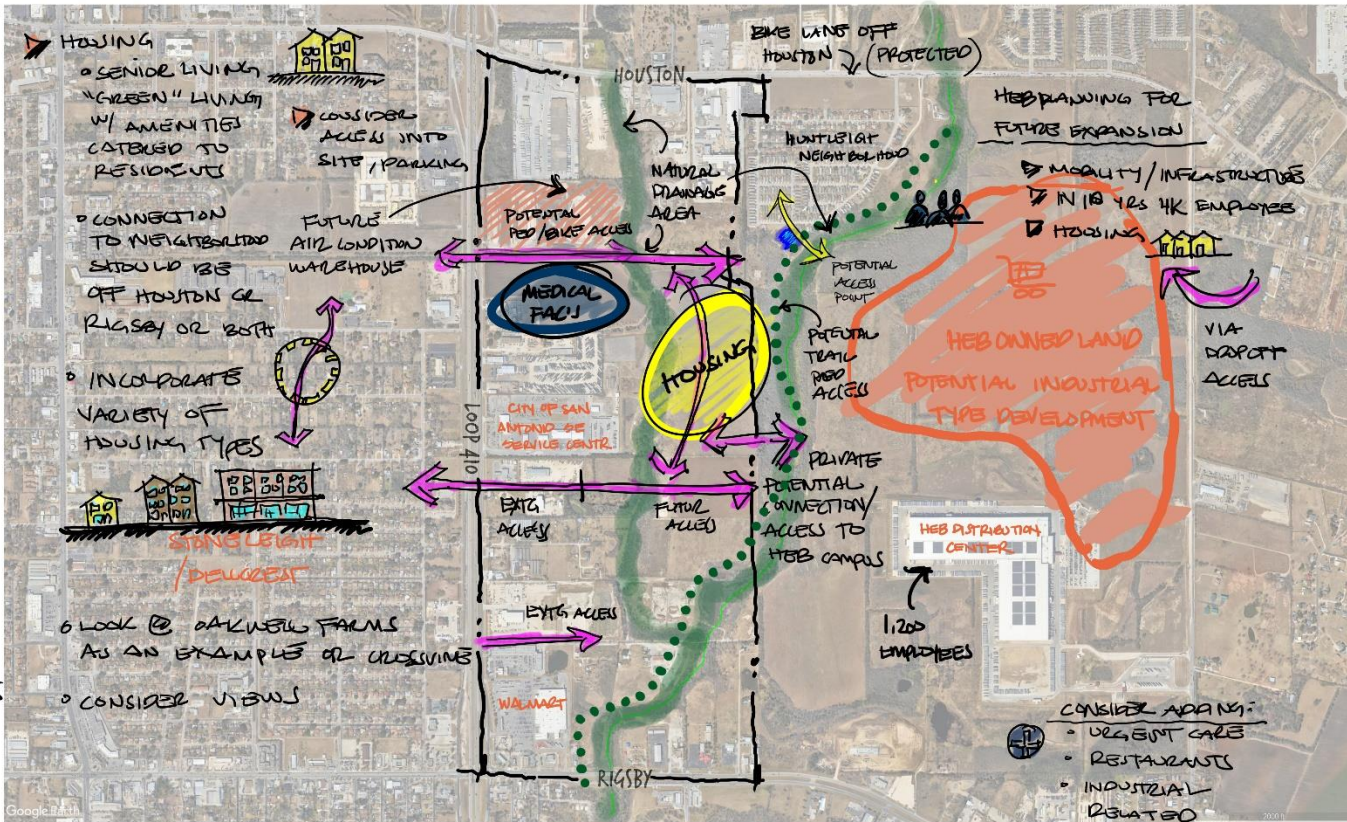
Saints Arc Dr



E. LOOP 410 & ROSILLO CREEK

ITEMS TO NOTE:

- ~180 ACRES
- ADJACENT TO INDUSTRIAL/COMMERCIAL
- ROSILLO CREEK GREENWAY
- HEB OWNED LAND EAST OF CREEK W/ PROPOSED DEN'
- POTENTIAL DEVELOPMENT
 - ENTERTAINMENT TYPE DEV'
 - RESTAURANTS
 - CHILD-CARE FACILITIES
 - CONSIDER PLACEMENT OF TRANSIT
 - "MINI" OUTDOOR MALL / SHOPPING CENTER W/ RESTAURANTS & SERVICES / COLLABORATIVE AREA
 - MAINTAIN NATURAL BUFFER THAT ENJOYS CREEK
 - CREEK TRAILS / BIKE SHARE
 - PROVIDE OPTIONS FOR MULTIPLE MODALITY MODES (BIKES, PEDS)
 - MEDICAL FACILITIES (HOSPITAL) +
 - FITNESS CENTER
 - WOODLAKE + TB LOOK AT
 - TRAFFIC GARDENS
 - INNOVATIVE WAYS TO GET KIDS WALKING / BIKING TO SCHOOL



• INDOOR/OUTDOOR RECREATION AREAS

• AREA FOR SOCCER / FOOTBALL / FRISBEE

CONSIDER ADJACENT:

- URGENT CARE
- RESTAURANTS
- INDUSTRIAL RELATED

EXISTING



DRAFT



ROSILLO CREEK

I-410 ACCESS Rd

CONNALLY LOOP

DRAFT

ACKERMAN CREEK

ROSILLO CREEK

CONNALLY LOOP



EXISTING



Call us today
to schedule
a site visit
830-708-1340
www.blackburn.com
200-561-8969

MAINTENANCE
SCHEDULE

PROPOSED



Next Steps

NEXT PLANNING TEAM MEETING(S):

- Planning Team Meeting #9 – July 31, 2023
- Planning Team Meeting #10 – August 21, 2023

QUESTIONS?

David Powell,
City of San Antonio
David.Powell@SanAntonio.gov
(210) 207-0244



Far East Community Area Planning Team

Meeting #8

Zoom

June 27, 2023

3:30 – 5:30 PM



Cambridge Systematics, Inc.
Bowtie
Economic & Planning Systems, Inc.
Auxiliary Marketing Services
Mosaic Planning and Development Services
SJPA