

## PLANNING TEAM MEETING #10 SUMMARY

### Far East Community Area Plan

**Meeting Date:** August 21, 2023  
**Time:** 3:30 pm – 5:30 pm  
**Location:** Zoom

#### Planning Team Attendees

Anita Franklin, Dellcrest Area Neighborhood  
Christine Vina, VIA  
Jessica Sifuentes, VIA  
Kizzie Thomas, Essence Prep Public School  
Tina Beecham, Black Girls do Bike; PedalSATX  
Alberta Harris, Eastside Advocate  
Uche Ogba, EHCUC Marketing Agency

Dwayne Robinson, MLK Commissioner  
David Arciniega, CoSA Parks Department  
Lindsey Logan, SAGE

#### Planning Staff & Consultant Team

Marco Hinojosa, Senior Project Associate (MIG)  
Dave Powell, Project Manager (CoSA)  
Chris Ryerson, Planning Administrator (CoSA)  
Gretchen Roufs, A-M-S

Jay Renkens, Principal (MIG)  
Hannah Santiago, Regional Manager  
(Cambridge Systematics)

#### Meeting Objectives:

The purpose of the 10th Planning Team Meeting was to review the draft Far East Digital Design Charette's, overview changes to the draft Amenities and Public Space recommendations and strategies, highlight the results of the draft map graphics associated with each focus area, mobility, and Amenities and Public Spaces, and identify an implementation strategy for key priorities within the Far East Community Area Plan.

#### Meeting Format

The meeting began with a recap of the previous Planning Team Meeting #9 as well as a brief introduction of the Project Team and Planning Team Members. We then went over the meeting objectives and reviewed the draft goals and vision. Next, Jay Renkens, discussed changes to the draft Digital Design Charette's based on previous Planning Team feedback where members were granted the opportunity to provide further input. Jay then overviewed revised draft Amenities and Public Spaces recommendations and strategies where Planning Team Members provided feedback and comment. Thereafter, Jay, presented on updated plan maps for each focus area, Mobility, and Amenities and Public Spaces. From the map showcasing, Jay overviewed the overall Plan Framework Map and discussed priority elements for the Far East Community Area based on previous Planning Team and

community feedback. The Planning Team was then asked to provide additional input regarding the Plan Framework Map. We then showcased the initial Implementation of the Plan Framework Map that highlights key stakeholders, funders, and timelines for each priority recommendation within the Far East Community Area Plan. Planning Team members were then asked to complete the matrix with applicable information pertaining to each recommendation. The Project Manager then concluded the meeting and provided next steps within the planning process.

### Draft Digital Design Charette (DDC) Discussion

#### Draft WW White Rd and E. Houston St.:



**Planning Team Comments for WW White Rd. and E Houston St. DDC:**

- Townhomes under the work view – make this upscale like by Redberry Mansion.

**Draft East Loop 410 and Rosillo Creek:**



**Planning Team Comments for East Loop 410 and Rosillo Creek DDC:**

- Add other entertainment piece here that is family-centric.



**Draft Amenities and Public Spaces Recommendations and Strategies:**

**Draft Recommendation 1: Provide trees along sidewalks to beautify streets, provide shade, reduce the urban heat island effect, and improve air quality.**

**Draft Supporting Strategies:**

- APS Strategy 1.1: Incorporate trees into streetscape enhancements and improvements.
- APS Strategy 1.2: Encourage planting of trees along the back of sidewalks on private property.
- APS Strategy 1.3: Create a neighborhood planting program to plant new trees and maintain existing ones.
- APS Strategy 1.4: Educate private property owners about responsibilities and best practices for maintenance of trees, landscaping, and sidewalks.

**Draft Recommendation 2: Create east-west trail connections that intersect with existing north-south connections.**

**Draft Supporting Strategies:**

- APS Strategy 2.1: Create new and enhance existing trail connections to allow all Far East residents to safely access parks and community facilities.
- APS Strategy 2.2: Prioritize trail connections that allow residents to efficiently and safely access key destinations like schools and grocery stores by foot or bike.
- APS Strategy 2.3: Enhance connections to and access points along existing and future trails.

**Draft Recommendation 3: Increase the amount of lighting at parks and public spaces to allow them to be utilized during more times of the day.**

**Draft Supporting Strategies:**

- APS Strategy 3.1: Conduct a lighting study to identify gaps and potential improvements.
- APS Strategy 3.2: Work with developers to enhance lighting around public areas as part of new developments.
- APS Strategy 3.3: Integrate improved lighting into park maintenance and improvement projects.

**Draft Recommendation 4: Establish and preserve community gardens at existing parks and open spaces.**

**Draft Supporting Strategies:**

- APS Strategy 4.1: Create programs to educate residents on how to effectively maintain and start a community garden, and about the health benefits they provide.
- APS Strategy 4.2: Connect residents to resources and supplies to create community gardens.
- APS Strategy 4.3: Identify potential locations and potential partners to create community gardens to help ensure that all Far East residents have equitable access to healthy food.







**SA TOMORROW**  
For East  
COMMUNITY  
AREA PLAN

**FOCUS AREA 2:  
OLD WW WHITE  
ELEMENTARY SCHOOL**

**LEGEND**

- Community Plan Area Boundary
- Adjacent Regional Center or Community Area
- Focus Area
- Railroad Line

**FOCUS AREA RECOMMENDATIONS**

- Proposed Park/Open Space
- Charter/Delisting Features
- Public Art
- Improved Lighting
- Pedestrian Crossing
- Green Infrastructure

0 200 400 Feet



**SA TOMORROW**  
For East  
COMMUNITY  
AREA PLAN

**FOCUS AREA 3:  
WW WHITE RD  
& C.D. McMILLER LANDFILL SITE**

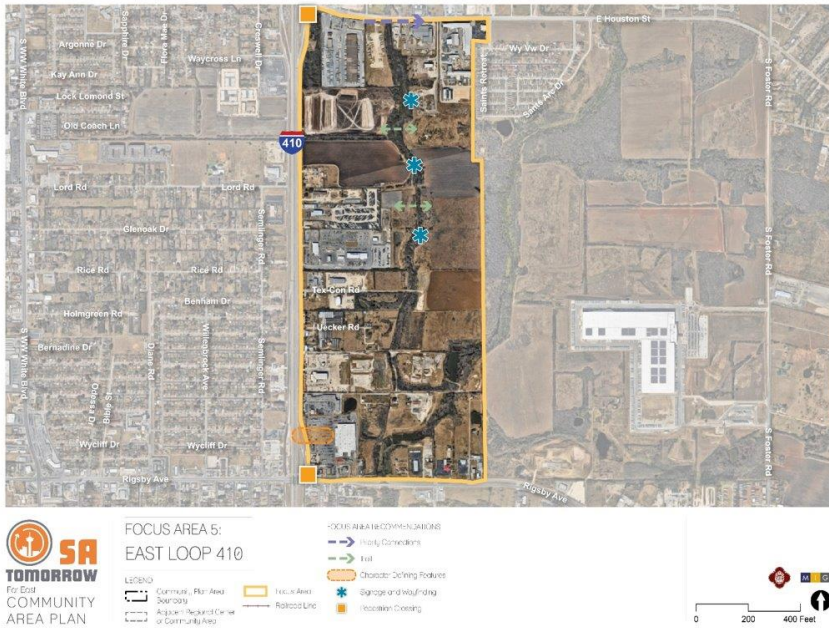
**LEGEND**

- Community Plan Area Boundary
- Adjacent Regional Center or Community Area
- Focus Area
- Railroad Line

**FOCUS AREA RECOMMENDATIONS**

- Proposed Park/Open Space
- Public Art
- Improved Lighting

0 200 400 Feet





**SA TOMORROW**  
For East COMMUNITY AREA PLAN

**FOCUS AREA 6:  
LOOP 1604  
AND I-10**

**FOCUS AREA COMMUNICATIONS**

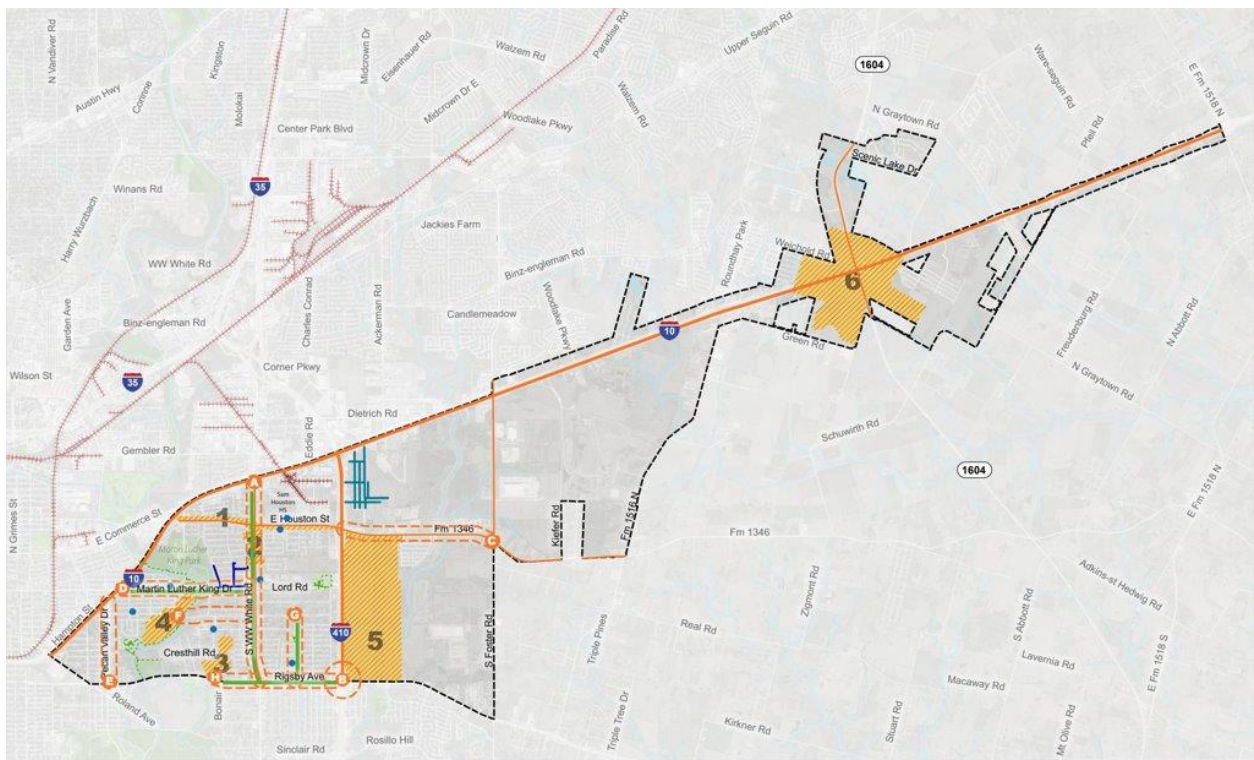
- Priority Corridors
- Proposed Rail
- Proposed Pedestrian Space
- Charitable Dealing Features
- Pedestrian Crossing
- Open Infrastructure

**LEGEND**

- Community Plan Area Boundary
- Adjacent Regional Center or Community Area
- Public or Private Park or Open Space
- Focus Area
- Railroad Line
- Public Schools
- Public Libraries
- Storage and Wrecking

Scale: 0 500 1,000 Feet

**Mobility Map:**



**SA TOMORROW**  
For East COMMUNITY AREA PLAN

**MOBILITY AREAS**

- 1 WW White Rd from Rigby to I-10
- 2 Intersection of Rigby Ave and Loop 410
- 3 E Houston St E of 410, FM 1346 from Loop 410 to Foster Rd
- 4 MLK Dr from WW White to I-10
- 5 Pecan Valley from Rigby to I-10
- 6 Rice Rd from WW White to Brookside
- 7 Dione Ave from Rice to Rigby
- 8 Rigby Ave from Hoggreen to Satterlee

**PROPOSED ELEMENT**

- Pedestrian Crossing
- Walk/Bike Trail Extension

**LEGEND**

- Community Plan Area Boundary
- Adjacent Regional Center or Community Area
- Public or Private Park or Open Space
- River or Stream
- Railroad Line
- Focus Areas
- Public Schools
- Public Libraries

Scale: 0 0.25 0.50 1 Mile

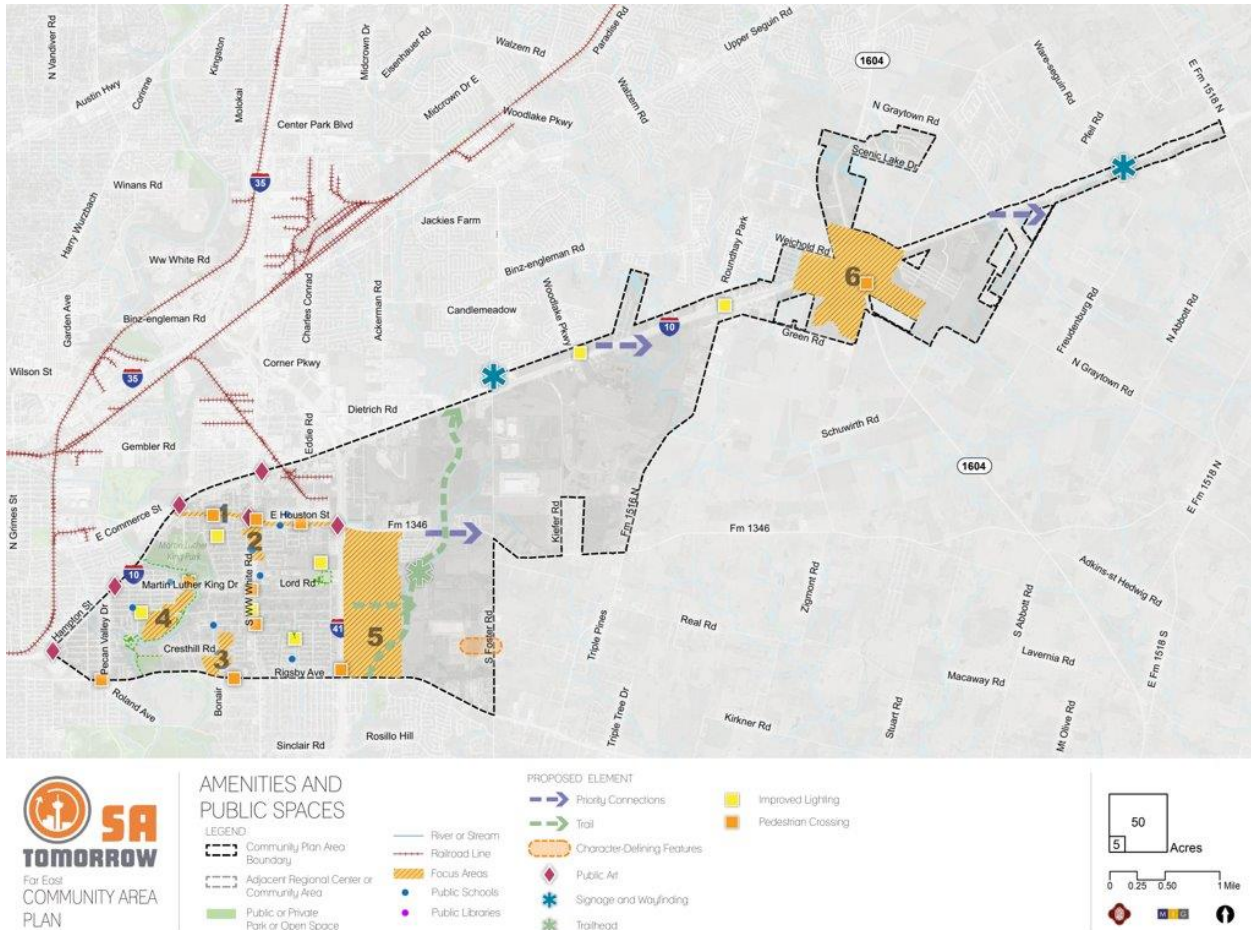
**CITY OF SAN ANTONIO PLANNING**



**Mobility Map Comments:**

- Add private schools to map.
- Show connection between focus area 1 and focus area 5 to promote connectivity to mobility hub.

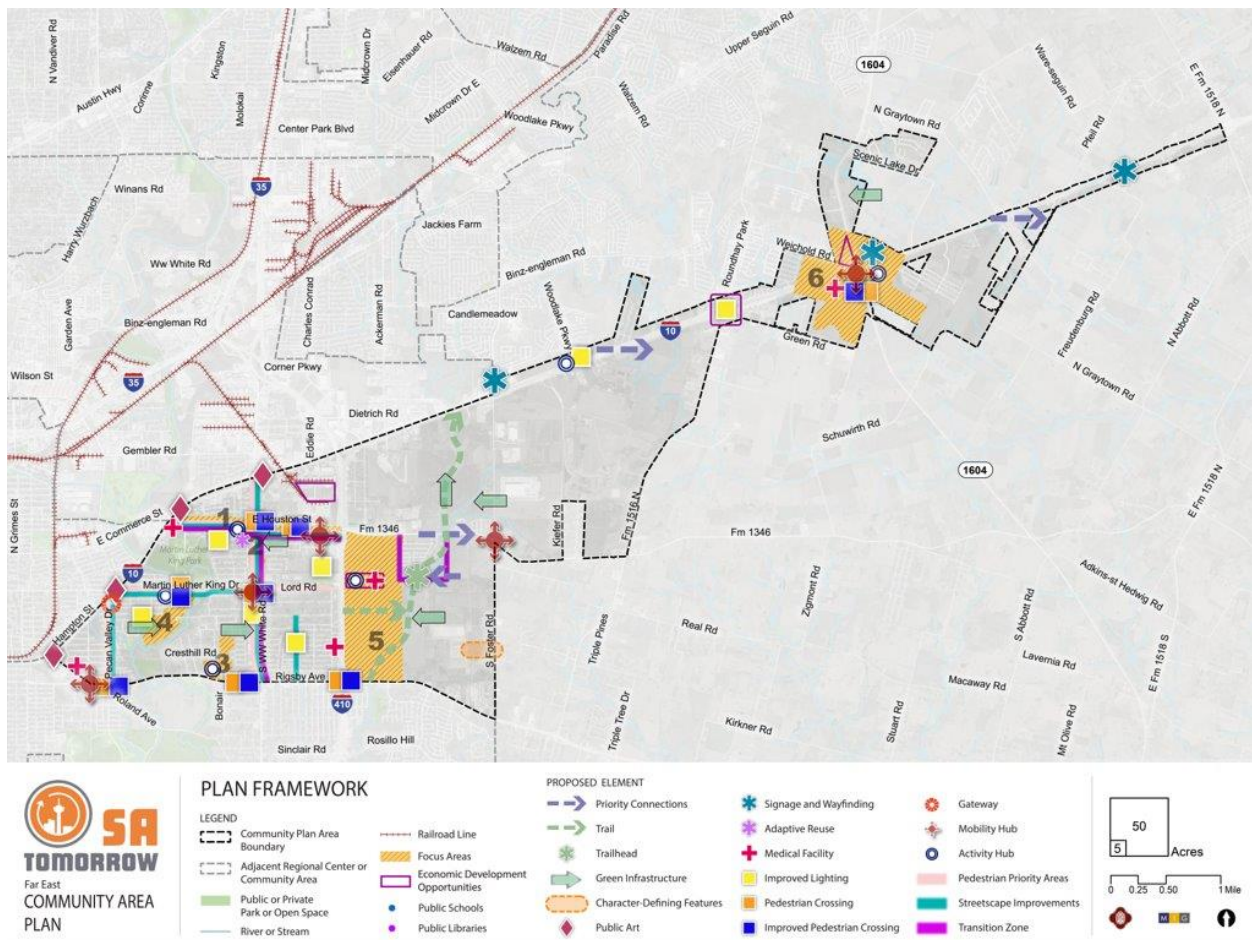
**Amenities and Public Spaces:**



**Amenities and Public Spaces Comments:**

- Add private schools to map.
- Show east-west connection on map.
- Add more family-centric public space elements to map.

**Draft Plan Framework Map:**



**Plan Framework Map Comments:**

- Define medical facilities better and add different types of medical.

**Implementation of the Plan Framework Map:**

**Please view the Mural Board notes from Planning Team Meeting 10 to review comments received from the Planning Team.**

**Next Steps**

- **Public Draft Release of the Far East Community Area Plan** – Fall/Winter
- **Community-Wide Open House** – Early 2024

The meeting summary and presentation will be shared to the Documents Library on the Far East Community Plan Area website in the coming days: <https://fareast.sacomplan.com/> Please contact the project manager if you have any questions.

**Project Manager:** David Powell, City of San Antonio Planning Department

**Email:** [David.Powell@sanantonio.gov](mailto:David.Powell@sanantonio.gov) **Phone:** (210) 207-0244

