



Far East Community Area Planning Team

Meeting #10

Monday, August 21, 2023

Zoom

3:30 – 5:30 PM



Cambridge Systematics, Inc.
Bowtie
Economic & Planning Systems, Inc.
Auxiliary Marketing Services
Mosaic Planning and Development Services
SJPA

Far East Community Area Project Team



City of San Antonio, Planning Department

David Powell, Project Manager



MIG

Jay Renkens, AICP, Principal

Marco Hinojosa, Senior Project Associate (Interim PM)



Cambridge Systematics

Hannah Santiago, Senior Associate

Timeline of Meetings

PT Meeting 1 (Apr. 25th 2022)

Orientation; Sub-Area Plan Overview; SWOT; Vision and Goals

Community Meeting 1 (June 21st 2022)

PT Meeting 2 (Jul. 18th 2022)

Confirm Vision & Goals; Land Utilization Analysis; Focus Area ID

PT Meeting 3 (Aug. 15th 2022)

Land Use (Housing & Economic Development Lens) (1 of 2)

PT Meeting 4 (Sept. 19th 2022)

Housing & Economic Development (Based on Land Use) (1 of 2)

Community Meeting 2 (Nov. 17th 2022)

PT Meeting 5 (Dec. 12th 2022)

Land Use (2 of 2), Housing and Economic Development (2 of 2)

PT Meeting 6 (Feb. 13th 2023)

Mobility (1 of 2)

PT Meeting 7 (Mar. 13th 2023)

Focus Areas, Amenities & Public Space

Digital Design Charette (DDC) Workshop

Community Meeting 3 (May 23rd 2023)

PT Meeting 8 (Jun. 27th 2023)

Mobility, Amenities & Public Space , DDC

PT Meeting 9 (Jul. 31st 2023)

Review of Maps, Plan Framework, NPP (1 of 2)

PT Meeting 10 (Aug. 21st 2023)

Plan Framework (2 of 2), Implementation Review

Community Meeting 4 (TBD - Week of Feb.12th 2024)

PT Meeting 11 (Feb. 26th 2024)

Public Draft Review & Final Revisions, Process Feedback

WE ARE HERE

Meeting Objectives

- 1. Reintroduction of Digital Design Charette Graphics**
Review the updated graphics created from the digital design charrette and reviewed during PT meeting #8.
- 2. Reintroduction of APS Recommendations and Strategies**
Review and confirm edits to recommendations and strategies presented during PT#9.
- 3. Reintroduction of Individual Plan Elements Maps**
Review the updated land use, focus area, APS, and mobility maps.
- 4. Introduction of Draft Plan Framework Map**
Introduce the Plan Framework Map and provide input on the elements shown.
- 5. Discussion of Implementation Strategy**
Begin to identify key stakeholders, timing, and funding strategies.



MLK Dr. Mural

Draft Vision

The Far East Community Area is comprised of **safe and inviting neighborhoods** with **diverse, quality,** and **affordable** options for housing, dining, shopping, medical services, healthy food, and community gathering spaces, all organized around **quality parks** and the area's own **walkable arts, entertainment** and **shopping** district. Residents of **all ages and incomes** can get around easily using **well-lit** and **well-maintained** sidewalks, trails, bicycle facilities, and transit amenities lined with trees and landscaping, green stormwater treatments, and public art.



Goals

Goal 1: Improve **comfort** and **safety** throughout the area with improved **lighting, signage,** and **enhancement** of parks, trails, sidewalks, and other community assets.

Goal 2: Increase access to **healthy food** and **health care** for all residents.

Goal 3: Facilitate development patterns that include **local employment** and **entertainment** opportunities in one or more mixed use urban centers or arts districts that are **highly walkable** and **connected** and serve as an area destination.

Goal 4: Increase **equitable access** to parks, open space, trails, community gathering facilities, and recreational amenities.

Goal 5: Create housing, employment, goods and services that **serve, support** and are **accessible** to a **variety** of income levels, age groups, and multi-generational households.

Goal 6: Encourage commercial development to be **less auto-oriented and more walkable** and provide a greater diversity of locally serving restaurant and retail options.

Goal 7: Improve **comfort, safety** and **aesthetics** throughout the Far East Area with treelined streets, other urban greening, and integration of sustainable infrastructure.

Goal 8: Expand the amount and variety of **multi-modal networks** throughout the Far East Area.

SA TOMORROW

Updated Digital Design Charette
Graphics

SA TOMORROW

Far East: Focus Area 1 – WW White
and Houston



PT#8 Meeting Version



Updated Version



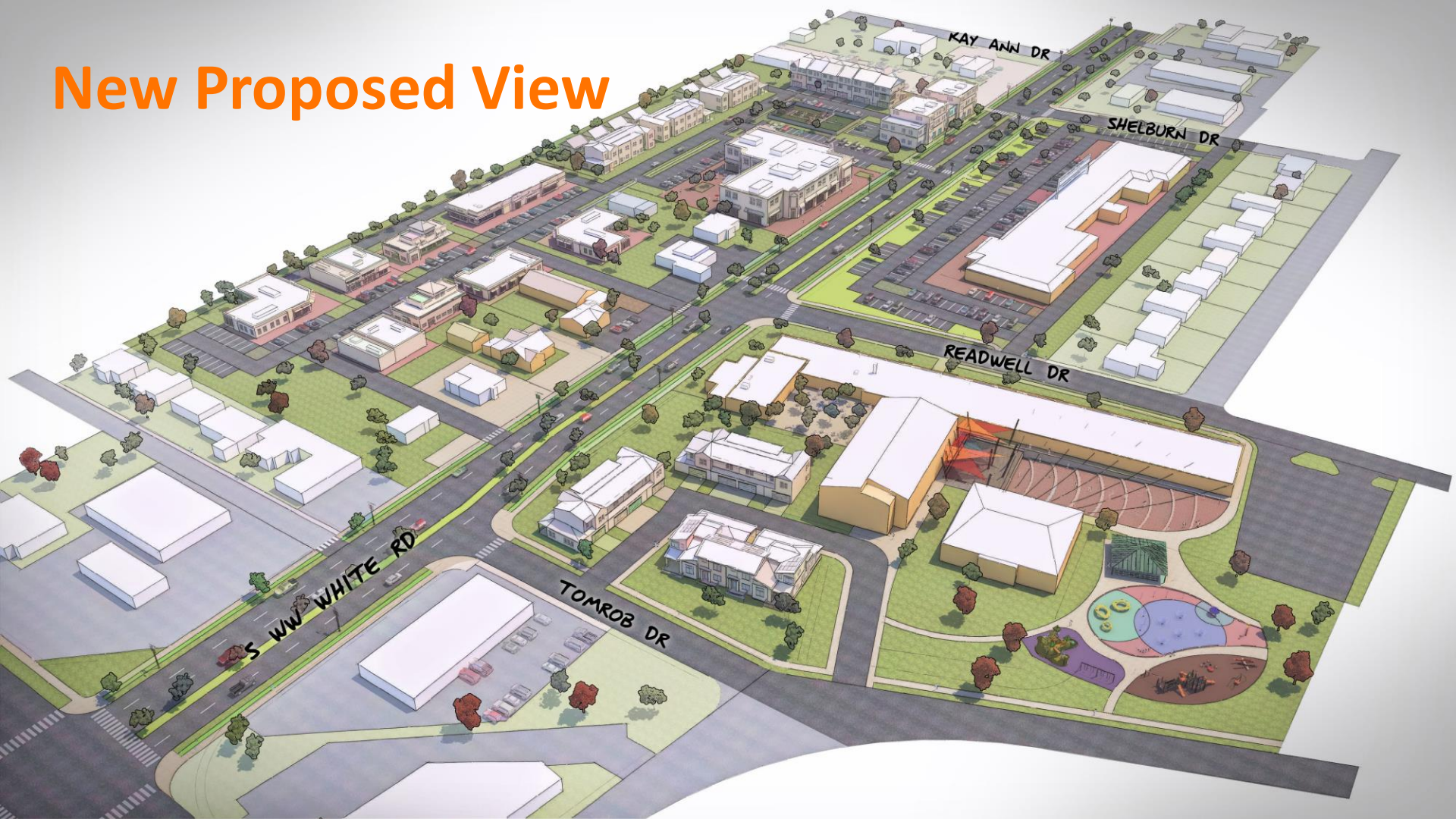


New Proposed View





New Proposed View

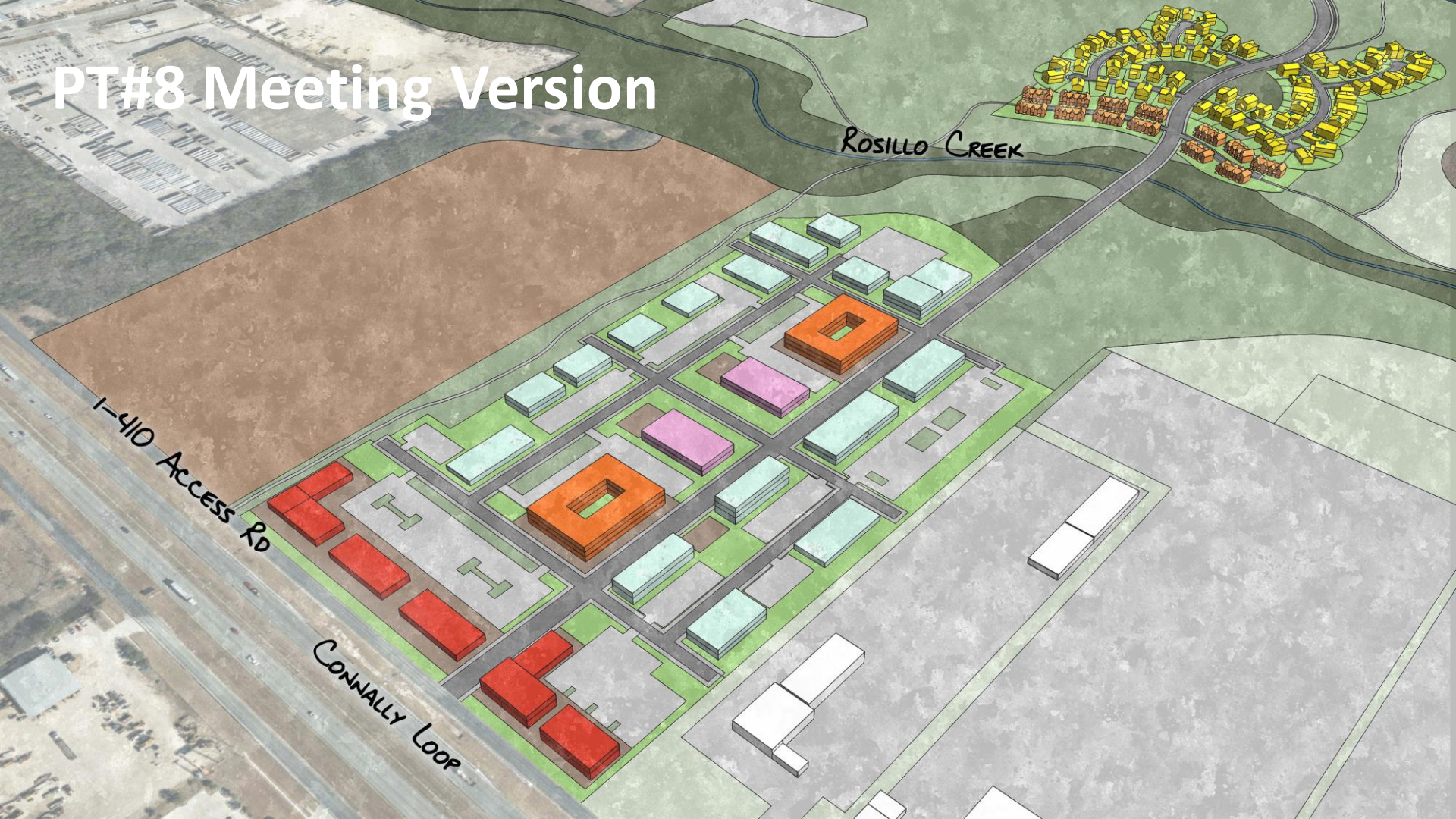


SA TOMORROW

Far East: Focus Area 2 – Loop 410
and Rosillo Creek



PT#8 Meeting Version



ROSILLO CREEK

I-410 ACCESS Rd

CONNALLY LOOP

Updated Version



ROSILLO CREEK

PROPOSED ACCESS ROAD

I-410 CONALLY LOOP

PT#8 Meeting Version



Updated Version





SA



TOMORROW

Amenities & Public Spaces
(Continued from PT#9)

Draft Amenities & Public Space Recommendations

- **APS Recommendation #1:** Provide trees along sidewalks to beautify streets, provide shade, reduce the urban heat island effect, and improve air quality.
- **APS Recommendation #2:** Create east-west trail connections that intersect with existing north-south connections.
- **APS Recommendation #3:** Increase the amount of lighting at parks and public spaces to allow them to be utilized during more times of the day.
- **APS Recommendation #4:** Establish and preserve community gardens at existing parks and open spaces.
- **APS Recommendation #5:** Add multi-functional green infrastructure for stormwater mitigation and traffic calming.

Updated Amenities & Public Space Strategies

APS Recommendation #1: Provide trees along sidewalks to beautify streets, provide shade, reduce the urban heat island effect, and improve air quality.

APS Strategy 1.1: Incorporate trees into streetscape enhancements and improvements.

APS Strategy 1.2: Encourage planting of trees along the back of sidewalks on private property.

APS Strategy 1.3: Create a neighborhood planting program to plant new trees and maintain existing ones.

APS Strategy 1.4: Educate private property owners about responsibilities and best practices for maintenance of trees, landscaping, and sidewalks.

Updated Amenities & Public Space Strategies

APS Recommendation #1: Provide trees along sidewalks to beautify streets, provide shade, reduce the urban heat island effect, and improve air quality.

APS Strategy 1.1: Incorporate trees into streetscape enhancements and improvements.

APS Strategy 1.2: Encourage planting of trees along the back of sidewalks on private property.

APS Strategy 1.3: Create a neighborhood planting program to plant new trees and maintain existing ones.

APS Strategy 1.4: Educate private property owners about responsibilities and best practices for maintenance of trees, landscaping, and sidewalks.

Updated Amenities & Public Space Strategies

APS Recommendation

#2: Create east-west trail connections that intersect with existing north-south connections.

APS Strategy 2.1: Create new and enhance existing trail connections to allow all Far East residents to safely access parks and community facilities.

APS Strategy 2.2: Prioritize trail connections that allow residents to efficiently and safely access key destinations like schools and grocery stores by foot or bike.

APS Strategy 2.3: Enhance connections to and access points along existing and future trails.

Updated Amenities & Public Space Strategies

APS Recommendation

#3: Increase the amount of lighting at parks and public spaces to allow them to be utilized during more times of the day.

APS Strategy 3.1: Conduct a lighting study to identify gaps and potential improvements.

APS Strategy 3.2: Work with developers to enhance lighting around public areas as part of new developments.

APS Strategy 3.3: Integrate improved lighting into park maintenance and improvement projects.

Updated Amenities & Public Space Strategies

APS Recommendation

#4: Establish and preserve community gardens at existing parks and open spaces.

APS Strategy 4.1: Create programs to educate residents on how to effectively maintain and start a community garden, and about the health benefits they provide.

APS Strategy 4.2: Connect residents to resources and supplies to create community gardens.

APS Strategy 4.3: Identify potential locations **and potential partners** to create community gardens to help ensure that all Far East residents have equitable access to healthy food.

Updated Amenities & Public Space Strategies

APS Recommendation

#4: Establish and preserve community gardens at existing parks and open spaces.

APS Strategy 4.1: Create programs to educate residents on how to effectively maintain and start a community garden, and about the health benefits they provide.

APS Strategy 4.2: Connect residents to resources and supplies to create community gardens.

APS Strategy 4.3: Identify potential locations and potential partners to create community gardens to help ensure that all Far East residents have equitable access to healthy food.

Updated Amenities & Public Space Strategies

APS Recommendation #5: Add multi-functional green infrastructure for stormwater mitigation and traffic calming.

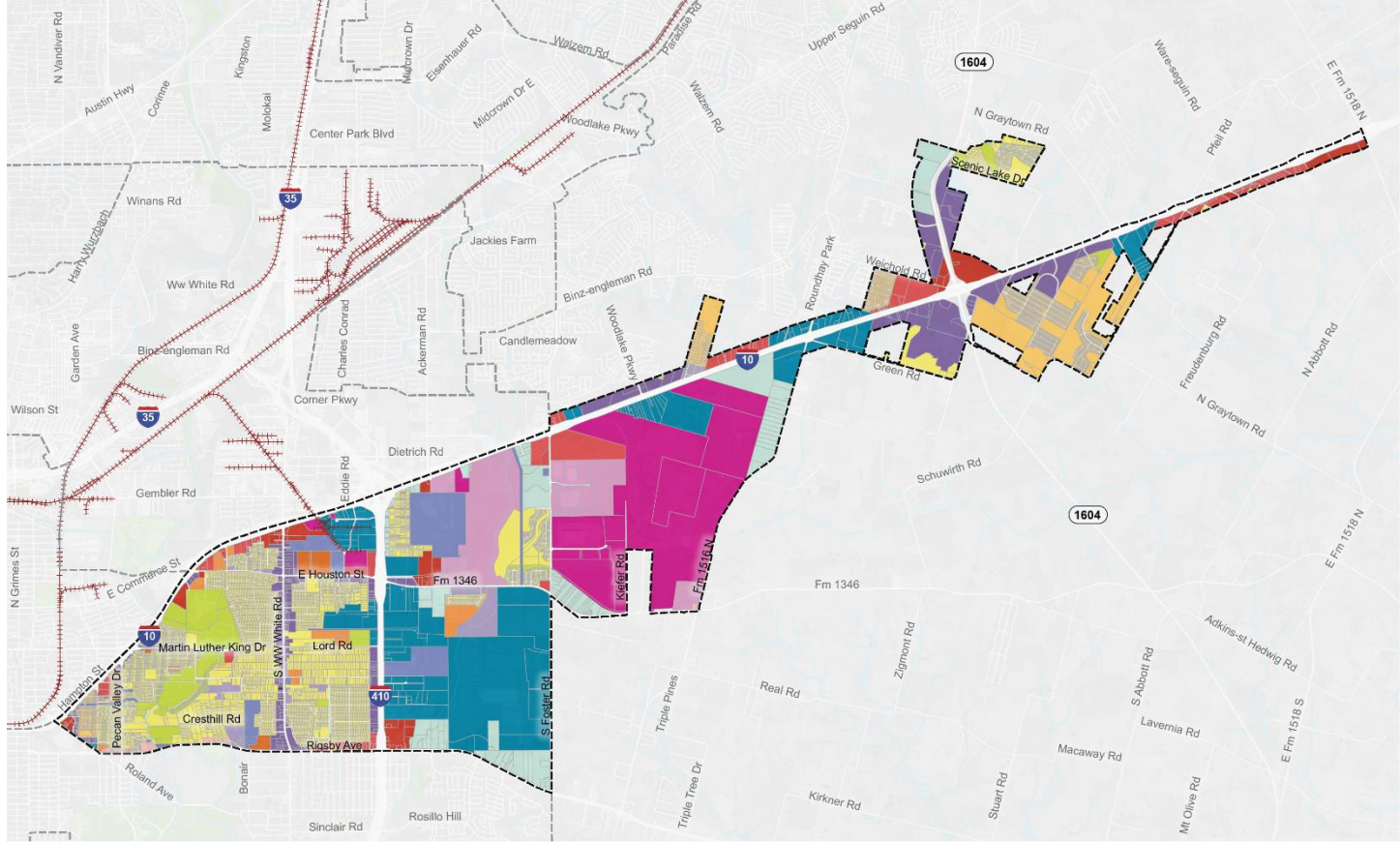
APS Strategy 5.1: Integrate green infrastructure improvements in street maintenance and improvement projects.

APS Strategy 5.2: Prioritize green infrastructure improvements in flood-prone areas.

APS Strategy 5.3: Incorporate green infrastructure in streetscape projects, especially near schools and parks to assist in traffic calming.

SA TOMORROW

Previous Land Use, Focus Areas, APS,
and Mobility Maps



FUTURE LAND USE

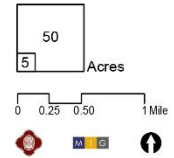
- Community Plan Area Boundary
- Adjacent Regional Center or Community Area
- Draft Focus Areas

- Land Uses**
- Low Density Residential
 - Urban Low Density Residential
 - Medium Density Residential
 - High Density Residential

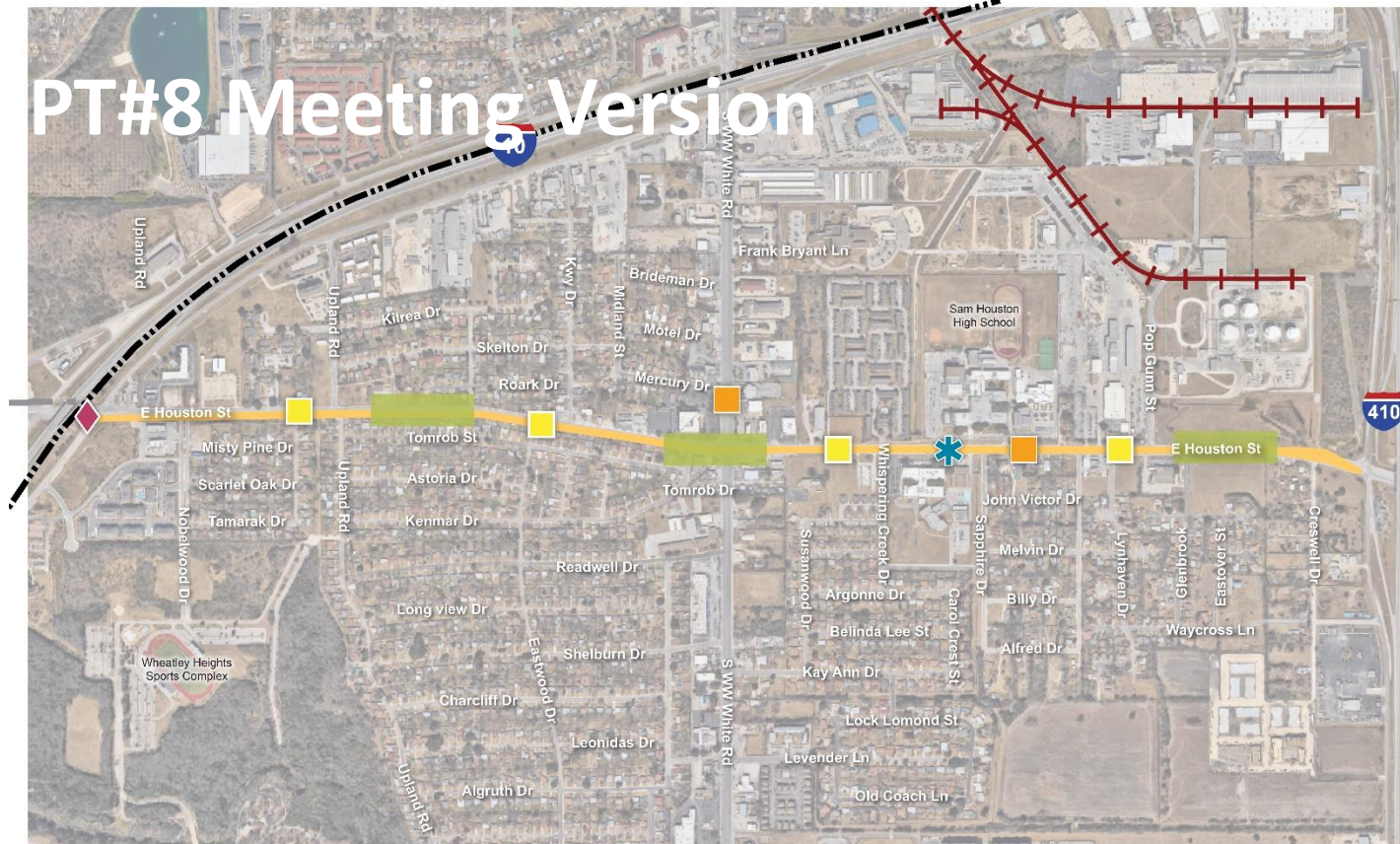
- Neighborhood Mixed-Use
- Urban Mixed-Use
- Regional Mixed-Use
- Employment / Flex Mixed-Use
- Light Industrial
- Heavy Industrial

- Neighborhood Commercial
- Community Commercial
- Regional Commercial
- City / State / Federal Government
- Parks / Open Space

A comprehensive plan shall not constitute zoning regulations or establish zoning district boundaries.



PT#8 Meeting Version



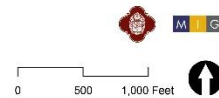
FOCUS AREA 1: EAST HOUSTON STREET CORRIDOR

LEGEND

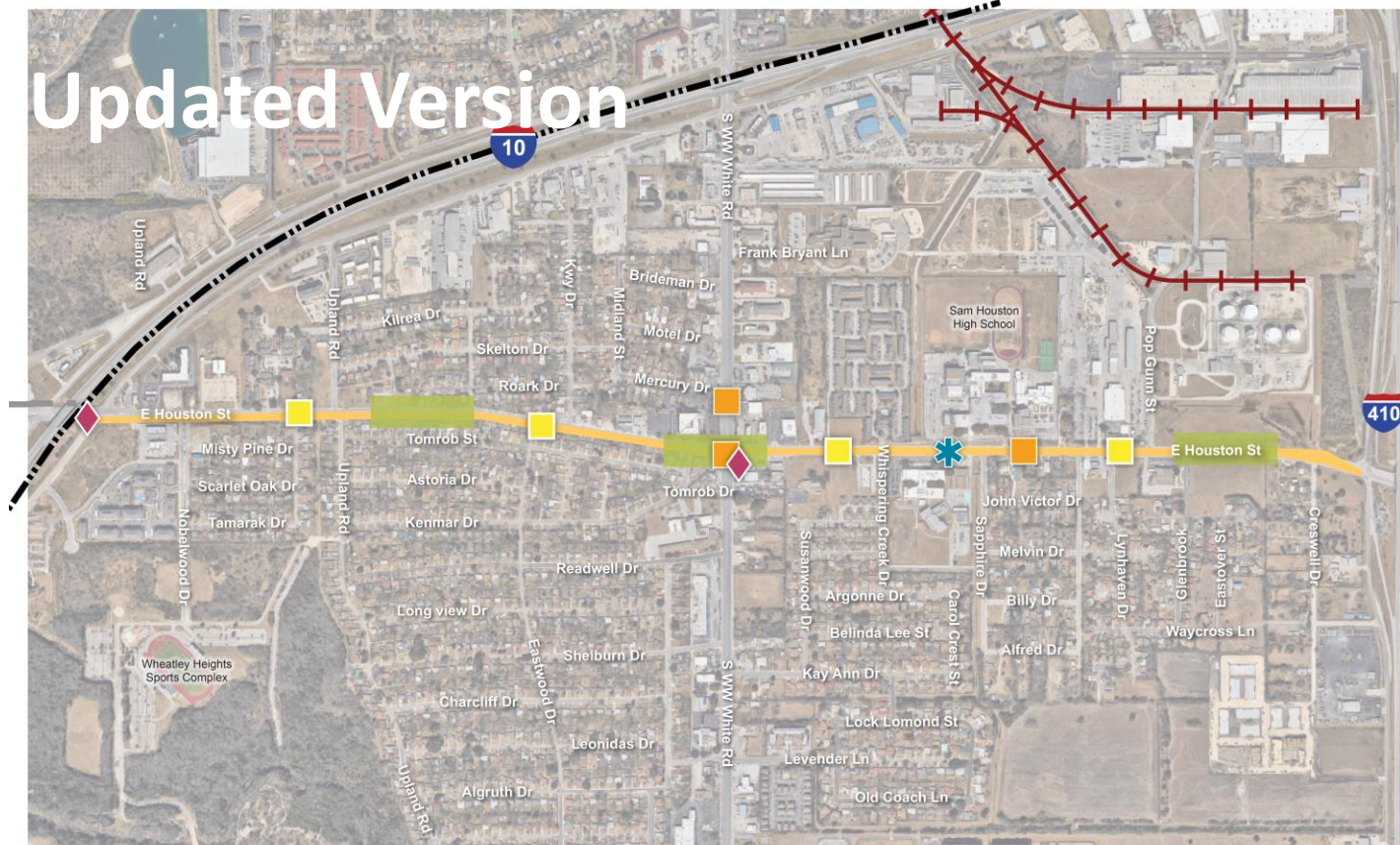
- Community Plan Area Boundary
- Adjacent Regional Center or Community Area
- Focus Area
- Railroad Line

FOCUS AREA RECOMMENDATIONS

- Proposed Park/Open Space
- Public Art
- Signage and Wayfinding
- Improved Lighting
- Pedestrian Crossing



Updated Version



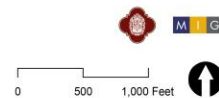
FOCUS AREA 1: EAST HOUSTON STREET CORRIDOR

LEGEND

-  Community Plan Area Boundary
-  Adjacent Regional Center or Community Area
-  Focus Area
-  Railroad Line

FOCUS AREA RECOMMENDATIONS

-  Proposed Park/Open Space
-  Public Art
-  Signage and Wayfinding
-  Improved Lighting
-  Pedestrian Crossing



PT#8 Meeting Version



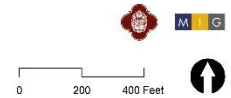
FOCUS AREA 2: OLD WW WHITE ELEMENTARY SCHOOL

LEGEND

- Community Plan Area Boundary
- Adjacent Regional Center or Community Area
- Focus Area
- Railroad Line

FOCUS AREA RECOMMENDATIONS

- Proposed Park/Open Space
- Character-Defining Features
- Increased Lighting
- Pedestrian Crossing
- Green Infrastructure



Updated Version



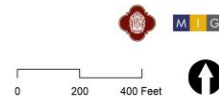
FOCUS AREA 2: OLD WW WHITE ELEMENTARY SCHOOL

LEGEND

- Community Plan Area Boundary
- Focus Area
- Railroad Line
- Public Art
- Improved Lighting
- Pedestrian Crossing
- Green Infrastructure

FOCUS AREA RECOMMENDATIONS

- Proposed Park/Open Space
- Character-Delining Features
- Public Art
- Improved Lighting
- Pedestrian Crossing
- Green Infrastructure





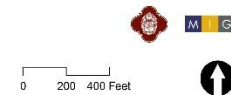
FOCUS AREA 3:
WW WHITE RD
 & Q1 D MUNICIPAL LANDFILL SITE

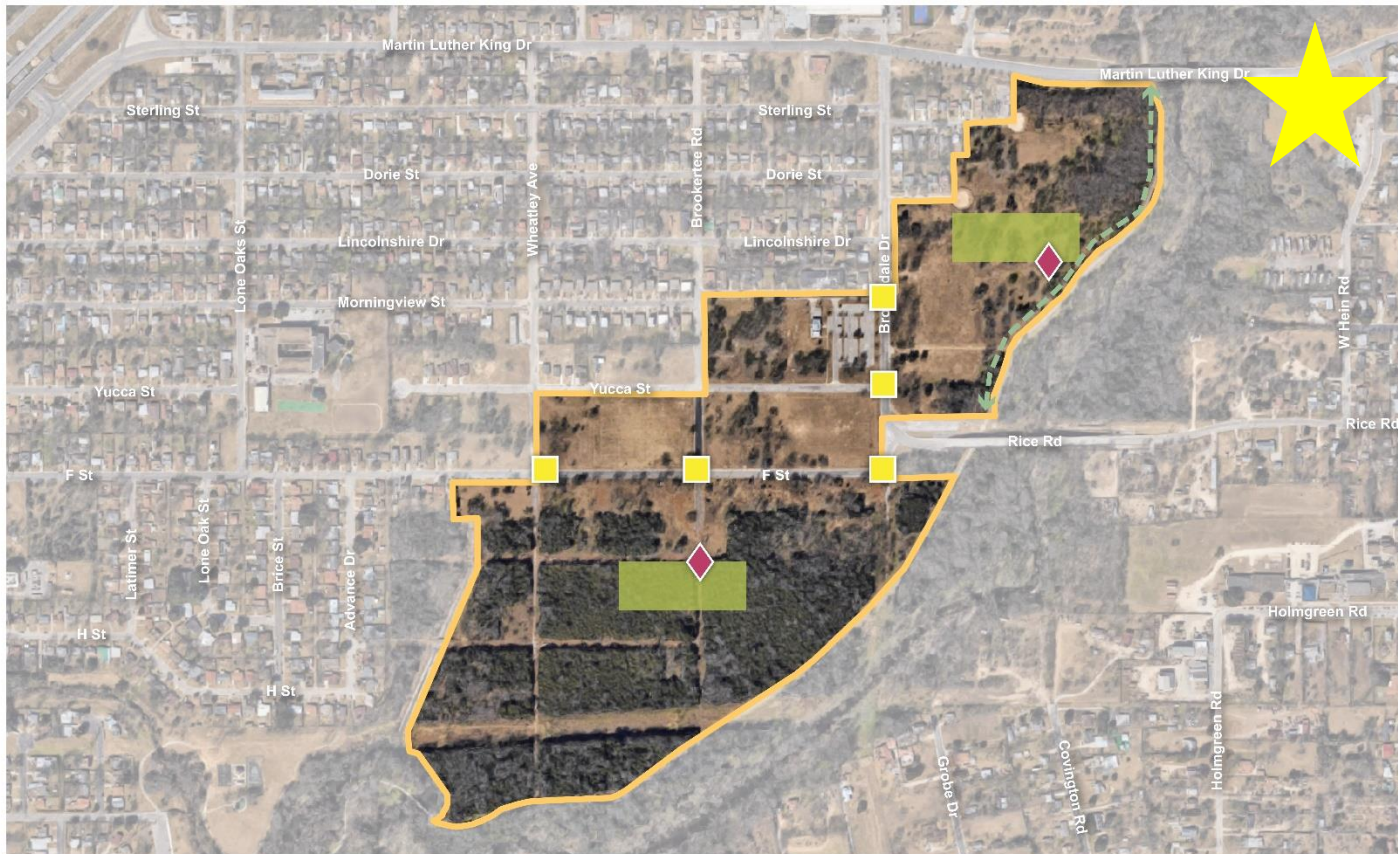
LEGEND

- Community Plan Area Boundary
- Focus Area
- Adjacent Regional Center or Community Area
- Railroad Line

FOCUS AREA RECOMMENDATIONS

- Proposed Park/Open Space
- Public Art
- Improved Lighting





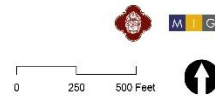
**FOCUS AREA 4:
WHEATLEY
HEIGHTS**

LEGEND

- Community Plan Area Boundary
- Adjacent Regional Center or Community Area
- Focus Area
- Railroad Line

FOCUS AREA RECOMMENDATIONS

- Trail
- Proposed Park/Open Space
- Public Art
- Improved Lighting





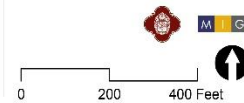
FOCUS AREA 5: EAST LOOP 410

LEGEND

- Community Plan Area Boundary
- Adjacent Regional Center or Community Area
- Focus Area
- Railroad Line

FOCUS AREA RECOMMENDATIONS

- Priority Connections
- Trail
- Character Defining Features
- Signage and Wayfinding
- Pedestrian Crossing





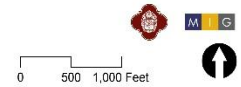
FOCUS AREA 6:
LOOP 1604
AND IH-10

LEGEND

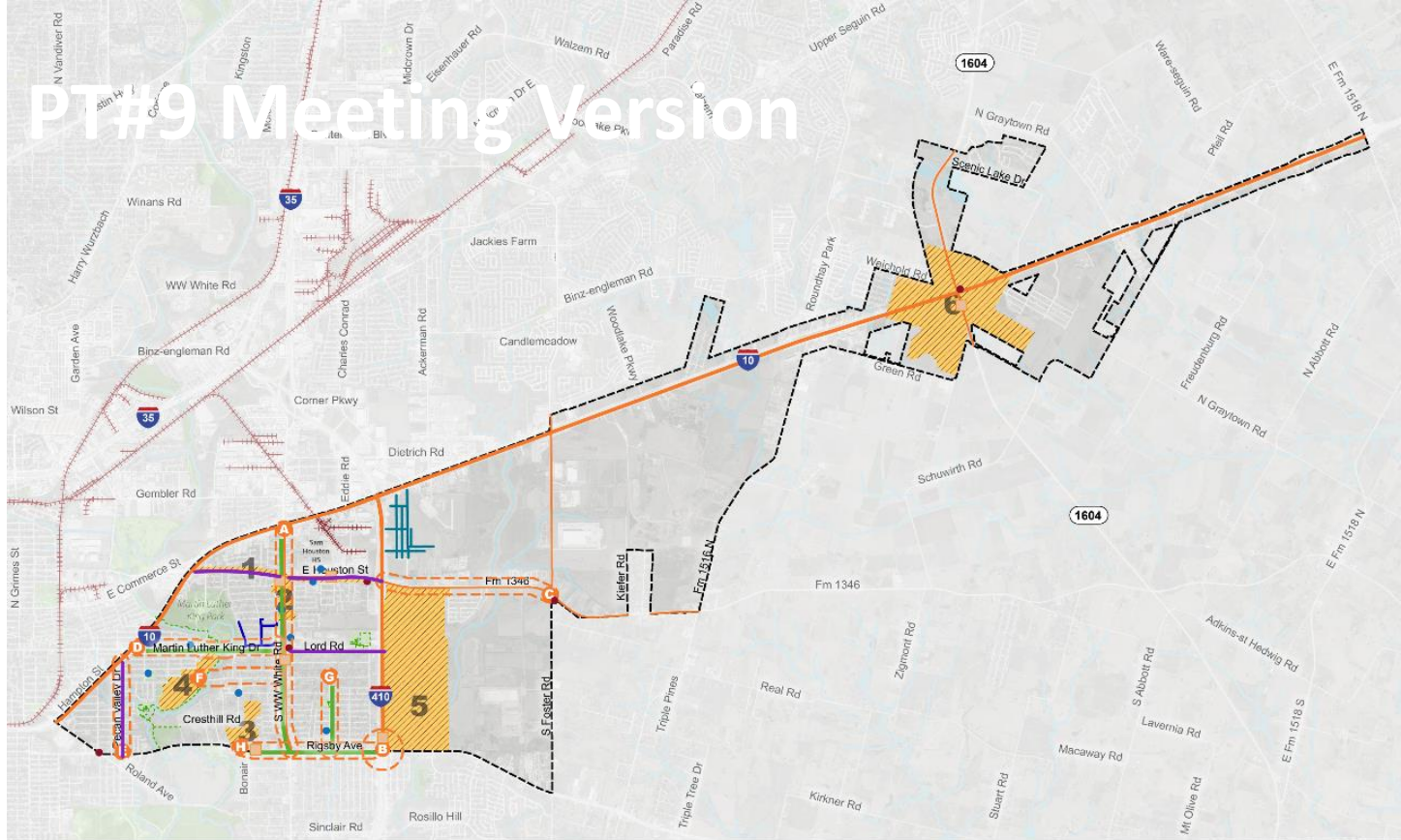
- Community Plan Area Boundary
- Adjacent Regional Center or Community Area
- Focus Area
- Railroad Line

FOCUS AREA RECOMMENDATIONS

- Priority Connections
- Proposed Plaza
- Proposed Park/Open Space
- Character Defining Features
- Public Art
- Signage and Wayfinding
- Pedestrian Crossing
- Green Infrastructure



PT#9 Meeting Version



MOBILITY

LEGEND

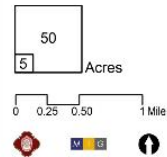
- Community Plan Area Boundary
- Adjacent Regional Center or Community Area
- Public or Private Park or Open Space
- River or Stream
- Railroad Line
- Focus Areas
- Public Schools
- Public Libraries

MOBILITY AREAS

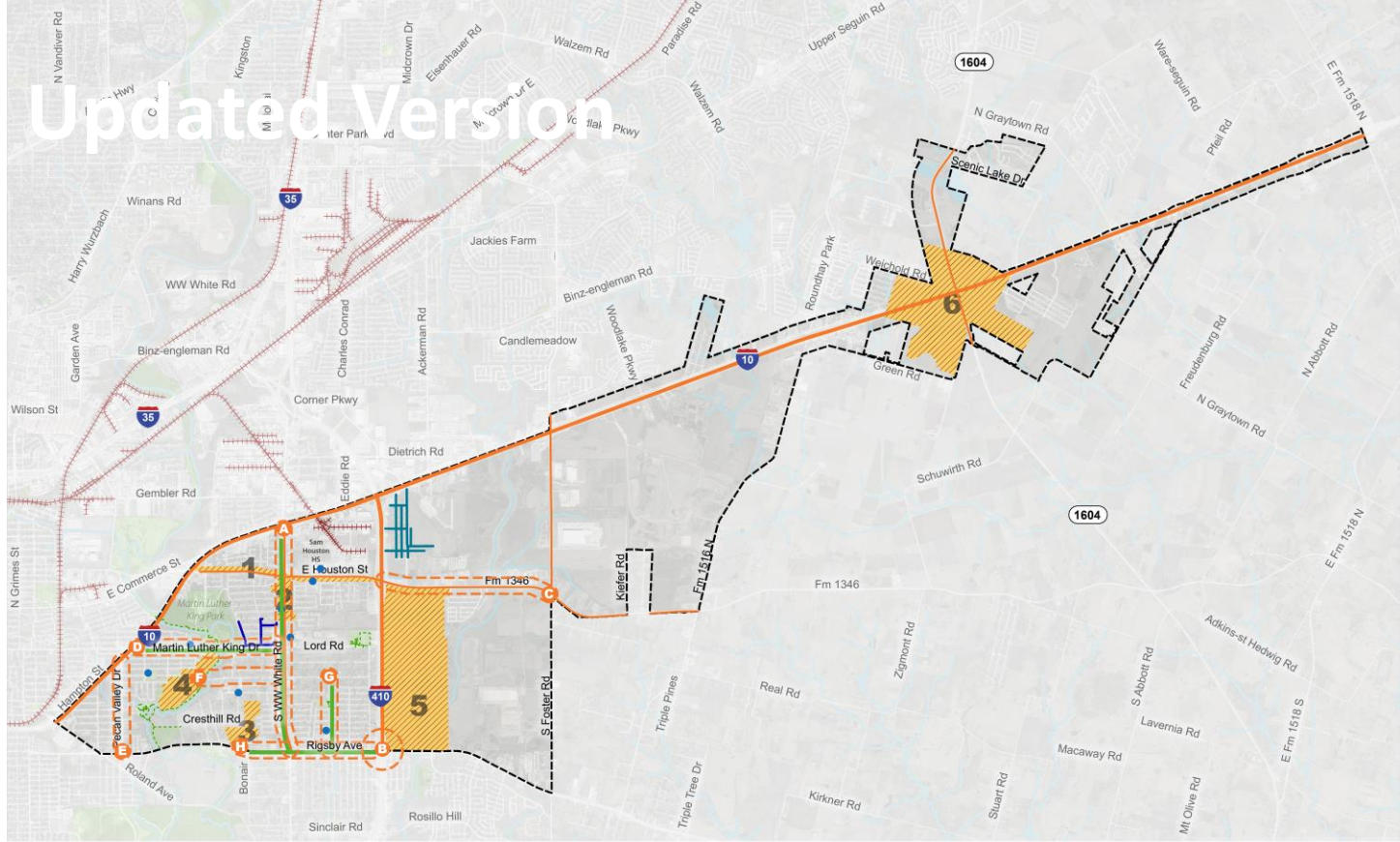
- A** W.W. White Rd from Rigsby to I-10 intersection of Rigsby Ave and Loop 410
- B** E of I-10, FM 1346 from Loop 410 to 1604 Rd
- C** MLK Dr from W. Winkler to E
- D** Rigsby Ave from Rigsby to Loop 410
- E** Rigsby Ave from Rigsby to Loop 410
- F** Rigsby Ave from Rigsby to Loop 410
- G** Rigsby Ave from Rigsby to Loop 410
- H** Rigsby Ave from Rigsby to Loop 410

PROPOSED ELEMENT

- Pedestrian Crossing
- Walk/Bike Trail Extension
- Mobility Hub
- Priority Pedestrian Corridor



Updated Version



AMENITIES AND PUBLIC SPACES

LEGEND

- Community Plan Area Boundary
- Adjacent Regional Center or Community Area
- Public or Private Park or Open Space

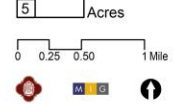
- River or Stream
- Railroad Line
- Focus Areas
- Public Schools
- Public Libraries

MOBILITY AREAS

- A** WW White Rd from Rigby to I-10
- B** Intersection of Rigby Ave and Loop 410
- C** E Houston St (E of 410, FM 1346) from Loop 410 to Foster Rd
- D** MLK Dr from WW White to I-10
- E** Rican Valley from Rigby to I-10
- F** Rice Rd from WW White to Brookdale
- G** E Houston St (E of 410, FM 1346) from Loop 410 to Foster Rd
- H** Rigby Ave from Holmgreen to Seminger

PROPOSED ELEMENT

- Pedestrian Crossing
- Walk/Bike Trail Extension



PT#9 Meeting Version



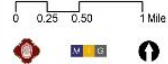
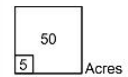
AMENITIES AND PUBLIC SPACES

LEGEND

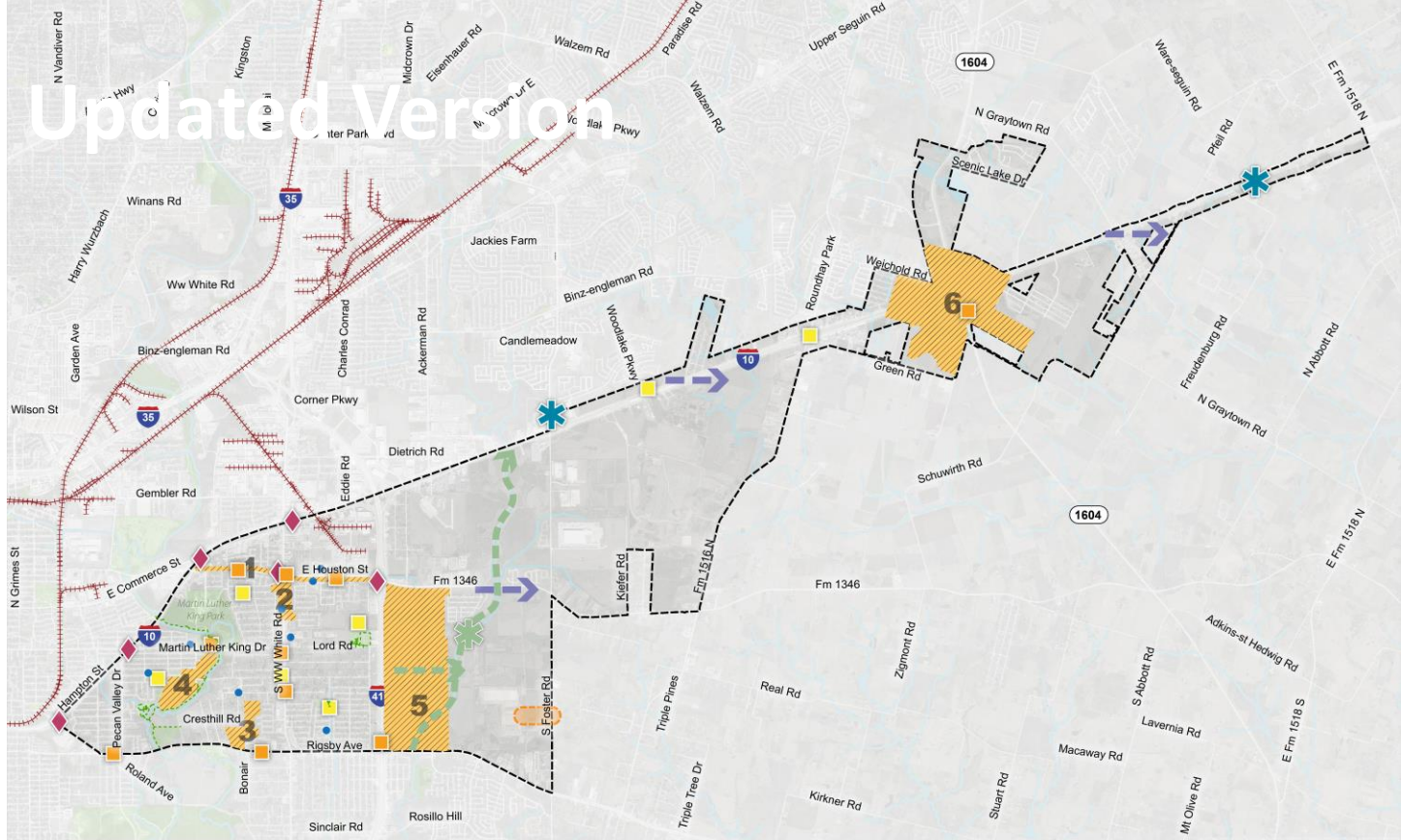
- Community Plan Area Boundary
- Adjacent Regional Center or Community Area
- Public or Private Park or Open Space
- River or Stream
- Railroad Line
- Focus Areas
- Public Schools
- Public Libraries

PROPOSED ELEMENT

- Priority Connections
- Trail
- Character-Defining Focuses
- Improved Lighting
- Pedestrian Crossing
- Public Art
- Signage and Wayfinding
- Trailhead



Updated Version



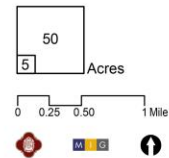
AMENITIES AND PUBLIC SPACES

LEGEND

- Community Plan Area Boundary
- Adjacent Regional Center or Community Area
- Public or Private Park or Open Space
- River or Stream
- Railroad Line
- Focus Areas
- Public Schools
- Public Libraries

PROPOSED ELEMENT

- Priority Connections
- Trail
- Character-Defining Features
- Public Art
- Signage and Wayfinding
- Trailhead
- Improved Lighting
- Pedestrian Crossing



SA



TOMORROW


Draft Plan Framework Map

Plan Framework Map Elements

 Priority Connections


 Trail

 Trailhead

 Green Infrastructure

 Character-Defining Features

 Public Art

 Signage and Wayfinding

 Adaptive Reuse

 Medical Facility

 Improved Lighting

 Pedestrian Crossing

 Improved Pedestrian Crossing

 Gateway

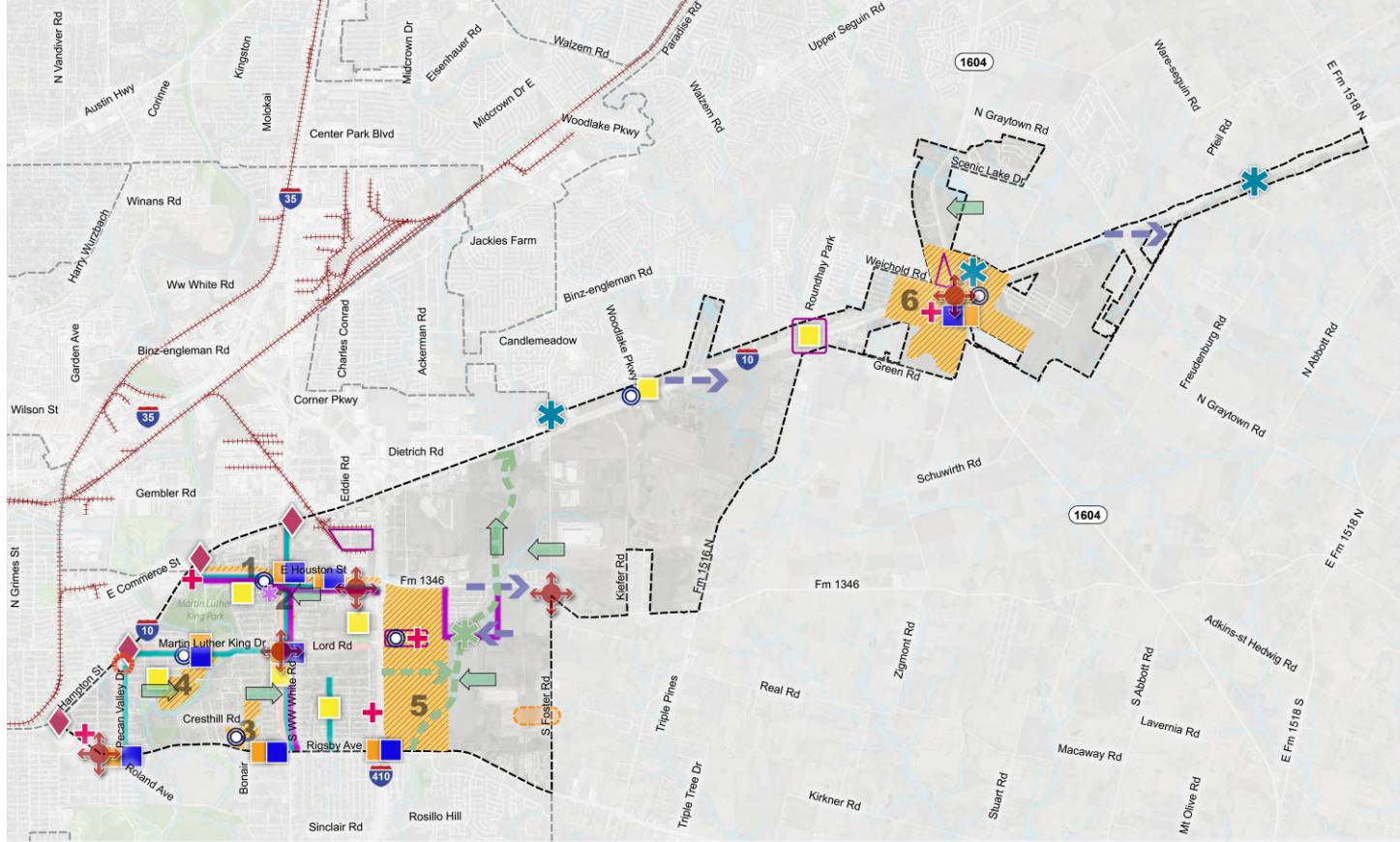
 Mobility Hub

 Activity Hub

 Pedestrian Priority Areas

 Streetscape Improvements

 Transition Zone



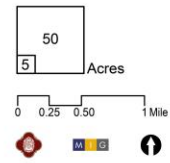
PLAN FRAMEWORK

LEGEND

- Community Plan Area Boundary
- Adjacent Regional Center or Community Area
- Public or Private Park or Open Space
- River or Stream
- Railroad Line
- Focus Areas
- Economic Development Opportunities
- Public Schools
- Public Libraries

PROPOSED ELEMENT

- Priority Connections
- Trail
- Trailhead
- Green Infrastructure
- Character-Defining Features
- Public Art
- Signage and Wayfinding
- Adaptive Reuse
- Medical Facility
- Improved Lighting
- Pedestrian Crossing
- Improved Pedestrian Crossing
- Gateway
- Activity Hub
- Pedestrian Priority Areas
- Streetscape Improvements
- Transition Zone





SA



TOMORROW

Mural Activity

SA TOMORROW

Implementation Strategy Discussion

Funding Opportunities

1. City Funding Sources

- Bond
- Community Development Block Grant
- City Council Project Fund
- Infrastructure Maintenance Program (IMP)

2. State Funding Sources

- Transportation Alternatives Set-Aside (TA) Program
- Congestion Mitigation and Air Quality Improvement (CMAQ) Program

3. Federal Funding Sources

- Flood Mitigation Assistance (FMA) Program
- Building Resilient Infrastructure and Communities (BRIC) Program
- Reconnecting Communities Pilot Program Planning Grants and Capital Construction Grants
- Safe Streets and Roads for All (SS4A)

Implementation of Plan Framework Map

Project	Key Stakeholders	Funding	Timing
Mobility Hub Near the Loop 1604 and IH-10 Intersection			
Medical Facility Near the Loop 1604 and IH-10 Intersection			
Mobility Hub Near the Houston and Foster Intersection			
Rosillo Creek Extension			
Streetscape Improvements Along Martin Luther King			
Public Art Improvements Along IH-10			
Activity Hub South of Martin Luther King Park			
Multiple Pedestrian Crossings Along Rigsby			
Green Infrastructure Near Creeks			
Wayfinding and Signage Near the IH-10 and Foster Intersection			
Streetscape Improvements Along Houston			



SA



TOMORROW

Mural Activity



SA TOMORROW

Next Steps

Next Steps

UPCOMING EVENTS:

- D2 Budget Townhall – Thursday, August 24th – Second Baptist Church at 6:30 PM
- Plan Sections Release – Fall/Winter 2023
- Public Draft – Winter 2023
- Mixer – Winter 2023
- Community Meeting #4 – Early 2024
- Planning Team Meeting #11 – Early 2024

QUESTIONS?

David Powell,
City of San Antonio
David.Powell@SanAntonio.gov
(210) 207-0244



Far East Community Area Planning Team

Meeting #10

Monday, August 21, 2023

Zoom

3:30 – 5:30 PM



Cambridge Systematics, Inc.
Bowtie
Economic & Planning Systems, Inc.
Auxiliary Marketing Services
Mosaic Planning and Development Services
SJPA