



Far East Community Area Plan

Planning Team Meeting #11

Monday, April 28, 2025

Virtual

1:00 PM



Cambridge Systematics, Inc.

Bowtie

Economic & Planning Systems, Inc.

Auxiliary Marketing Services

Mosaic Planning and Development Services

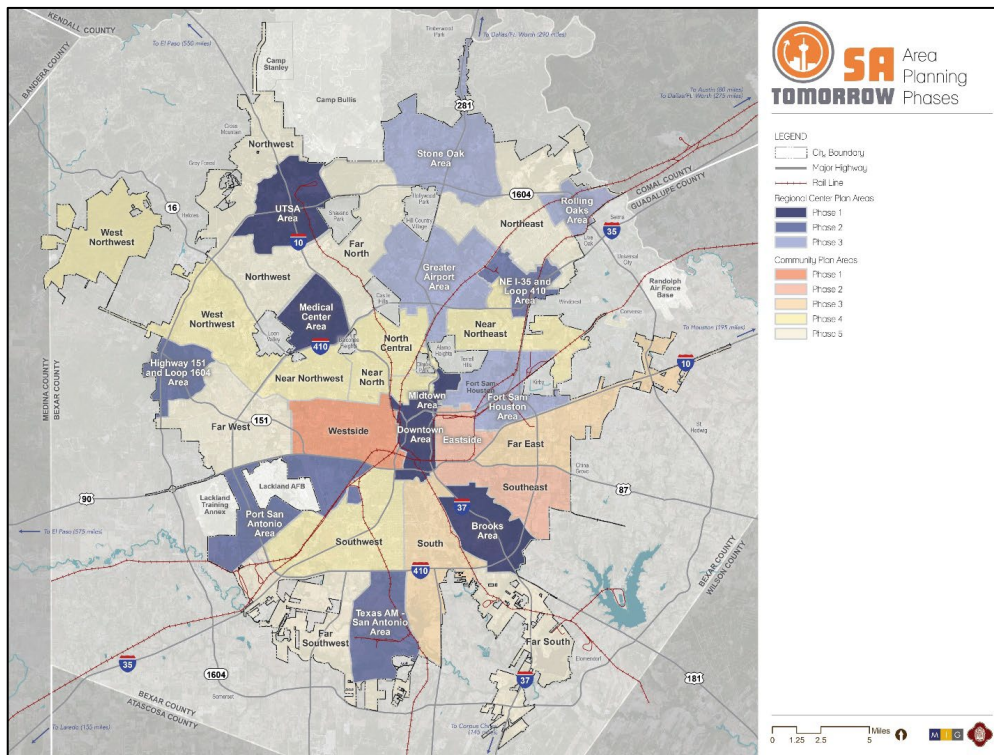
Worldwide Languages

Able City

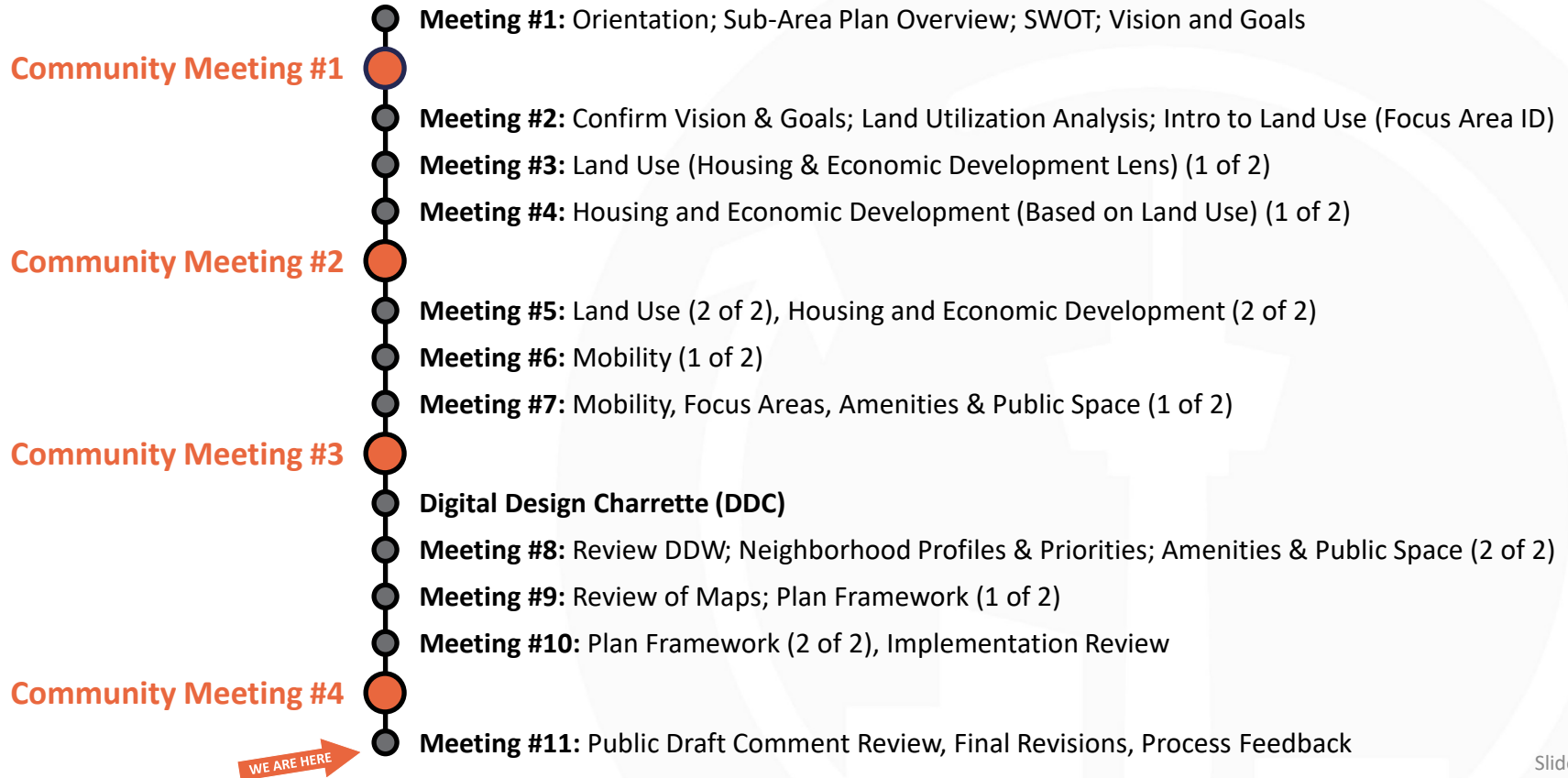
WSP

SA Tomorrow Comprehensive Plan

- **17 Community Areas in addition to the 13 Regional Centers**
- **Comprise many of our existing neighborhoods grouped by geography and common history, challenges, and opportunities**
- **Create complete, walkable neighborhoods and communities**



Timeline of Meetings

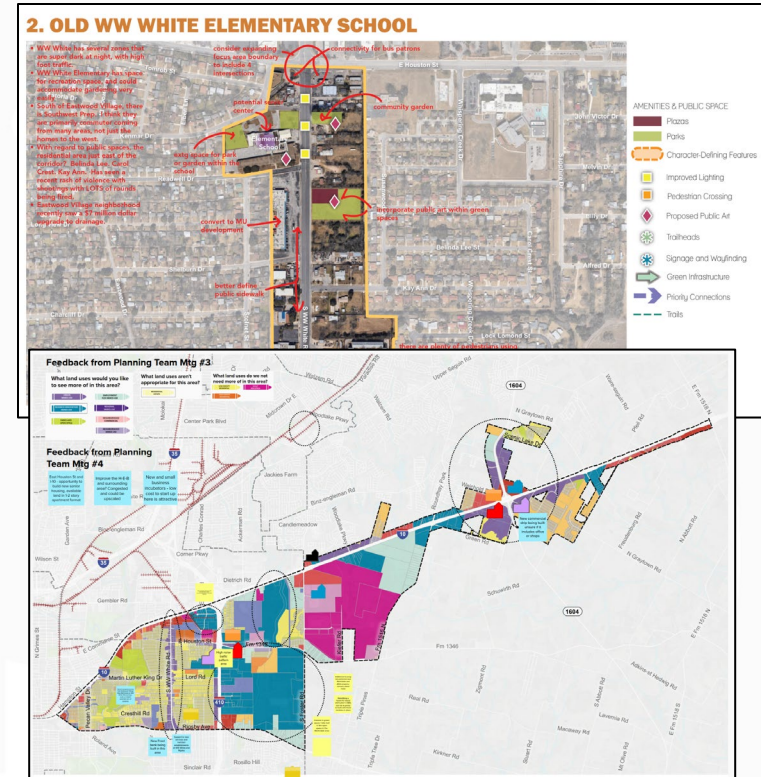


Meeting Objectives

- **Review of Outreach**
- **Overview of Public Discussion Draft**
- **Community Meeting 4 Comments / Responses**
- **Potential Revisions**
- **Next Steps / What to Expect**

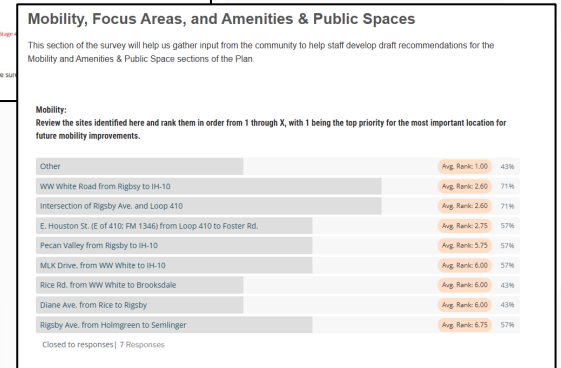
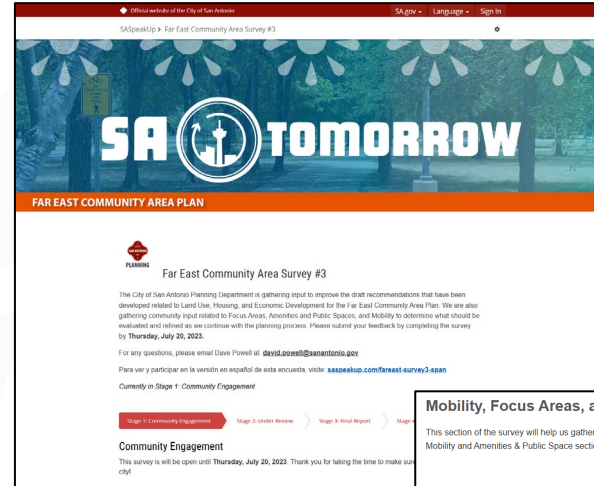
Review of Outreach: Planning Team Meetings

- 10 Planning Team Meetings
 - Topic Based Meetings From 2022 to 2023
 - Supplemental Information Sessions
 - San Antonio River Authority: Green Infrastructure (Planning Team Meeting 4)
 - Housing Department: Strategic Housing Implementation Plan S.H.I.P. (Optional)
 - Digital Design Charrette (Workshop)
 - Two-hour meeting to work on graphics for the Transformative Projects



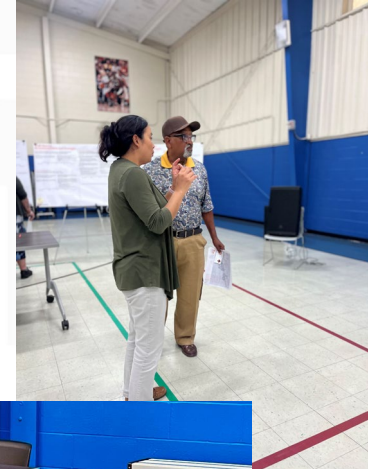
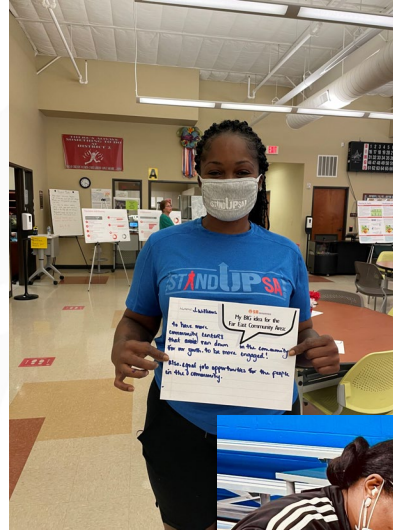
Review of Outreach: Online Surveys

- **SASpeakUp.com**
 - Website Views (13,927)
 - Three Surveys
 - Survey Views (9,873)
 - Participants (78)
 - Responses (891)
 - Comments (260)
 - Subscribers (576)



Review of Outreach: Community Meetings

- Four Community Meetings
- Approximately 150 participants





Public Discussion Draft

- Posted online in March 2025
- Email sent to subscription list (576)
- Notice sent to Plan Area with postcard advertising Community Meeting 4 (~15,000 postcards – including tenants and property owners)
- Comment period ends on May 18, 2025



Public Discussion Draft

- **Five Topical Sections**
 - Land Use - 5 Recommendations and Map
 - Mobility - 3 Recommendations and Map
 - Amenities and Public Spaces- 5 Recommendations and Map
 - Housing - 3 Recommendations
 - Economic Development - 5 Recommendations
- **Six Focus Areas**
 - East Houston Street Corridor
 - South WW White Road
 - Old Municipal Landfill Site
 - Wheatley Heights
 - East Loop 410
 - Loop 1604 and I-10
- **Three *Neighborhood Profiles and Priorities***
 - Hein Orchard, Eastwood Village, Dellcrest Area

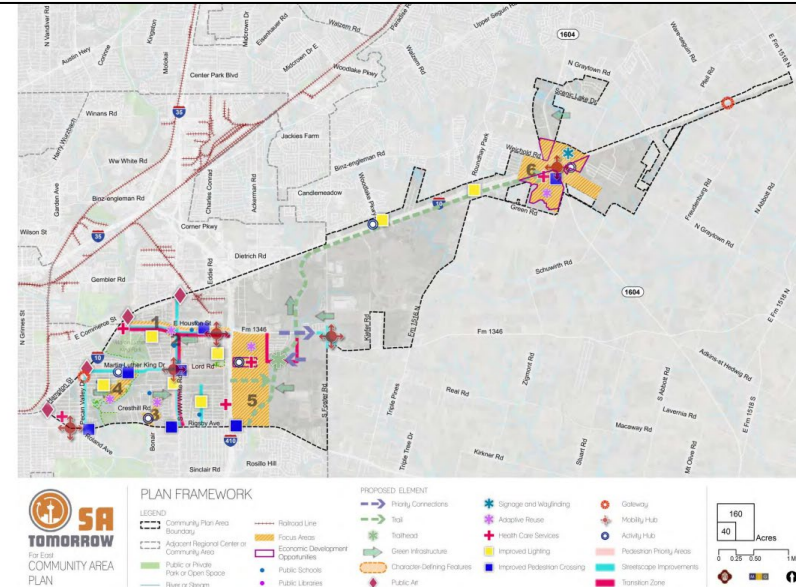
			
Table of Contents			
1	INTRODUCTION	3	
1.1	BACKGROUND	3	
1.2	INTENT OF THE PLAN	3	
1.3	PROCESS AND PUBLIC ENGAGEMENT	3	
1.4	PREVIOUS NEIGHBORHOOD, COMMUNITY, AND SECTOR PLANS	6	
1.5	COORDINATION WITH ADOPTED PLANS	6	
1.6	STATUTORY REQUIREMENTS	6	
2	LOCATION AND HISTORY	8	
2.1	LOCATION	8	
2.2	HISTORY	8	
2.3	EXISTING CONDITIONS AND EQUITY ATLAS	9	
3	VISION AND GOALS	9	
3.1	WHAT IS A VISION STATEMENT?	9	
3.2	ESTABLISHING THE VISION AND GOALS	9	
3.3	VISION AND GOALS	10	
4	IMPLEMENTATION PRIORITIES	12	
4.1	IMPLEMENTATION PRIORITY RECOMMENDATIONS AND STRATEGIES LIST	12	
4.2	IMPLEMENTATION PRIORITIES MAP	13	
4.3	IMPLEMENTATION PRIORITIES MATRIX	13	
4.4	FUNDING SOURCES	14	
5	LAND USE	17	
5.1	INTRODUCTION	17	
5.2	LAND USE SNAPSHOT	18	
5.3	LAND USE MAP	21	
5.4	LAND USE RECOMMENDATIONS AND STRATEGIES	26	
6	FOCUS AREAS	30	
6.1	UNDERSTANDING FOCUS AREAS	30	
6.2	FOCUS AREA #1: EAST HOUSTON STREET CORRIDOR	30	
6.3	FOCUS AREA #2: SOUTH WW WHITE ROAD	31	
6.4	FOCUS AREA #3: OLD MUNICIPAL LANDFILL SITE	33	
6.5	FOCUS AREA #4: WHEATLEY HEIGHTS	34	
6.6	FOCUS AREA #5: EAST LOOP 410	35	
6.7	FOCUS AREA #6: LOOP 1604 AND I-10	38	
7	MOBILITY	39	
7.1	MOBILITY SNAPSHOT	39	
7.2	MOBILITY FRAMEWORK MAP	43	
7.3	MOBILITY AREAS	46	
7.4	MOBILITY RECOMMENDATIONS AND STRATEGIES	48	
8	AMENITIES AND PUBLIC SPACES	52	
8.1	AMENITIES AND PUBLIC SPACES SNAPSHOT	52	
8.2	AMENITIES AND PUBLIC SPACES MAP	53	
8.3	AMENITIES AND PUBLIC SPACES RECOMMENDATIONS AND STRATEGIES	56	
9	HOUSING	62	
9.1	HOUSING SNAPSHOT	62	
9.2	HOUSING CHALLENGES	63	
9.3	HOUSING RECOMMENDATIONS AND STRATEGIES	64	
10	ECONOMIC DEVELOPMENT	68	
SA Tomorrow Sub-Area Planning: Far East Community Area Plan		1	

Public Discussion Draft

■ Implementation Priorities Map

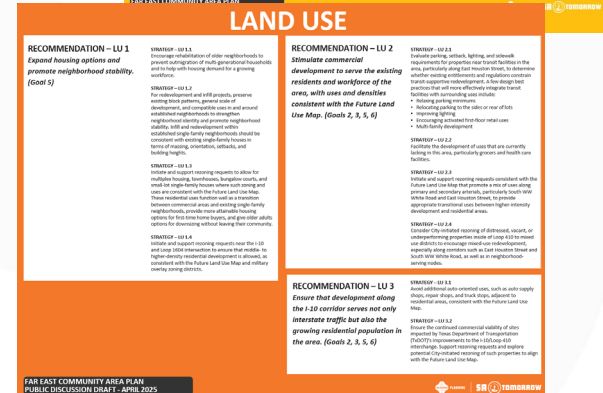
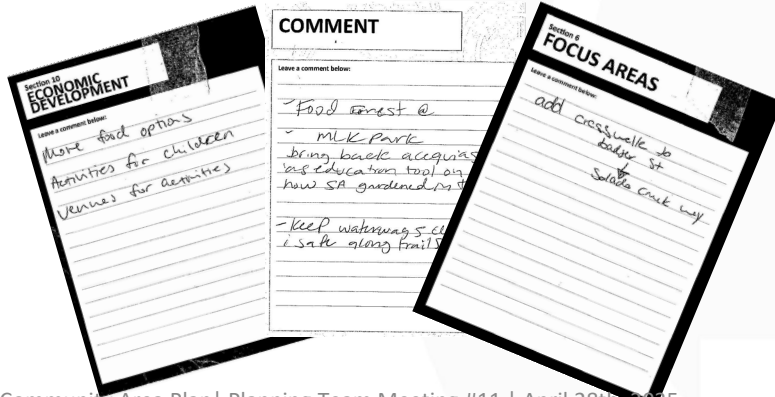
- Focus Areas #1-6
- Adding healthcare services throughout plan area.
- Establishing an east-west trail connection.
- Improving lighting in public spaces.
- Enhancing pedestrian crossings along corridors.

Figure 4: Implementation Priorities Map



Review of Community Meeting 4

- Wheatley Heights Sports Complex
- Open House with Q&A
- Presented Recommendations and Strategies, Focus Areas, and Maps
- Approximately 34 Participants
- All Comments and responses will be Posted Online



CM4 Comments: Land Use, Housing, Econ Dev

LAND USE

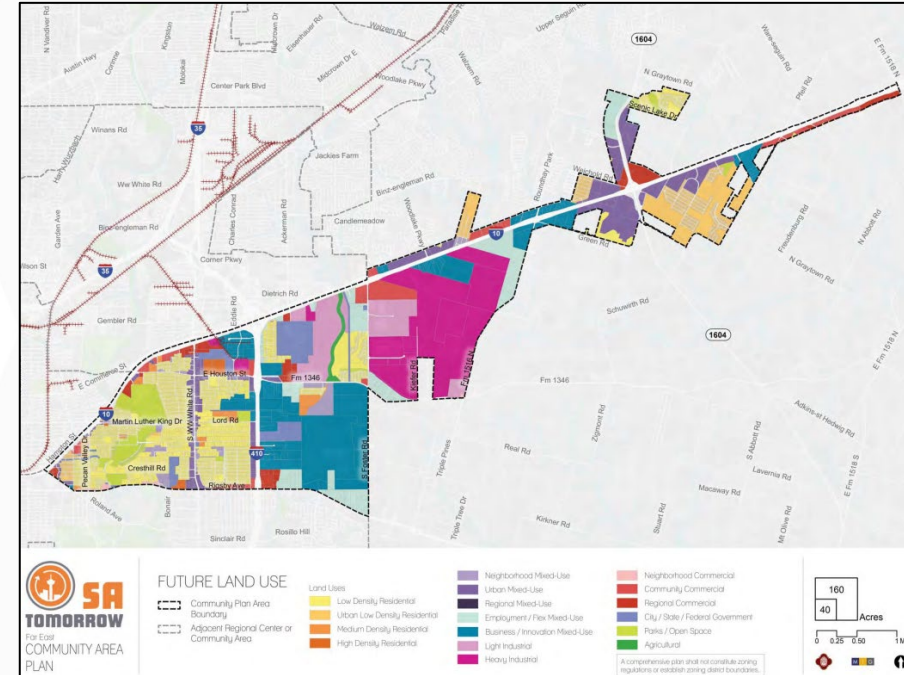
- Consider changing undeveloped Heavy Industrial uses to Light Industrial uses.

HOUSING

- Explore opportunities to help residential properties with maintenance and upkeep.

ECONOMIC DEVELOPMENT

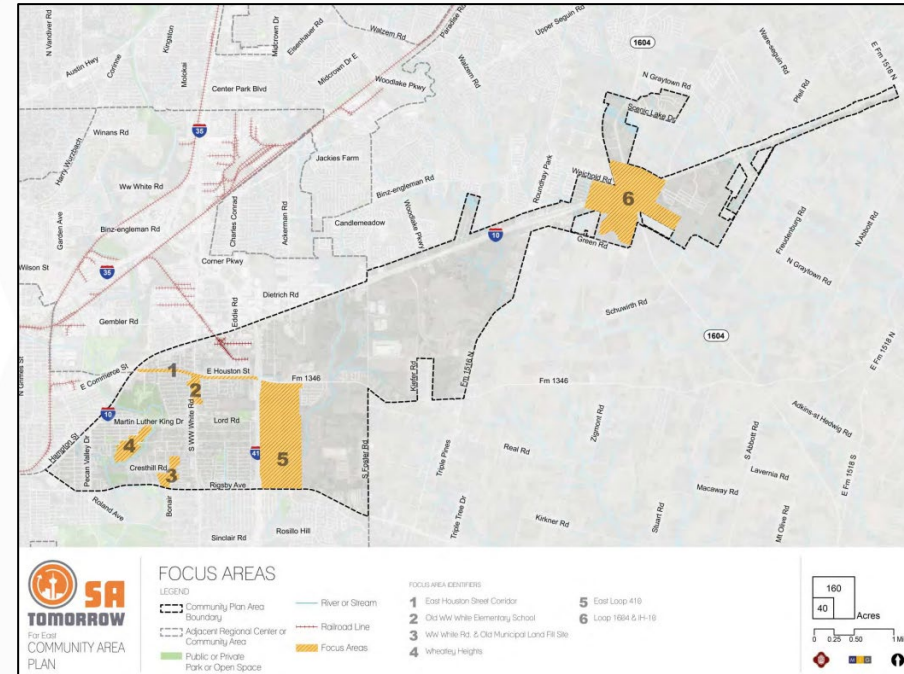
- Cultural, community activities, and businesses along MLK Dr. (MLK Cultural District).
- More food options and venues for activities.
- Activities for children.



CM4 Comments: Focus Areas

The comments received all centered on making sure the plan promotes:

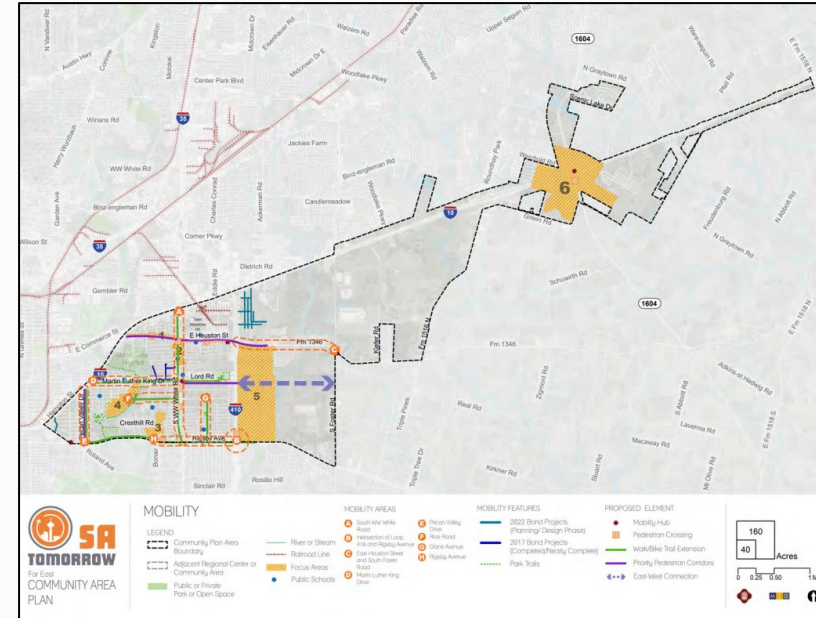
- Add lighting everywhere in Focus Area 4.
- Repurpose Comerica Bank building – desire for new culturally diverse restaurants (Focus Area 1).
- Other comments received include:
 - Adding sidewalks where there are gaps.
 - Adding crosswalks along school areas and trailways.
 - Adding food forests and community gardens.
 - Maintenance and beautification.
 - Adding desired commercial uses to support community needs.



CM4 Comments: Mobility

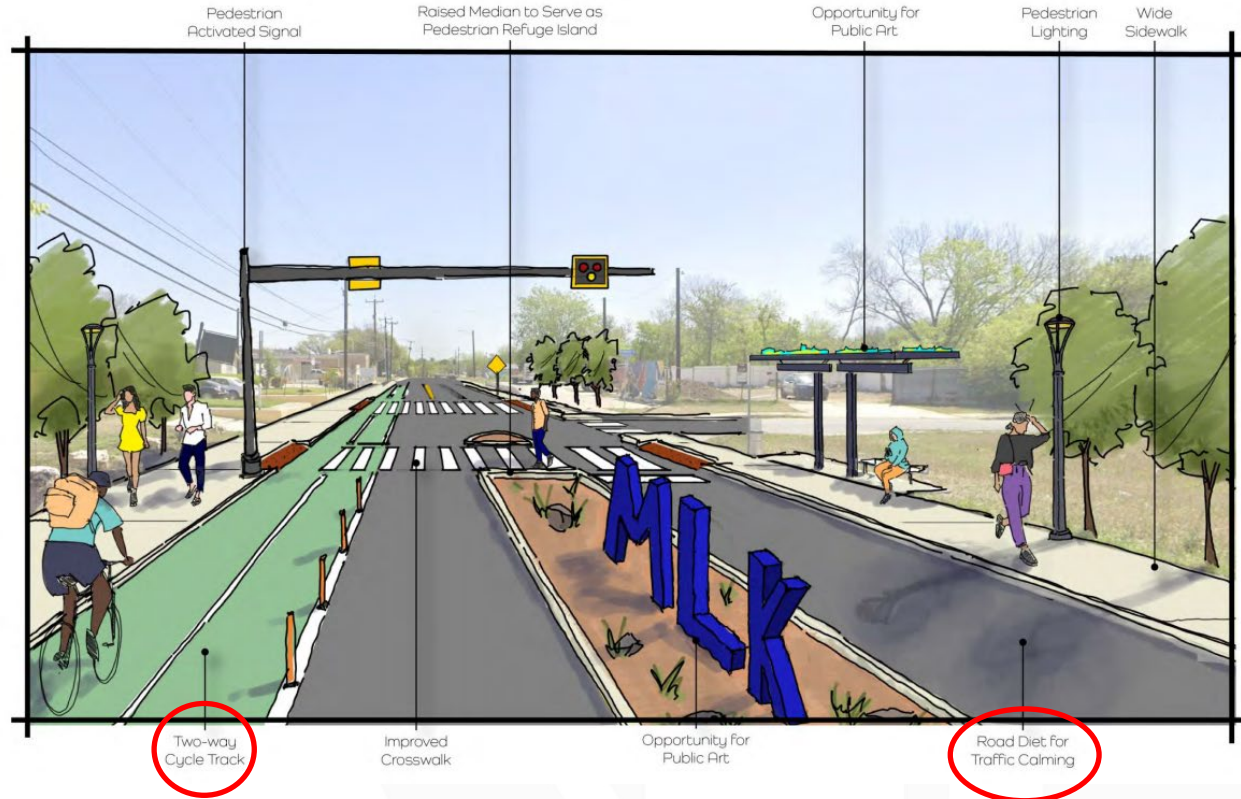
MOBILITY

- Add sidewalks where there are gaps.
- Add crosswalks at/near key community destinations (schools, trails, etc.).
- More VIA services east of Loop 410.
- 2nd Entrance into MLK Park.
- Enhance connections and safety in school service area boundaries.
- Martin Luther King Drive Comments:
 - Do not road diet.
 - More emphasis on establishing a “cultural corridor.”
 - Enhanced walkability (adding crosswalks, lighting, etc.).
 - Consider the school and event traffic for this area.



Mobility – Martin Luther King Drive

Figure 39: Mobility Site D – Martin Luther King Drive - Concept

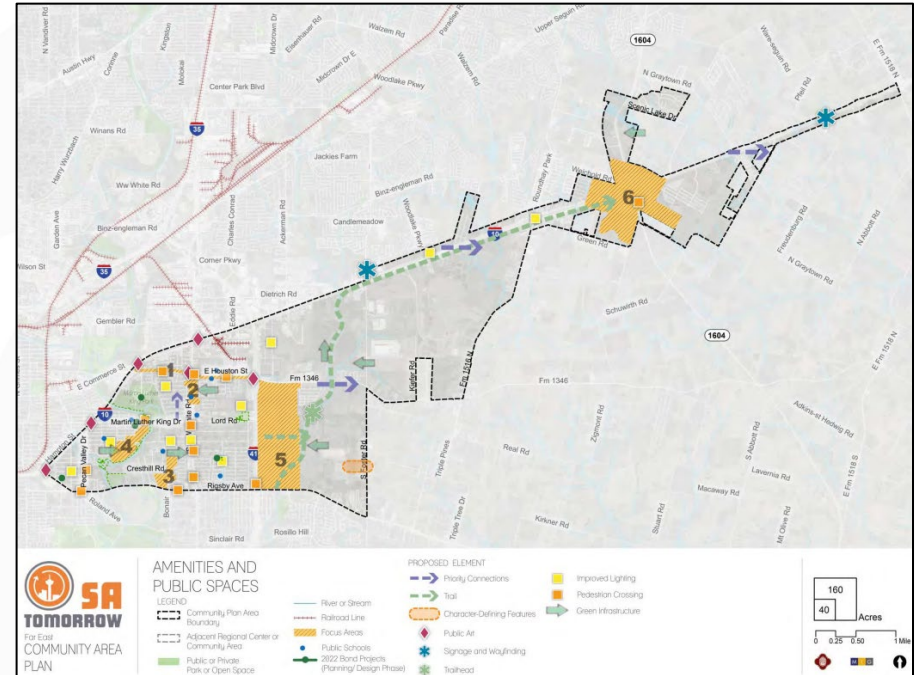


CM4 Comments: Amenities and Public Spaces

AMENITIES AND PUBLIC SPACES

Most comments revolved around:

- Lighting.
- Sidewalk Gaps.
- Pedestrian Crossings.
- Food forests and community gardens.
- Beautification.
- Community identity.
- Establishing a farm co-op.
- Enhanced youth activities.
- Green infrastructure along creek ways.
- Prioritizing connections to Salado Creek Greenway.



Likely Edits

- **Martin Luther King Drive.**
- **Building upon the draft plan:**
 - Enhancing opportunities for additional economic development.
 - Promoting food forests and community gardens in certain areas.
- **Identifying additional needs for pedestrian crossings and connections.**
- **Emphasizing the need to minimize sidewalk gaps.**
- **Rewording the history of Martindale Heliport.**

Likely Edits

- **Explore opportunities to add second entrance to MLK Park.**
- **Enhance area beautification opportunities – particularly along major roadways and commercial areas.**
- **Emphasizing community input to enhance food options in focus areas.**
- **Adding strategies to promote safe connections surrounding school areas.**
- **Add text to emphasize community interest to repurpose Comerica Bank Office Building.**

Additional Comments

- Do you have any additional comments that you would like to add towards the draft plan?



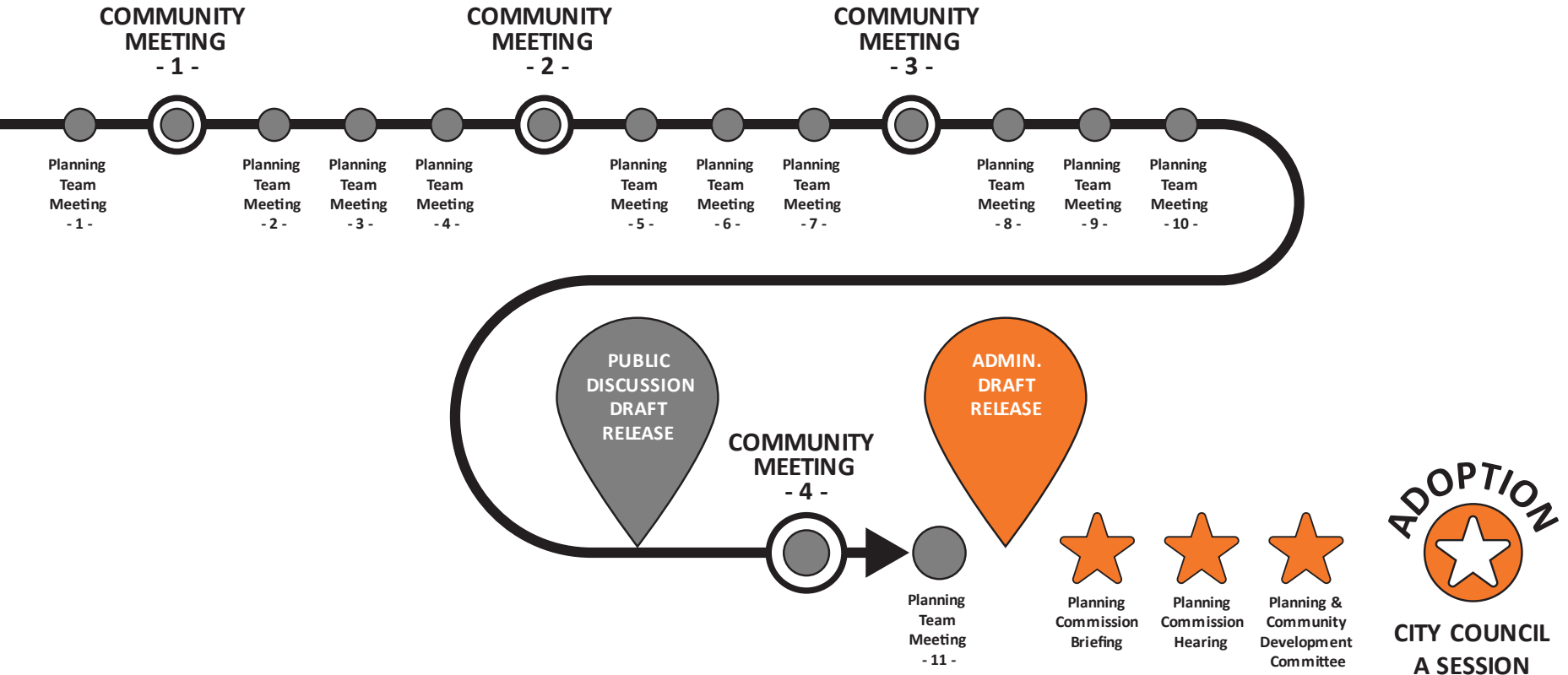
SA TOMORROW SUB-AREA PLANNING:
FAR EAST COMMUNITY AREA PLAN

PUBLIC DISCUSSION DRAFT: MARCH 2025

THIS IS A PROPOSED DRAFT SUBJECT TO COMMUNITY INPUT, LEGAL AND ADMINISTRATIVE REVIEW, AND WILL BE REPLACED BY THE FINAL PLAN ADOPTED BY THE CITY COUNCIL.



Next Steps



Next Steps

■ Upcoming Meetings:

- Closing of Public Comment Period: Sunday, May 18, 2025
- Release of Administrative Draft, TBD
- Planning Commission Hearing, TBD
- Planning Commission Briefing, TBD
- Planning and Community Development Committee, TBD
- City Council Adoption, Goal of Adopting the Plan by End of September 2025

■ Questions?

- David Powell, City of San Antonio
- David.Powell@sanantonio.gov
- (210) 207-0244

The Planning Process

- **Any comments about or suggested improvements to the Planning Process?**





Far East Community Area Plan

Planning Team Meeting #11

Monday, April 28, 2025

Virtual

1:00 PM



Cambridge Systematics, Inc.

Bowtie

Economic & Planning Systems, Inc.

Auxiliary Marketing Services

Mosaic Planning and Development Services

Worldwide Languages

Able City

WSP