



Greater Airport Area Planning Team

Meeting #1

Orientation / SWOT / Vision & Goals

Thursday, April 21st 2022

Virtual

5:30 PM – 7:30 PM



Cambridge Systematics, Inc.
Bowtie

Economic & Planning Systems, Inc.
Auxiliary Marketing Services

Mosaic Planning and Development Services
Worldwide Languages

Able City
WSP

SA



TOMORROW

Introductions

Greater Airport Area Project Team

- City of San Antonio, Planning Department
 - Jacob Howard, Project Manager
- MIG
 - Jay Renkens, Principal
 - Andy Rutz, Project Director
 - Krystin Ramirez, Project Manager



Area Planning Consultant Team

Project Lead: Moore Iacofano Goltsman, Inc.

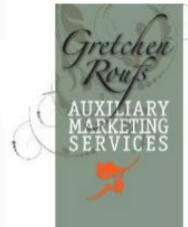


Sub-consultants:

- Economic & Planning Systems, Inc.
- MOSAIC Planning & Development Services
- Cambridge Systematics, Inc.
- Auxiliary Marketing Services
- BowTie
- WSP
- Able City



ECONOMIC & PLANNING SYSTEMS



MOSAIC

CAMBRIDGE
SYSTEMATICS

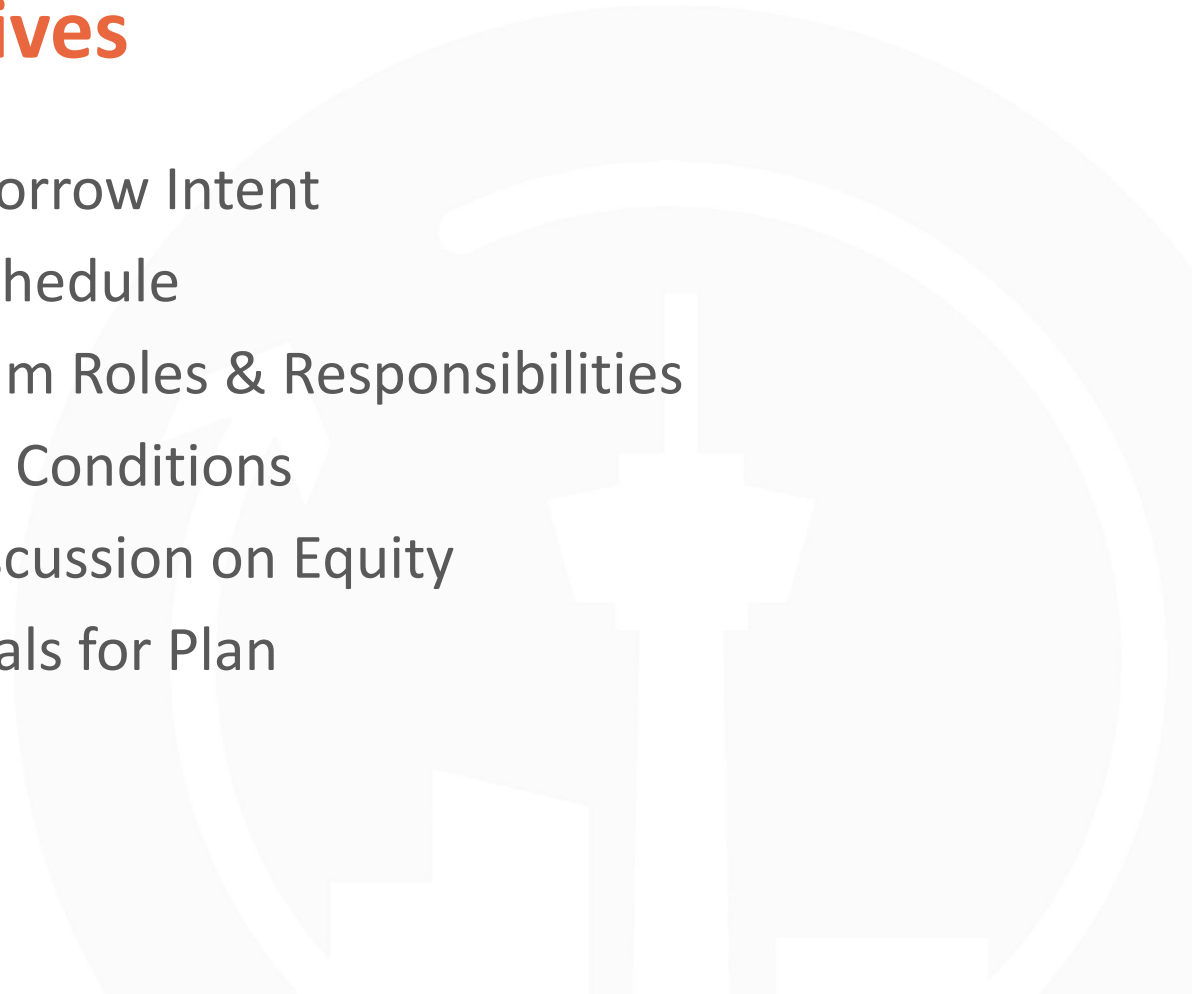


 **BowTie**

able.city
ARCHITECTURE. URBANISM. CITY MAKING



Meeting Objectives

- Overview of SA Tomorrow Intent
 - Review Process & Schedule
 - Discuss Planning Team Roles & Responsibilities
 - Overview of Existing Conditions
 - Introduction and Discussion on Equity
 - Identify Vision & Goals for Plan
- 



SA



TOMORROW

SA Tomorrow Background

The Challenge: Expected Growth



POPULATION



+ 1.1 million

1.7 million

2010

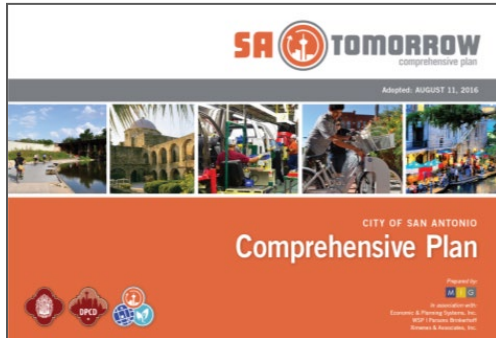
2.8 million

2040



Bexar County

An additional 1.1 million people are forecasted to live in Bexar County between 2010 and 2040.
This means **1/2 million new housing units and 1/2 million new jobs.**



Vision & Guiding Principles for 2040

SA Tomorrow is the story of a great American city.

San Antonio is a dynamic city with neighborhoods that are complete with unique places that define their character and celebrate our history. Our corridors unite our residents and our businesses, using cutting-edge multi-modal options that connect our neighborhoods to vibrant regional destinations...

1. Maintain the character and integrity of existing San Antonio neighborhoods, parks, open space and trails by focusing growth in mixed-use regional centers and along attractive multimodal corridors with high performing transit service.

2. Ensure that all residents living in existing and new neighborhoods have safe and convenient access to jobs, housing, and a variety of amenities and basic services including great parks, strong schools, convenient shopping and nearby regional centers.



3. Connect safe and stable mixed-income neighborhoods with a system of walkable and bikeable streets, trails and pathways that celebrate and link natural greenways and drainage ways.

4. Ensure an inclusive San Antonio by providing affordable housing and transportation choices throughout the city.

5. Encourage a variety of amenity-rich places throughout the city with a balance of live, work and play opportunities.



6. Conserve, protect and manage San Antonio's natural, cultural and historic resources and open space.

7. Encourage and integrate innovative and sustainable ideas and development.

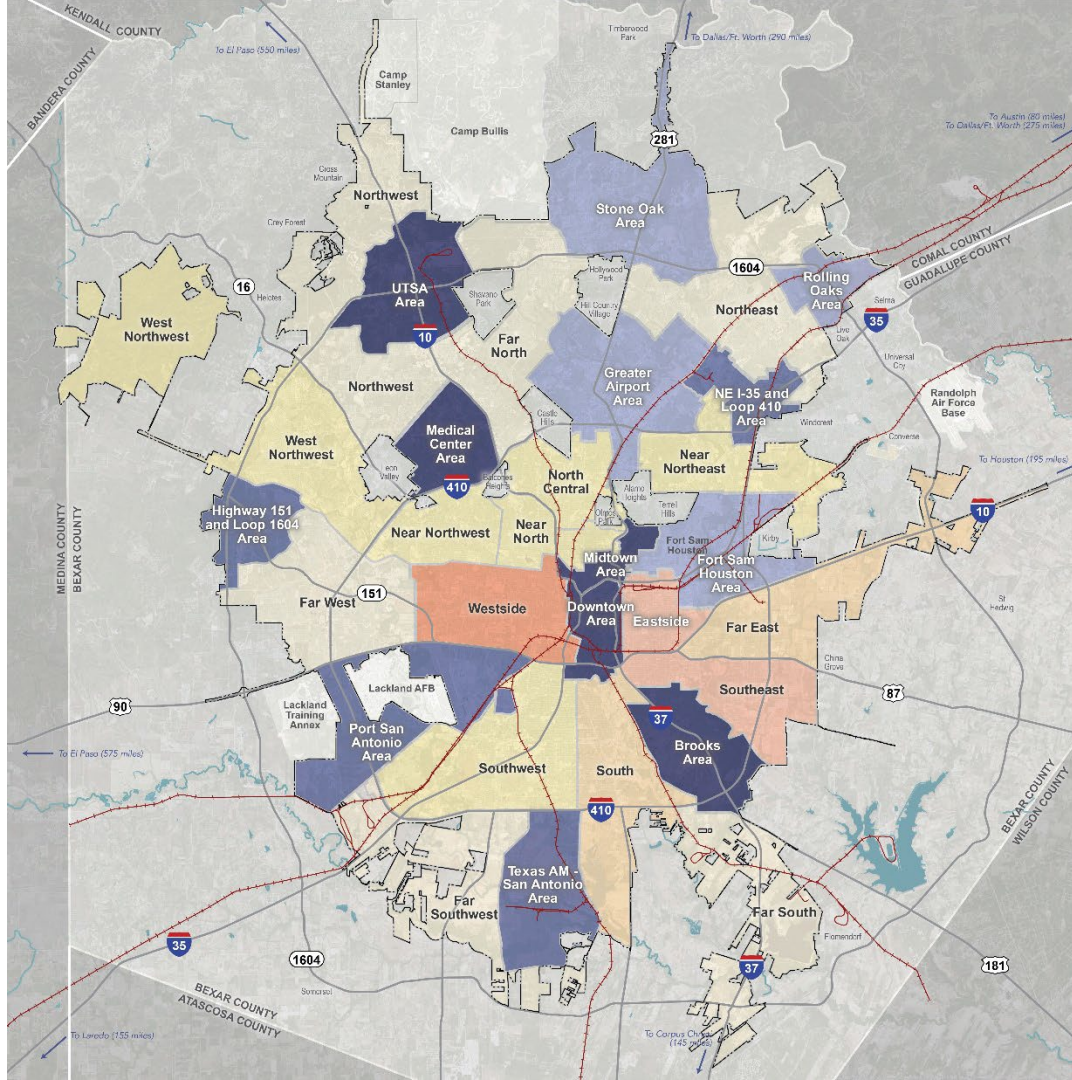
8. Provide an ongoing planning framework for more detailed and timely planning and design of regional centers, corridors and neighborhoods with continued opportunities for participation and partnerships, prioritization, and performance measurement.

9. Provide the residents of San Antonio, including youth, seniors, and disabled populations, with enhanced levels of authentic engagement.

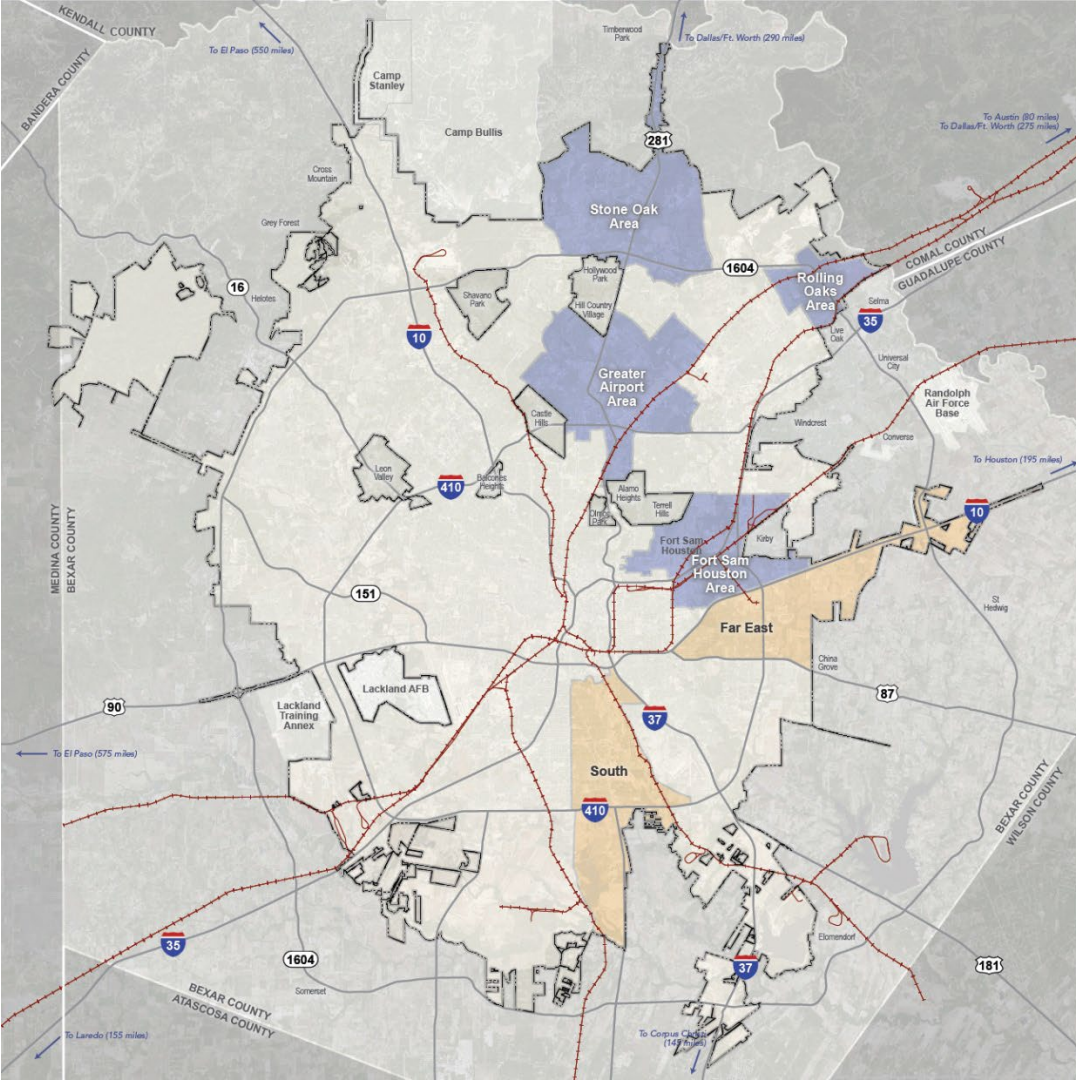
SA Tomorrow Plan Elements

- Growth & City Form
- Transportation & Connectivity
- Housing
- Jobs & Economic Competitiveness
- Community Health & Wellness
- Natural Resources
- Historic Preservation
- Military
- Public Facilities & Community Safety





- LEGEND**
-  City Boundary
 -  Major Highway
 -  Rail Line
 - Regional Center Plan Areas**
 -  Phase 1
 -  Phase 2
 -  Phase 3
 - Community Plan Areas**
 -  Phase 1
 -  Phase 2
 -  Phase 3
 -  Phase 4
 -  Phase 5



SA Area Planning Phases
TOMORROW

LEGEND

- City Boundary
- Major Highway
- Rail Line
- Regional Center Plan Areas**
- Phase 1
- Phase 2
- Phase 3
- Community Plan Areas**
- Phase 1
- Phase 2
- Phase 3
- Phase 4
- Phase 5



SA



TOMORROW

Schedule & Planning Team
Responsibilities

Sub-Area Planning Project Phases

1

Analysis & Visioning

Existing conditions; existing plans review; vision and goals; focus areas and corridors; Community Meeting #1

2

Plan Framework

Develop plan elements; focus areas and key corridors; transformative projects; Community Meeting #2 and #3

3

Recommendations & Implementation

Action and phasing strategies; draft Plan elements; Community Meeting #4

4

Documentation & Adoption

Public Hearings, adoption, final summary and ePlan

Why You're Here

- Key role in your community
- Unique and diverse perspectives
- Representative for geographic area and/or organizations within the Project Area
- Common goal: make your area the best place to **live, work and play!**



Roles and Responsibilities

- **Support the implementation** of the SA Tomorrow Comprehensive Plan
- **Provide advice and guidance** on the planning process
- **Provide input and feedback** on draft products
- **Serve as an ambassador** for the SA Tomorrow Sub-Area project
- **Summarize input** and feedback from others, for the Planning Team
- **Contribute to at least one formal outreach event**
- **Distribute** information through your community/organization

Rules of Decorum

- Meetings **begin and end at announced times**
- **Unanticipated alternative topics** typically wait for the next meeting
- **Open for public attendance** but designed as a work session
- **Basic Principles:**
 - Presence
 - Mutual respect
 - Empathy
 - Learning
- **Communicate** any ideas and concerns first **with the Project Manager**

Time Commitment

- Total of approximately 11 Planning Team Meetings
- Meetings every four to six weeks on average
- Typically 1.5- to 2-hour meetings
- Meeting location always in your Sub-Area
- We will schedule meetings as far in advance as possible
- We will send meeting materials as far in advance as possible

Timeline of Meetings

Community Meeting #1

● Meeting #1: Orientation; Sub-Area Plan Overview; SWOT; Vision and Goals



● Meeting #2: Confirm Vision & Goals; Land Utilization Analysis; Intro to Land Use (Focus Area ID)



● Meeting #3: Land Use (Housing & Economic Development Lens) (1 of 2)



● Meeting #4: Housing and Economic Development (Based on Land Use) (1 of 2)

Community Meeting #2



● Meeting #5: Land Use (2 of 2), Housing and Economic Development (2 of 2)



● Meeting #6: Mobility (1 of 2)



● Meeting #7: Mobility, Focus Areas, Amenities & Public Space (1 of 2)

Community Meeting #3



● Digital Design Workshop (DDW)



● Meeting #8: Review DDW; Neighborhood Profiles & Priorities; Amenities & Public Space (2 of 2)



● Meeting #9: Review of Maps; Plan Framework (1 of 2)



● Meeting #10: Plan Framework (2 of 2), Implementation Review

Community Meeting #4



● Meeting #11: Public Draft Review & Final Revisions, Process Feedback

SA



TOMORROW

Aviation Department



SAN ANTONIO INTERNATIONAL AIRPORT

STRATEGIC DEVELOPMENT PLAN



Presenting the

2040 STRATEGIC DEVELOPMENT PLAN

SA Tomorrow- Greater Airport Area Planning Team

April 21, 2022

SAN ANTONIO INTERNATIONAL AIRPORT IS OUR GATEWAY TO THE WORLD

We *must* accommodate the region's air travel needs in a world class manner



First and last
impression of the
City and the
region



Enables business
travel and
tourism economy



Has an economic
impact of \$5B
annually



45,000 jobs are
directly related
to the Airport



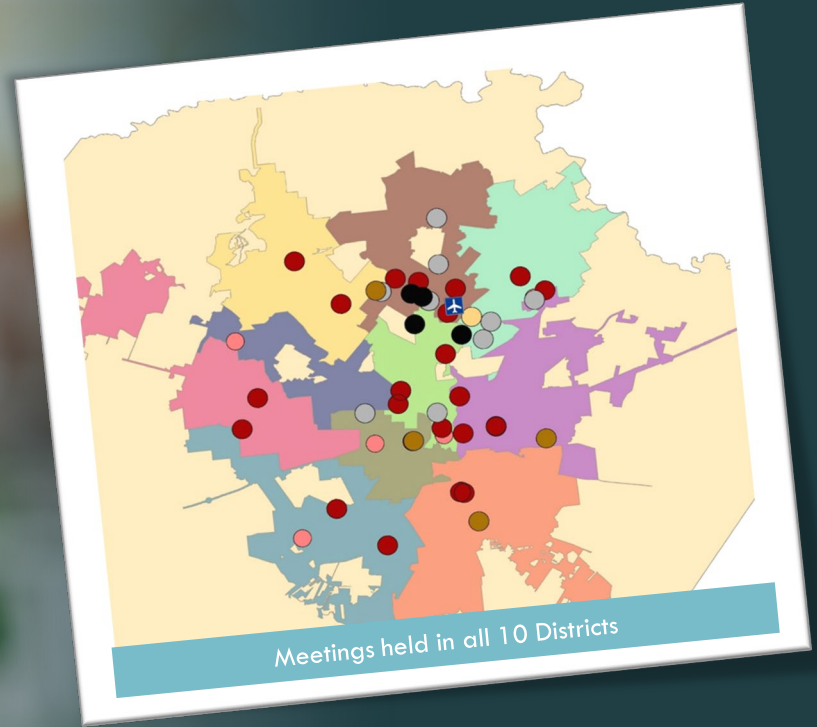
Increasing
congestion in
aging facilities is
not acceptable



SAN ANTONIO
INTERNATIONAL AIRPORT
STRATEGIC DEVELOPMENT PLAN

DIRECT ENGAGEMENT TO DATE

- **81 meetings held in 10 Districts**
- **3,600 surveys received**
- **90,000 direct engagements**
- **7 open houses**

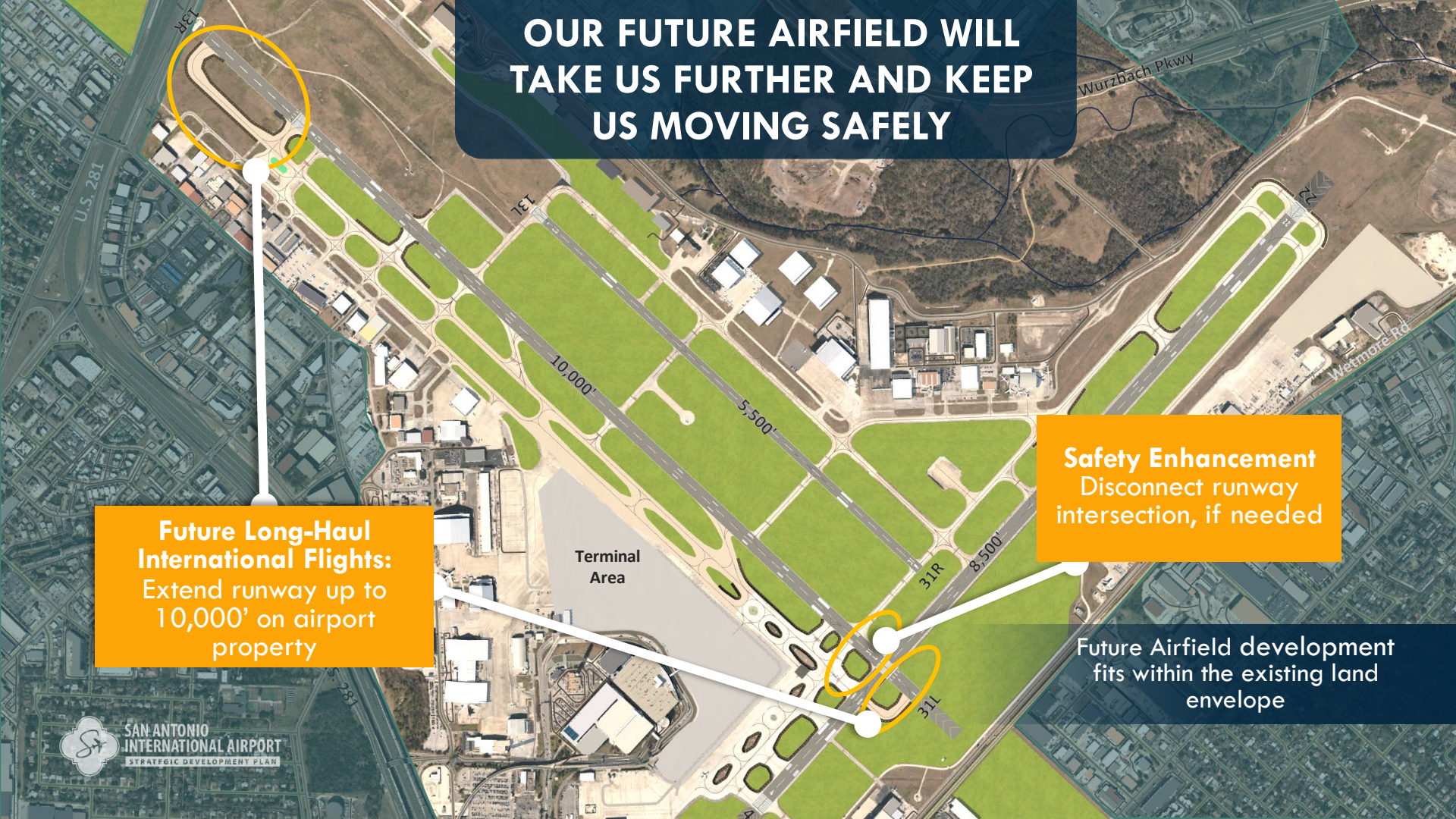


OUR FUTURE AIRFIELD WILL TAKE US FURTHER AND KEEP US MOVING SAFELY

Future Long-Haul International Flights:
Extend runway up to 10,000' on airport property

Safety Enhancement
Disconnect runway intersection, if needed

Future Airfield development fits within the existing land envelope



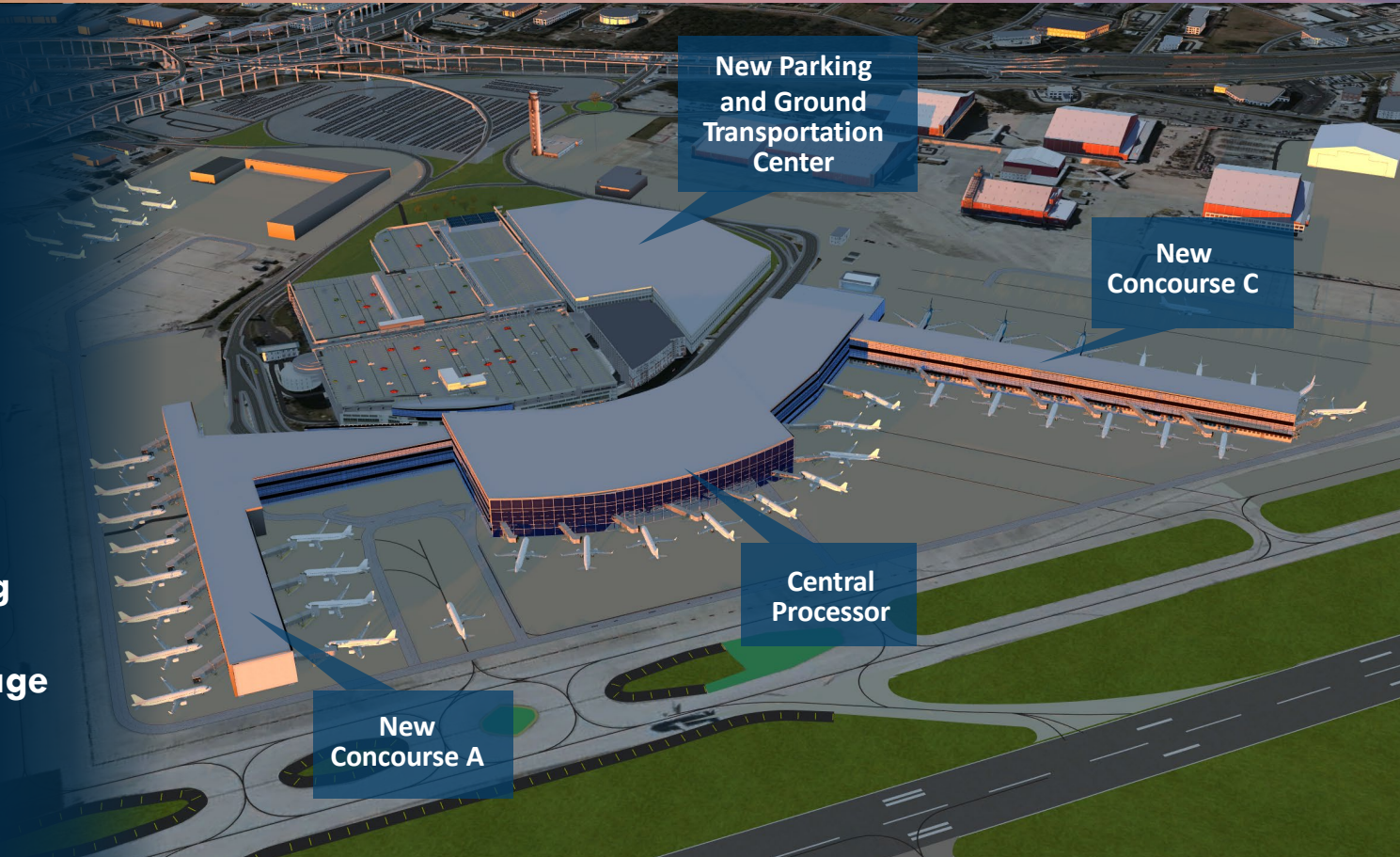
WE ENVISION A UNIFIED, WORLD-CLASS TERMINAL COMPLEX

Gates:

- Existing: 24
- ~2040+:
 - 37 narrow body or
 - 32 narrow body + 3 wide body

Features

- Central passenger screening
- More concessions
- Additional parking
- Walkways connecting to garage



New Parking
and Ground
Transportation
Center

New
Concourse C

Central
Processor

New
Concourse A

NEXT TERMINAL DEVELOPMENT PROGRAM IMPLEMENTATION

SDP/Master Plan

Program Definition
~ 12 months

Environmental Approval
~ 12 months

Architectural Design

~ 18 months to construction start

Construction

Financial Feasibility

Stakeholder Coordination

We are Here



**SAN ANTONIO
INTERNATIONAL AIRPORT**
STRATEGIC DEVELOPMENT PLAN

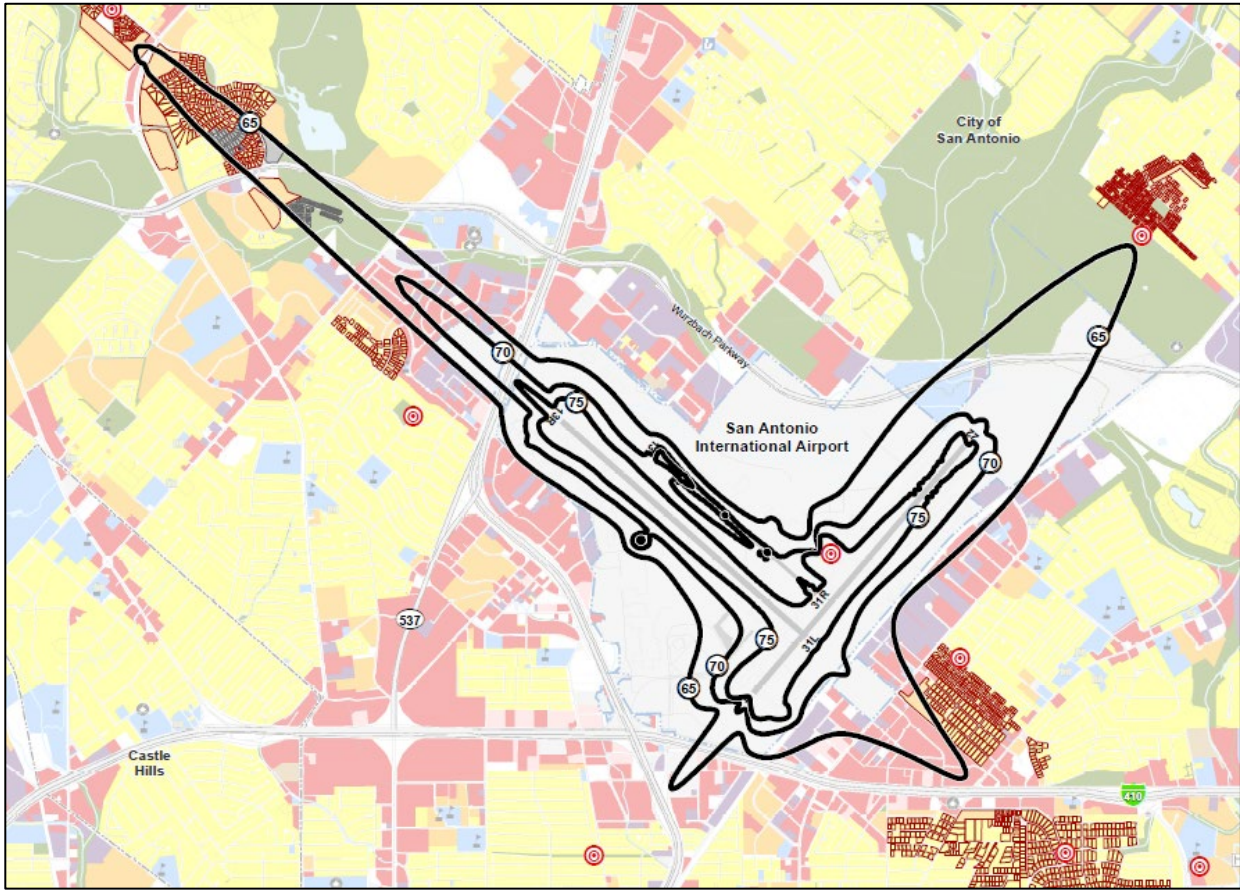
Thank you!

**2040 STRATEGIC
DEVELOPMENT PLAN:**
www.sanantonio.gov/SATfuture

Noise Exposure Map Update



SA Tomorrow- Greater Airport Area Planning Team – April 21, 2022



Noise Exposure Map (NEM)

- Describes Airport Layout and Operation
- Aircraft Related Noise Exposure
- Illustrates Noise/Land Use Compatibility
- Illustrated in decibels (dB)
- Day-Night Average Sound Level (DNL) Contours: 65, 70, 75
- Map illustrates existing conditions and future conditions

Two Rounds of Workshops featured October 2020 and February 2021

NEM Update was accepted by the FAA on June 1, 2021



Aviation Noise Program - NEM

Noise and Operations Monitoring System (NOMS)



12 permanent noise monitoring terminals (NMT) located around the Airport



Noise data integrated with FAA air traffic control tower radar data

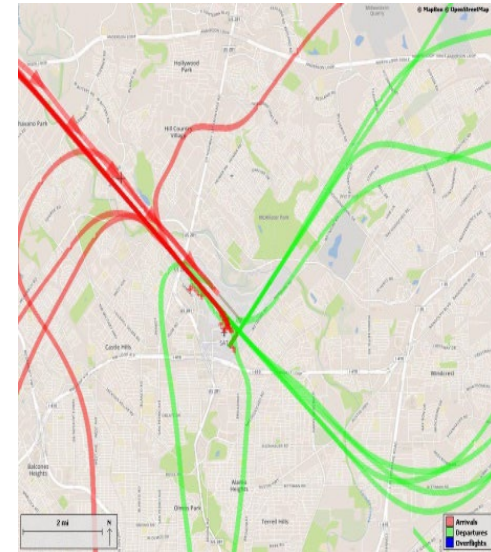


Analyze flight tracks, complaints and noise levels

NOMS allows the community to...

- View actual flight tracks and noise levels
- File noise complaints
- Understand flight patterns

Sample Flight Tracks Over SAT



More information can be found at:

<https://flysanantonio.com/business/about-saas/environmental-stewardship/noise-programs/>



Aviation Noise Program - NOMS

What tools do we have for the community?

- **Community Engagement Tools**
 - Noise Hotline: 210-207-3471
 - E-mail Collection: airportnoisehotline@sanantonio.gov
 - Smartphone APP:
 - viewpoint-app.emsbk.com/sat2
 - <https://flysanantonio.com/business/about-saas/environmental-stewardship/>
- **WebTrak Public Webpage: <https://webtrak.emsbk.com/sat2>**
 - View Flight Tracks and Noise Levels
 - File Noise Complaints
 - Understand Flight Patterns



Aviation Noise Programs

SA



TOMORROW

Q & A

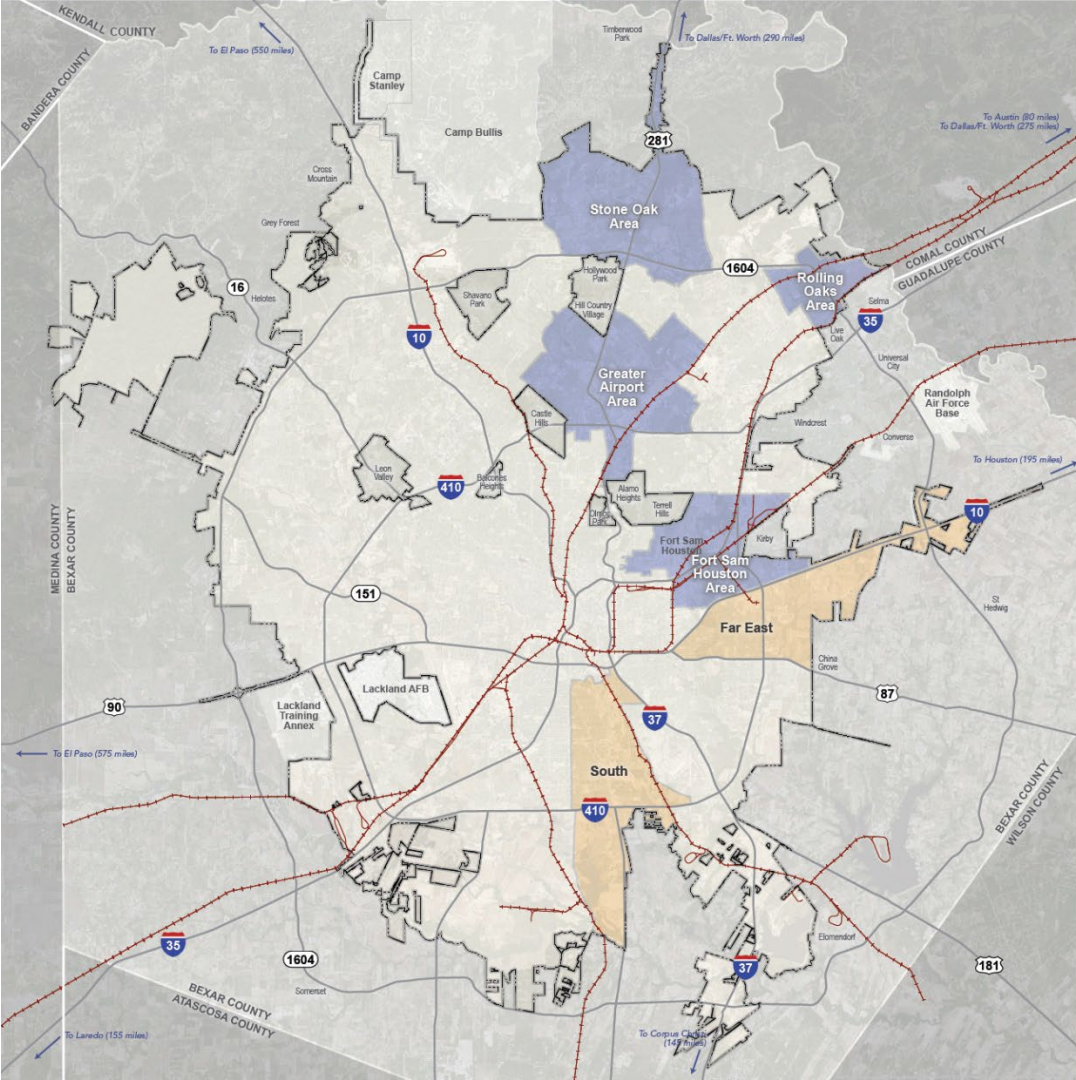


SA



TOMORROW

Existing Conditions



SA Area Planning Phases
TOMORROW

LEGEND

- City Boundary
- Major Highway
- Rail Line

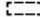



Regional Center Plan Areas

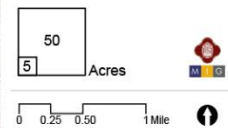
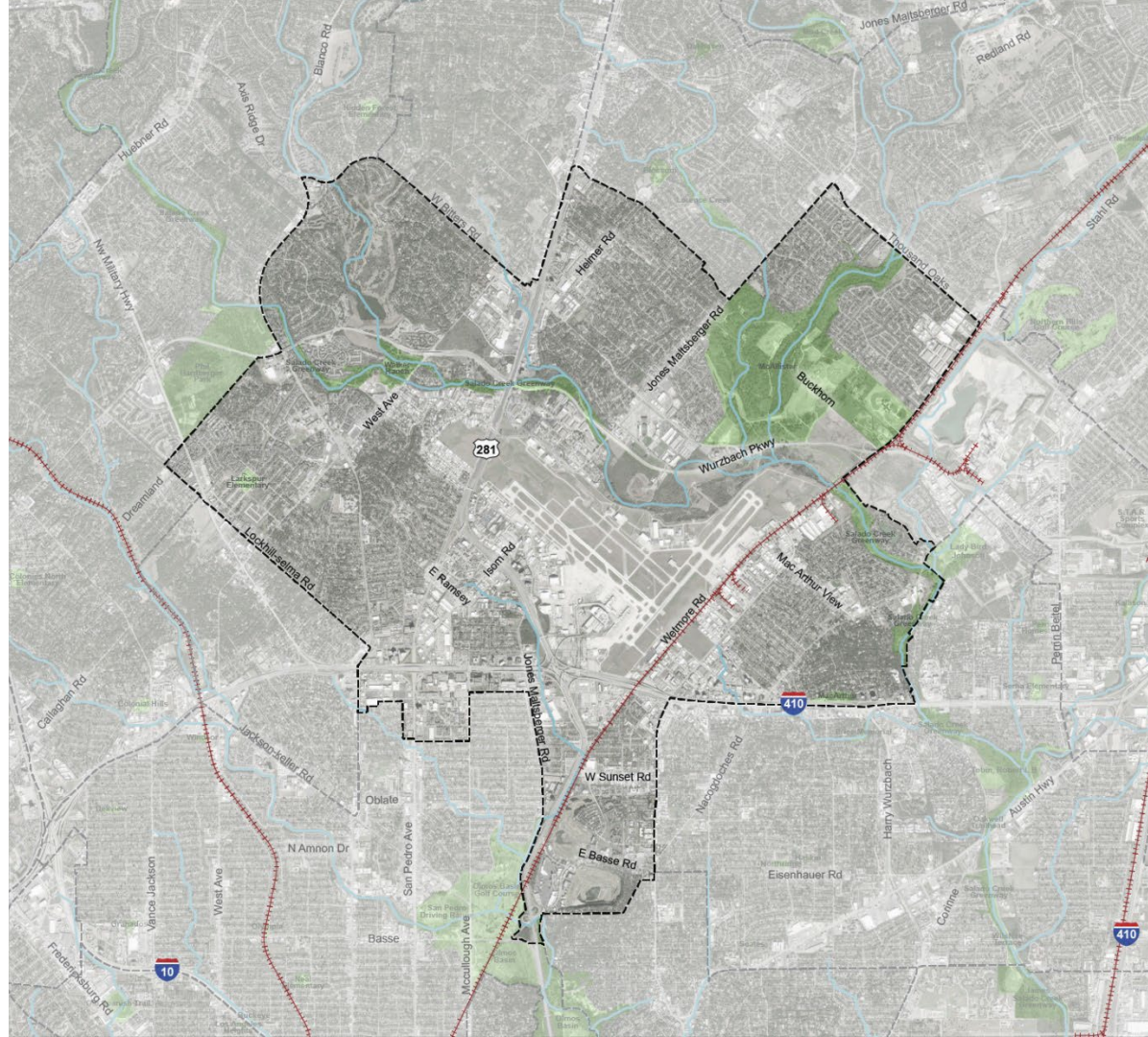
- Phase 1
- Phase 2
- Phase 3

Community Plan Areas

- Phase 1
- Phase 2
- Phase 3
- Phase 4
- Phase 5

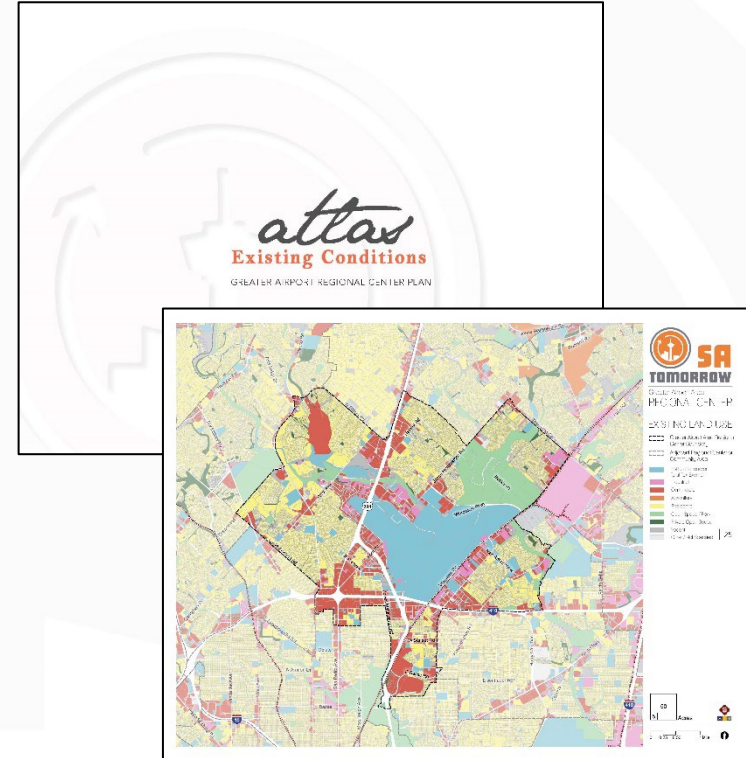
STUDY AREA

-  Greater Airport Area Regional Center Boundary
-  Adjacent Regional Center or Community Area
-  Public or Private Park or Open Space
-  River or Stream
-  Railroad Line



Existing Conditions Atlas

- Analysis and Overview of:
 - Existing Land Uses
 - Existing Transportation and Mobility
 - Civic Amenities
 - Parks and Open Space
 - Natural Systems
 - Equity
 - Access to Healthy Food
 - Access to Parks and Recreation
 - Access to Employment





SA



TOMORROW

Introduction to Equity

What is Equity?

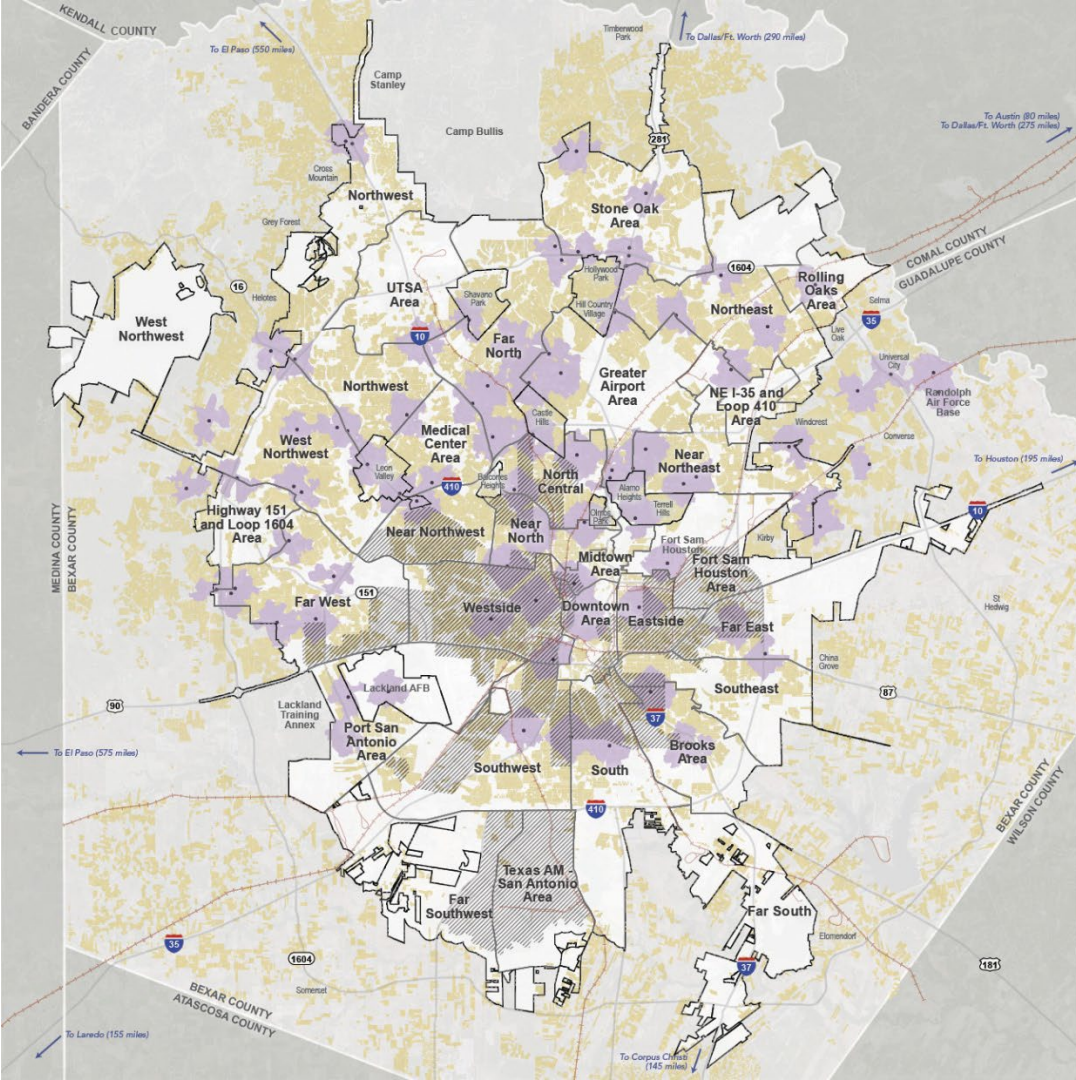
Equality



Equity



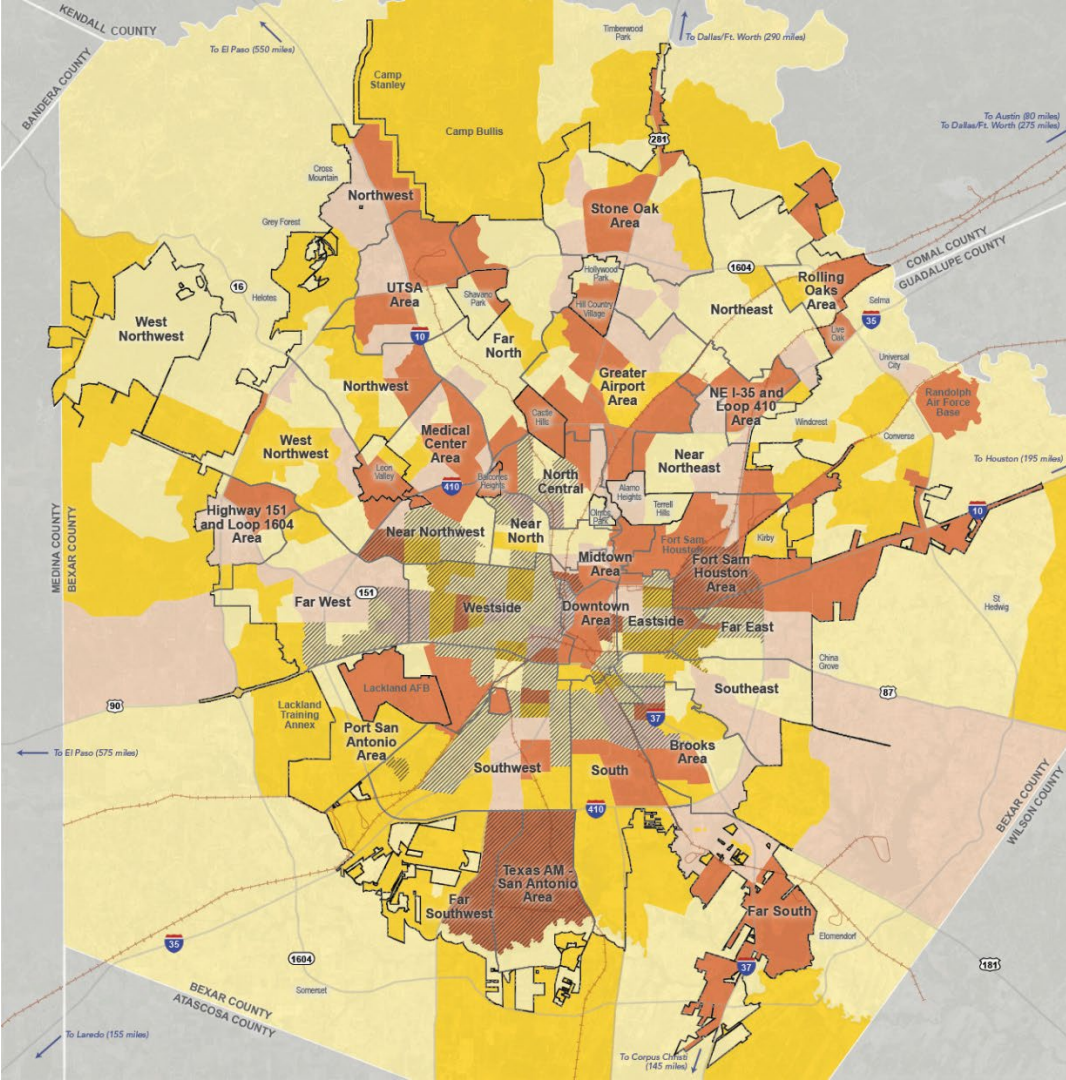
© 2017 Robert Wood Johnson Foundation.
May be reproduced with attribution.







- LEGEND**
- City Boundary
 - Planning Sub-Area Boundary
 - Major Highway
 - Rail Line

- Food Access**
- Supermarket
 - 1-Mile Walking Distance to a Supermarket
 - Residential Area Beyond 1-Mile Walking Distance to a Supermarket
 - * Lowest 20% Median Household Income and People Of Color






* Received scores of 9-10 on the San Antonio Equity Matrix + Demographic Indicator Maps. Indicates the median household income is between \$11,360 - \$42,594 and the percent of people of color is between 83.59% - 99.71%.



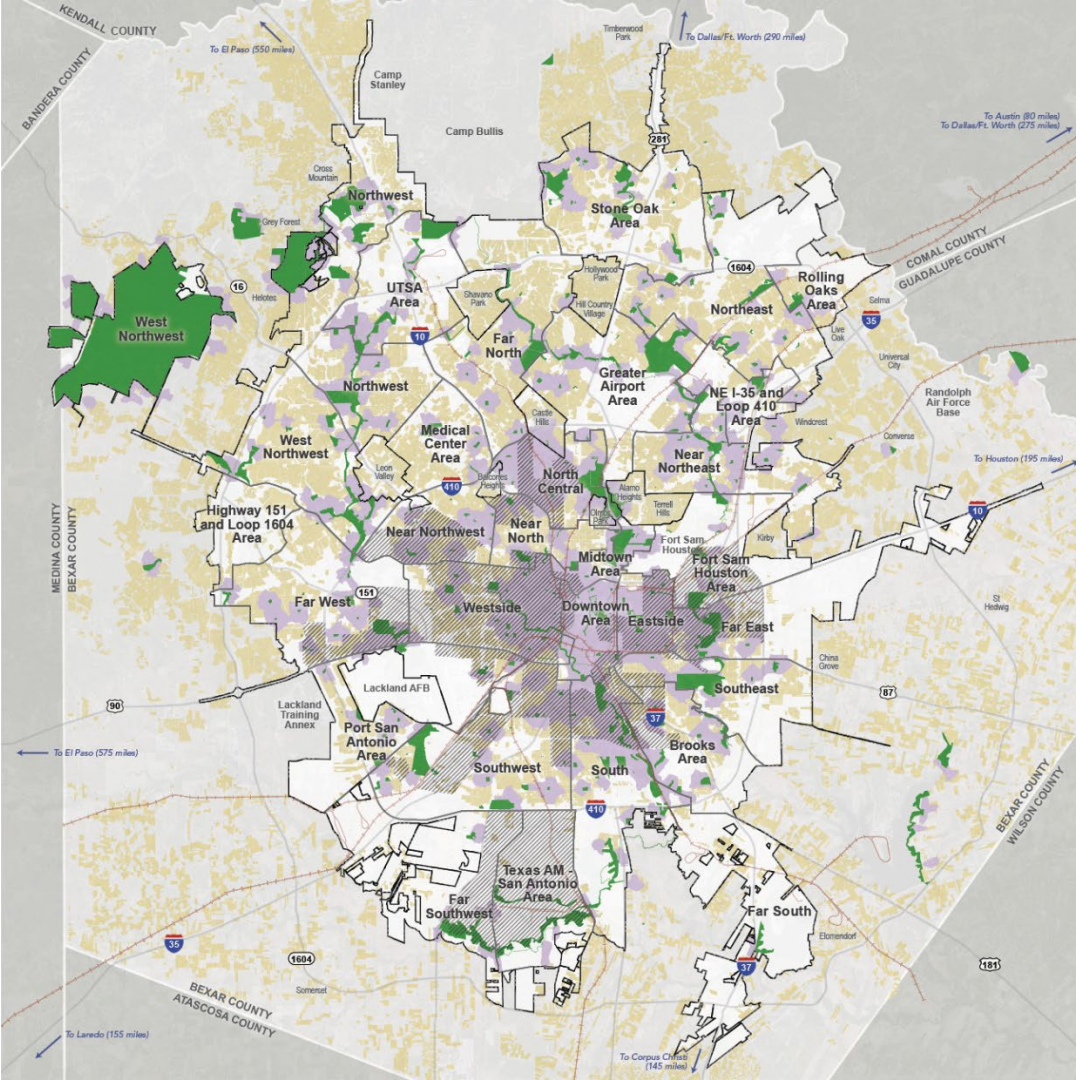
LEGEND

-  City Boundary
-  Planning Sub-Area Boundary
-  Major Highway
-  Rail Line

Employment Access

-  More than 2 Jobs for every 1 Household (>2:1)
-  Between 2 Jobs for every 1 Household and 1 Job for every 1 Household (2:1-1:1)
-  Between 1 Job for every 1 Household and 1 Job for every 2 Households (1:1-1:2)
-  Less than 1 Job for every 2 Households (<1:2)
-  * Lowest 20% Median Household Income and People Of Color

* Received scores of 9-18 on the San Antonio Equity Matrix + Demographic Indicator Maps. Indicates the median household income is between \$11,360 - \$42,594 and the percent of people of color is between 83.59% - 99.71%.



- LEGEND**
- City Boundary
 - Planning Sub-Area Boundary
 - Major Highway
 - Rail Line

- Park Access**
- Park Boundaries
 - 0.5-Mile Walking Distance to a Park
 - Residential Area Beyond 0.5-Mile Walking Distance to a Park
 - * Lowest 20% Median Household Income and People Of Color

* Received scores of 9-10 on the San Antonio Equity Matrix + Demographic Indicator Maps. Indicates the median household income is between \$11,360 - \$42,594 and the percent of people of color is between 83.59% - 99.71%.



SA



TOMORROW

Discussion: Vision & Goals

SA



TOMORROW

Next Steps

Next Steps

- Where can we meet and what time of day?
- Next Planning Team Meeting(s):
 - Meeting #2: Week of July 11th
 - Meeting #3: Week of August 8th
- Questions?
 - Jacob Howard, City of San Antonio
 - jacob.howard@sanantonio.gov
 - (210) 207-5441



Greater Airport Area Planning Team

Meeting #1

Orientation / SWOT / Vision & Goals

Thursday, April 21st 2022

Virtual

5:30 PM – 7:30 PM



Cambridge Systematics, Inc.

Bowtie

Economic & Planning Systems, Inc.

Auxiliary Marketing Services

Mosaic Planning and Development Services

Worldwide Languages

Able City

WSP