



# Near Northwest Community Area

Planning Team Meeting #1

Introductory Meeting and Project Overview

Thursday, July 11th, 2024

The Whitley Event Center, Oblate School of Theology

5:30 pm



Cambridge Systematics, Inc.  
Bowtie

Economic & Planning Systems, Inc.  
Auxiliary Marketing Services

Mosaic Planning and Development Services

Worldwide Languages

Able City

# Near Northwest Project Team



***Mia Trevino***  
Project Manager  
City of San Antonio



***Marco Hinojosa***  
Project Manager  
MIG

# Meeting Agenda

- **Planning Team Introductions**
- **Timeline and Planning Team Meetings Schedule**
- **Existing Conditions**
- **Meeting Objectives:**
  - **Identify Assets, Challenges, and Opportunities**
  - **Begin to identify Vision and Goals for the Plan**

# Planning Team

- **Neighborhood Association Representatives and Contacts**
- **Local Stakeholders and Businesses**
- **Public Agencies and Municipalities**
- **Is Anyone Missing?**

# Planning Team Introductions

- **Name?**
- **Organization or affiliation with the area?**
- **What do you like about the area?**

# Timeline of Meetings

**Planning Team Meeting 1 (July 11th, 2024)**

**Community Meeting 1 (TBD)**

**Planning Team Meeting 2 (TBD)**

**Planning Team Meeting 3 (TBD)**

**Planning Team Meeting 4 (TBD)**

**Planning Team Meeting 5 (TBD)**

**Planning Team Meeting 6 (TBD)**

**Community Meeting 2 (TBD)**

**Planning Team Meeting 7 (TBD)**

**Planning Team Meeting 8 (TBD)**

**Planning Team Meeting 9 (TBD)**

**Digital Design Charrette (DDC) (TBD)**

**Planning Team Meeting 10 (TBD)**

**Community Meeting 3 (TBD)**

**Planning Team Meeting 11 (TBD)**

**Community Meeting 4 (TBD)**

**Planning Team Meeting 12 (TBD)**

Orientation | Sub-Area Planning Overview | Vision and Goals

Introduction to Land Use | Confirm Vision & Goals

Introduction to Mobility

Introduction to Housing & Economic Development

Introduction to Community Amenities & Public Space

Introduction to Focus Areas

Land Use | Focus Areas

Mobility | Focus Areas

Housing & Economic Development | Focus Areas

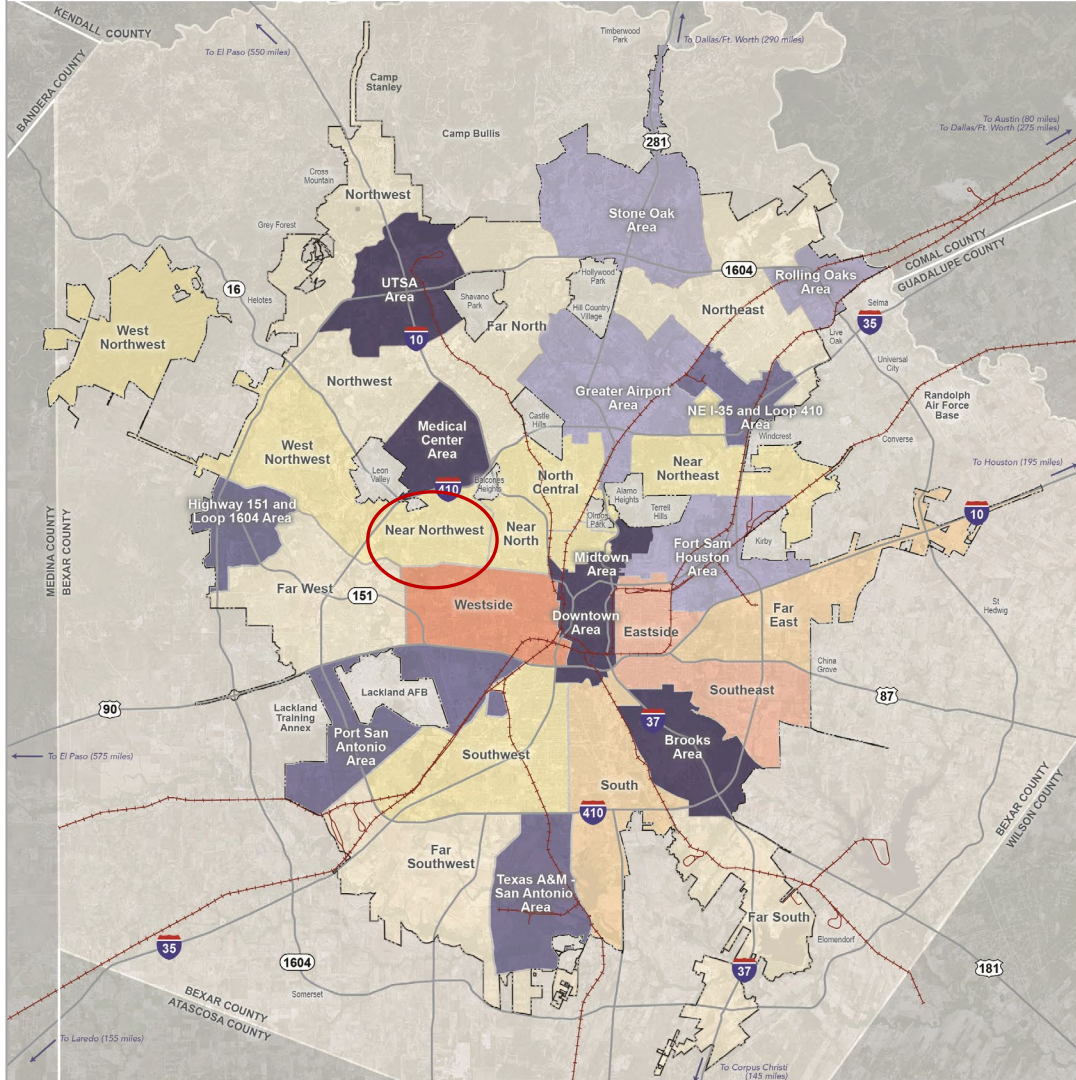
Visualization of Two Selected Sites

Community Amenities & Public Space | Focus Areas | DDC

Plan Priorities & Implementation

Public Draft Review






# SA TOMORROW

Area Planning Phases






LEGEND

-  City Boundary
-  Major Highway
-  Rail Line

Regional Center Plan Areas

-  Phase 1
-  Phase 2
-  Phase 3

Community Plan Areas

-  Phase 1
-  Phase 2
-  Phase 3
-  Phase 4
-  Phase 5

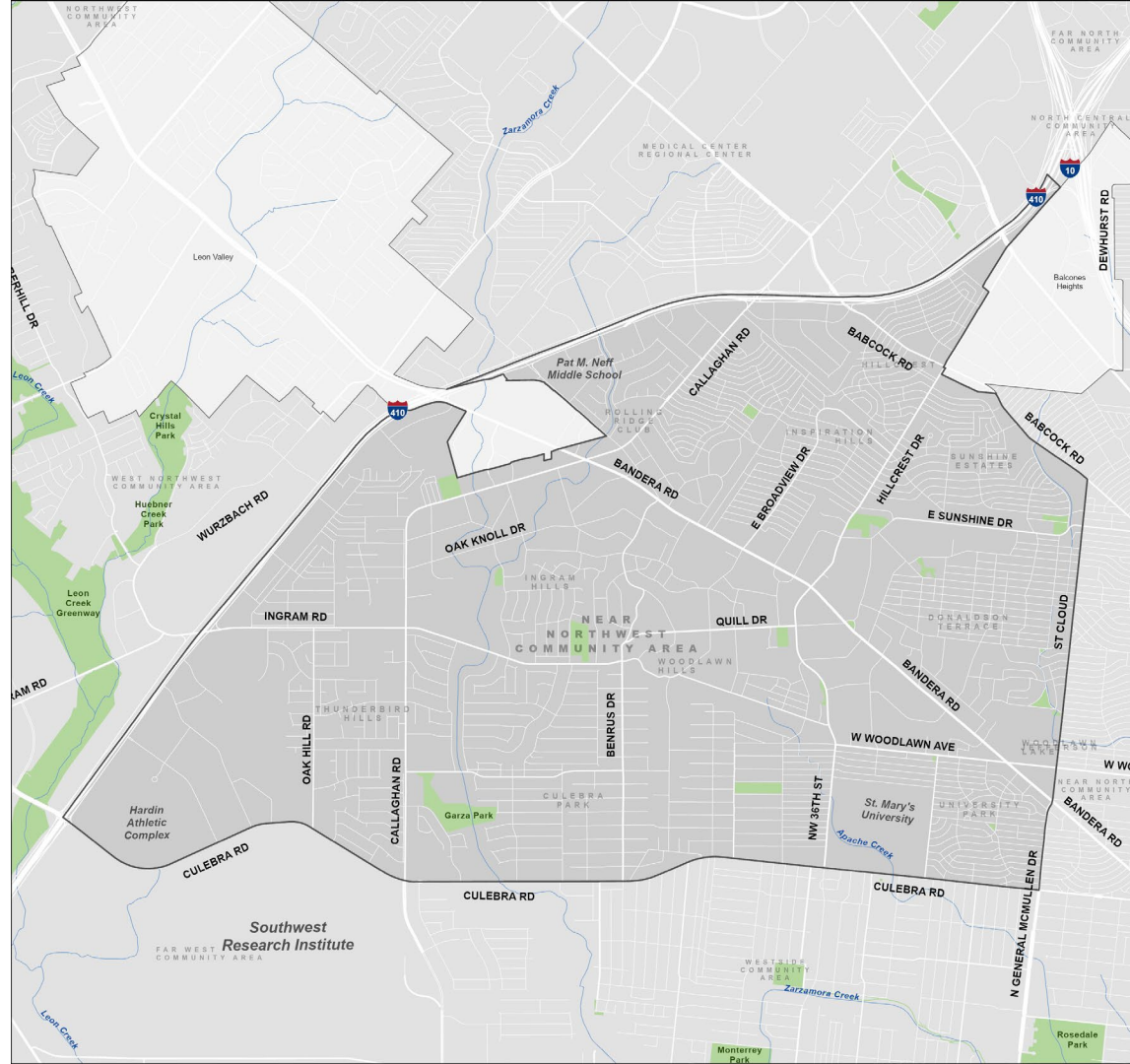
# Near Northwest Community Area Plan



## Near Northwest Community Area

### Legend

- SA Tomorrow Sub-Area Boundary
- City of San Antonio Boundary
- Rivers or Streams
- Public or Private Park or Open Space
- SA Tomorrow Sub-Area
- City of San Antonio



0 1/4 1/2 1 Miles



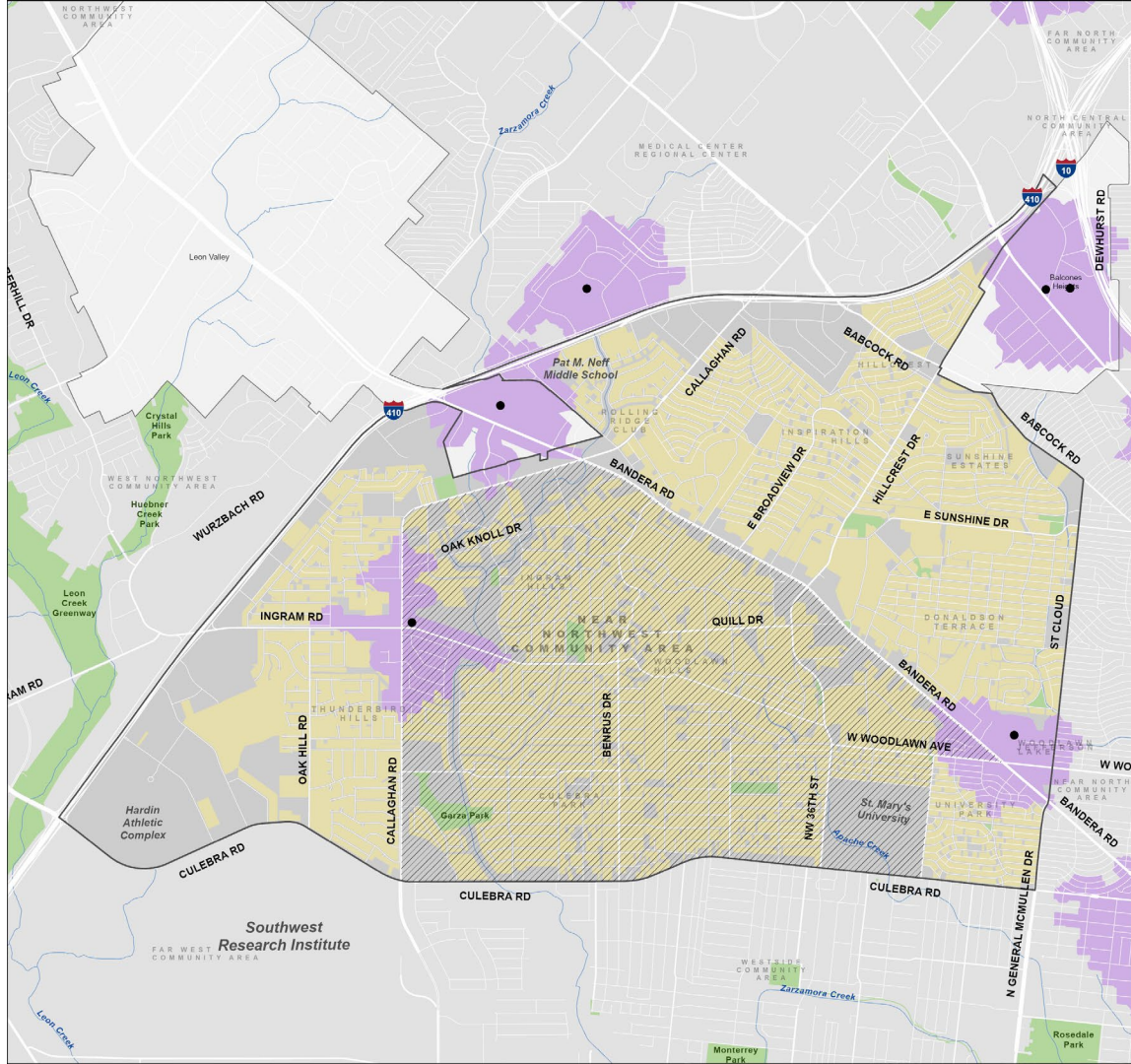


# Existing Conditions Atlas

- **Analysis and Overview of:**

- Existing Demographics
- Existing Land Uses
- Existing Transportation and Mobility
- Civic Amenities
- Parks and Open Space
- Natural Systems
- Equity
  - Access to Food
  - Access to Healthcare
  - Access to Parks
  - Access to Transit






## Near Northwest Community Area


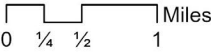
### Food Access

- SA Tomorrow Sub-Area Boundary
- City of San Antonio Boundary
- Rivers or Streams
- Public or Private Park or Open Space
- SA Tomorrow Sub-Area
- City of San Antonio
- Military Bases
- Food Access**
- Supermarket
- 10-Minute Walking Distance to a Supermarket
- Residential Area Beyond 10-Minute Walking Distance to a Supermarket
- High Equity Score Areas\*

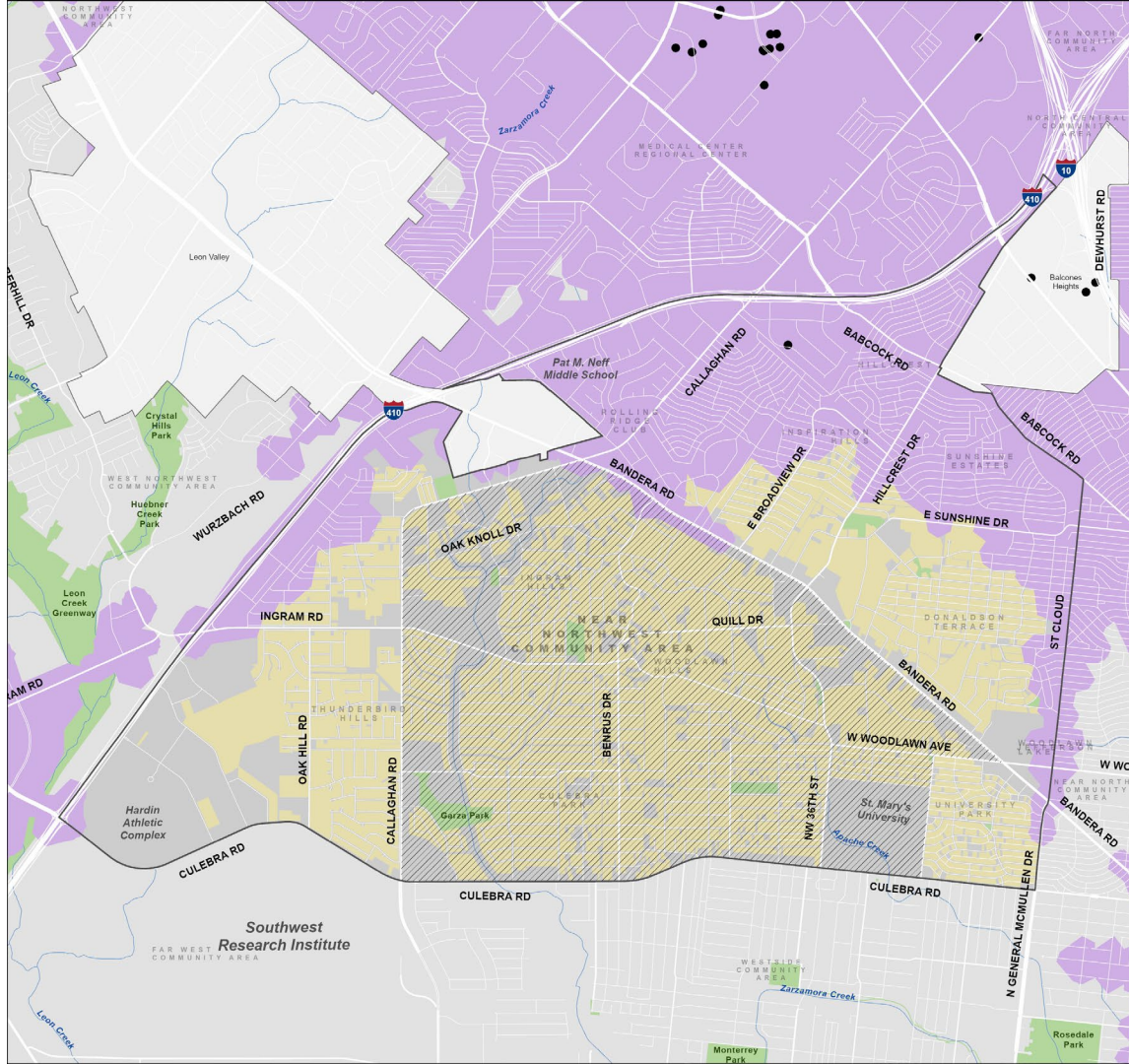
\*High Equity Score Areas ≥ 8  
 For more information visit:  
[www.sanantonio.gov/Equity/Initiatives/Atlas](http://www.sanantonio.gov/Equity/Initiatives/Atlas)



PLANNING  
MIG

Miles



## Near Northwest Community Area

### Healthcare Access

- SA Tomorrow Sub-Area Boundary
- City of San Antonio Boundary
- Rivers or Streams
- Public or Private Park or Open Space
- SA Tomorrow Sub-Area
- City of San Antonio

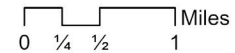
### Healthcare Access

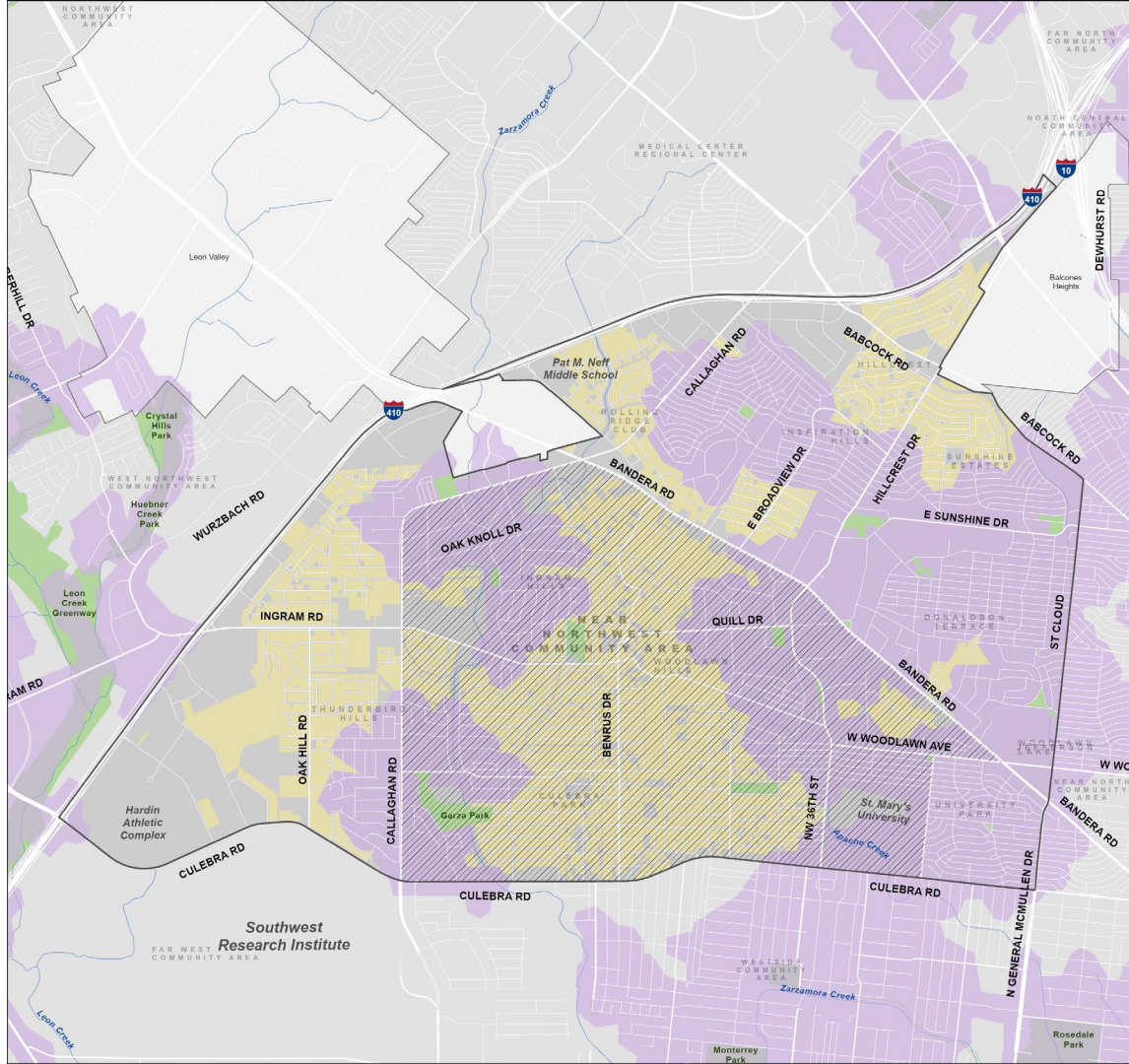
- Emergency Healthcare
- 30-Minute Transit Ride to Emergency Healthcare
- Residential Area Beyond 30-Minute Transit Ride to Emergency Healthcare
- High Equity Score Areas

\*High Equity Score Areas  $\geq 8$   
 For more information visit:  
[www.sanantonio.gov/Equity/Initiatives/Atlas](http://www.sanantonio.gov/Equity/Initiatives/Atlas)







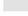


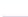


PLANNING



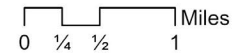


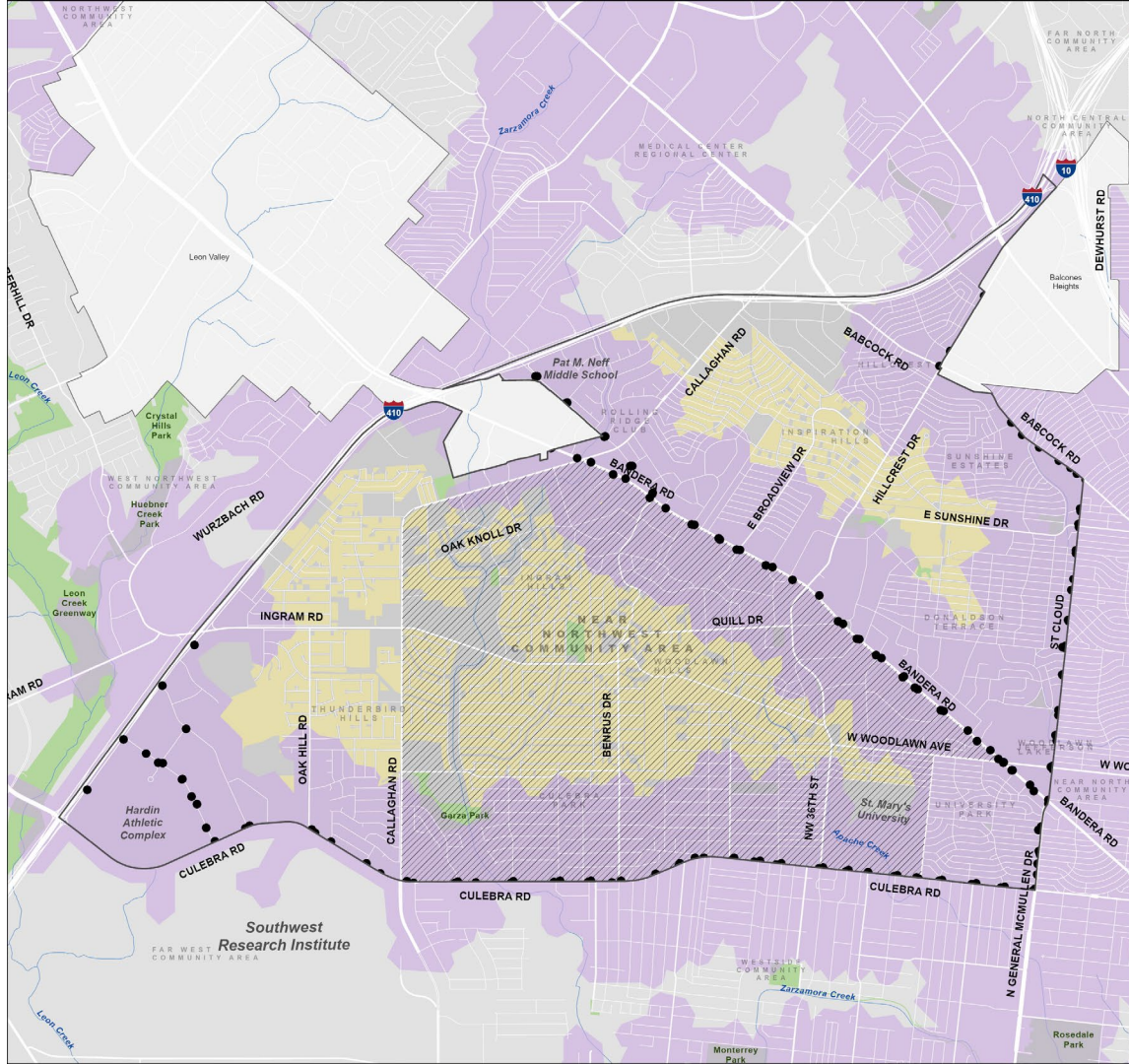
## Near Northwest Community Area

### Park Access

-  SA Tomorrow Sub-Area Boundary
-  City of San Antonio Boundary
-  Rivers or Streams
-  SA Tomorrow Sub-Area
-  City of San Antonio
-  Military Bases
-  Public or Private Park or Open Space
-  10-Minute Walking Distance to a Park
-  Residential Area Beyond 10-Minute Walking Distance to a Park
-  High Equity Score Areas

\*High Equity Score Areas  $\geq 8$   
 For more information visit:  
[www.sanantonio.gov/Equity/Initiatives/Atlas](http://www.sanantonio.gov/Equity/Initiatives/Atlas)





## Near Northwest Community Area

### Transit Access

- SA Tomorrow Sub-Area Boundary
- City of San Antonio Boundary
- Rivers or Streams
- Public or Private Park or Open Space
- SA Tomorrow Sub-Area
- City of San Antonio

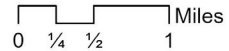
### Transit Access

- High-Frequency Transit Stop
- 10-Minute Walking Distance to a High Frequency Transit Stop
- Residential Area Beyond 10-Minute
- Walking Distance to a High Frequency Transit Stop
- High Equity Score Areas\*

\*High Equity Score Areas  $\geq 8$   
 For more information visit:  
[www.sanantonio.gov/Equity/Initiatives/Atlas](http://www.sanantonio.gov/Equity/Initiatives/Atlas)



PLANNING





Loop 410 near Ingram Road



Apartments at Mira Vista



**SA**



**TOMORROW**

Discussion:

Visioning

Assets, Challenges, and Opportunities



# What is a Vision Statement?

- **Describes a place in the future**
- **10 – 15 years into the future**
- **Aspirational**
- **Very General**
- **Sets a broad direction for content of the plan**

# How do we develop a "Vision"?

- **Initial discussion with the Planning Team 1 [*Today*]**
- **Repeat at Community Meeting 1 / Online Survey 1**
- **Review of Draft at Planning Team Meeting 2**
- **Open Draft for Comment at Community Meeting 2**

# Group Discussion

## *Assets*

**1**

**What do you  
like about  
the Area?**

## *Challenges*

**2**

**What would you  
change about  
the Area?**

## *Opportunities*

**3**

**What is  
missing in  
the Area?**

**SA**



**TOMORROW**

Next Steps

# Next Steps

## **Planning Team Meeting 1** | *Today*

- Project Overview
- Vision and Goals

## **Community Meeting 1** | *Late September*

- Project Overview
- Vision and Goals

## **Planning Team Meetings 2** | *Mid October*

- Confirm Vision and Goals
- Introduction to Land Use

## **Planning Team Meetings 3** | *Mid November*

- Introduction to Mobility

***Mia Trevino***, Senior Planner  
City of San Antonio Planning Department

E: [Mia.Trevino@SanAntonio.gov](mailto:Mia.Trevino@SanAntonio.gov)

P: (210) 207-5452



# Near Northwest Community Area

Planning Team Meeting #1

Introductory Meeting and Project Overview

Thursday, July 11th, 2024

The Whitley Event Center, Oblate School of Theology

5:30 pm



Cambridge Systematics, Inc.

Bowtie

Economic & Planning Systems, Inc.

Auxiliary Marketing Services

Mosaic Planning and Development Services

Worldwide Languages

Able City