

## OPEN HOUSE MEETING SUMMARY

### South Community Area Community Meeting #3

**Meeting Date:** May 11<sup>th</sup>, 2023

**Time:** 5:30 pm – 7:30 pm

**Location:** Stinson Municipal Airport Conference Center, 8535 Mission Rd.

#### Planning Staff & Consultant Team

Debora Gonzalez, Project Manager

Rudy Nino, AICP, Assistant Director

Chris Ryerson, AICP, Planning Administrator

Ana Villareal, Senior Planner

David Powell, Senior Planner

Heather Yost, Senior Planner

Jacob Howard, Senior Planner

Iris Gonzalez, Special Project Manager

Krystin Ramirez, Project Manager (MIG)

#### Meeting Objectives:

The purpose of the third Open House was to collect feedback from the public on the draft Recommendations and Strategies for Land Use, Housing and Economic Development and gather input on the Amenities and Public Spaces, Focus Areas, and Mobility. We had 54 attendees signed in at the sign-in table, and several engagement activities, facilitated by Planning staff, were available for participants to record their feedback. The project manager was also conversing with attendees, at various stations, throughout the meeting.

#### Meeting Format

The meeting was entirely open-house and had a brief presentation about halfway into the open-house. At the entrance to the conference room a sign-in table was set up where attendees were encouraged to sign in and sign up for updates related to future public meetings, as well as handouts with general infographics related to the plan area and the SA Tomorrow planning process. The conference room was also organized with stations to collect input and ideas from the attendees, for the future of the area.

### Draft Recommendations and Strategies

The first station displayed the draft Recommendations and Strategies for Land Use, Housing and Economic Development. Attendees were encouraged to place a dot on the scale indicating their agreement along with comments. Below are the draft Recommendations and Strategies for Land Use, Housing and Economic Development, along with the associated comments:

<b>Draft Land Use Recommendations and Strategies</b>					
	Strongly Disagree	Disagree	Neutral	Agree	Strongly Agree
LU1				3	6
LU2	1			5	1
LU3	2			7	1
LU4			2	1	
<b>Public Comments:</b> <ul style="list-style-type: none"> <li>• Add protect the missions to LU2 recommendation.</li> <li>• Development must minimize impervious cover and drainage &amp; pollution problems.</li> <li>• Consider rural and agricultural preservation</li> </ul>					
<b>Draft Housing Recommendations and Strategies</b>					
H1	1			8	1
H2	3	3	1	1	2
H3				6	8
<b>Public Comments:</b> <ul style="list-style-type: none"> <li>• H1 Building standards, code site visits on homes that are dangerous premises.</li> <li>• H2 Remove criminal elements and assist residents.</li> <li>• Support housing for middle income residents that want to downsize and age in place.</li> </ul>					
<b>Draft Economic Development Recommendations and Strategies</b>					
ED1			3	2	3
ED2		3	1	3	4
ED3		1	1	8	6
<b>Public Comments:</b> <ul style="list-style-type: none"> <li>• ED1 Repurpose hotels/motels to renovate/enhance businesses to attract tourism and culture.</li> <li>• ED 2 Accommodate roadside vendors along Roosevelt. <ul style="list-style-type: none"> <li>• Attract economic development that creates long-term jobs and income.</li> </ul> </li> <li>• ED 3 Increase ways to attract foot traffic along Roosevelt. <ul style="list-style-type: none"> <li>• Extend business hours for tourists and residents.</li> <li>• In support of incentivizing small/local business opportunities.</li> </ul> </li> </ul>					

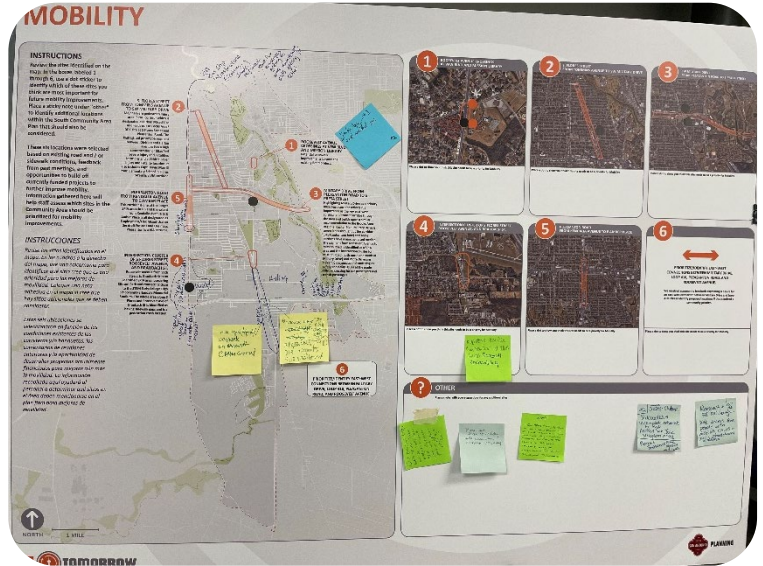


### Mobility

The second station displayed Six Mobility Sites that were selected based on existing road and/or sidewalk conditions, feedback from past meetings, and opportunities to build off currently funded projects to further mobility. Meeting Participants were asked to rank the six in order of priority. Subsequently, participants were asked to indicate what type of improvement they would like to see within each of the areas, either by using an image of an improvement provided by staff or by leaving a note.

#### Public Comments:

- E. Chavaneaux and St Rita (Judy's restaurant) close the street
- Slow speeding along Moursund Blvd when coming off Loop 410
- Bus stops needed on both sides, people crossing everywhere
- Safe bike paths (Roosevelt & Riverside)
- Better traffic access management (slow speed and move traffic flow)
- Footpath bridge to cross the river at Roosevelt & Riverside currently now have to walk/bike across the bridge in traffic lane
- Improve sidewalks + add crosswalks along mission rd & Pleasanton rd
- Provide better bus stops, pedestrian crossings along Roosevelt rd in front of San Jose & Mission theater/library (maybe free trolley-downtown)
- Where TJ max is it needs more traffic lighting. Lots of cows and people get run over on Roosevelt.
- Moursoun & E. Villaret
  - needs signage & crosswalk
  - speed issues
  - street lighting (bus stops VIA and school)
- Espada rd: traffic drivers conflict w/bikes and pedestrians
- Braubach to Sava st: traffic congestion
  - Roosevelt and Riverside add crosswalk and walkover bridge.
  - Add pool/splash pads
  - Roosevelt south of Military needs wheelchair access to Walmart
  - On Ashley rd, the Stinson Airport there's a dead end. A barricade at metal poles doesn't allow passage, mobility to the other side. This needs attention by making accessible to the public.



#### Site #1 Roosevelt Crossings at VFW BLVD & Mission Library

##### Public Comments:

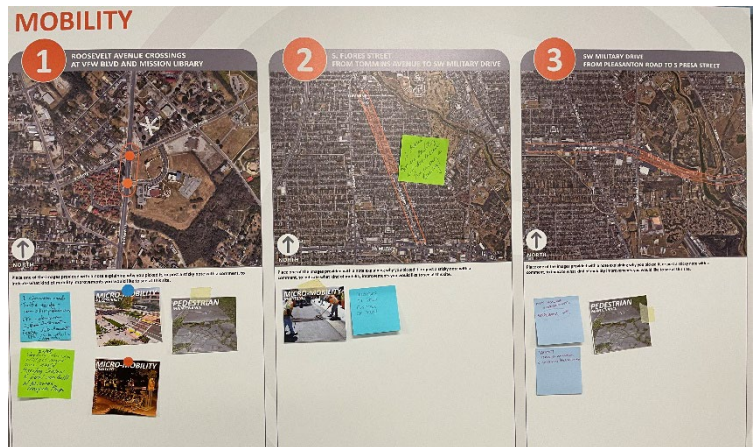
- Intersection needs traffic study (cars, bikes, pedestrian) Roosevelt, Dagley St & VFW
- Dagley-white-Roosevelt-VFW Blvd.: need pedestrian scale lighting and flashing lights and traffic speed signs
- Make intersections safer for people and cars
- Add accessibility for micro-mobility and for all users and lighting
- Maintain pedestrian sidewalks
- Need traffic safety turn along Roosevelt & Presa specifically near the motels



**Site #2 S. Flores St from Tommins Avenue to SW Military Dr**

**Public Comments:**

- Roosevelt & SE Military: safe access for people with mobility issues & using wheelchairs and walkers
- Curtis & Clutter area: incomplete sidewalks network in the MSJ neighborhood
  - S. Flores & Southcross: pedestrian signage lights and crosswalks for all directions
  - Incentivize for small business are needed
- Street/sidewalks maintenance for micro-mobility



**Site #3 SE Military from Pleasanton Rd to S. Presa St.**

**Public Comments:**

- Add sidewalks and improvements along Petaluma St
- Improve safety (homeless issue near Petaluma st)
- Improve street maintenance and sidewalks

**#4 Intersection clusters of S. Flores, Roosevelt Ave & Braubach St.**

**Public Comments:**

- Improve traffic congestion
- Concerns about new police substation
- Ingress & egress at this dangerous intersection - at feed store (Flores-Ashley-Roosevelt)
- Add public art at pedestrian crosswalks and bus stops
- Add light to bus stops
- Safety at the park & Roosevelt
- The traffic signs (stop and yield) need to be replaced for the public to see better
- This intersection is well known for car accidents, drivers go over speed limit

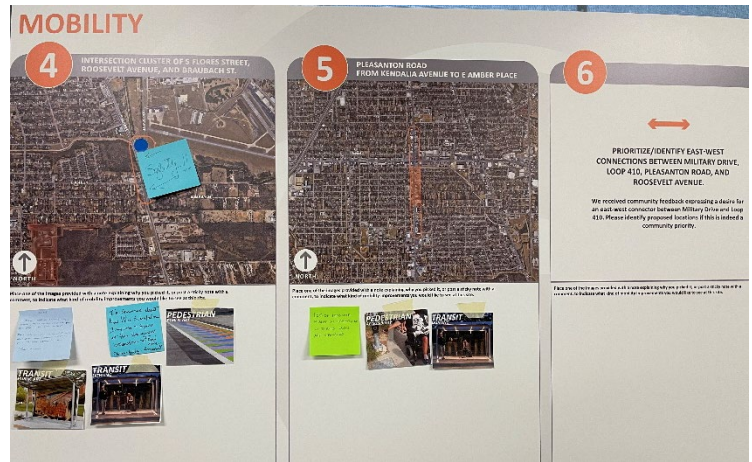




### #5 Pleasanton Rd from Kendalia Ave to E Amber Pl.

#### Public Comments:

- Add VIA bus stop infrastructure (seating, shade) important route for workers getting to downtown and kids getting to school
- Need pedestrian crosswalks (bibliotech)
- Lots of roadwork needed on Pleasanton to expand lanes and add sidewalks
- Add pedestrian and ADA accessibility
- Add light to bus stops



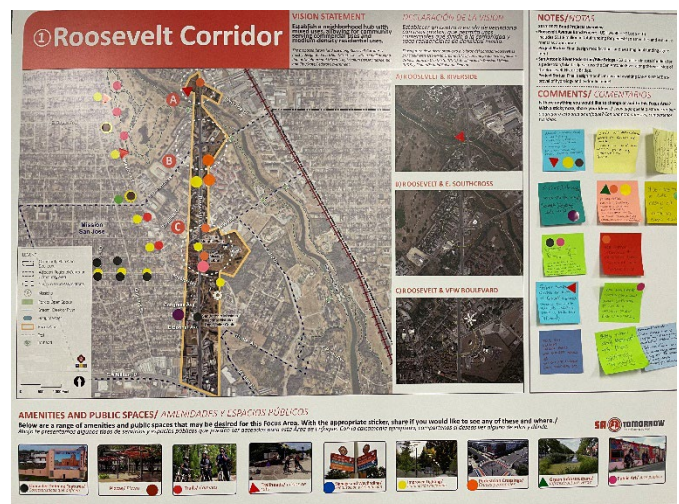
### Focus Areas

The third station displayed aerial images of the draft focus areas, and attendees were asked to indicate what type of amenities and public spaces they would like to see within each of the focus areas, or by leaving a post-it comment.

### Focus Area 1: Roosevelt Corridor

#### Public Comments:

- Reuse abandoned houses in Riverside Park, could be for urban gardens, green space, parks.
- Add lighting along mission rd, trail rest area w/water fountain and signage - lots of visitors biking, families and bike groups
- Nice place for a park at mission rd & Southcross across school
- Great corridor to create art & define structures that show case close to 100yr early develop + old homes
- Add pedestrian crosswalks along mission rd & Pleasanton rd
- Provide lighting and pedestrian crossings along Roosevelt rd in front of San Jose & Mission theater/library
- Plaza/eateries/artisans where the bowling alley property is or where nichas was supposed to build or the land Liftschutz bought or Huizar Street
- Other comments:
  - Move out unkept triller parks, low-budget hotels or bring up to code standards
  - Roosevelt corridor needs clean-up of properties, business, residential, vacant areas, code compliance can help, encourage owners to improve their property and encourage cleaners



## South Community Area Community Meeting #2

- Add beautifying fence (not a wall) around golf course. It can be a gorgeous walk/bike path w/art

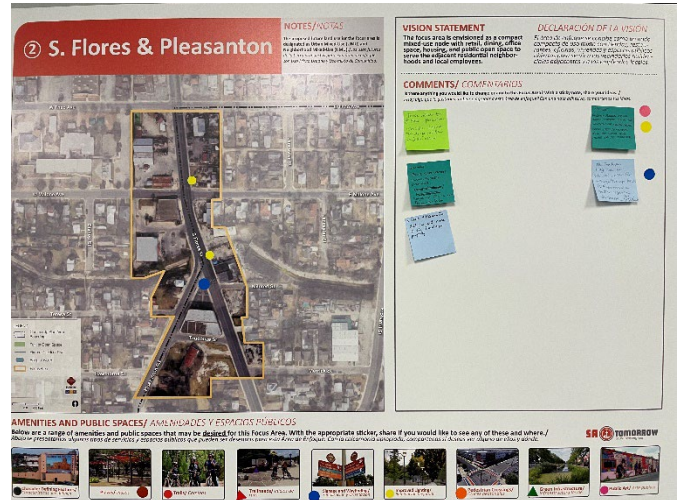
### Main Takeaways:

- **Safe crosswalks**
- Create **urban gardens and parks**
- Improve **sidewalks and bus shelters/stops**
- Add **pedestrian scale lighting**
- **Add art**

### Focus Area 2: S. Flores & Pleasanton

#### Public Comments:

- Revise intersection at S. Flores & Pleasanton to make it safer for all users by adding art/lighting/signage etc
- Add art to the Toudouze property at S. Flores & Pleasanton
- Other Comments:
  - Consider creating another police substation maybe on S. Flores or Pleasanton roads
  - Extend Focus Area further south to Division or Southcross (same ideas/concepts will be good for more of the corridor)
  - Toudouze bldg can be utilized better for signage/transportation (VIA) to provide better signage for traffic for Flores/Pleasanton
  - Consider closing Toudouze to cut flow for maybe an extension of better public use



### Main Themes:

- **Improve lighting, traffic safety and flow**
- **Add art**
- **Better signage for traffic**

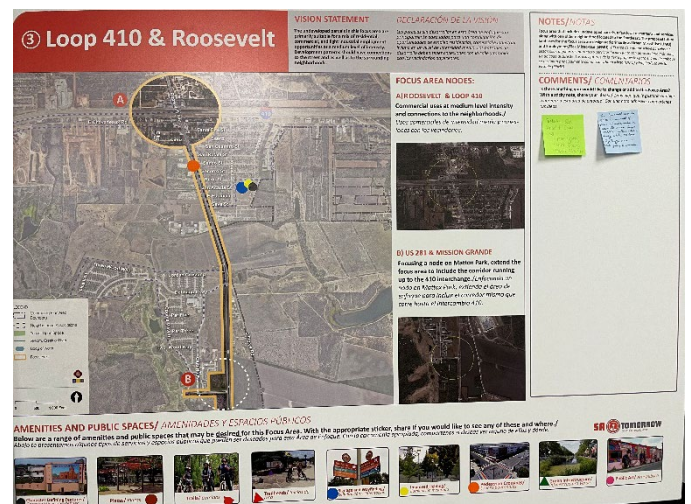
### Focus Area 3: Roosevelt & Loop 410

#### Public Comments:

- Roosevelt & 410 is in need of paving/sidewalks on concrete area

Large puddle after a rain, dusty when no rain - high traffic area (only going to worsen) – green infrastructure/water storm management

- Between San Rafael & Suya St:
  - more lighting
  - safer crosswalks
  - improve sidewalks





### Amenities and Public Spaces

In the fourth station and last activity attendees were asked to indicate what type of amenities and public spaces and where they would like to see within the South Community Area plan, or by leaving a post-it comment.

#### Public Comments:

- Add safe pedestrian crossings (Roosevelt & Riverside)
- Create crosswalks on Roosevelt between Southcross and VFW Blvd and between Mission Rd and VFW Blvd (la posada del rey apartments and mission library)
- Add pedestrian scale lights needed at neighborhoods S. Flores north of Military.
- Flooding issue (integrate green infrastructure) on Roosevelt between Mission Road and E Bonner Avenue/Napier Ave and Zerm, Sexaune dr, Padre Dr area
- Create sidewalks and safe crosswalks going to Walmart along Roosevelt
- Improve lighting around all the missions for security
- (Roosevelt) incorporate roadside vendors (character defining) into the future of the community. They are a landmark/staple in this area and part of the fabric of our community.
- More art around mission Espada
- Pedestrian scale lighting needed 281 & Socorro st
- Other Comments:
  - public park to include swings & foam floor children 1-5yo.
  - green infrastructure
  - improve Broadband access in the Southside

#### Main Takeaways:

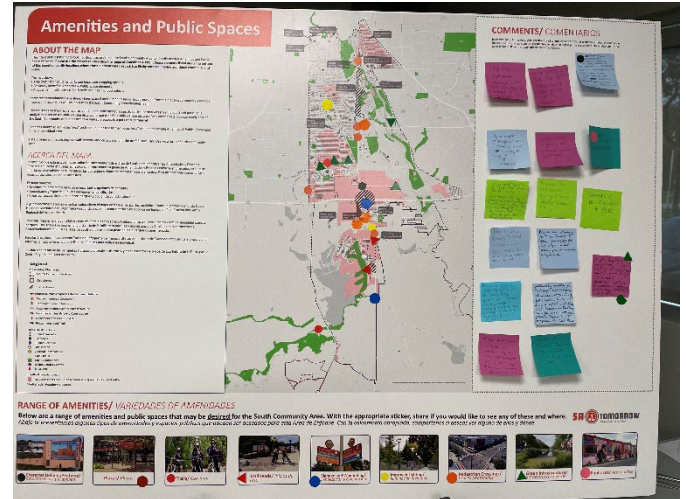
- Increase crosswalks and lighting
- Add **green infrastructure**
- Add **playgrounds in parks**
- Add **art**, improve **broadband access**

### Survey

A survey will be created for planning team members to share with the community, and posted to the sub area website, SA Speak Up and the Planning Department's social media. A link to access the survey is located here: <https://saspeakup.com/u4201#1>

### Next Steps

Staff will review feedback from the community meeting and the survey results (after the survey closes) to further refine the draft future land use map.



## South Community Area Community Meeting #2

This meeting summary, along with all previous meeting recordings and summaries can be on the sub area page's resource page: <https://south.sacompplan.com/documents/?active=community-meetings>

The fourth community open house is tentatively scheduled for October/November 2023.

**Project Manager:** Debora Gonzalez, City of San Antonio Planning Department.

**Email:** [Debora.Gonzalez2@sanantonio.gov](mailto:Debora.Gonzalez2@sanantonio.gov)

**Phone:** (210) 207-8085

