



South Community Area Planning Team

Meeting #8

Monday, June 26th, 2023

Stinson Municipal Airport

5:30 – 7:30 PM



Cambridge Systematics, Inc.
Bowtie
Economic & Planning Systems, Inc.
Auxiliary Marketing Services
Mosaic Planning and Development Services
SJPA

South Community Area Project Team



City of San Antonio, Planning Department

Debora Gonzalez, Project Manager

MIG



Jay Renkens, AICP, Principal

Marco Hinojosa, Senior Project Associate

Saul Vazquez, Senior Project Associate



Cambridge Systematics

Hannah Santiago, Senior Associate

Timeline of Meetings



Meeting Objectives

1. Mobility Recommendations

Build on Mobility discussions from PT #6 and CM #3 to assess draft mobility recommendations

2. Reintroduction to Amenities & Public Space Elements

Reintroduction of Amenities & Public Space Elements and introduction of draft Amenities & Public map

3. Overview of Digital Design Charrette Graphics

Review draft graphics created from the digital design charrette and provide input on the elements shown



Mission Reach Trail. Credit: Bonnie Arbittier / San Antonio Report

Draft Vision

The South Community Area helps multi-generational households, residents, and businesses thrive by respecting, celebrating, and **safely** connecting the area's rich history and authenticity, **community destinations** and **gathering places**, and **family friendly recreational amenities** with **clean and green infrastructure**.



Goals

Goal 1: Improve **comfort** and **safety** through **urban greening** and integration of **sustainable infrastructure**.

Goal 2: Promote **quality development** that is **compatible** with **existing neighborhoods** and includes additional housing and employment options for **existing** and **new residents**.

Goal 3: **Attract** and **grow clean industries** with **well-paying, quality** jobs for local residents.

Goal 4: Leverage **heritage tourism** and **ecotourism** to grow **existing** and **new small businesses**.

Goal 5: **Support** and **cultivate** retention and growth of **artists, makers** and the **creative class**.

Goal 6: **Increase access** to **healthy food, health care** and **recreational amenities** for all residents.

Goal 7: Utilize existing mobility routes to create **multi-modal connectivity** and transportation options from the South Community Area to major hubs in the City.

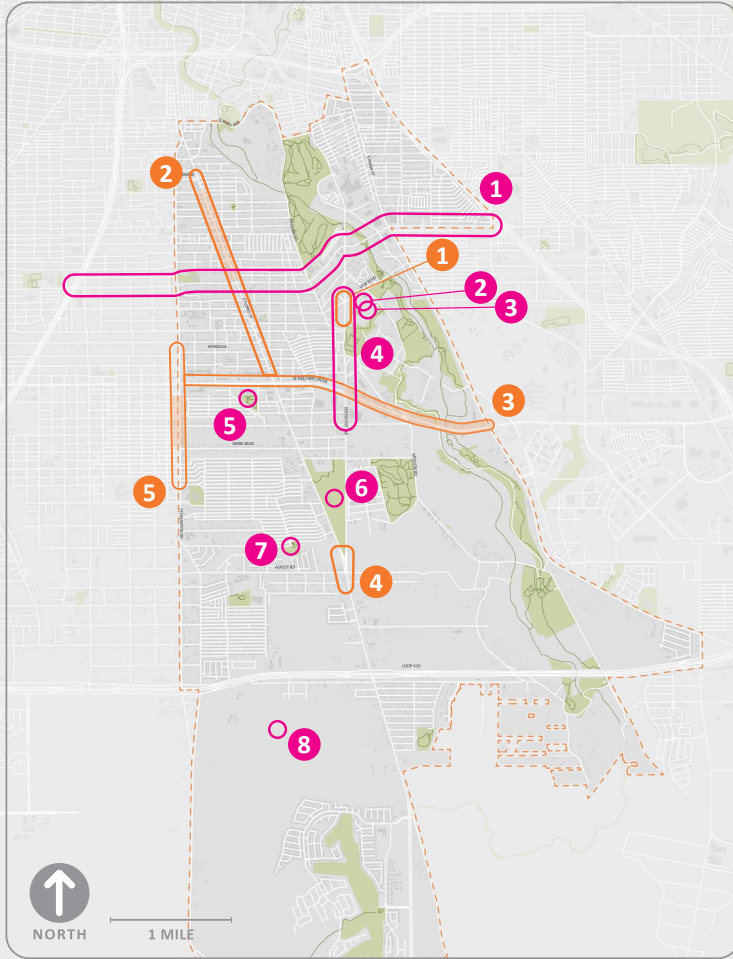
SA



TOMORROW

Draft Mobility Recommendations

Mobility Sites



IMPROVEMENTS AT VFW BLVD AND MISSION

Continued beyond the existing Bond project.

IMPROVEMENTS ON SW MILITARY DRIVE

Designated as Urban Mixed-Use and leads out of Mission Street and Pleasanton Road. The highlighted area on and Harlan avenues has a high concentration of businesses and a high concentration of vehicle safety incidents and a high concentration of vehicle safety incidents. The area is currently dangerous and confusing for car passengers and drivers.

IMPROVEMENTS ON PLEASANTON ROAD TO S PRESA STREET

Priority mixed-use corridor reflects its importance as a transit corridor through the area and builds upon the existing Area Regional Center Plan. Military Drive is a major corridor (3+3 center turn lane) and some portions have been converted from Roosevelt Avenue to Mission Road intersection cluster for Mission Road (both north and southbound) are currently dangerous and confusing for car passengers and drivers.

IMPROVEMENTS ON KENDALIA AVENUE TO E AMBER PLACE

VIA areas in D3 and the extent from Kendalia Avenue to E Amber Place are designated as various types of mixed-use on the draft map.

IMPROVEMENTS ON S FLORES STREET, ROOSEVELT AVENUE,

to Braubach St is an identified SPIA area, located close to the STEM Early College High School. The whole area along S Flores and Roosevelt Avenue is having sidewalk gaps and is a pedestrian crash area.

WEST CONNECTIONS BETWEEN PLEASANTON ROAD, AND ROOSEVELT

Feedback wanting better east-west connections near choice for prioritization identified in the community. We like to confirm if this is indeed a community choice of which roads people think have the best

2022 Bond Projects

- 1 **SOUTHCROSS BOULEVARD PHASE 2**
Construct pedestrian improvements to include sidewalks, curbs, driveway approaches, and other improvements as applicable and within available funding. This is a multi-phased project.
- 2 **WORLD HERITAGE CENTER PHASE 2 IMPROVEMENTS**
Develop the World Heritage Center located at the Mission Marquee Plaza to include enhancements to existing structures, expanded parking, comprehensive campus signage package, and construction of an outdoor open air pavilion. This is a multi-phased project.
- 3 **DISTRICT 3 AQUATICS FACILITY**
Develop and construct a new aquatic facility within available funding to include a swimming pool and associated amenities such as a splash pad.
- 4 **ROOSEVELT AVENUE (VFW BOULEVARD TO HARDING BOULEVARD)**
Construct roadway improvements to include sidewalks, curbs, driveway approaches, bicycle facilities, drainage, traffic improvements, and other improvements as applicable and within available funding. This is a multi-phased project.
- 5 **HARLANDALE PARK**
Construct general park improvements within available funding which may include playground shade enhancements, parking improvements, and pedestrian bridge enhancements.
- 6 **STINSON PARK (FIVE DIAMONDS LITTLE LEAGUE)**
Construct general park and rehabilitation improvements to the existing Sports Complex within available funding.
- 7 **DISTRICT 3 PARKS**
Construct general park and rehabilitation improvements of park facilities within available funding which may include restroom improvements as applicable. Parks may include: Bellaire Park and Highland Park.
- 8 **MITCHELL LAKE AUDUBON CENTER**
Construct facility improvements and rehabilitation of the birding center within available funding.
- * **DISTRICT 3 PEDESTRIAN MOBILITY**
Construct pedestrian mobility improvement projects as applicable and within available funding.

What We've Been Hearing

Mobility Recommendation #1

Prioritize
comfortable
and **safe**
mobility
for all.

Strategies

- Continue implementation of Vision Zero strategies (reduced & enforcing speed limits for neighborhood streets) for key areas of conflicts between people driving, people walking and people bicycling
- Decrease the number of stray animals on neighborhood streets
- Find opportunities to increase street lighting for pedestrian and bicycle safety

What We've Been Hearing

Mobility Recommendation #2

Increase
reliability of
neighborhood
access by
maintaining
infrastructure.

Strategies

- Ensure maintenance of existing sidewalks along multimodal corridors
- Focus resources to improve pavement condition of neighborhood streets
- Eliminate low water crossings & integrate green stormwater infrastructure to address drainage problems as roads are reconstructed



What We've Been Hearing

Mobility Recommendation #3

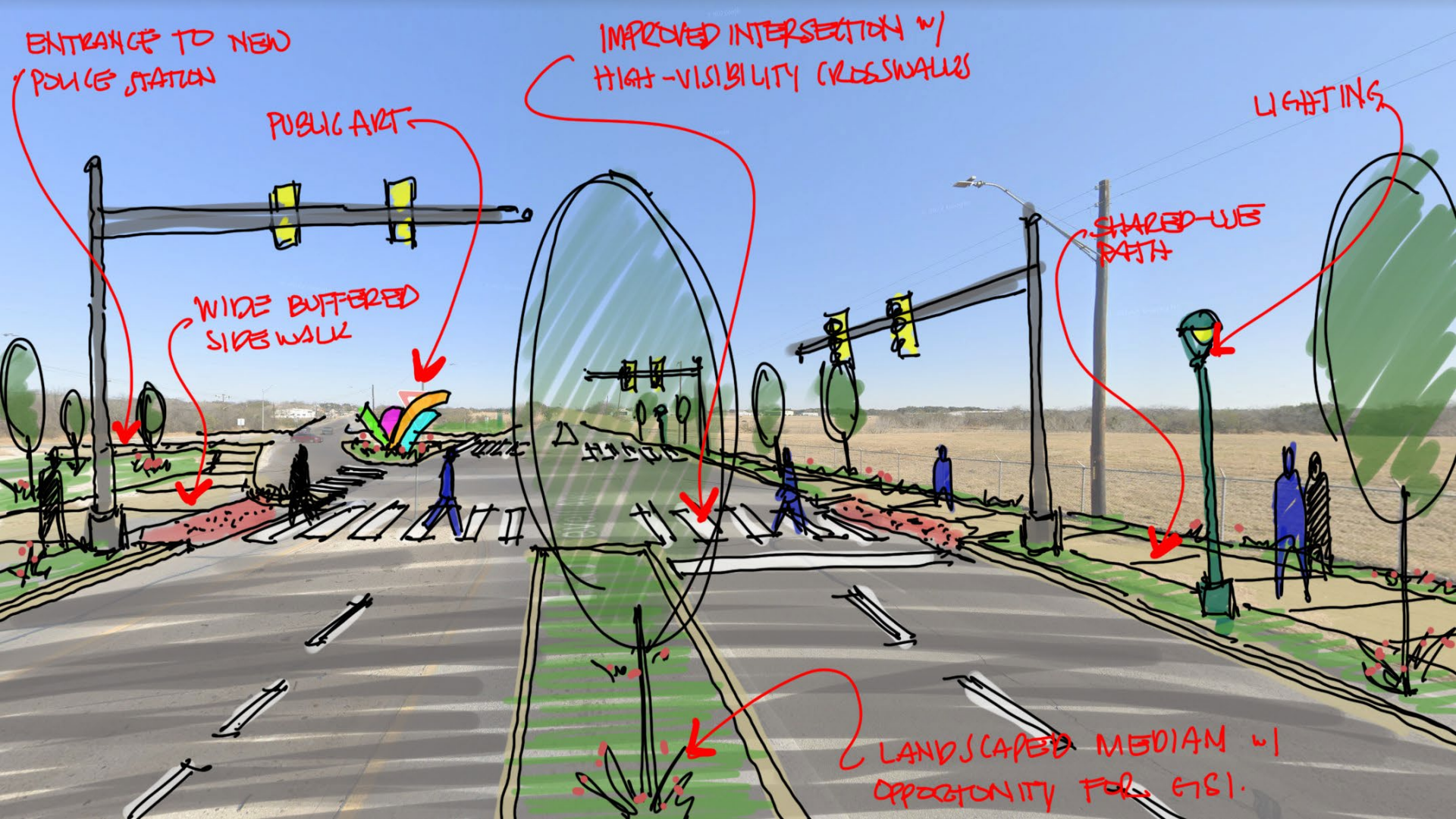
Create
connectivity
through **multi-**
modal
transportation
options.

Strategies

- Separate railroads from streets to improve safety and reduce delay
- Eliminate sidewalks gaps, especially near transit stops, schools and neighborhood centers of activity
- Provide contiguous protected bicycle infrastructure







ENTRANCE TO NEW
POLICE STATION

PUBLIC ART

WIDE BUFFERED
SIDEWALK

IMPROVED INTERSECTION w/
HIGH-VISIBILITY CROSSWALKS

LIGHTING

SHARED-USE
PATH

LANDSCAPED MEDIAN w/
OPPORTUNITY FOR GISI.



SA



TOMORROW

Amenities & Public Spaces
(Continued from PT#7)

What We've Been Hearing

Amenities & Public Space Themes

Trees along sidewalks to provide beautification, shade, urban heat island reduction, and improved air quality

Increase green space opportunities

Need for East-West trail connections & opportunities for rails to trails

Harlandale needs lighting as well as other parks in the area

Future Jaguar Parkway East connection to South Area

Future Jaguar Parkway East connection to South Area

Support Ecotourism & Historic Tourism

Opportunities to establish more community gardens & food coops

Hike & Bike connections – build off existing conditions & identify trail gaps

Type of Amenities & Public Spaces

- *PARKS* 
- *PLAZAS* 
- *TRAILS*  / *TRAILHEADS* 
- *SIGNAGE AND WAYFINDING* 
- *IMPROVED LIGHTING* 
- *PEDESTRIAN CROSSINGS* 
- *GREEN INFRASTRUCTURE* 
- *PUBLIC ART* 
- *PRIORITY CONNECTIONS* 
- *CHARACTER DEFINING FEATURES* 



South COMMUNITY AREA PLAN

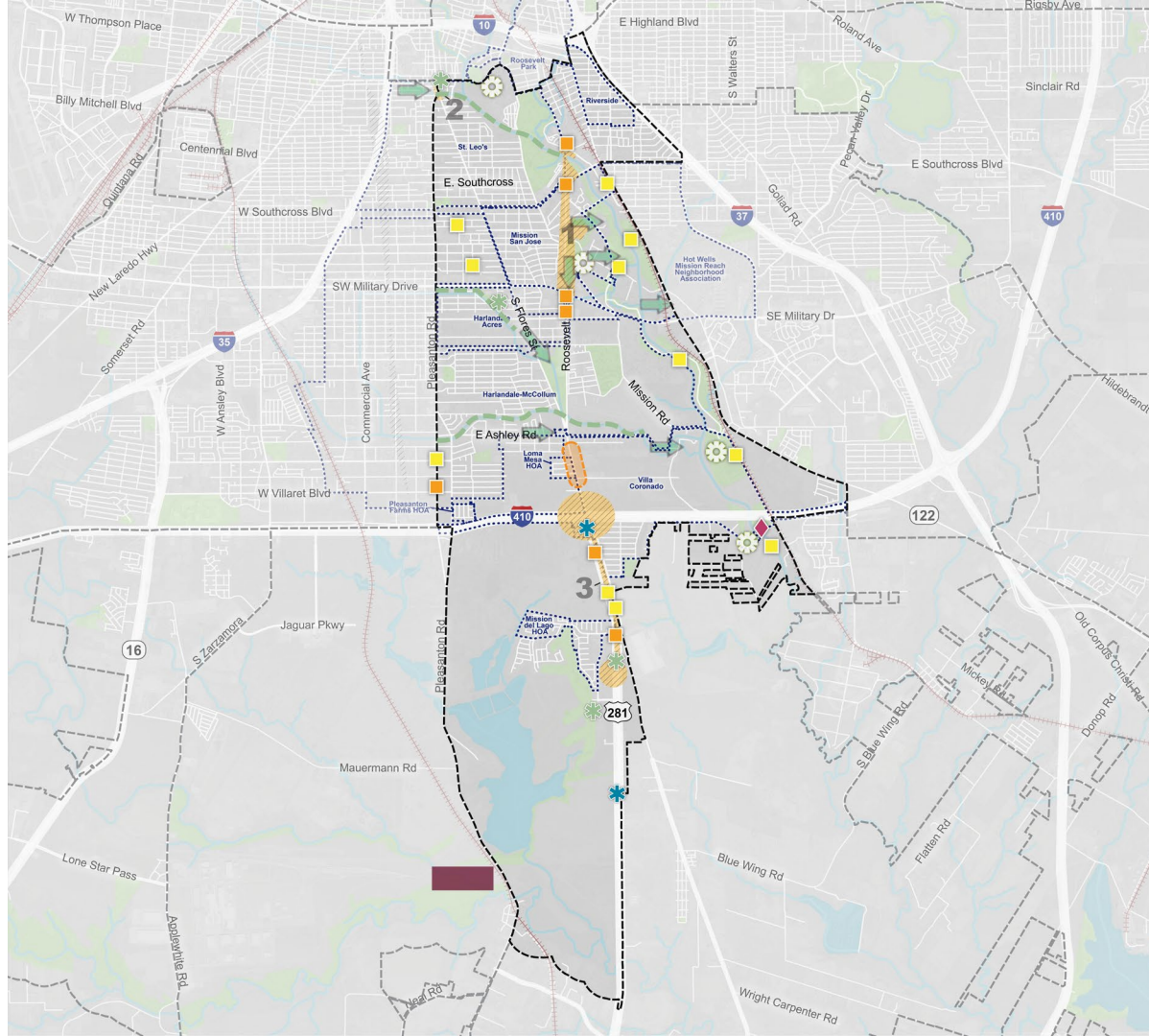
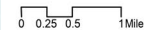
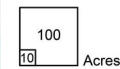
DRAFT
FOCUS AREAS

LEGEND

- Community Plan Area Boundary
- Adjacent Regional Center or Community Area
- Neighborhood Associations
- Missions
- Park or Open Space
- Stream, Creek or River
- Body of Water
- Focus Areas

PROPOSED ELEMENTS

- Trail
- Proposed Plaza
- Character-Defining Features
- Public Art
- Signage and Wayfinding
- Trailhead
- Improved Lighting
- Pedestrian Crossing
- Green Infrastructure

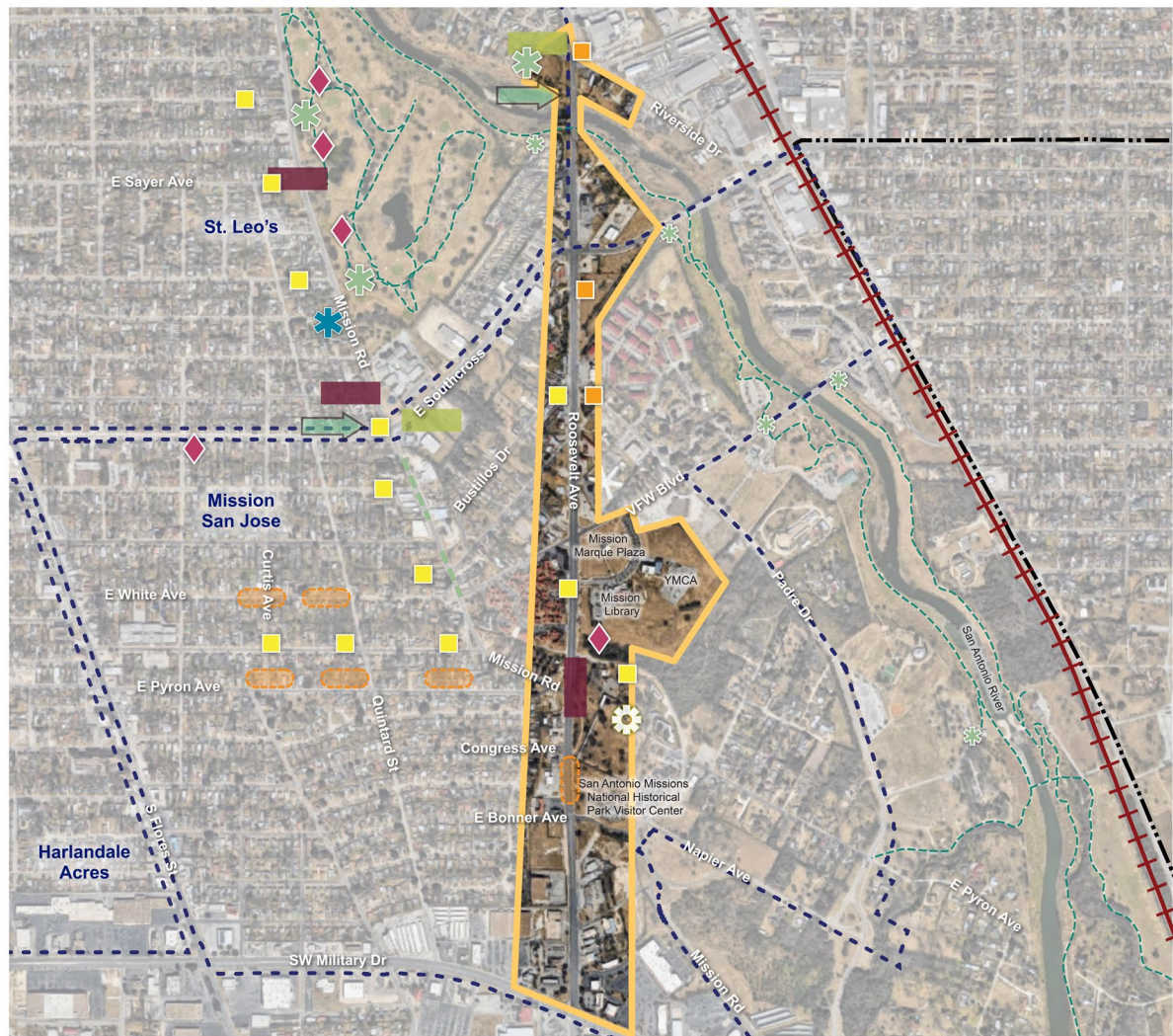


Draft Amenities & Public Space Recommendations

- **APS Recommendation #1:** Provide trees along sidewalks to beautify streets, provide shade, reduce the urban island effect, and improve air quality.
- **APS Recommendation #2:** Create east-west trail connections that intersect with existing north-south connections.
- **APS Recommendation #3:** Increase pedestrian scale lighting along main streets and public spaces to allow them to be utilized during all times of the day.
- **APS Recommendation #4:** Add community gardens and playgrounds at existing parks and open spaces.
- **APS Recommendation #5:** Integrate green stormwater elements and mitigate flooding.
- **APS Recommendation #6:** Create protected crosswalks on main streets to allow people to safely connect from neighborhoods to community destinations.

Draft Vision:

"Establish a neighborhood hub corridor with mixed uses allowing for community serving commercial uses and includes a diversity of housing options of medium-density residential uses and green space with onsite stormwater management infrastructure."

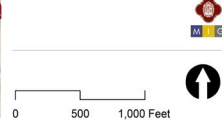


South COMMUNITY AREA PLAN

FOCUS AREA 1: ROOSEVELT CORRIDOR

- LEGEND
- Community Plan Area Boundary
 - Adjacent Regional Center or Community Area
 - Neighborhood Associations
 - Missions
 - Park or Open Space
 - Stream, Creek or River
 - Body of Water
 - Focus Area
 - Trail
 - Trailhead

- FOCUS AREA RECOMMENDATIONS
- Trail
 - Proposed Plaza
 - Proposed Park/Open Space
 - Character-Defining Features
 - Public Art
 - Signage and Wayfinding
 - Trailhead
 - Improved Lighting
 - Pedestrian Crossing
 - Green Infrastructure



Draft Vision:

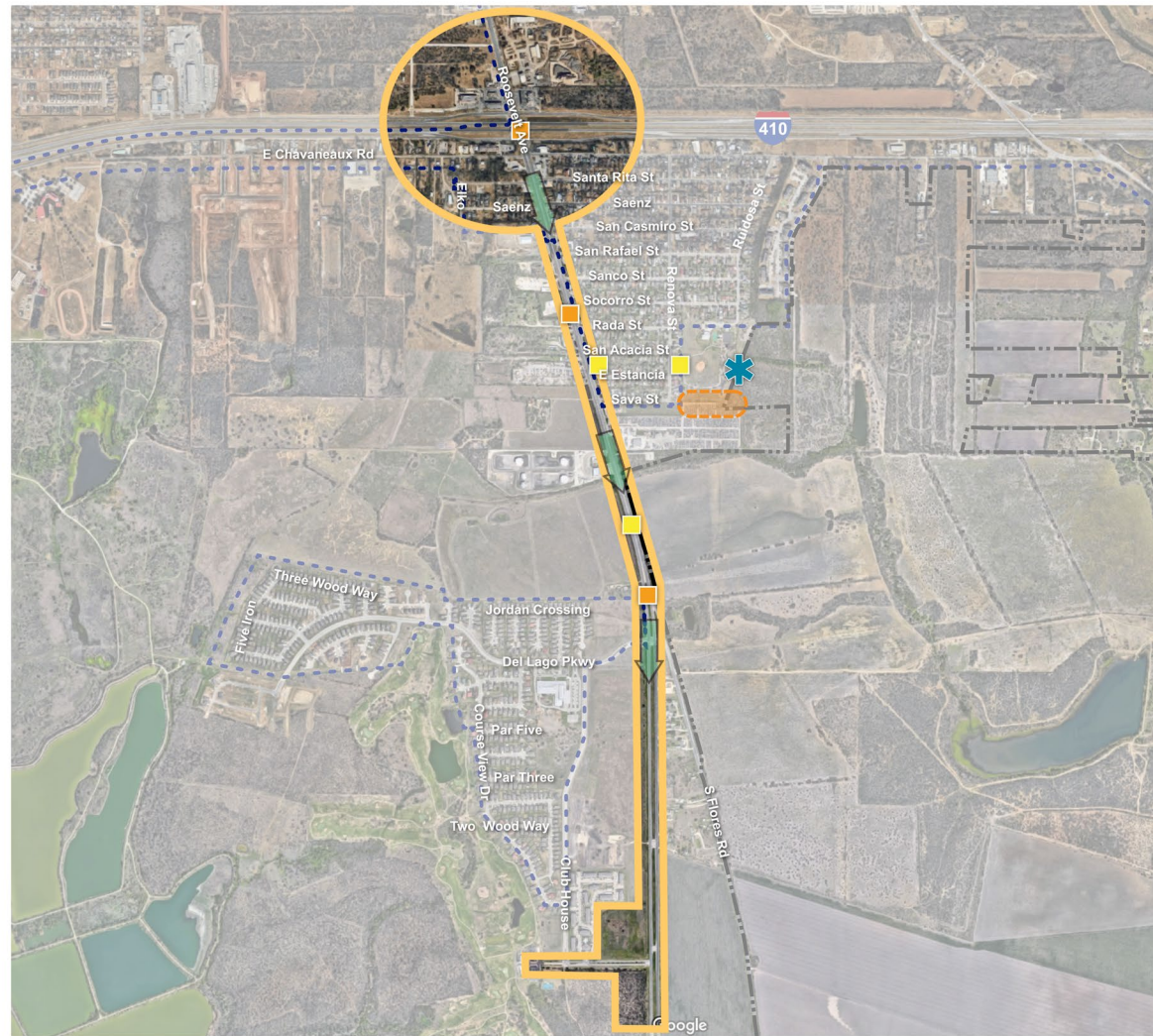
"The focus area is envisioned as a compact mixed-use node with retail, dining, office space, housing and public open space to serve the adjacent residential neighborhoods and local employees connecting to existing trail network."



- LEGEND
- Community Plan Area Boundary
 - Neighborhood Associations
 - Park or Open Space
 - Stream, Creek or River
 - Body of Water
 - Focus Area
- FOCUS AREA RECOMMENDATIONS
- Trail
 - Proposed Plaza
 - Public Art
 - Signage and Wayfinding
 - Trailhead
 - Improved Lighting
 - Pedestrian Crossing
 - Green Infrastructure

Draft Vision:

“Urban-Mixed use nodes primarily suitable for a mix of residential, commercial, and light industrial employment opportunities that is connected and includes safe pedestrian infrastructure and onsite stormwater management infrastructure at a medium level of intensity.”



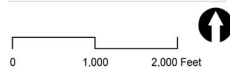
South COMMUNITY AREA PLAN FOCUS AREA 3: LOOP 410 & ROOSEVELT

LEGEND

- Community Plan Area Boundary
- Neighborhood Associations
- Park or Open Space
- Stream, Creek or River
- Body of Water
- Focus Area

FOCUS AREA RECOMMENDATIONS

- Character-Defining Features
- Signage and Wayfinding
- Improved Lighting
- Pedestrian Crossing
- Green Infrastructure





SA



TOMORROW

Digital Design Charrette Graphics
DRAFTS

SA TOMORROW

South Area

South Presa Southeast Military Road

DRAFT GRAPHICS

06/26/2023



SE Military Dr

Spresa St



SA TOMORROW SUB AREA PLANNING

WITH UNIVERSITY AND SOUTH HOUSTON DISTRICTS

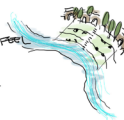
SOUTH PRESA & SE MILITARY (LOOK @ ANTIPODEAN SITE, SAME CONCEPT)

ITEMS TO CONSIDER

- REMAIN AREA TO HAVE SOME OPEN SPACE
- SE MILITARY IS RECREATIONAL SPEEDWAY
- CONSIDER TRAFFIC CALMING
- SEB AND ADDRESS IS LOCATED ADJACENT TO THIS SITE
- SITE IS MIN PRICE IMPROVEMENT OVERLAY
- NAMED BACKLASH (BUT DANCES, ENVIRONMENTAL) WAITED OFF?

POTENTIAL DEVELOPMENT


- ANTIPODEAN WITH ADJACENT PARK
- SEB STATION POSTER
- NAMED HERITAGE NATL PARK



CAROLAN
"I THINK WE!"

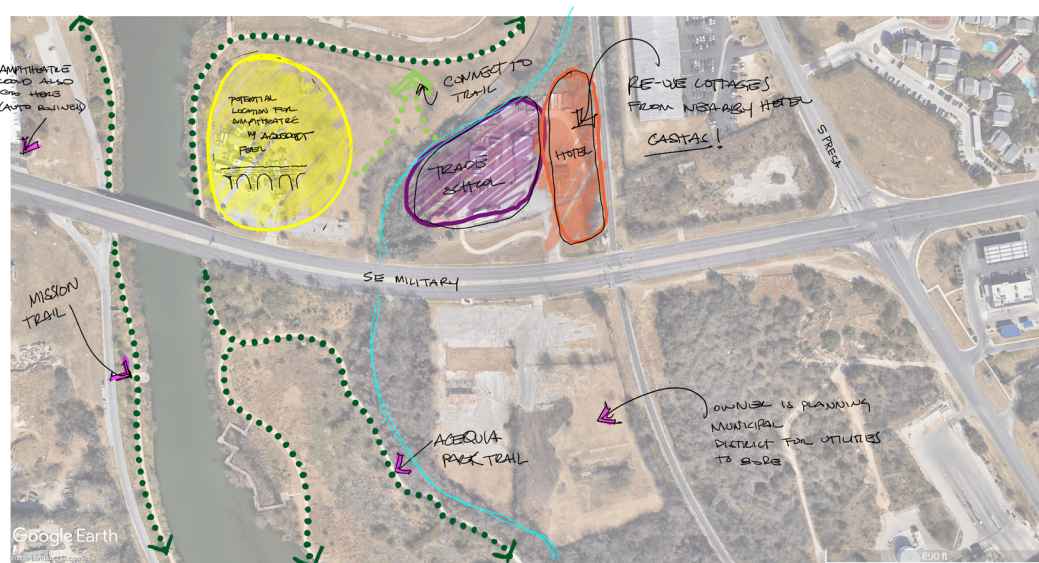
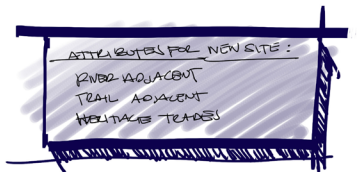
→ TRADE SCHOOL, BOTTING HOTEL COMPANY

MOBILITY

- TRAIL ALONG RAIL? OR TRAIL CONNECTIONS TO ANTIPODEAN
- CONNECTION TO MISSION & TRAIL THAT CAN BE USED DAILY LOCATED
- BIKES CENTRAL ALONG TRAIL - MISSION ASPECT 
- THINK ABOUT LOCATION OF PARKING

PROGRAMMING

- SHAWSPERL IN THE PARK
- LOU SCOTT & TRAPES
- LARSEN SCULPTURE GARDEN



- NO PARKING VOTS ALONG RIVER
- NEED FOR LIGHTING
- HISTORY OF IRONWORK IN SCULPTURE
- MAKE SURE TRACES AREN'T REDUNDANT
- VISIBILITY OF MISSIONS IS AN ISSUE



→ TRAVEL & TRAIL BUSES

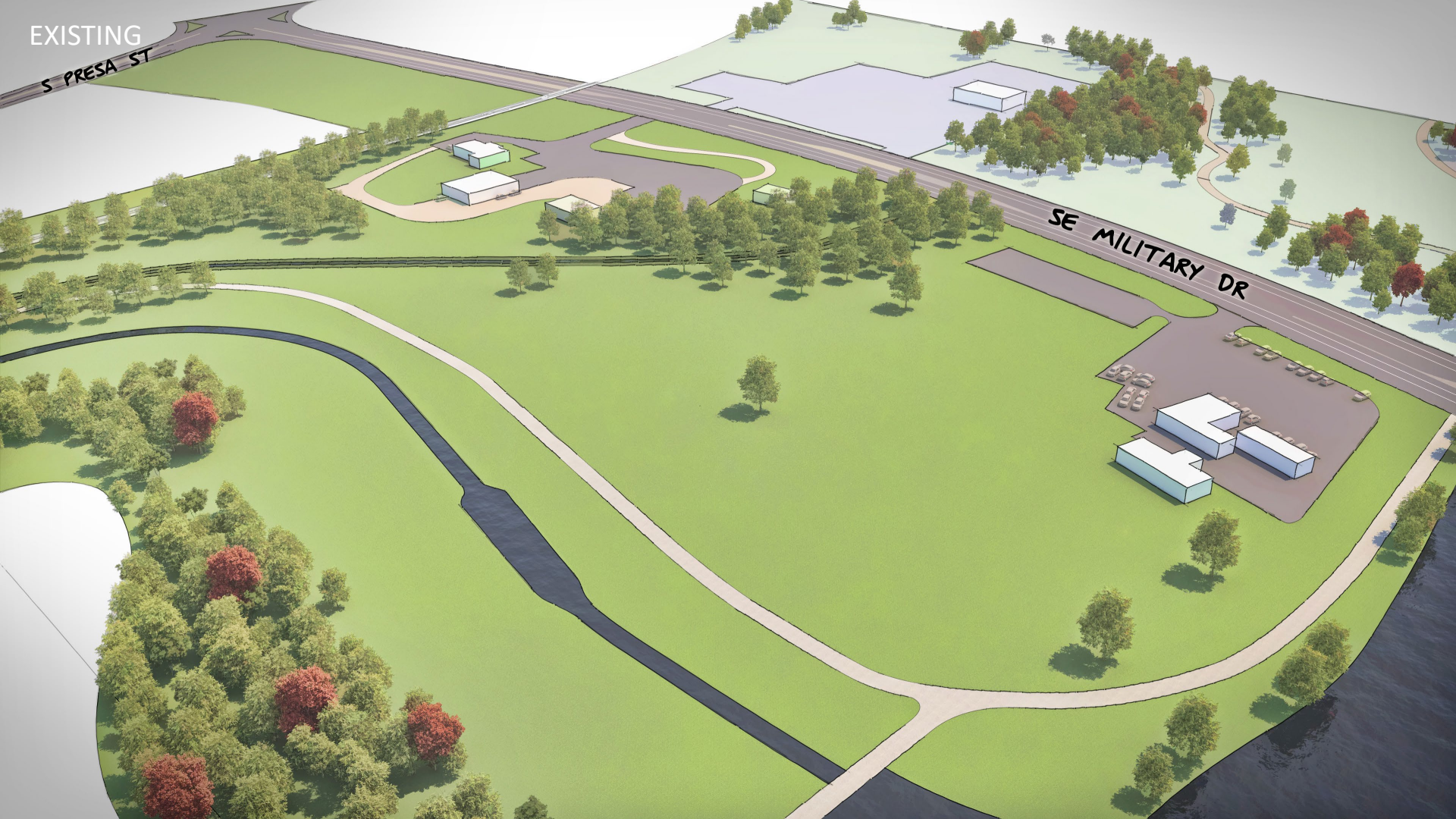


→ WOOD BETTER SIGNAGE FOR MISSIONS

EXISTING

S PRESA ST

SE MILITARY DR



PROPOSED
S PRESA ST



EXISTING



PROPOSED



EXISTING



PROPOSED



SA TOMORROW

South Area: Focus Area 2
Pleasanton and South Flores
DRAFT GRAPHICS
06/26/2023



Malone St

S Flores St

Mildred St

Toudouze St

Merrick St

Pleasanton Rd



TO CONSIDER (EXTRA CONDITION)

- TOWNSHIP ST IS CUT THROUGHT ST
- CLOSE TOWNSHIP ST + HAVE BUD USE IT



→ WIDER SIDEWALKS w/ TREES



- LIGHTING
- SIGNAGE
- PUBLIC AREA
- PRIVATE AREA



- BAS IGNITED w/ POLI OUT
OPELONING CANT STREET

- CREATE SPACE FOR MICROMOBILITY 

- ADDITION OF KPE SHAPED PARTING

- LOOK @ NEARBY MOBILITY HUB

- 

- INCORPORATE GREEN INFRASTRUCTURE

- IN PARKING LOT
- POTENTIAL CLOSURE
- TRAIL BUFFER

- o FIND WAY TO
FOR WEST AGREEMENT

- UNDERGROUND UTILITIES

MAINTENANCE

- HAVE IMPROVEMENTS BE RESPONSIVE TO MAINTENANCE

II FOOD FOREST

- IMPLEMENT TRUST TREE THAT REQ. LOW MAINTENANCE
- PARTNER W/ FOOD COUNSEL OR OTHER ORGS.



EXISTING



PROPOSED



EXISTING



PROPOSED



Next Steps

NEXT PLANNING TEAM MEETING(S):

- Planning Team Meeting #9 – August 1, 2023
- Planning Team Meeting #10 – September 7, 2023

QUESTIONS?

Debora Gonzalez,
City of San Antonio
Debora.Gonzalez2@sanantonio.gov
(210) 207-8085



South Community Area Planning Team

Meeting #8

Monday, June 26th, 2023

Stinson Municipal Airport

5:30 – 7:30 PM



Cambridge Systematics, Inc.
Bowtie
Economic & Planning Systems, Inc.
Auxiliary Marketing Services
Mosaic Planning and Development Services
SJPA