



Stone Oak Area Regional Center Planning Team

Meeting #1

Orientation / SWOT / Vision & Goals

March 11, 2022

Zoom

5:30-7:30



Cambridge Systematics, Inc.

Bowtie

Economic & Planning Systems, Inc.

Auxiliary Marketing Services

Mosaic Planning and Development Services

Worldwide Languages

Able City

WSP



The slide features a split background. The left side is orange with a faint city skyline. The right side is dark grey with a large, stylized graphic of the CN Tower and a curved arrow pointing upwards. The title 'SA TOMORROW' is in large white letters, with 'SA' inside a circular icon containing a stylized tower and arrow. Below it, 'Introductions' is written in a smaller white font.

SA TOMORROW

Introductions

Stone Oak Area Regional Center Project Team

- Channary Gould, Project Manager
City of San Antonio, Planning Department
- Jay Renkens, Principal
- Andy Rutz, Project Director
- Krystin Ramirez, Project Manager



Area Planning Consultant Team

Project Lead: Moore Iacofano Goltsman, Inc.



Sub-consultants:

- Economic & Planning Systems, Inc.
- MOSAIC Planning & Development Services
- Cambridge Systematics, Inc.
- Auxiliary Marketing Services
- BowTie
- WSP
- Able City



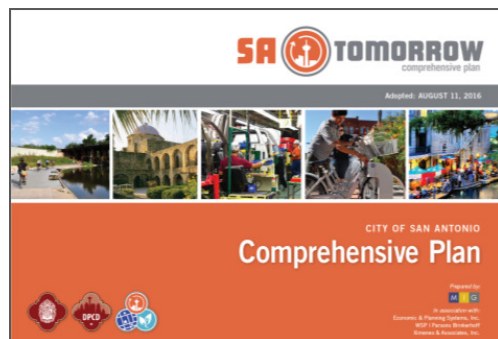
Meeting Objectives

- Overview of SA Tomorrow Intent
- Review Process & Schedule
- Discuss Planning Team Roles & Responsibilities
- Overview of Existing Conditions
- Introduction and Discussion on Equity
- Identify Vision & Goals for Plan



SA Tomorrow Background

The Challenge: Expected Growth



Vision & Guiding Principles for 2040

SA Tomorrow is the story of a great American city.

San Antonio is a **dynamic city with neighborhoods** that are complete **with unique places** that define **their character** and **celebrate our history**. Our corridors **unite our residents** and our businesses, using **cutting-edge multi-modal options** that **connect our neighborhoods** to **vibrant regional destinations...**

Maintain the character and integrity of existing San Antonio neighborhoods, parks, open space and trails by focusing growth in mixed-use regional centers and along attractive multimodal corridors with high performing transit service.

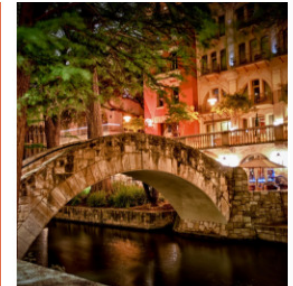
Ensure that all residents living in existing and new neighborhoods have safe and convenient access to jobs, housing, and a variety of amenities and basic services including great parks, strong schools, convenient shopping and nearby regional centers.



Connect safe and stable mixed-income neighborhoods with a system of walkable and bikeable streets, trails and pathways that celebrate and link natural greenways and drainage ways.

Ensure an inclusive San Antonio by providing affordable housing and transportation choices throughout the city.

Encourage a variety of amenity-rich places throughout the city with a balance of live, work and play opportunities.



Conserve, protect and manage San Antonio's natural, cultural and historic resources and open space.

Encourage and integrate innovative and sustainable ideas and development.

Provide an ongoing planning framework for more detailed and timely planning and design of regional centers, corridors and neighborhoods with continued opportunities for participation and partnerships, prioritization, and performance measurement.

Provide the residents of San Antonio, including youth, seniors, and disabled populations, with enhanced levels of authentic engagement.

SA Tomorrow Plan Elements

Growth & City Form

Transportation & Connectivity

Housing

Jobs & Economic Competitiveness

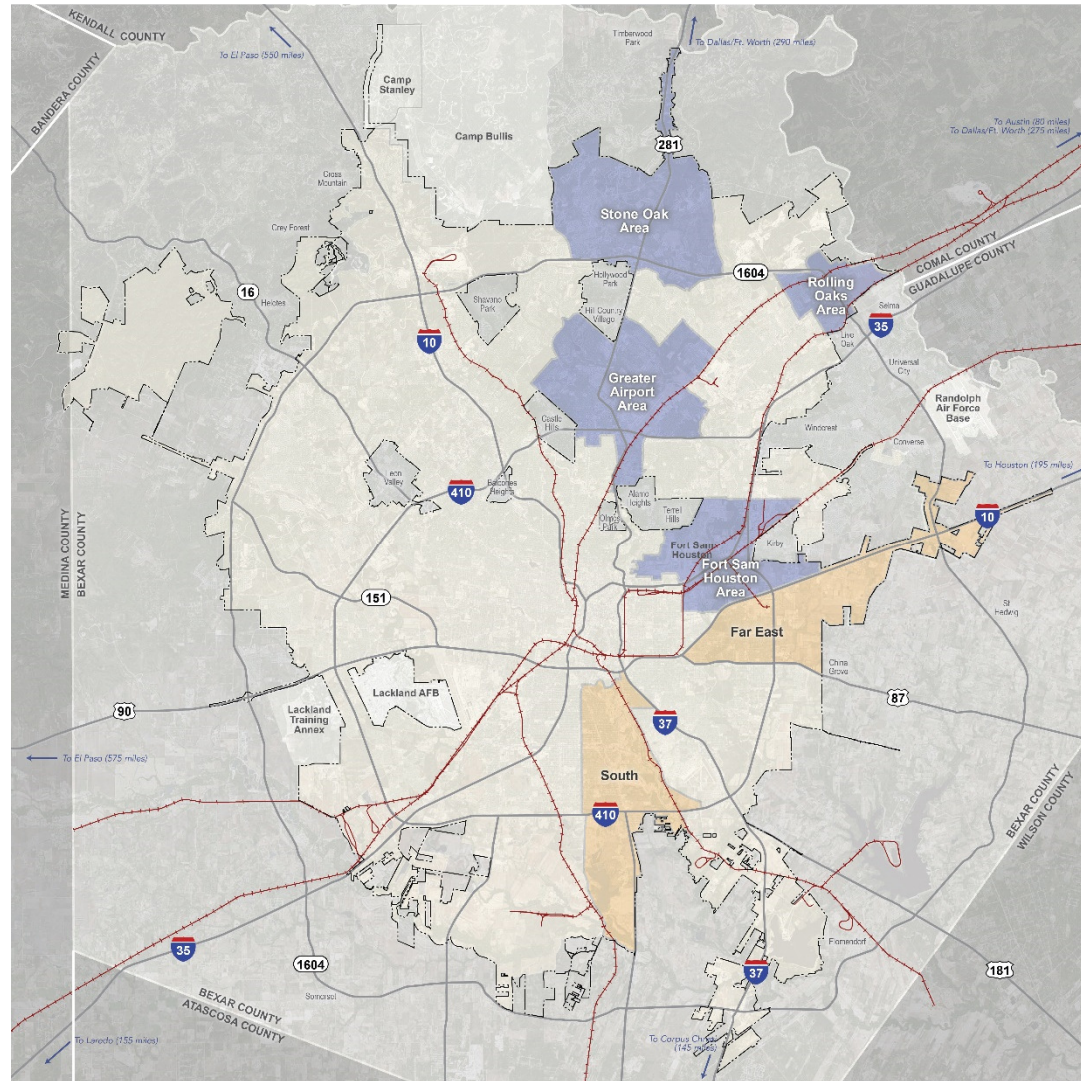
Community Health & Wellness

Natural Resources

Historic Preservation

Military

Public Facilities & Community Safety



SA Area Planning Phases
TOMORROW

- LEGEND**
- City Boundary
 - Major highway
 - Rail Line
 - Regional Center Plan Areas
 - Phase 1
 - Phase 2
 - Phase 3
 - Community Plan Areas
 - Phase 1
 - Phase 2
 - Phase 3
 - Phase 4
 - Phase 5



Schedule & Planning Team Responsibilities

Sub-Area Planning Project Phases

1

Analysis & Visioning

Existing conditions; existing plans review; vision and goals; focus areas and corridors; Community Meeting #1

2

Plan Framework

Develop plan elements; focus areas and key corridors; transformative projects; Community Meeting #2 and #3

3

Recommendations & Implementation

Action and phasing strategies; draft Plan elements; Community Meeting #4

4

Documentation & Adoption

Public Hearings, adoption, final summary and ePlan

Why You're Here

- Key role in your community
- Unique and diverse perspectives
- Representative for geographic area and/or organizations within the Project Area
- Common goal: make your area the best place to **live, work and play!**



Roles and Responsibilities

- **Support the implementation** of the SA Tomorrow Comprehensive Plan
- **Provide advice and guidance** on the planning process
- **Provide input and feedback** on draft products
- **Serve as an ambassador** for the SA Tomorrow Sub-Area project
- **Summarize input** and feedback from others, for the Planning Team
- **Contribute to at least one formal outreach event**
- **Distribute** information through your community/organization

Rules of Decorum

- Meetings **begin and end at announced times**
- **Unanticipated alternative topics** typically wait for the next meeting
- **Open for public attendance** but designed as a work session
- Basic **Principles**:
 - Presence
 - Mutual respect
 - Empathy
 - Learning
- **Communicate** any ideas and concerns first **with your Project Manager**

Time Commitment

- Total of approximately 11 Planning Team Meetings
- Meetings every four to six weeks on average
- Typically 1.5- to 2-hour meetings
- Meeting location always in your Sub-Area
- We will schedule meetings as far in advance as possible
- We will send meeting materials as far in advance as possible

Overall Sequence of Planning Team Meetings

- **Meeting #1:** Orientation; Sub-Area Plan Overview; SWOT; Vision and Goals
- **Meeting #2:** Confirm Vision & Goals; Land Utilization Analysis; Intro to Land Use (Focus Area ID)
- **Meeting #3:** Land Use (Housing & Economic Development Lens) (1 of 2)
- **Meeting #4:** Housing and Economic Development (Based on Land Use) (1 of 2)
- **Meeting #5:** Land Use (2 of 2), Housing and Economic Development (2 of 2)
- **Meeting #6:** Mobility (1 of 2)
- **Meeting #7:** Mobility, Focus Areas, Amenities & Public Space (1 of 2)
- **Digital Design Charrettes (DDCs)**
- **Meeting #8:** Review Digital Design Charrette; Neighborhood Profiles & Priorities; Amenities & Public Space (2 of 2)
- **Meeting #9:** Review of Maps; Plan Framework (1 of 2)
- **Meeting #10:** Plan Framework (2 of 2), Implementation Review
- **Meeting #11:** Public Draft Review & Final Revisions, Process Feedback

The graphic features a split background. The left side is orange with a faint city skyline. The right side is dark grey with a large, faint circular arrow and a silhouette of the CN Tower. The text 'SA TOMORROW' is in large white letters, with 'Q & A' below it. A circular logo with a red border and a white center containing a stylized tower and arrow is positioned between 'SA' and 'TOMORROW'.

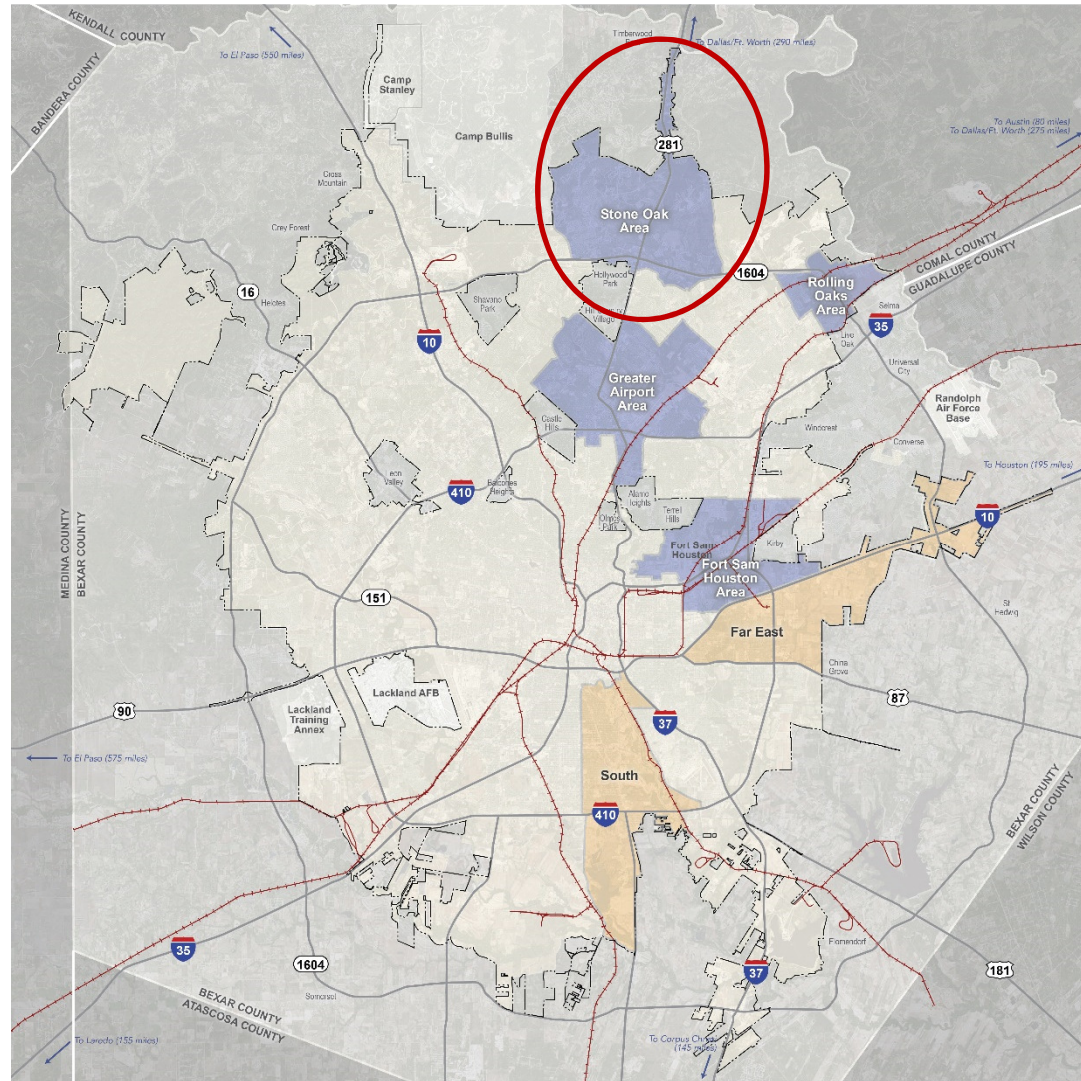
SA TOMORROW

Q & A



SA TOMORROW

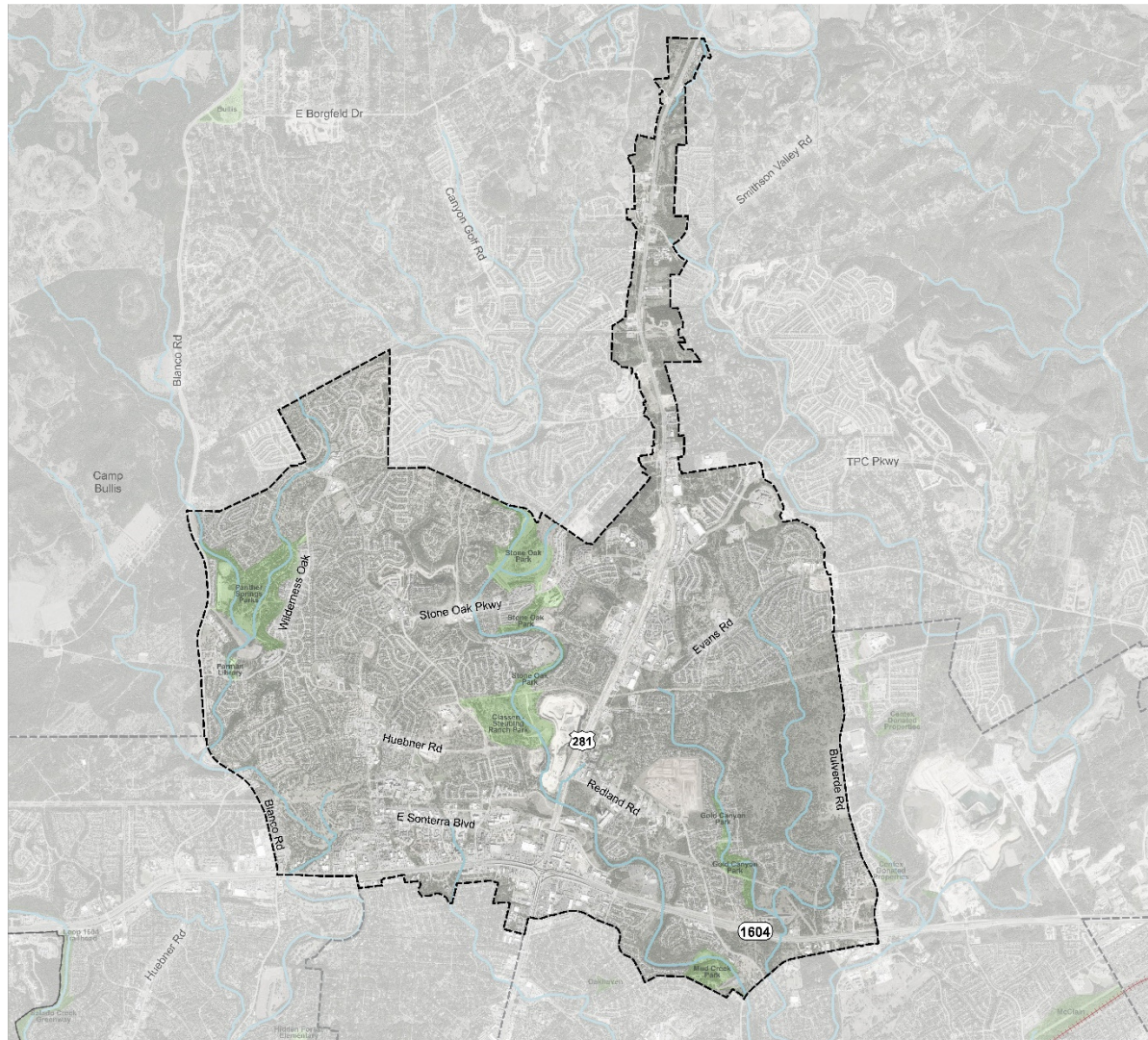
Existing Conditions



SA Area **TOMORROW** Planning Phases

- LEGEND**
- City Boundary
 - Major highway
 - Rail Line
 - Regional Center Plan Areas
 - Phase 1
 - Phase 2
 - Phase 3
 - Community Plan Areas
 - Phase 1
 - Phase 2
 - Phase 3
 - Phase 4
 - Phase 5

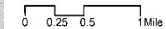
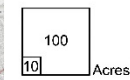




Stone Oak Area REGIONAL CENTER

STUDY AREA

- Stone Oak Area Regional Center Boundary
- Adjacent Regional Center or Community Area
- Public or Private Park or Open Space
- River or Stream
- Railroad Line



Existing Conditions Atlas

- Analysis and Overview of:
 - Existing Demographics
 - Existing Land Uses
 - Existing Transportation and Mobility
 - Civic Amenities
 - Parks and Open Space
 - Natural Systems
 - Equity
 - Access to Healthy Food
 - Access to Parks and Recreation
 - Access to Employment



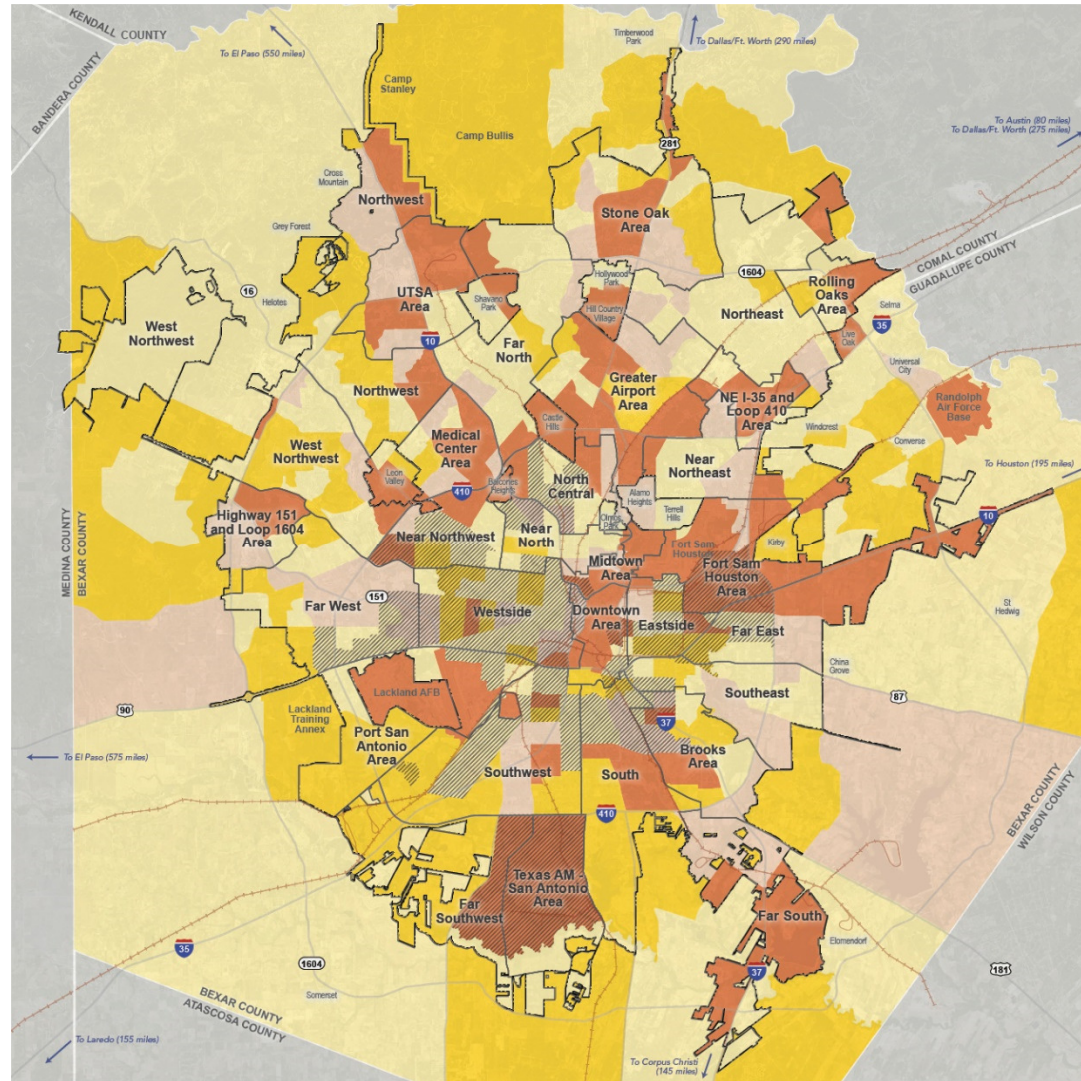
The graphic features a split background. The left side is orange with a faint city skyline. The right side is dark grey with a large, faint circular arrow and a silhouette of the CN Tower. A circular logo with a red border and a white arrow is positioned between the two sections.

SA TOMORROW

Introduction to Equity

What is Equity?





- LEGEND**
- City Boundary
 - Planning Sub-Area Boundary
 - Major Highway
 - Rail Line
- Employment Access**
- More than 2 Jobs for every 1 Household (>2:1)
 - Between 2 Jobs for every 1 Household and 1 Job for every 1 Household (2:1-1:1)
 - Between 1 Job for every 1 Household and 1 Job for every 2 Households (1:1-1:2)
 - Less than 1 Job for every 2 Households (<1:2)
 - * Lowest 20% Median Household Income and People Of Color
- * Received scores of 9-10 on the San Antonio Equity Matrix + Demographic Indicator Maps. Indicates the median household income is between \$11,360 - \$42,594 and the percent of people of color is between 83.59% - 99.71%.





SA TOMORROW

Discussion: Vision & Goals

The graphic features a split background. The left side is orange with a faint city skyline. The right side is dark grey with a large, faint circular arrow and a silhouette of the CN Tower. The title 'SA TOMORROW' is in large white letters, with 'SA' inside a red circular icon containing a white tower and arrow. Below it, 'Next Steps' is in smaller white text.

SA TOMORROW

Next Steps

Next Steps

- Where can we meet and what time of day?
- Next Planning Team Meeting(s):
 - Meeting #2: Week of June 27th
 - Meeting #3: Week of August 1st

- Questions?

Channary Gould, City of San Antonio
channary.gould2@sanantonio.gov
(210) 207-5446





Stone Oak Area Regional Center Planning Team

Meeting #1

Orientation / SWOT / Vision & Goals

March 11, 2022

Zoom

5:30-7:30



Cambridge Systematics, Inc.

Bowtie

Economic & Planning Systems, Inc.

Auxiliary Marketing Services

Mosaic Planning and Development Services

Worldwide Languages

Able City

WSP