

MOBILITY

INSTRUCTIONS

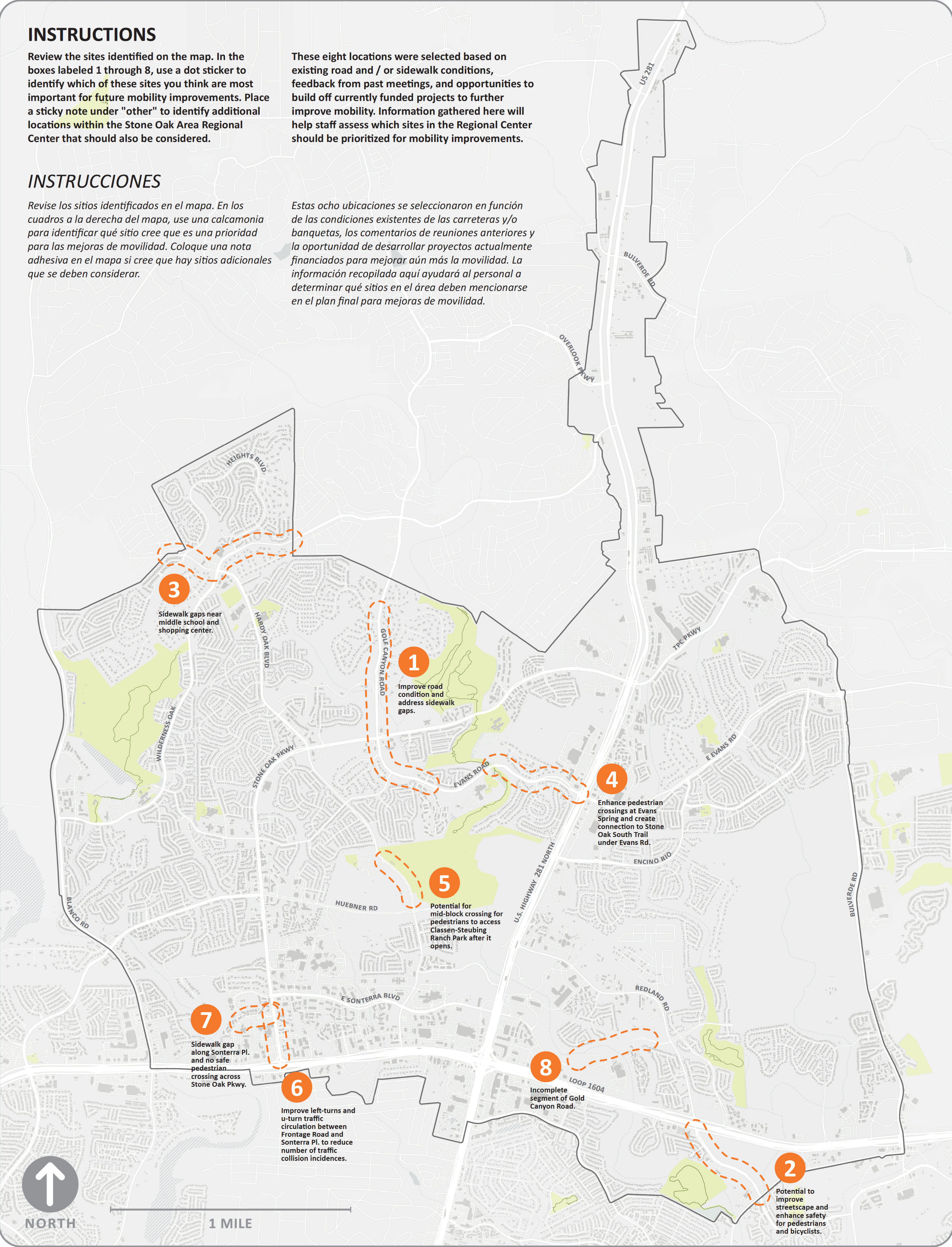
Review the sites identified on the map. In the boxes labeled 1 through 8, use a dot sticker to identify which of these sites you think are most important for future mobility improvements. Place a sticky note under "other" to identify additional locations within the Stone Oak Area Regional Center that should also be considered.

These eight locations were selected based on existing road and / or sidewalk conditions, feedback from past meetings, and opportunities to build off currently funded projects to further improve mobility. Information gathered here will help staff assess which sites in the Regional Center should be prioritized for mobility improvements.

INSTRUCCIONES

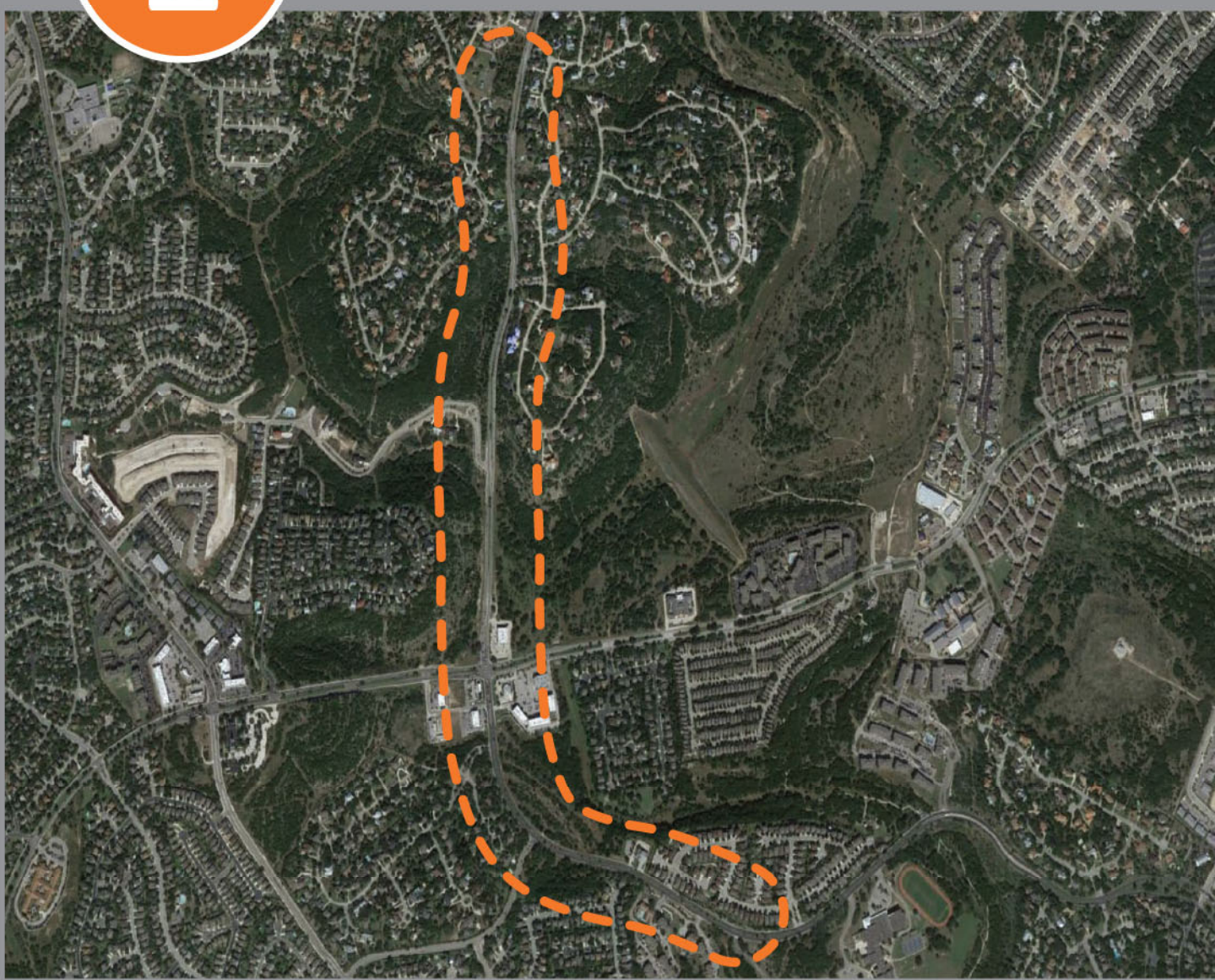
Revise los sitios identificados en el mapa. En los cuadros a la derecha del mapa, use una calcomanía para identificar qué sitio cree que es una prioridad para las mejoras de movilidad. Coloque una nota adhesiva en el mapa si cree que hay sitios adicionales que se deben considerar.

Estas ocho ubicaciones se seleccionaron en función de las condiciones existentes de las carreteras y/o banquetas, los comentarios de reuniones anteriores y la oportunidad de desarrollar proyectos actualmente financiados para mejorar aún más la movilidad. La información recopilada aquí ayudará al personal a determinar qué sitios en el área deben mencionarse en el plan final para mejoras de movilidad.



1

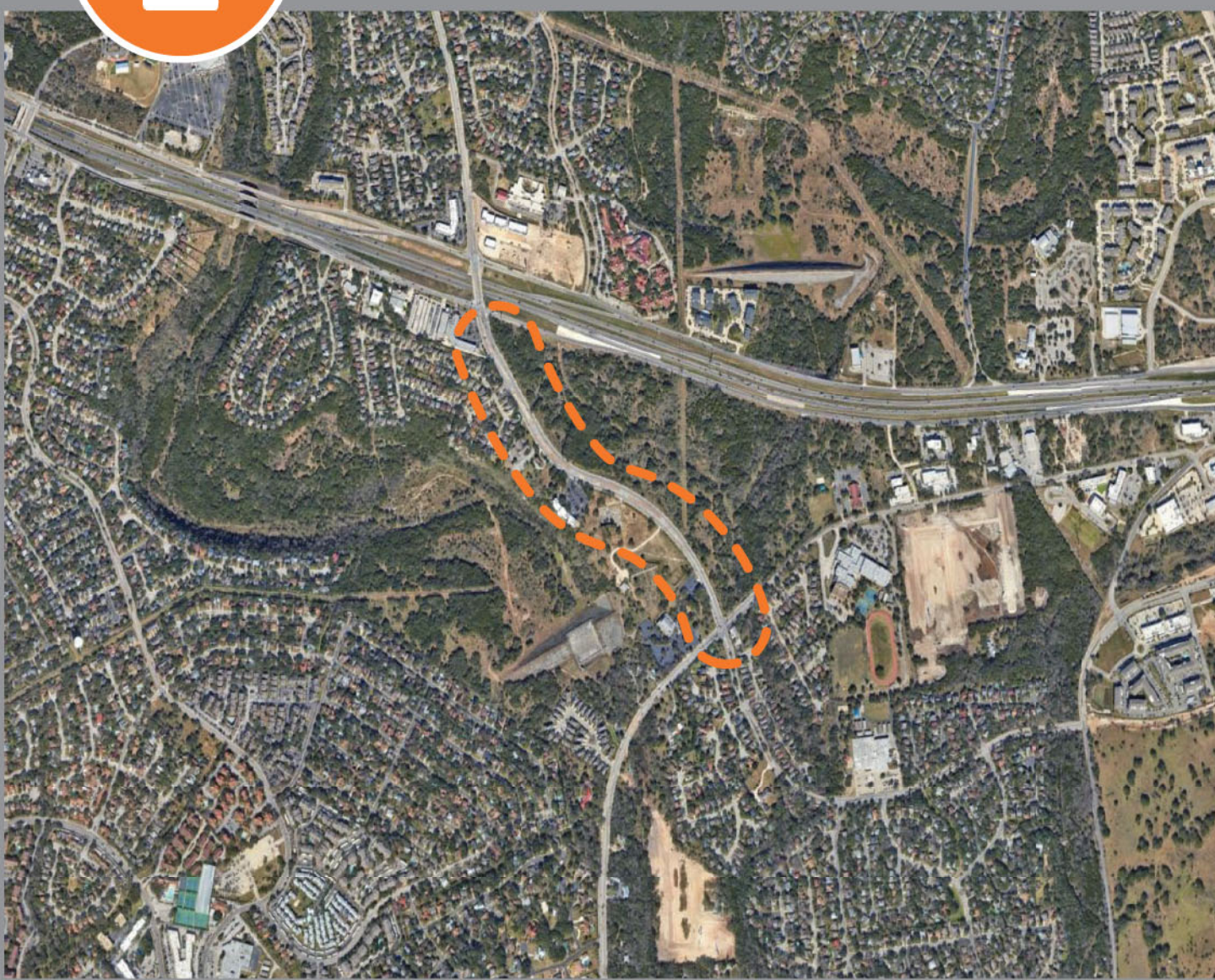
GOLF CANYON ROAD / EVANS ROAD



Place a dot to show you think this site needs to be a priority for Mobility

2

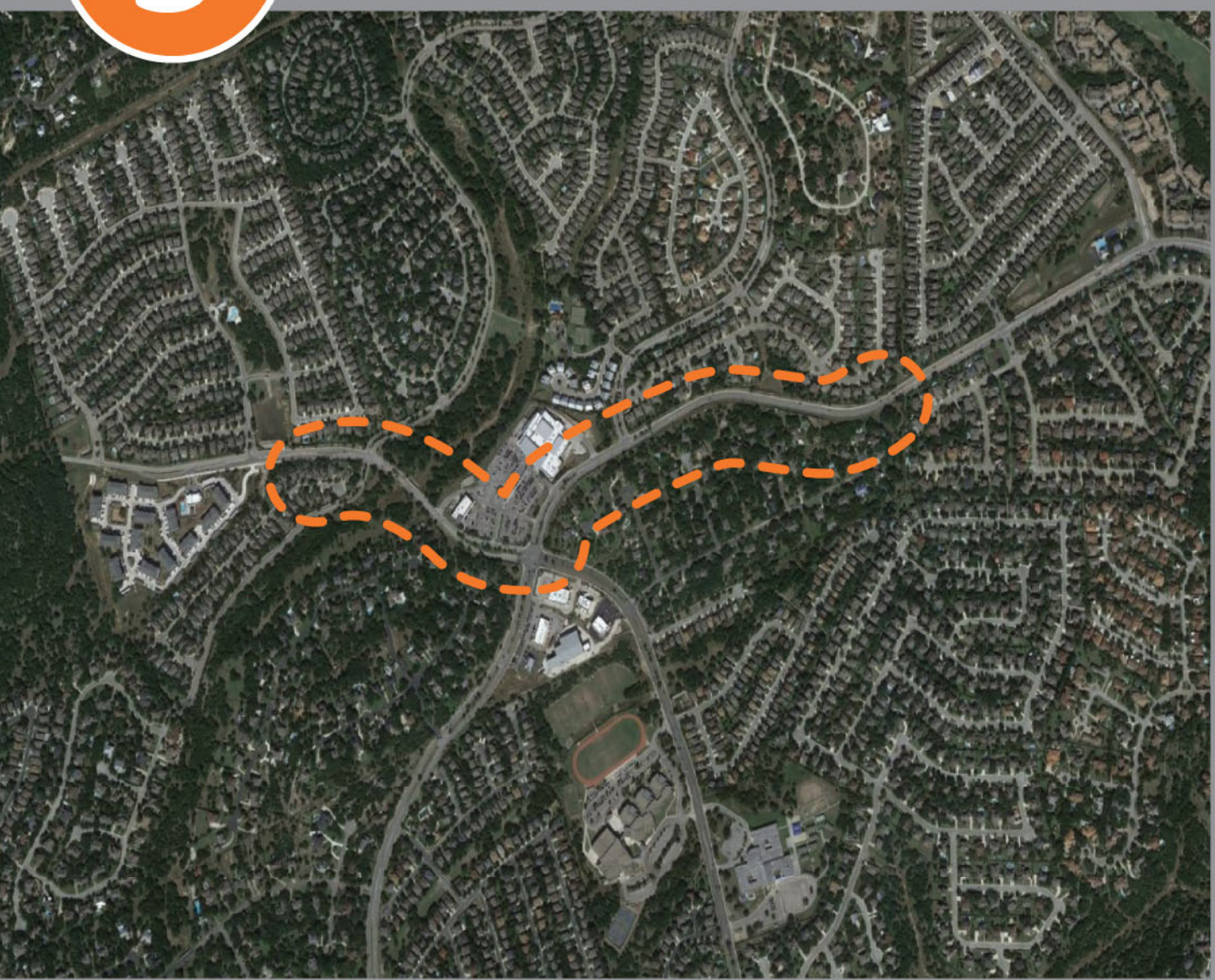
REDLAND ROAD



Place a dot to show you think this site needs to be a priority for Mobility

3

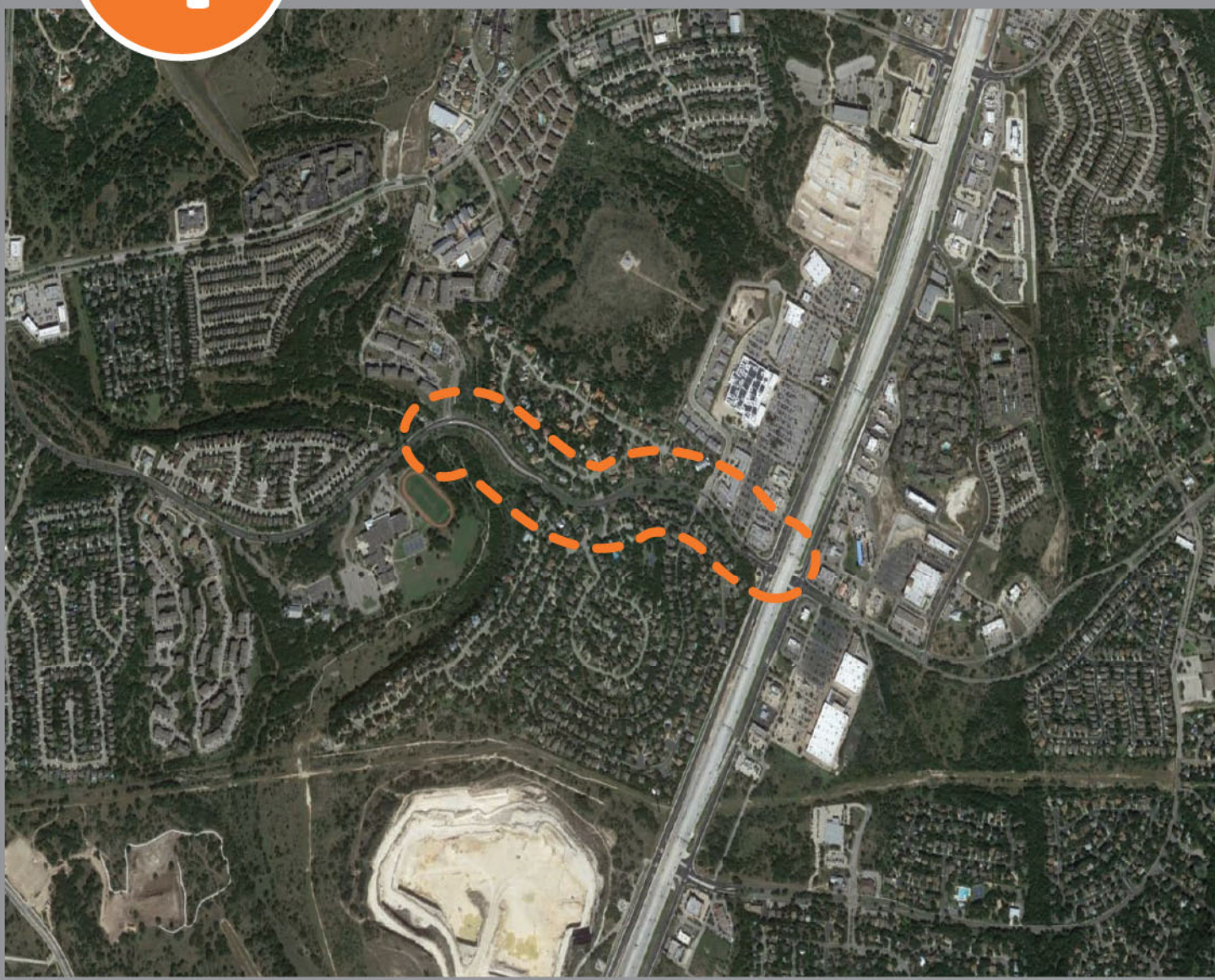
HARDY OAK BLVD & WILDERNESS OAK



Place a dot to show you think this site needs to be a priority for Mobility

4

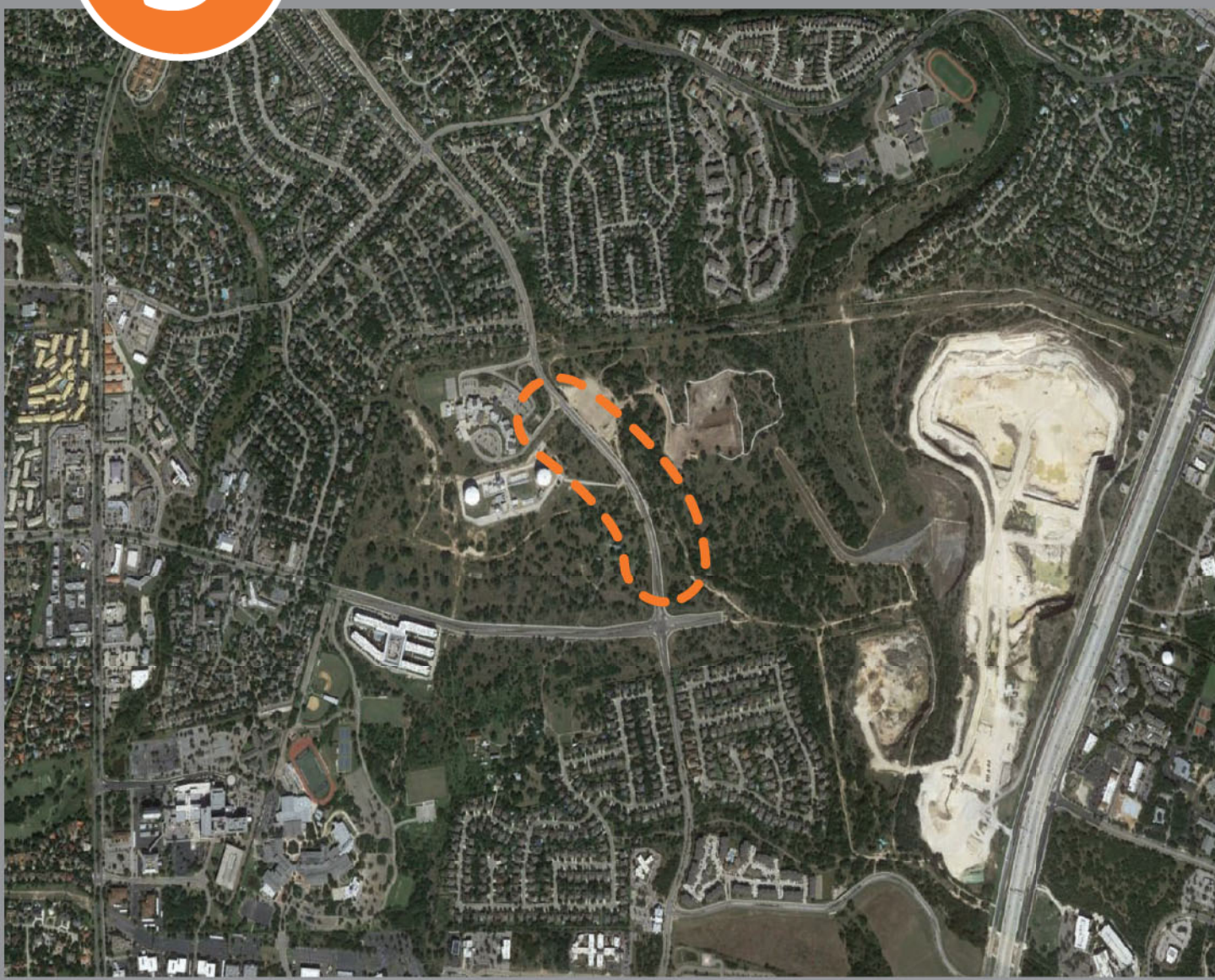
EVANS ROAD



Place a dot to show you think this site needs to be a priority for Mobility

5

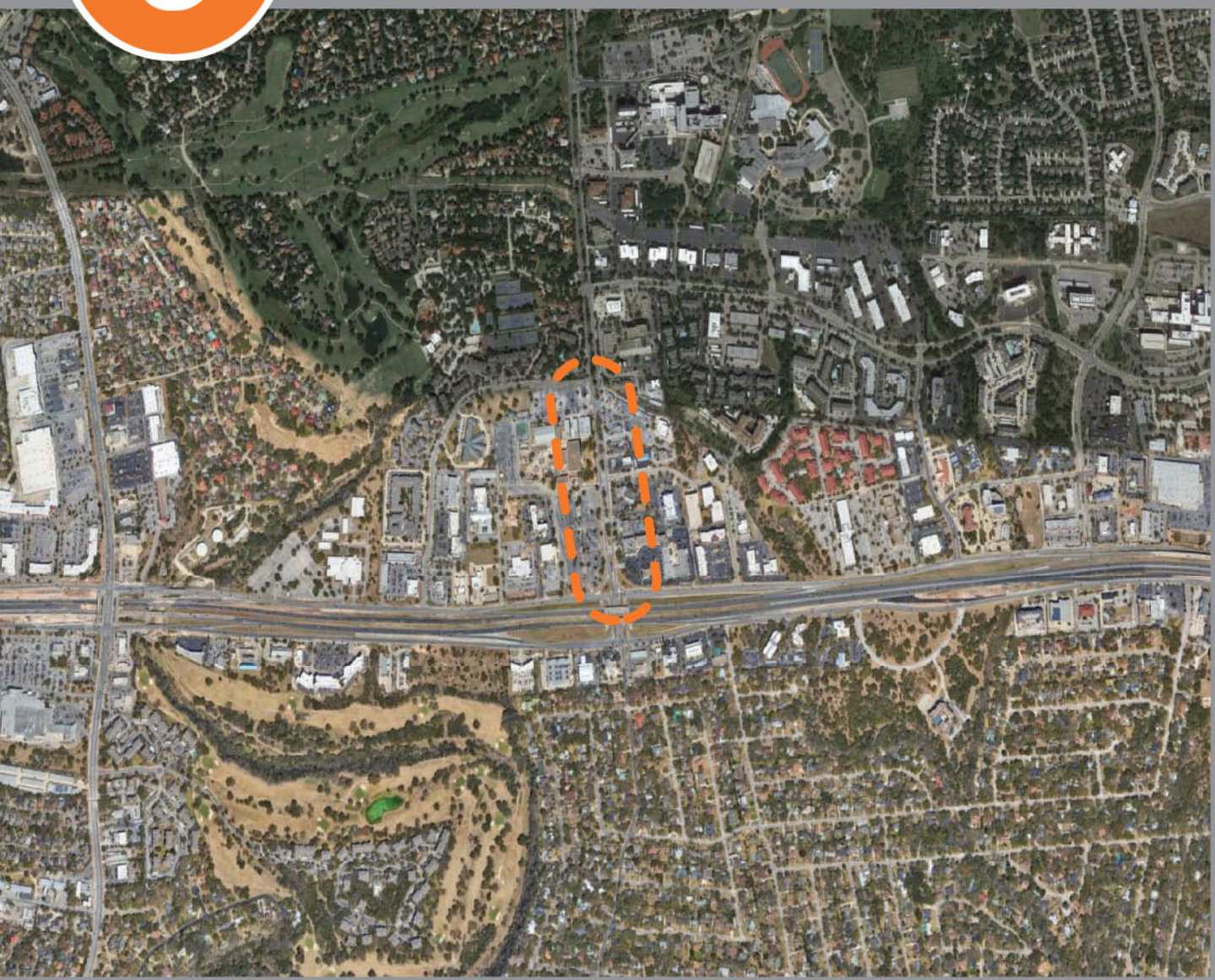
HARDY OAK BLVD



Place a dot to show you think this site needs to be a priority for Mobility

6

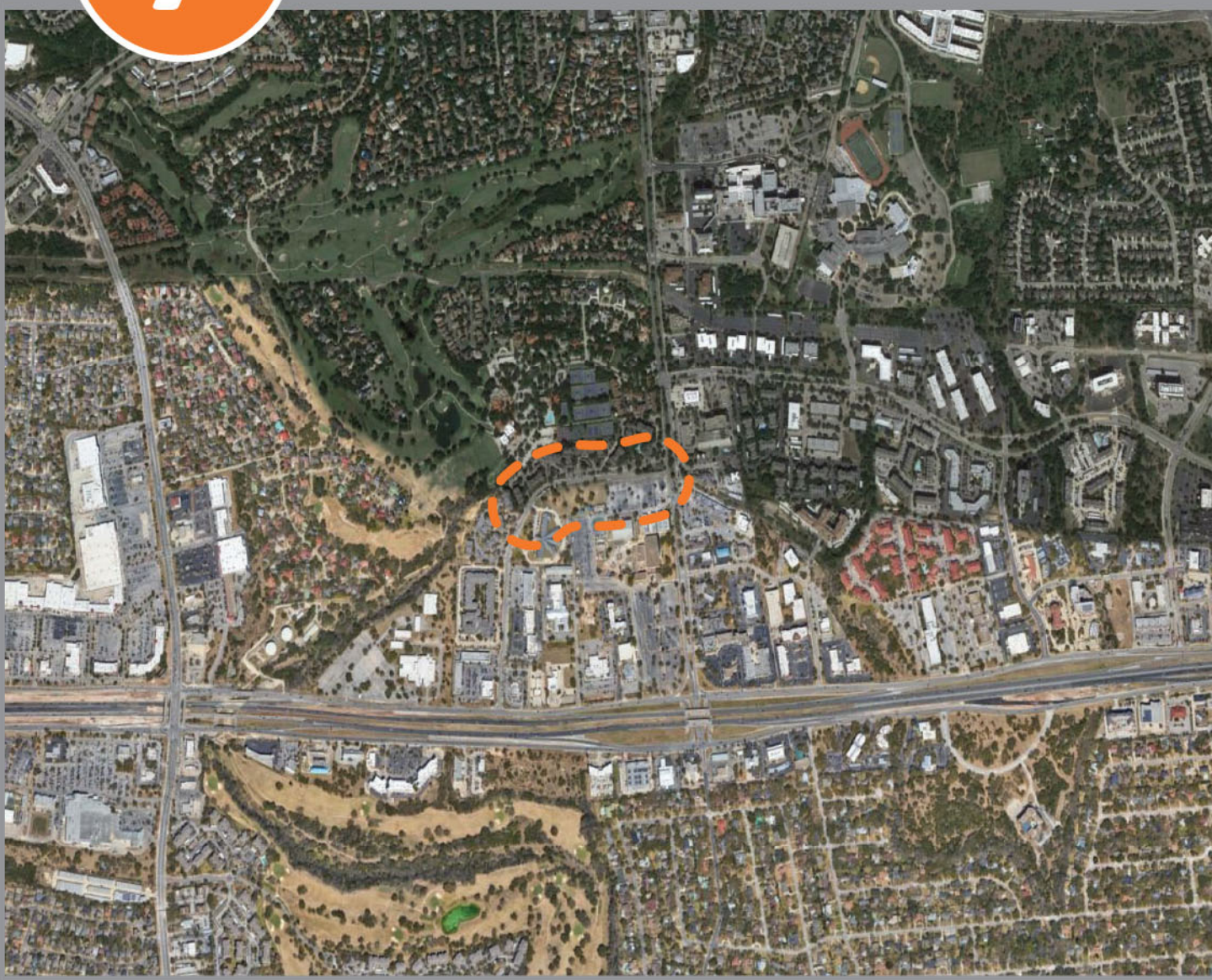
STONE OAK PKWY



Place a dot to show you think this site needs to be a priority for Mobility

7

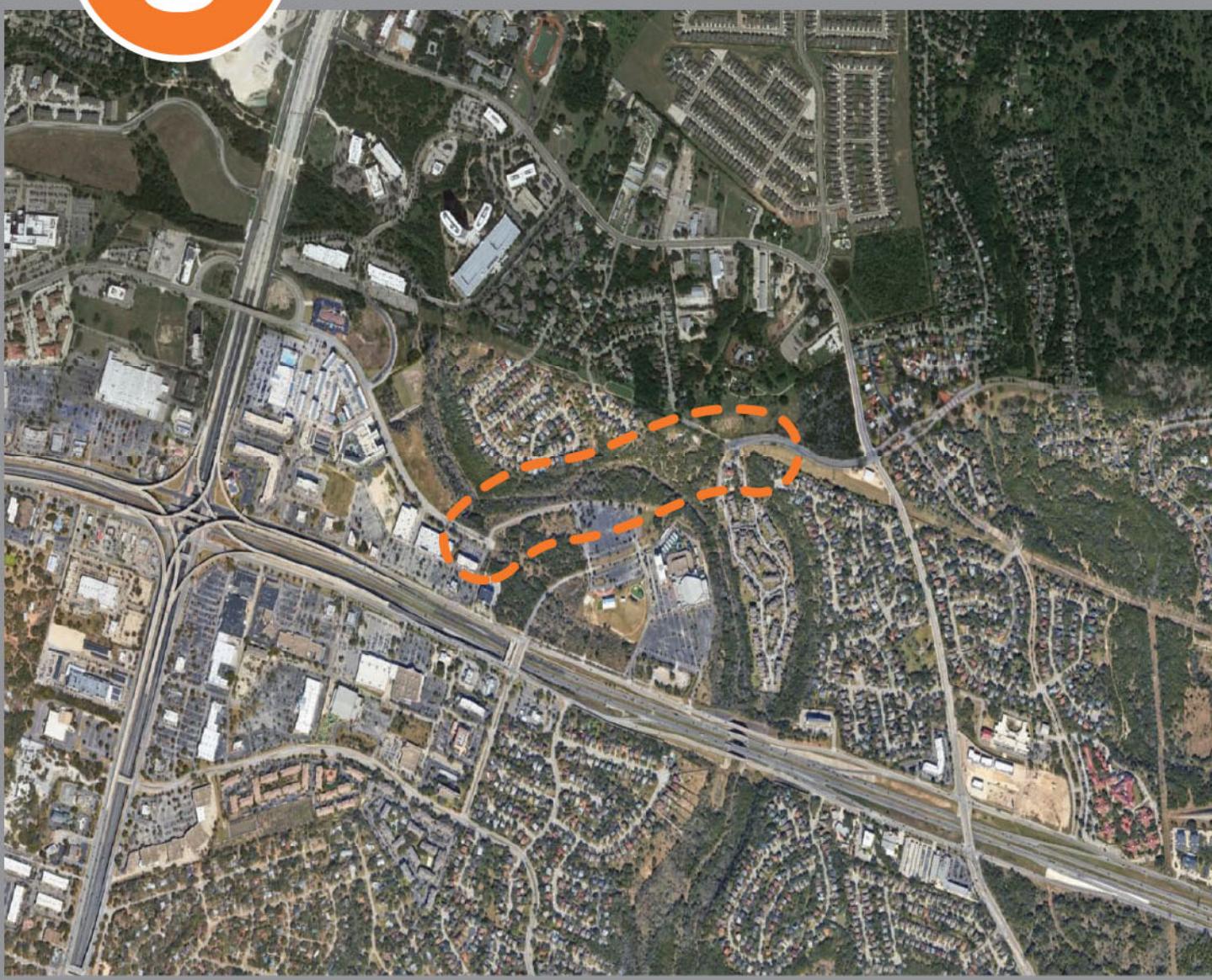
SONTERRA PLACE



Place a dot to show you think this site needs to be a priority for Mobility

8

GOLD CANYON ROAD (EXTENSION)



Place a dot to show you think this site needs to be a priority for Mobility

OTHER?

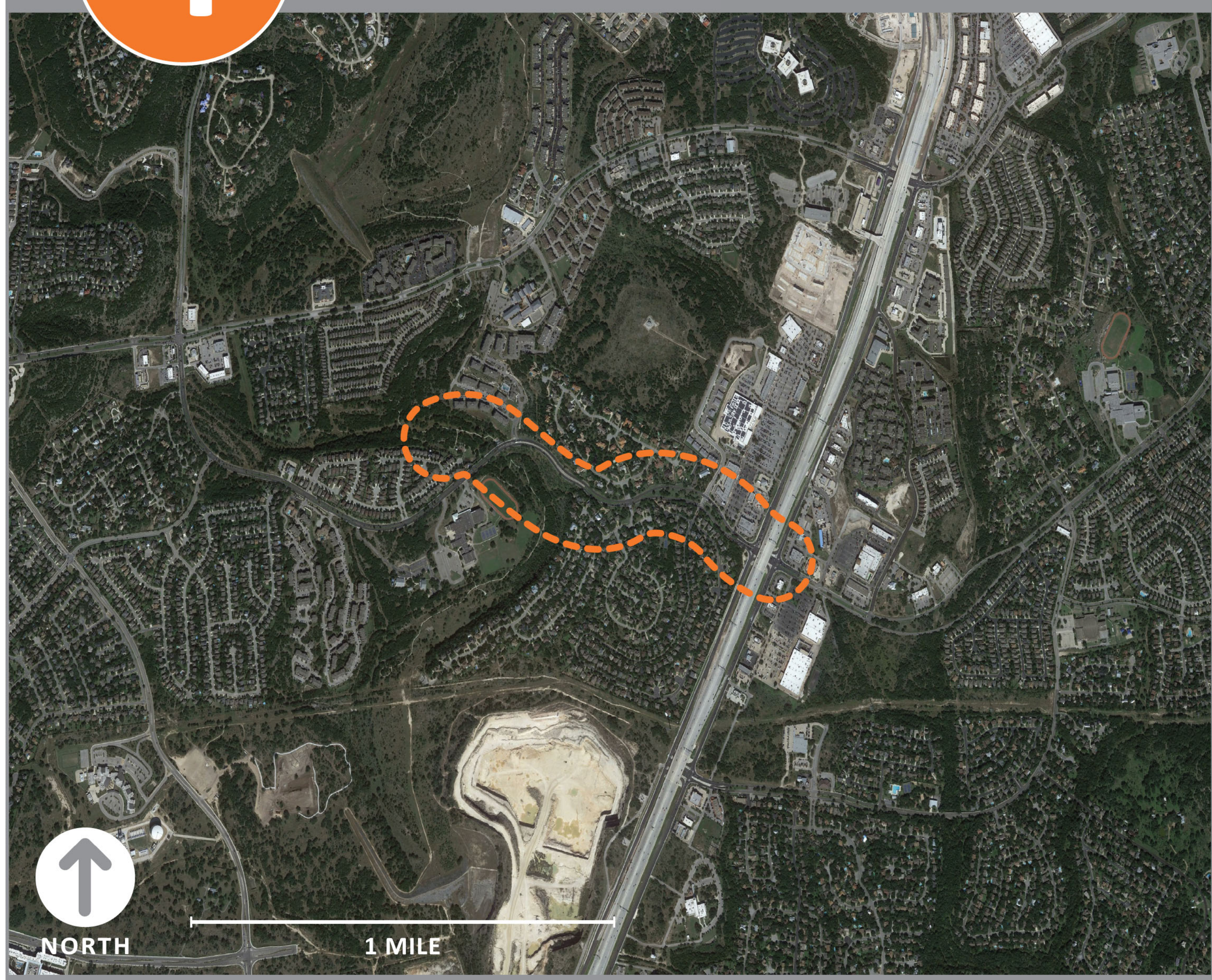
Place a note with your suggestions for any additional sites



MOBILITY

4

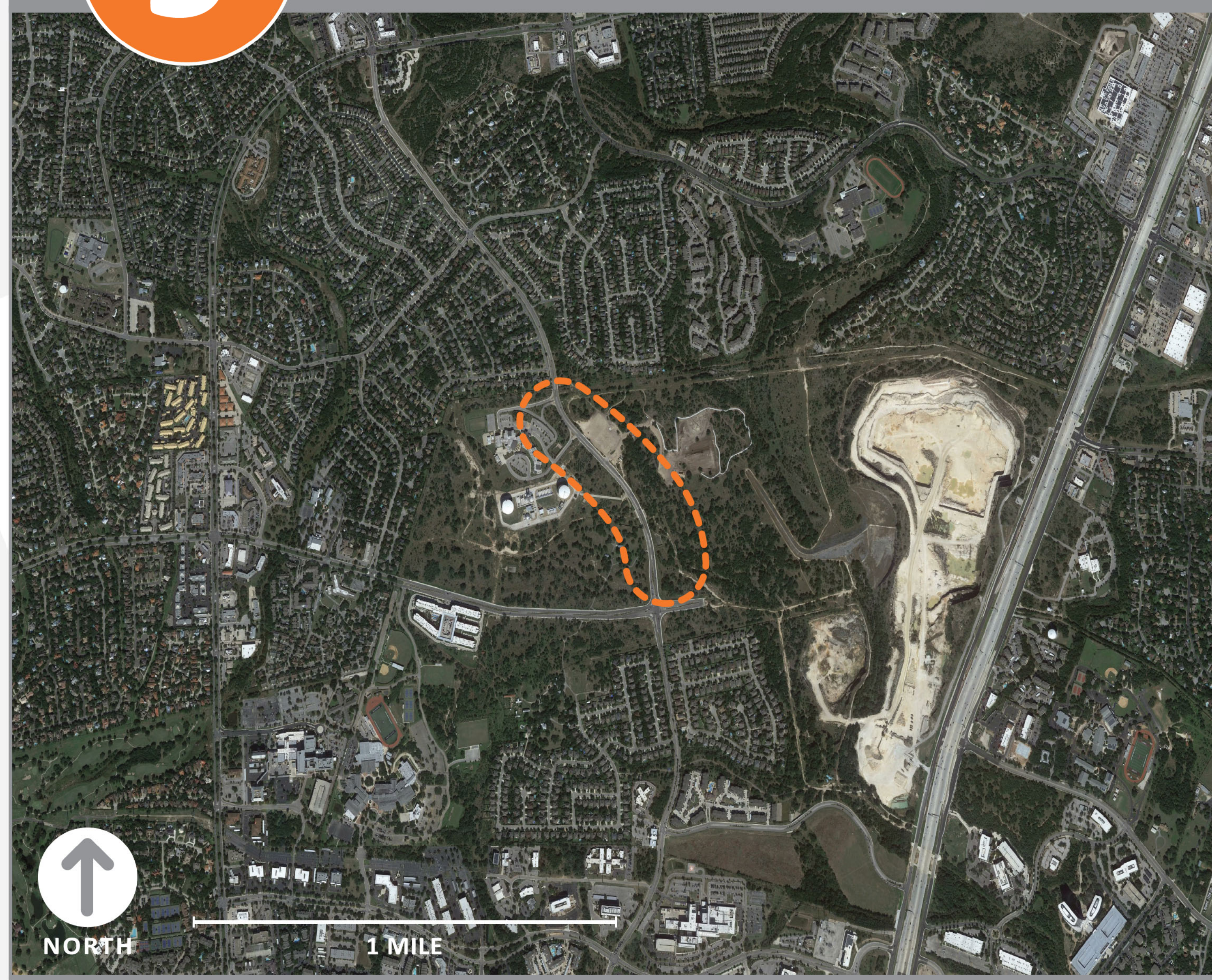
EVANS ROAD



Place one of the images provided with a note explaining why you picked it, or post a sticky note with a comment, to indicate what kind of mobility improvements you would like to see at this site.

5

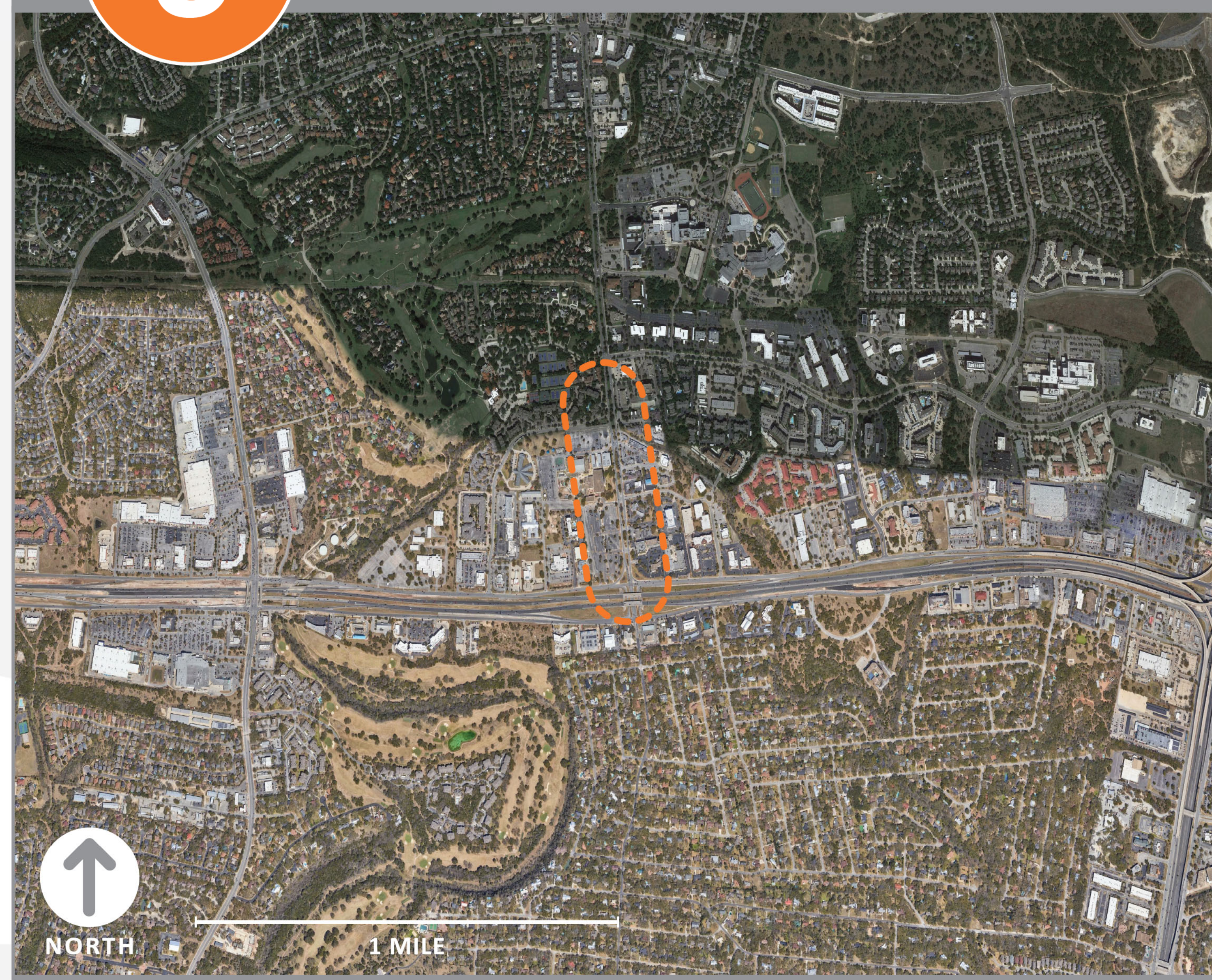
HARDY OAK BLVD



Place one of the images provided with a note explaining why you picked it, or post a sticky note with a comment, to indicate what kind of mobility improvements you would like to see at this site.

6

STONE OAK PKWY

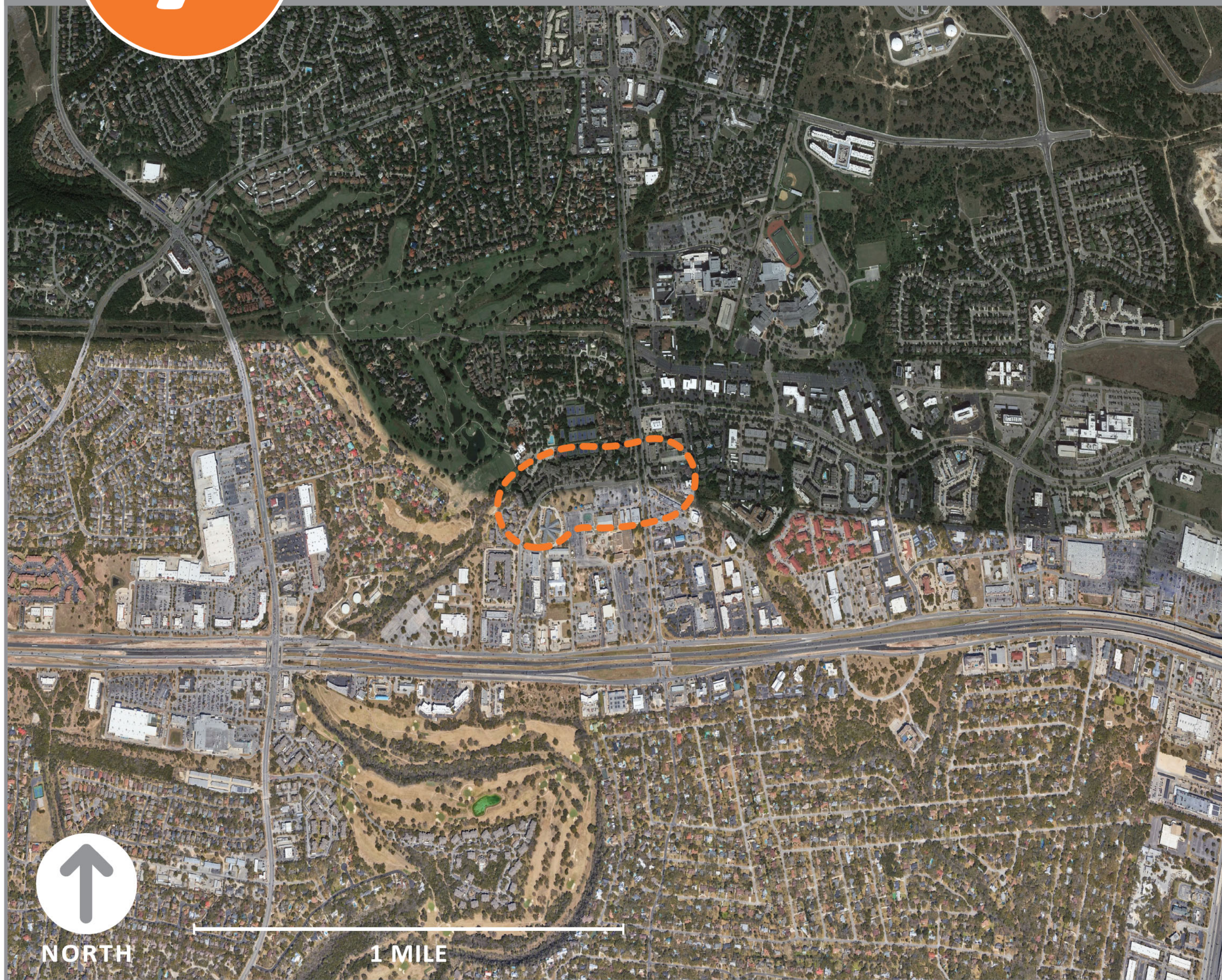


Place one of the images provided with a note explaining why you picked it, or post a sticky note with a comment, to indicate what kind of mobility improvements you would like to see at this site.

MOBILITY

7

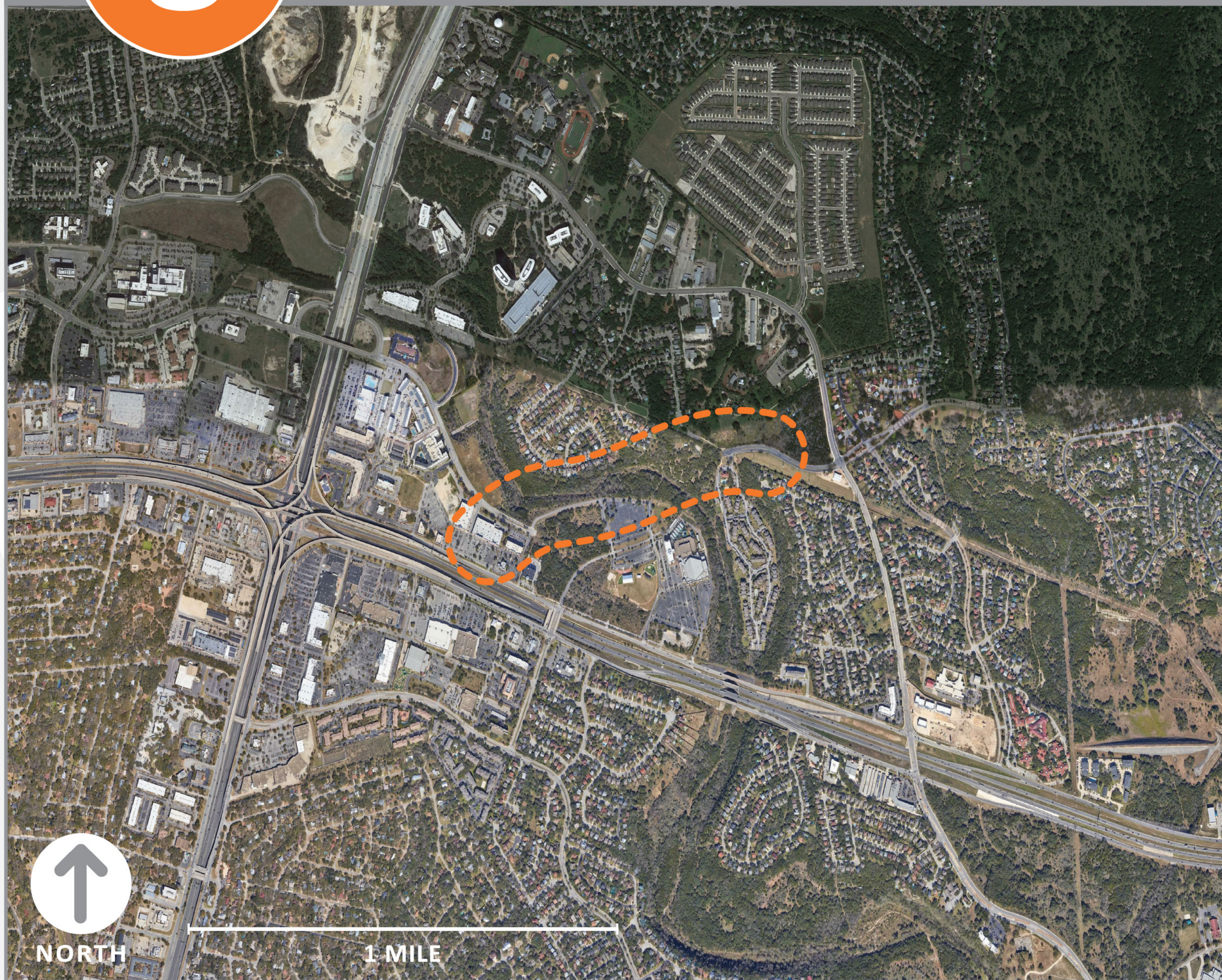
SONTERRA PLACE



Place one of the images provided with a note explaining why you picked it, or post a sticky note with a comment, to indicate what kind of mobility improvements you would like to see at this site.

8

GOLD CANYON ROAD (EXTENSION)



Place one of the images provided with a note explaining why you picked it, or post a sticky note with a comment, to indicate what kind of mobility improvements you would like to see at this site.

OTHER?

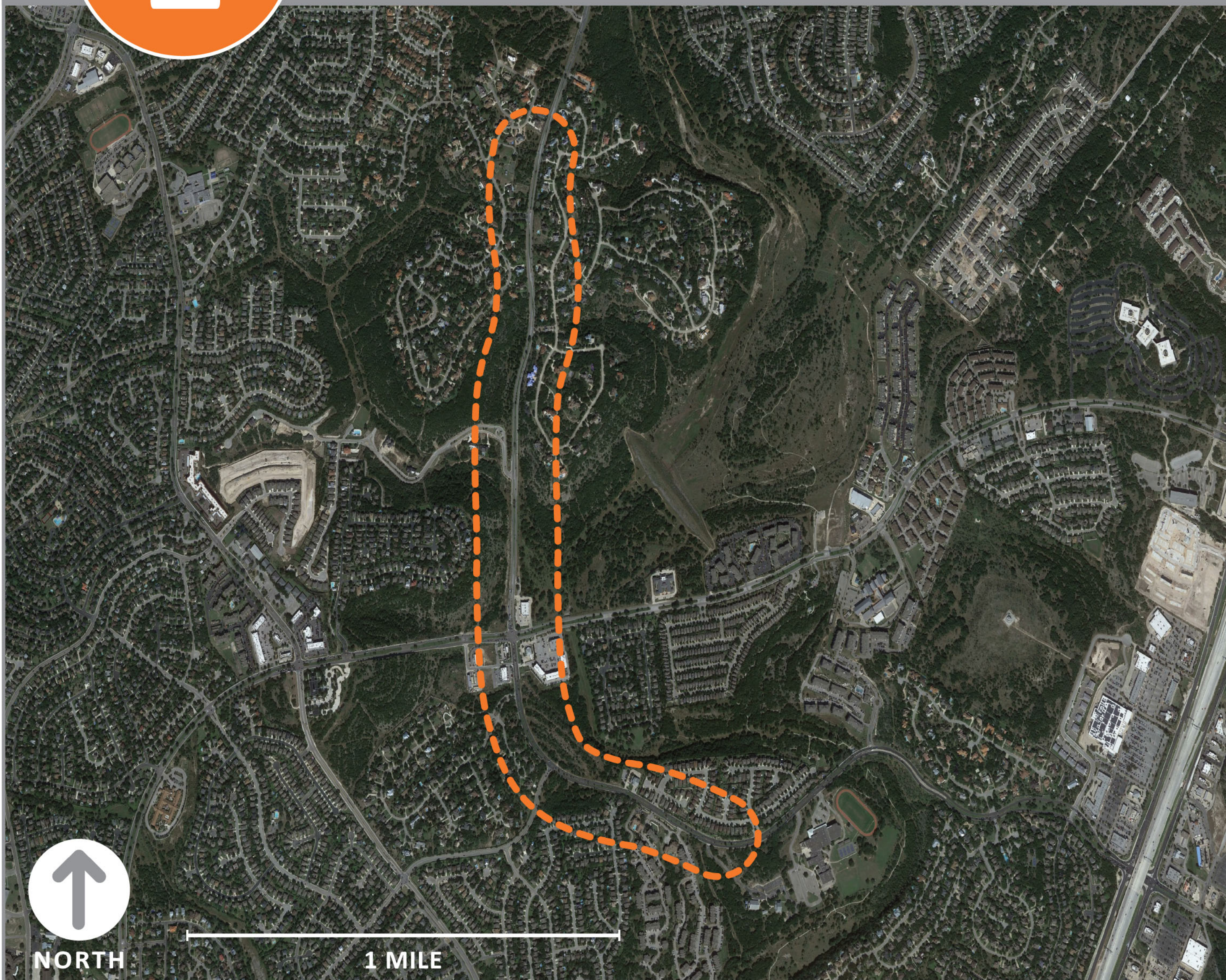
Place one of the images provided with a note explaining why you picked it, or post a sticky note with a comment, to indicate what kind of mobility improvements you would like to see in sites other than the ones previously identified.



MOBILITY

1

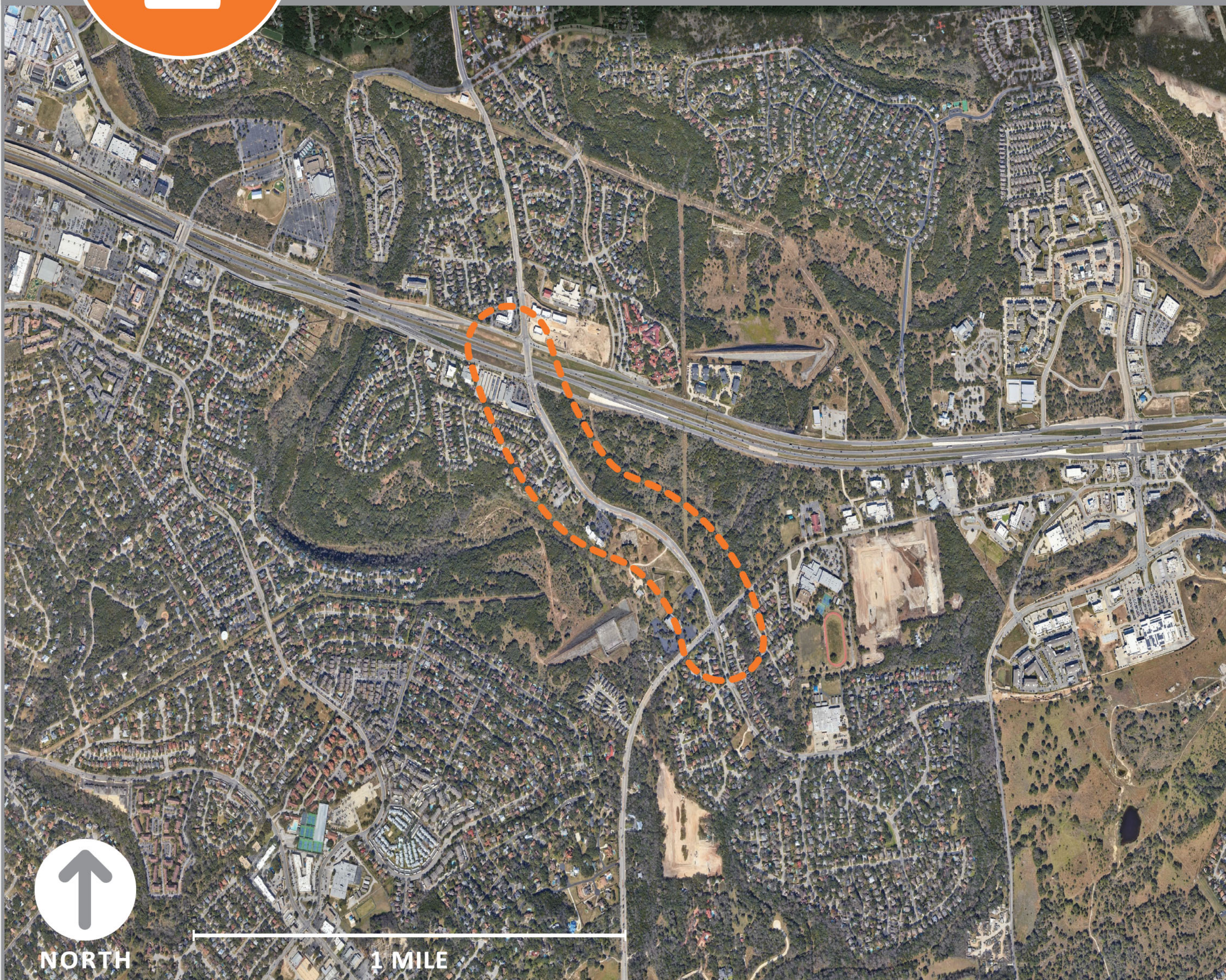
GOLF CANYON ROAD



Place one of the images provided with a note explaining why you picked it, or post a sticky note with a comment, to indicate what kind of mobility improvements you would like to see at this site.

2

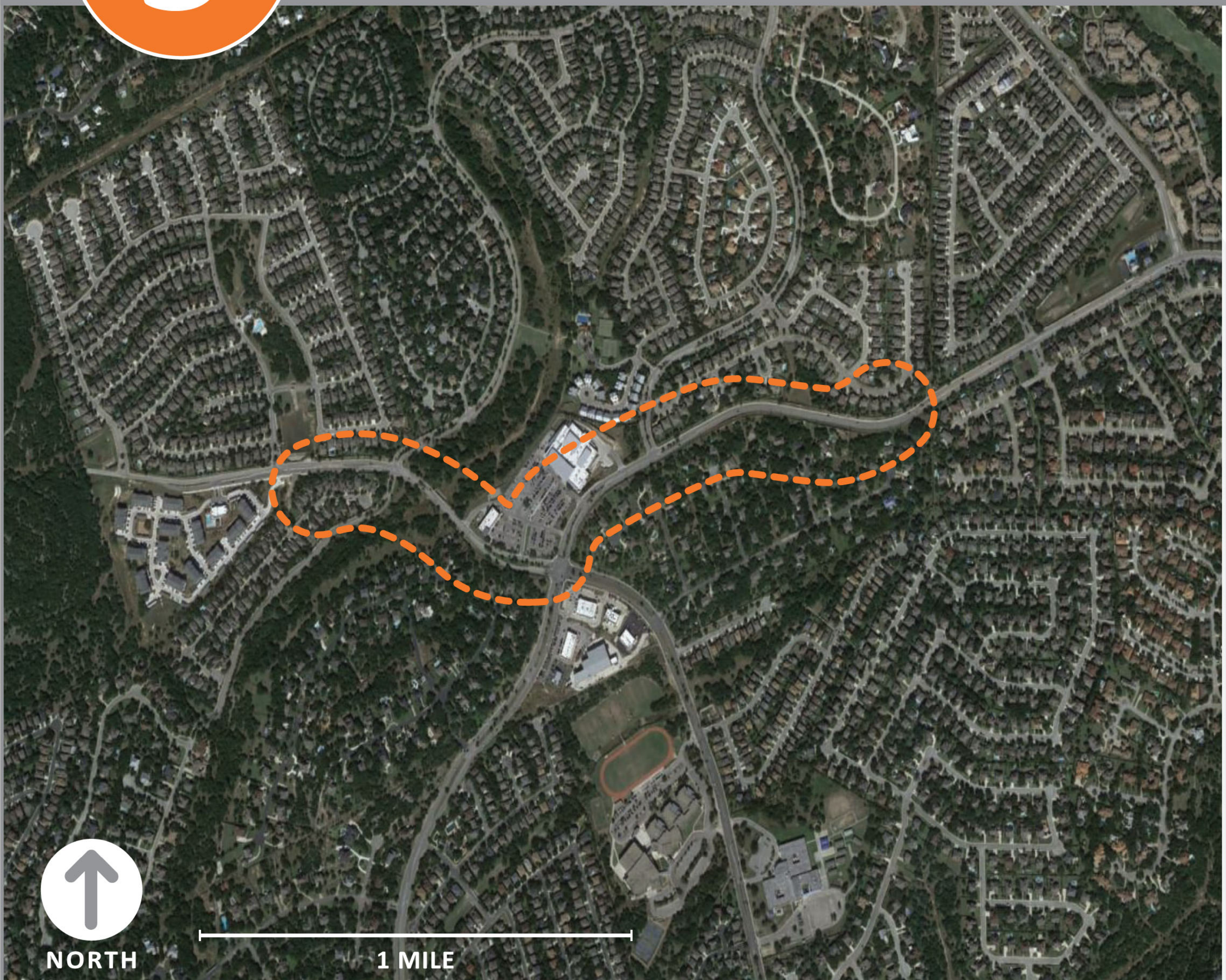
REDLAND ROAD



Place one of the images provided with a note explaining why you picked it, or post a sticky note with a comment, to indicate what kind of mobility improvements you would like to see at this site.

3

HARDY OAK BLVD & WILDERNESS OAK



Place one of the images provided with a note explaining why you picked it, or post a sticky note with a comment, to indicate what kind of mobility improvements you would like to see at this site.