



# West Northwest Community Area Plan Planning Team Meeting #3

Wednesday, April 23, 2025  
UIW School of Rehabilitation Sciences  
3:00-5:00 PM



PLANNING



Cambridge Systematics, Inc.

Bowtie

Economic & Planning Systems, Inc.

Auxiliary Marketing Services

Mosaic Planning and Development Services

Worldwide Languages

Able City



**SA**



**TOMORROW**

Introductions

# West Northwest Community Area Plan Project Team



## **City of San Antonio, Planning Department**

Chris Ryerson, Planning Administrator

Zack Magallanez, Project Manager



## **City of San Antonio, Planning Department**

Zan Marshall, Senior Transportation Planner



## **MIG**

Marcia Boyle, Co-Project Manager

Marco Hinojosa, Co-Project Manager



## **Cambridge Systematics**

Lily Lowder, Associate

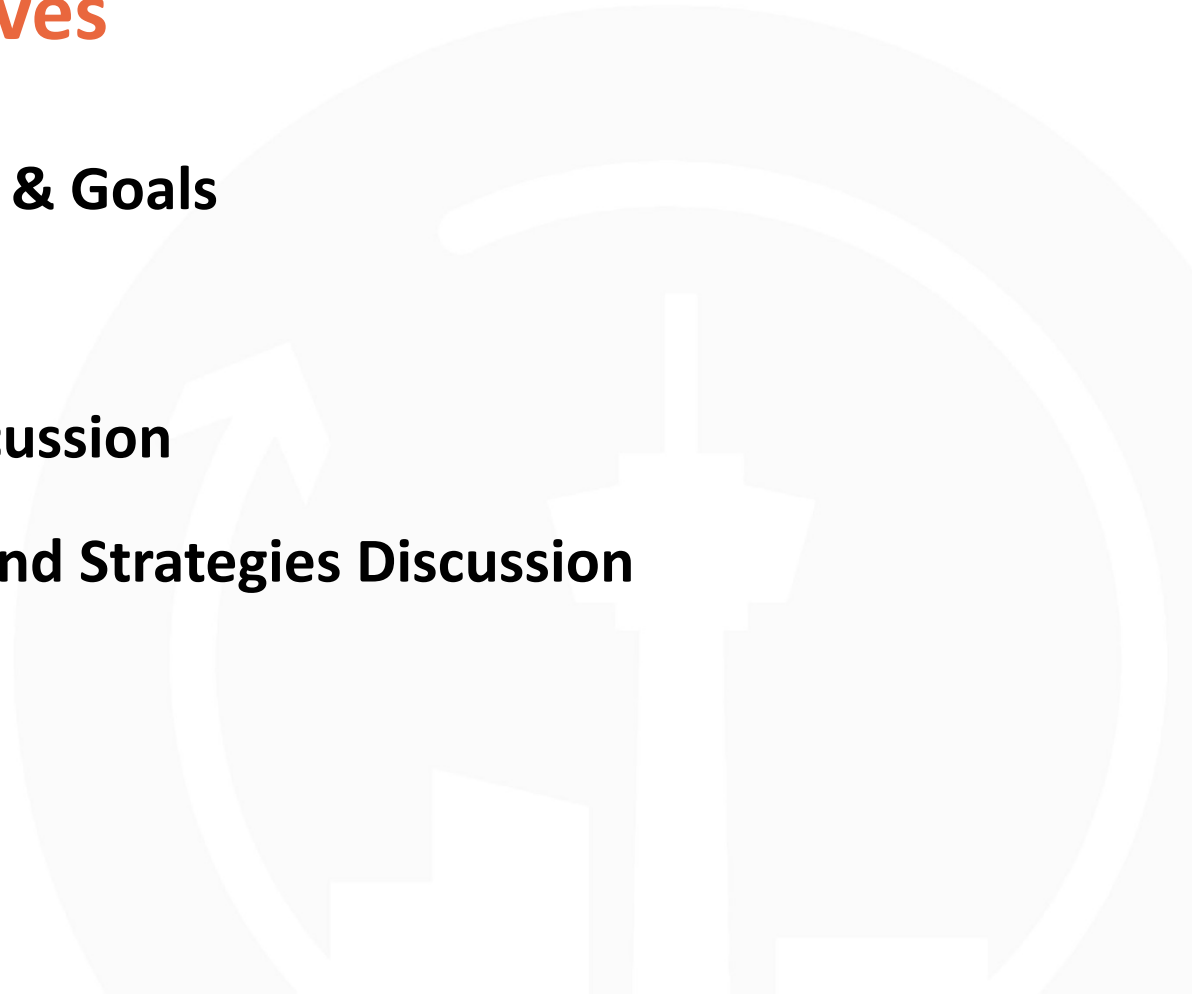
# Meeting Sequence

WE ARE HERE





# Meeting Objectives

- **Discuss Draft Vision & Goals**
  - **Mobility Overview**
  - **Mobility Needs Discussion**
  - **Mobility Mapping and Strategies Discussion**
- 
- A faint, light gray background graphic is visible on the right side of the slide. It consists of a large circle with a white arrow curving around its perimeter. In the center of the circle is a stylized white tree with a thick trunk and several branches.



## Vision and Goals Update

## ***PT#2 Draft Vision***

***The West Northwest Community Area maintains its strong sense of community by supporting and emphasizing the vibrancy and success of businesses, services, neighborhoods, and green space while improving and adding physical connections to and through the area.***

## ***Updated Draft Vision***

***The West Northwest Community Area maintains its strong sense of community by supporting and emphasizing the vibrancy and success of businesses, services, neighborhoods, and green spaces. The area is strengthened through improved physical connections, enhanced safety, organizational collaboration, and investment in infrastructure like drainage systems. Together, these efforts foster inclusive, accessible spaces that invite full-day use and enjoyment of community amenities for all residents and visitors.***

## ***PT# 2 Draft Goals (1 of 2)***

- 1. Increase connectivity and accessibility to and through the area by all modes of transportation – connecting pedestrians, cyclists, transit users, and vehicles to key destinations including parks, greenways, and creekways.***
- 2. Enhance existing, and create new, parks and green spaces with amenities that speak to a range of interests.***
- 3. Strengthen partnerships with local and regional groups and organizations that work in the area.***

## ***PT#2 Draft Goals (2 of 2)***

- 5. Improve comfort and safety throughout the West Northwest Area with additional lighting, safety measures, signage, and additional resources.***
- 6. Address environmental issues including stormwater and flooding, vehicle noise, and light pollution throughout the area to protect the area's character and charm.***
- 7. Encourage high-quality, development (residential and commercial) to be less auto-oriented and more walkable, and to provide opportunities for and connections to more local businesses.***

## *Updated Draft Goals (1 of 2)*

- 1. Increase connectivity and accessibility to and through the area by all modes of transportation – connecting pedestrians, cyclists, transit users, and vehicles to key destinations including parks, greenways, and creekways.*
- 2. Create new and enhance existing parks and green spaces with amenities that speak to a range of interests.*
- 3. Strengthen partnerships with local and regional groups, organizations, and City departments through community collaboration and coordination to support initiatives that improve neighborhood well-being and further enhance the quality of life for all residents.*

## ***Updated Draft Goals (2 of 2)***

- 1. Improve user experience and comfort by enhancing trail safety through better lighting, clear and consistent signage, and the application of Crime Prevention Through Environmental Design (CPTED) principles.***
- 2. Address environmental issues including stormwater and flooding, vehicle noise, and light pollution to protect the area's character and charm.***
- 3. Encourage high-quality development (especially residential and commercial) that is less auto-oriented and more walkable, which provides opportunities for and connections to local businesses.***



# Updated Draft Vision and Goals

The West Northwest Community Area maintains its strong sense of community by supporting and emphasizing the vibrancy and success of businesses, services, neighborhoods, and green spaces. The area is strengthened through improved physical connections, enhanced safety, organizational collaboration, and investment in infrastructure like drainage systems. Together, these efforts foster inclusive, accessible spaces that invite full-day use and enjoyment of community amenities for all residents and visitors.

- 1) *Increase connectivity and accessibility to and through the area by all modes of transportation – connecting pedestrians, cyclists, transit users, and vehicles to key destinations including parks, greenways, and creekways.*
- 2) *Enhance and create parks and green spaces with amenities that speak to a range of interests.*
- 3) *Strengthen partnerships with local and regional groups, organizations, and City departments through community collaboration and coordination to support initiatives that improve neighborhood well-being and further enhance the quality of life for all residents.*
- 4) *Improve user experience and comfort by enhancing trail safety through better lighting, clear and consistent signage, and the application of Crime Prevention Through Environmental Design (CPTED) principles.*
- 5) *Address environmental issues including stormwater and flooding, vehicle noise, and light pollution to protect the area's character and charm.*
- 6) *Encourage high-quality development (residential and commercial) to be less auto-oriented and more walkable, and to provide opportunities for and connections to local businesses.*

# Updated Draft Vision and Goals

The West Northwest Community Area maintains its strong sense of community by supporting and emphasizing the vibrancy and success of businesses, services, neighborhoods, and green spaces. The area is strengthened through **improved physical connections**, enhanced safety, organizational collaboration, and investment in infrastructure like drainage systems. Together, these efforts foster inclusive, accessible spaces that invite full-day use and enjoyment of community amenities for all residents and visitors.

- 1) *Increase connectivity and accessibility to and through the area by all modes of transportation – connecting pedestrians, cyclists, transit users, and vehicles to key destinations including parks, greenways, and creekways.*
- 2) *Create new and enhance existing parks and green spaces with amenities that speak to a range of interests.*
- 3) *Strengthen partnerships with local and regional groups, organizations, and City departments through community collaboration and coordination to support initiatives that improve neighborhood well-being and further enhance the quality of life for all residents.*
- 4) *Improve comfort and safety by enhancing trail safety through better lighting, clear and consistent signage, and the application of Crime Prevention Through Environmental Design (CPTED) principles.*
- 5) *Address environmental issues including stormwater and flooding, vehicle noise, and light pollution throughout the area to protect the area's character and charm.*
- 6) *Encourage high-quality, development (**especially** residential and commercial) that is less auto-oriented and more walkable, which provides opportunities for and connections to more local businesses.*



## Mobility Overview

# Mobility Challenges

## Fast Facts



### ***DANGEROUS BY DESIGN***

People of color and low-income populations are disproportionately burdened by pedestrian injuries and deaths.



### ***CHILDREN, OLDER ADULTS, AND PEOPLE WITH DISABILITIES ARE MOST AT RISK***

Every day, 3 children and 25 older adults are killed in a car crash. Wheelchair users are 36% more likely to die in a car crash.



### ***TRANSPORTATION CONTRIBUTES TO GREENHOUSE GASES***

38% of San Antonio's Greenhouse Gas Emissions come from passenger cars, light trucks and heavy trucks

*Sources: Centers for Disease Control and Prevention, SA Climate Ready.*

# Mobility Best Practices

**Design  
infrastructure for  
all ages and  
abilities.**

**Lower speeds save  
lives.**

**Balance regional  
mobility and local  
livability.**

**Integrated  
planning helps to  
future-proof  
communities.**

**Provide mobility  
choices and  
options.**

**Align mobility  
network with land  
uses.**

# Mobility Best Practices

**Design  
infrastructure for  
all ages and  
abilities.**

**Lower speeds save  
lives.**

**Balance regional  
mobility and local  
livability.**

**Integrated  
planning helps to  
future-proof  
communities.**

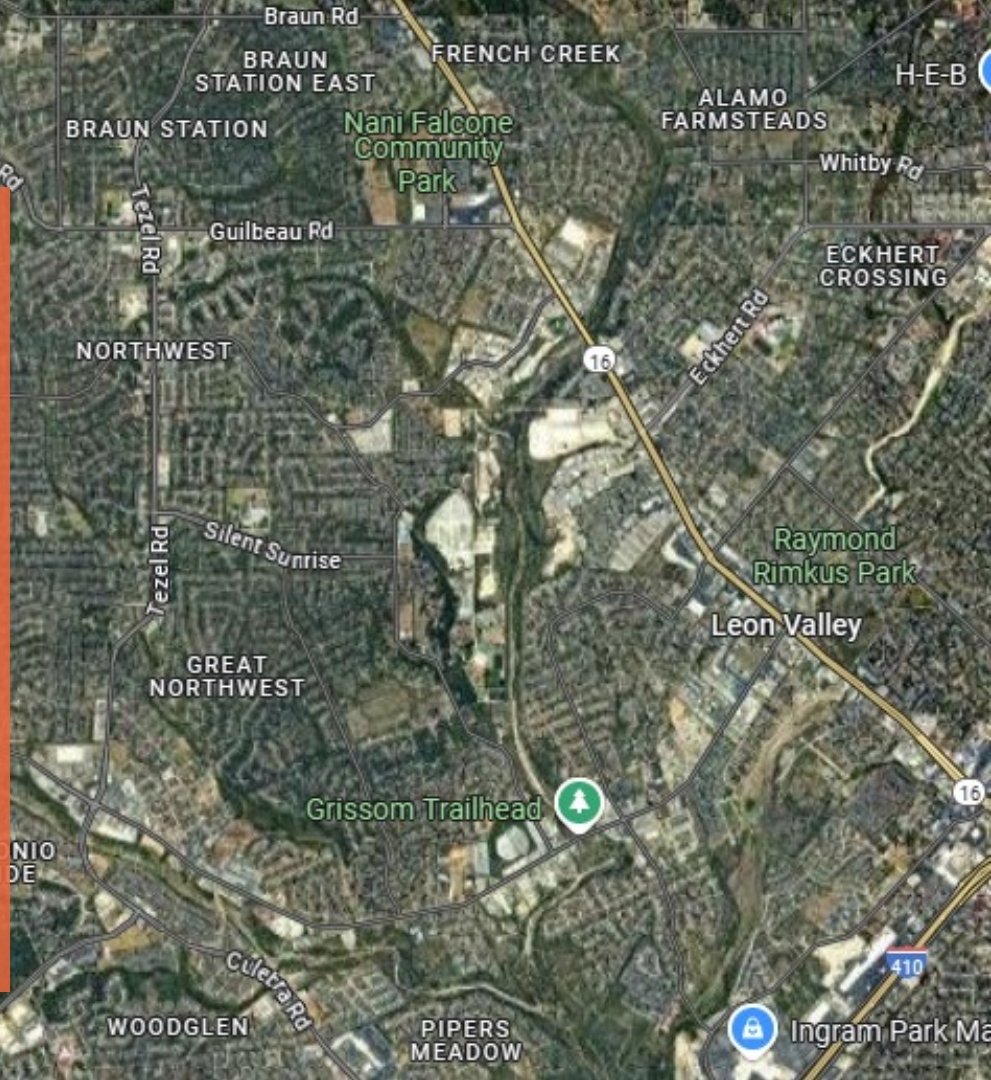
**Provide mobility  
choices and  
options.**

**Align mobility  
network with land  
uses.**



# Mobility and Land Use

- The historical design of the West Northwest street network affects how people travel today.
- Land use and mobility are mutually reinforcing.
- The current land uses in the West Northwest are diverse and reflect differing transportation needs.





# Transportation Department

*Our Initiatives*







## TRANSPORTATION

# Introduction

- “The Transportation Department is dedicated to creating a safe, sustainable and equitable, multi-modal transportation system for San Antonio.”
- Previously part of Public Works (PWD) and Transportation & Capital Improvements (TCI)
- Responsibilities
  - Strategic Transportation Planning
  - Project Implementation
  - Community Engagement
  - Regional Coordination of Transportation Projects
  - Data Analysis & Safety Education

# Vision Zero

- Eliminate all traffic – related deaths and serious injuries from our streets.

- Safe System Approach



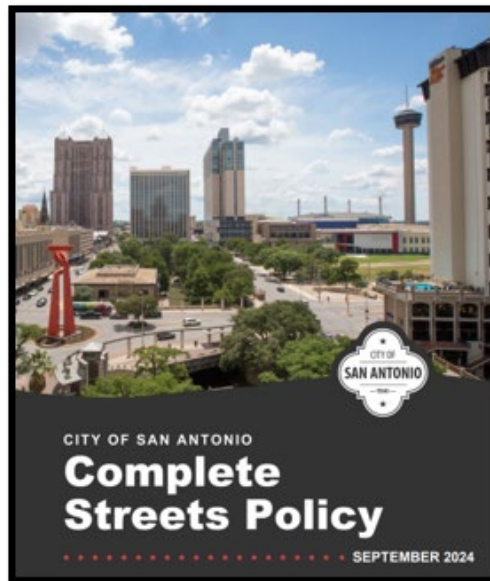
- Passed Action Plan in 2024

1. Equity Report
2. Engagement
3. High – Injury (HIN) and High – Risk (HRN) Network
4. Implementation



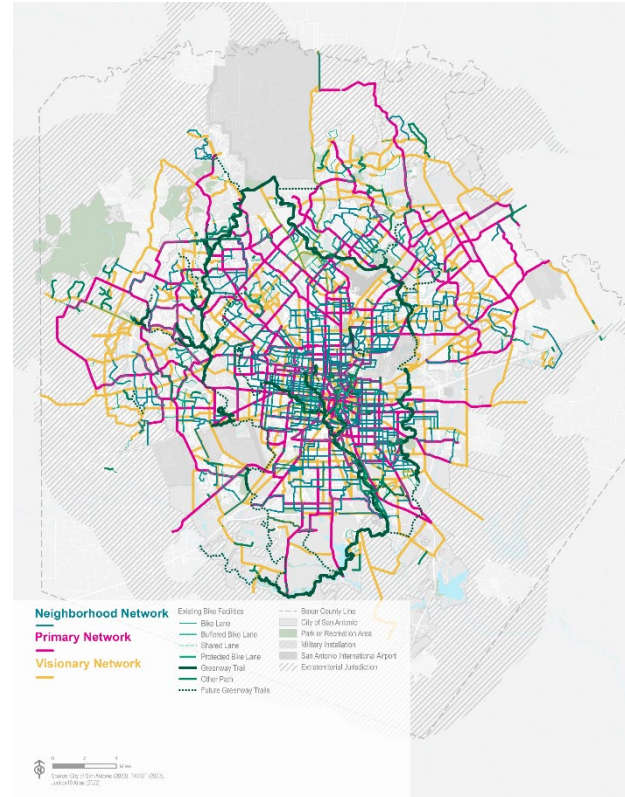
# Complete Streets

- Adopted in 2011, Updated in 2024
- Two Phased Approach
  1. Update Policy (**COMPLETE**)
  2. Implementation (**IN PROGRESS**)
    - a) Community Engagement
    - b) Design Guide
    - c) Performance Metrics
    - d) Project Prioritization
    - e) Transportation Committee
    - f) Interagency Partnerships
    - g) Educate!!!
- Emphasizes:
  - All Modes, All Users
  - Flexibility
  - New Focus Areas



# Bike Network Plan

- Update to the 2011 Bike Plan
- “Building and maintaining an accessible, comfortable, complete, and safe bicycle network”.
- 1,740 miles of new and upgraded bike facilities.



**THANK YOU!**





# SA TOMORROW

## VIA Metropolitan Transit Overview





April 22, 2025

OUR VISION AND MISSION

# CONNECTING OUR REGION

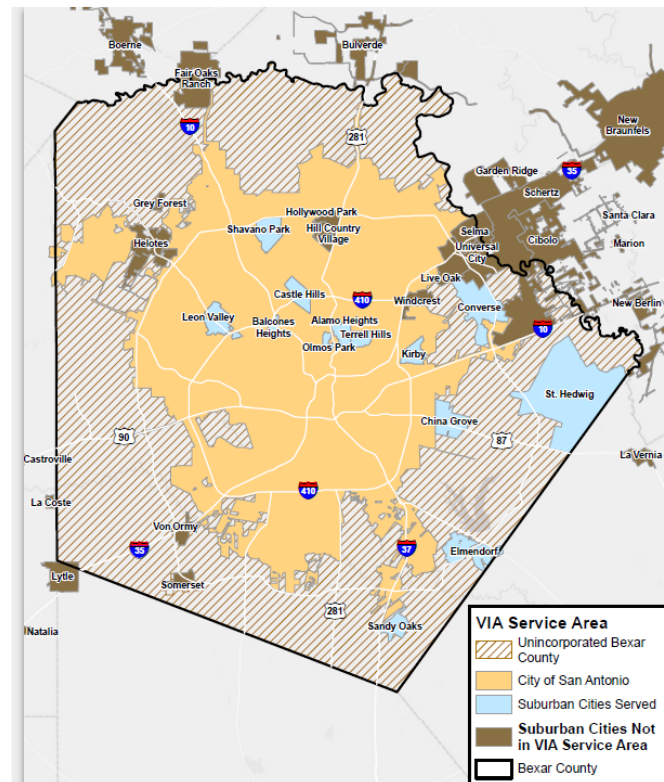
VIA Metropolitan Transit provides regional multimodal transportation options that connect our community to opportunity, support economic vitality and enhance quality of life throughout our region.





# ABOUT VIA

- » Founded in 1977
- » Governing Board: 11 appointed board trustees serve both VIA and ATD Boards
- » Our service area covers 1,210 square miles
- » VIA buses operate seven days a week from 4 a.m. to 1 a.m.
- » VIA provides the following services in our community:
  - Bus service
  - VIAtrans paratransit service for riders with disabilities
  - VIA Primo high-frequency service
  - VIA Link ride-sharing service
  - Vanpool service for commuters
  - Park & Ride Service to events
- » Three times a year service revisions are made to adjust for changes in ridership demand patterns and cost-effectiveness.





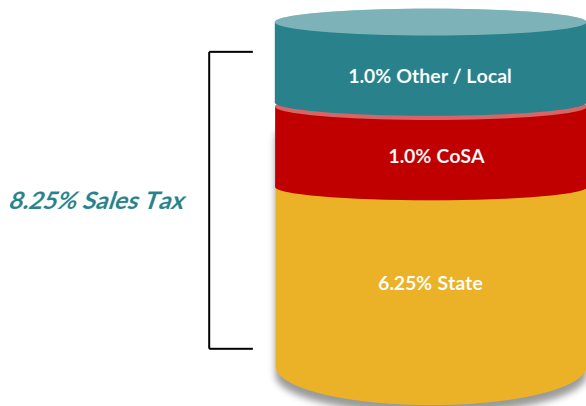


0 ✓ ✗ → [KEEPSAMOVING.COM](https://keepsamoving.com)

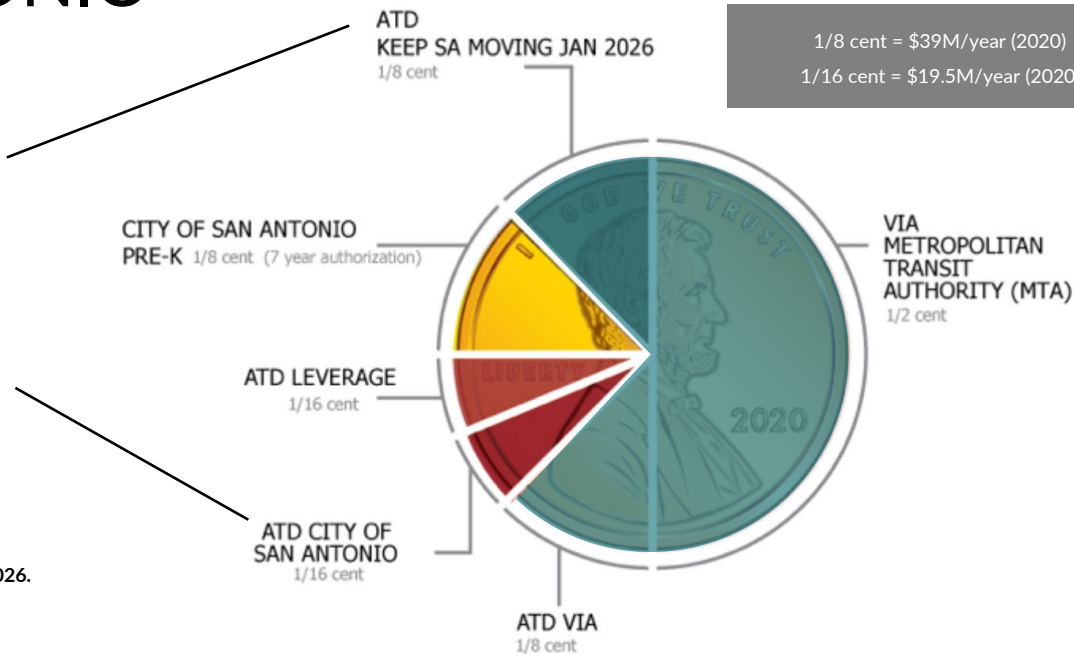


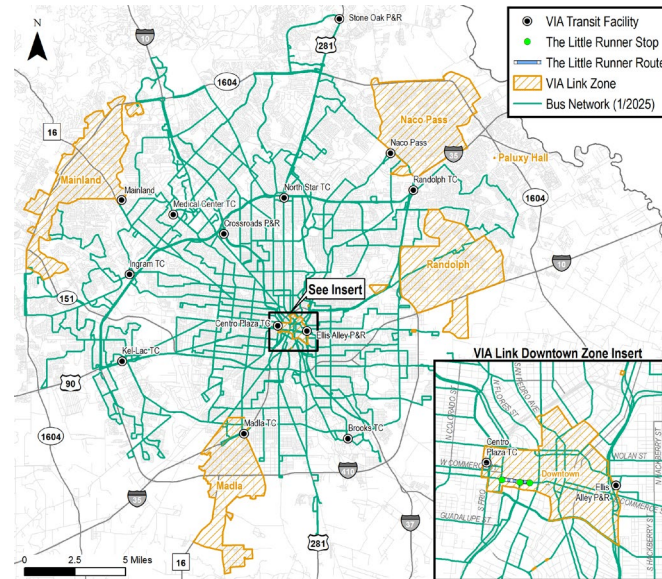
# CITY OF SAN ANTONIO

SALES TAX ALLOCATION 2026



VIA will receive  $\frac{3}{8}$  cent of a sales tax after January 1, 2026.







0 ✓ ✗ → [KEEPSAMOVING.COM](https://keepsamoving.com)



# Keep SA Moving (KSAM)

## » IMPROVE THE SYSTEM

- Connect more people to more places with additional options by offering more frequent and reliable transit service
- Focus on innovation

## » EXPAND MOBILITY OPTIONS

- Make more trip options available to fit different specific needs
- More VIA Link zones

## » INVEST IN CAPITAL AND TECHNOLOGY

- Advanced Rapid Transit (ART)
- Universal Travel App
- Attract federal dollars

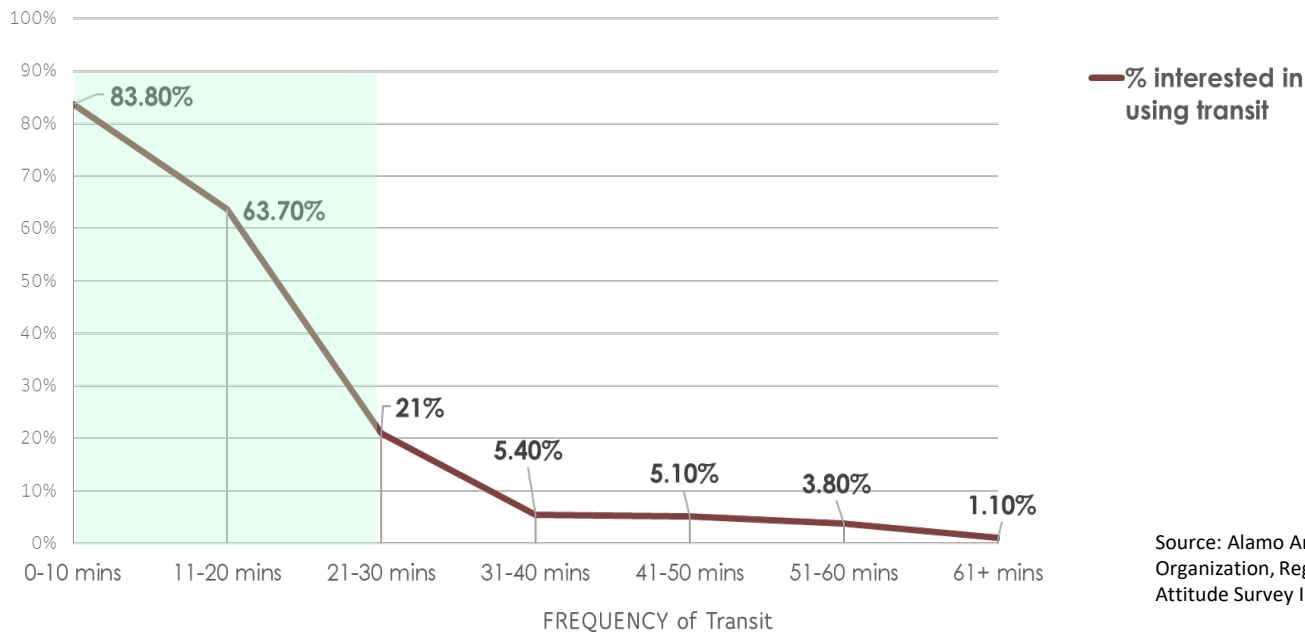




0 ✓ ✗ → [KEEPSAMOVING.COM](https://www.keepsamoving.com)



# FREQUENCY DRIVES TRANSIT



Source: Alamo Area Metropolitan Planning Organization, Regional Transportation Attitude Survey III, 2018



# VIA RAPID SERVICE IS DESIGNED TO...



Connect to schools/  
jobs/training



Help with  
traffic flow



Improve  
safety

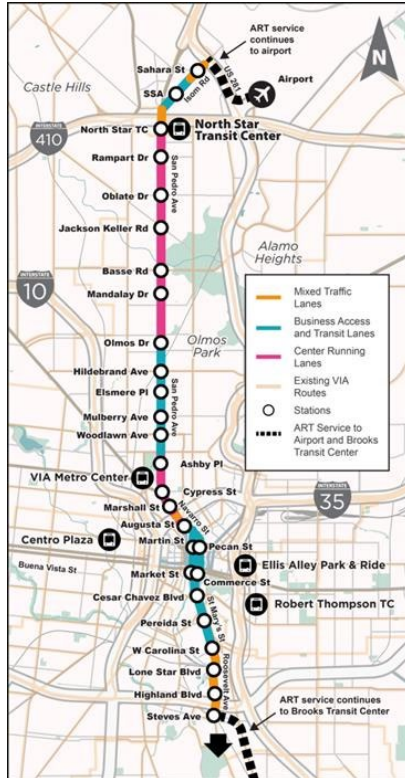


Connect to  
goods/services

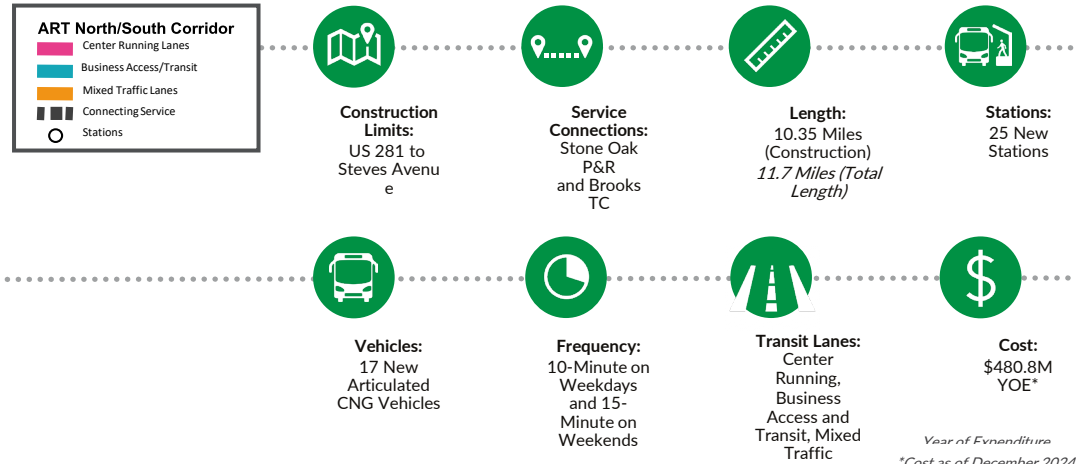


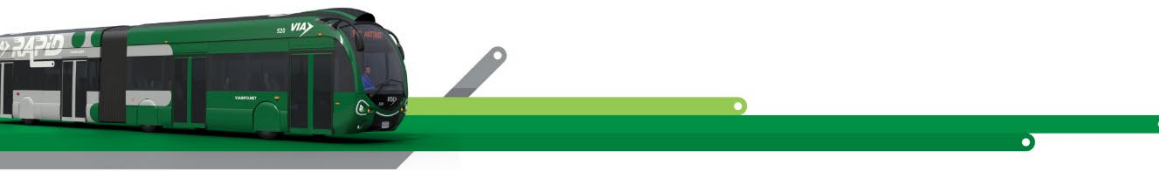
Support economic  
development



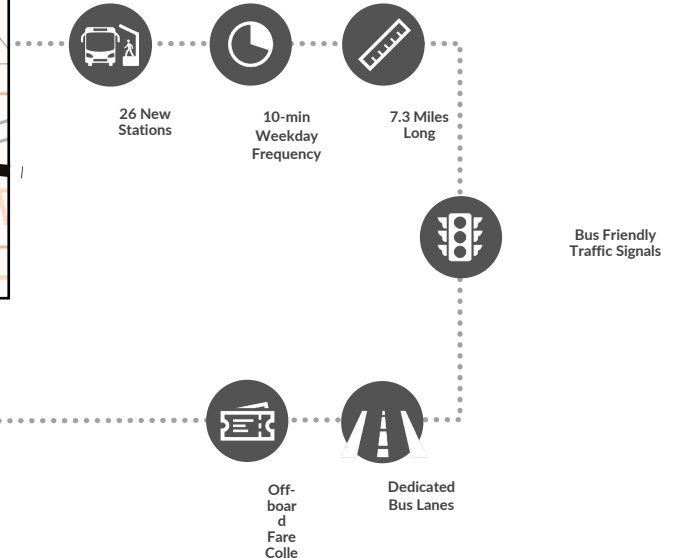
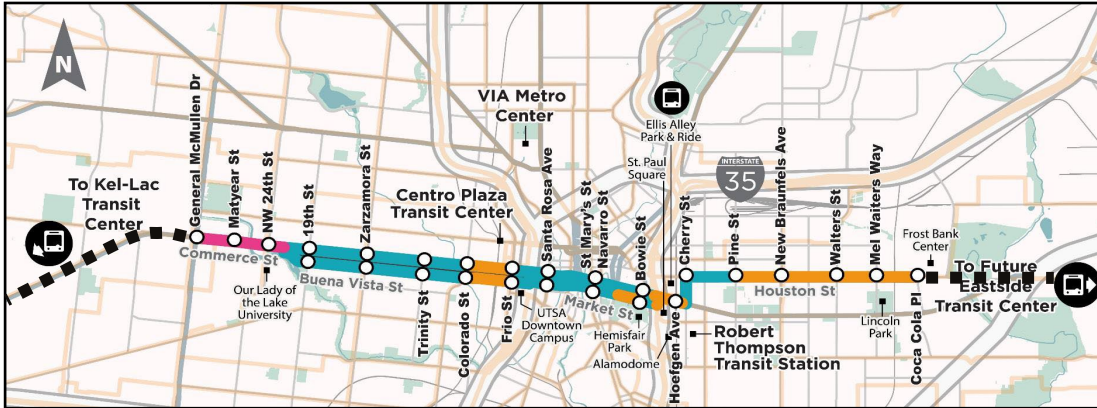


# GREEN LINE PROJECT OVERVIEW





# SILVER LINE PROJECT OVERVIEW



Current as of April 10, 2025

\* Costs as listed in FTA Annual Report on Funding Recommendations FY 2025

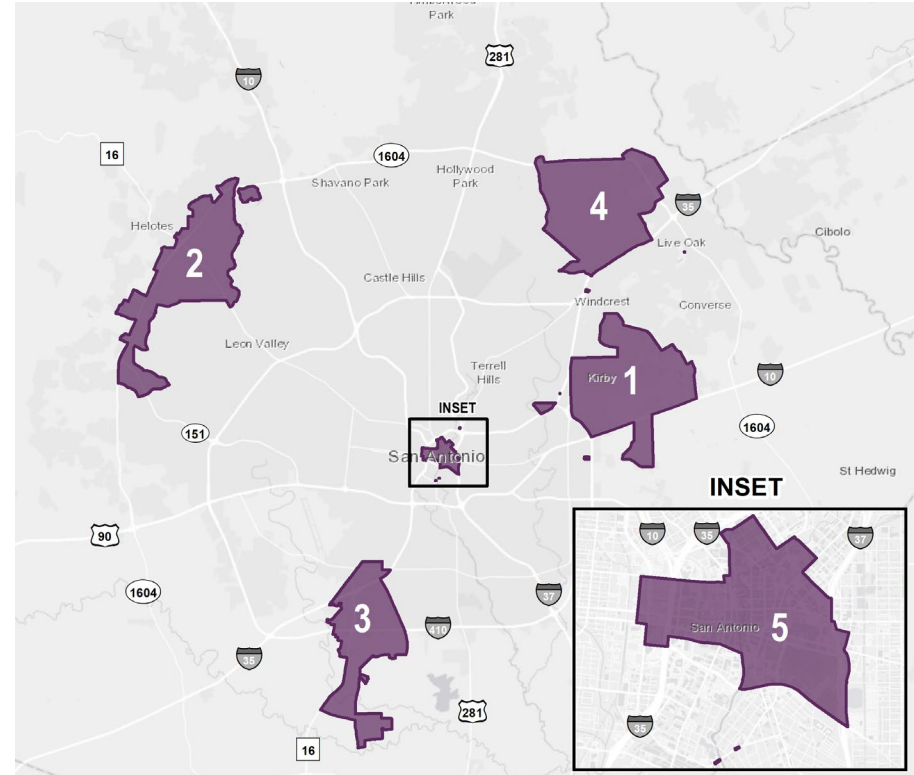




VIA Link is an on-demand ride-sharing service that offers affordable public transit options to neighborhoods within dedicated zones in the VIA service area.

Customers can request a trip – for just \$1.30 per trip – using the convenient VIA Link app, Booking Online, or by calling (210) 655-Link [5465].

Riders also can connect to regular VIA bus service to continue their trip to bus stops across the VIA service area.

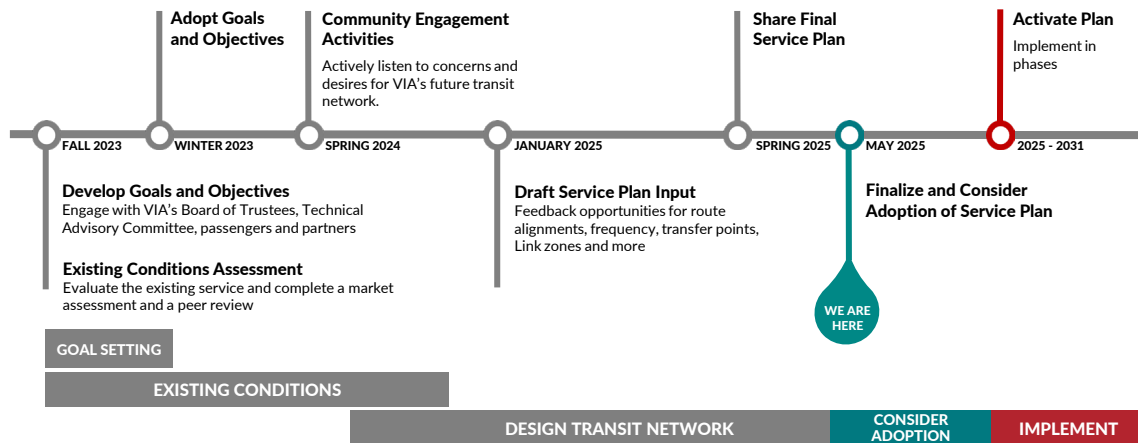






# BETTER BUS PLAN

A comprehensive transit network service evaluation and plan, inclusive of Bus and Link service, designed to strengthen VIA's transit system.



*\*Project Schedule subject to change*



FREQUENT



SIMPLE



DIRECT



CONVENIENT



# UPCOMING SERVICE CHANGES

- » VIA is committed to implementing meaningful improvements that will *enhance service* and *attract more riders*.
- » Considerations include changes in post-COVID travel patterns, requests from the public to increase service and workforce availability.

## April 2025 Service Changes

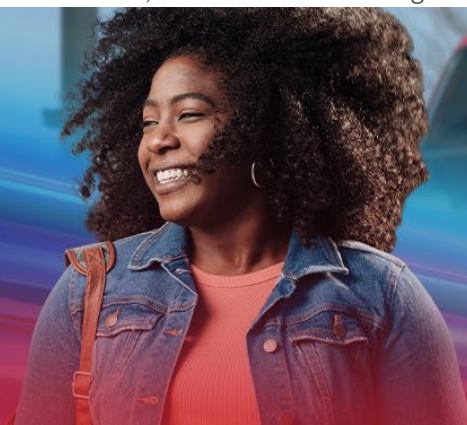
### FREQUENCY INCREASES

Weekdays: 44 Pleasanton, 68 Guadalupe, 102 Primo Military

Weekends: 20 New Braunfels, 26 Martin Luther King

# WAIT LESS DO MORE

Get where you're going  
faster than before.



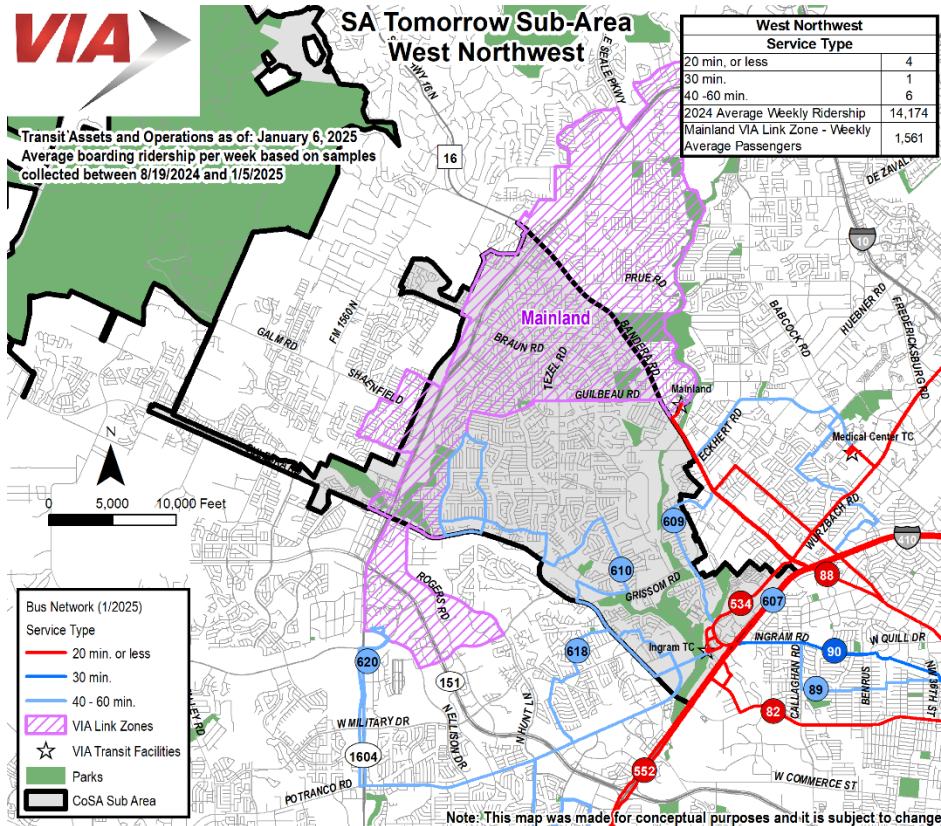
## RIDE ON





# TRANSIT NETWORK IN WEST NORTHWEST COMMUNITY

- 11 Bus Routes
- Average Weekly Ridership = 14,174
- VIA Link Mainland Zone = 1,561 Average Weekly Passengers

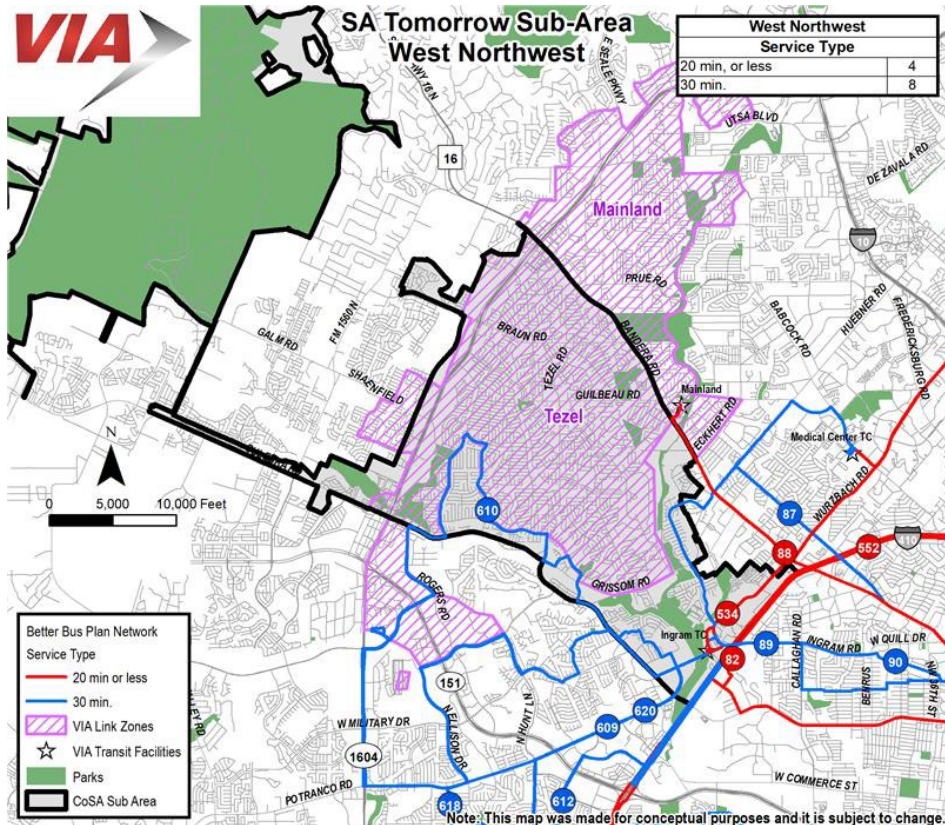




PLANNED

# TRANSIT NETWORK IN WEST NORTHWEST COMMUNITY

- Five 40 to 60-minute routes improved to 30-minute service.
- Additional Route (552) added.
- Split of VIA Link Mainland Zone into two zones.
- New VIA Link Tezel Zone.



# THANK YOU.



THANK YOU FOR YOUR TIME.

[VIAINFO.NET](http://VIAINFO.NET)





# SA TOMORROW

## Mobility Overview Discussion





# SA TOMORROW

Assets, Challenges, and  
Opportunities

# Mobility Assets

## Interstate and Arterial Roadways

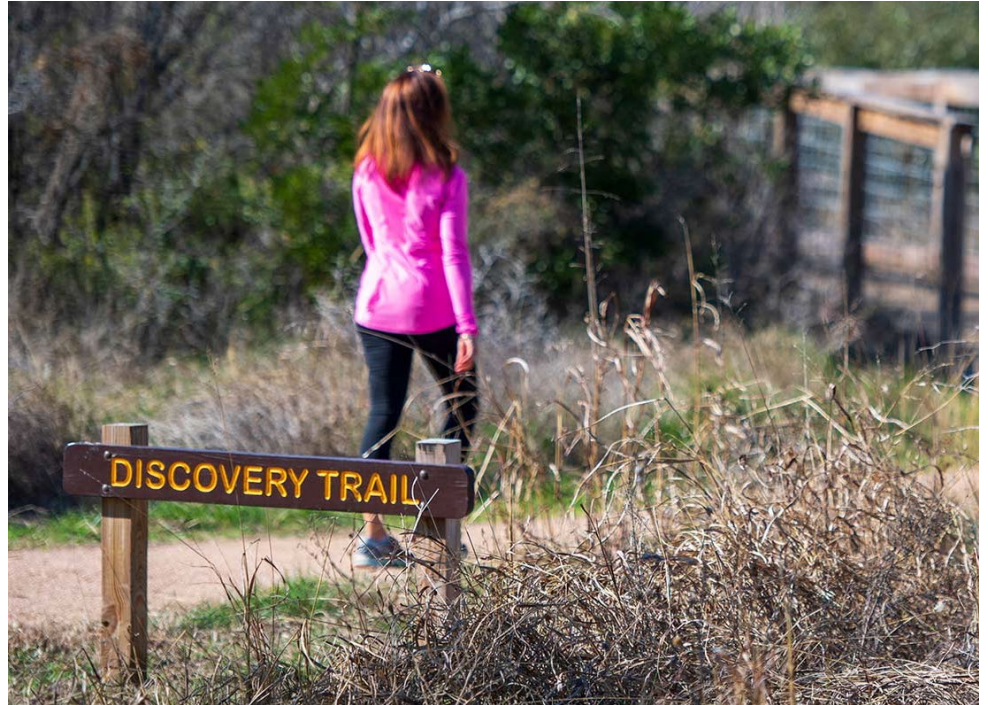
- N/S Roadways: Loop 1604 North, Grissom Rd, Wurzbach Rd, Tezel Rd
- E/W Roadways: Bandera Rd, Culebra Rd, Ingram Rd, Guilbeau Rd

## Public Transit

- 4 bus routes
- Ingram Transit Center
- VIA Link

## Bike/Pedestrian Infrastructure

- Proximity to Government Canyon State Natural Area trails
- Sidewalk network in some areas
- Bike facilities



Government Canyon State Natural Area, Source: [tpwd.texas.gov](https://tpwd.texas.gov)

# Linking Challenges & Opportunities

**Poor sidewalk connectivity** to bus stops and trailheads



**Explore enhanced bike/ped connections** to transit stops and trailheads

**Fatalities along high-capacity roadways and intersections**



**Focus on high-crash corridors** such as Culebra, Grissom, and Braun


**Extensive and growing traffic concerns**, especially on key roadways




**Promote multimodal transportation options**, especially transit

# Mobility related comments so far...

My **BIG IDEAS** for the **FUTURE** are...




Have Ymca Sicleovia  
NW.  
IN Our Area


SA  TOMORROW

THE ANTONIO PLANNING

My **BIG IDEAS** for the **FUTURE** are...



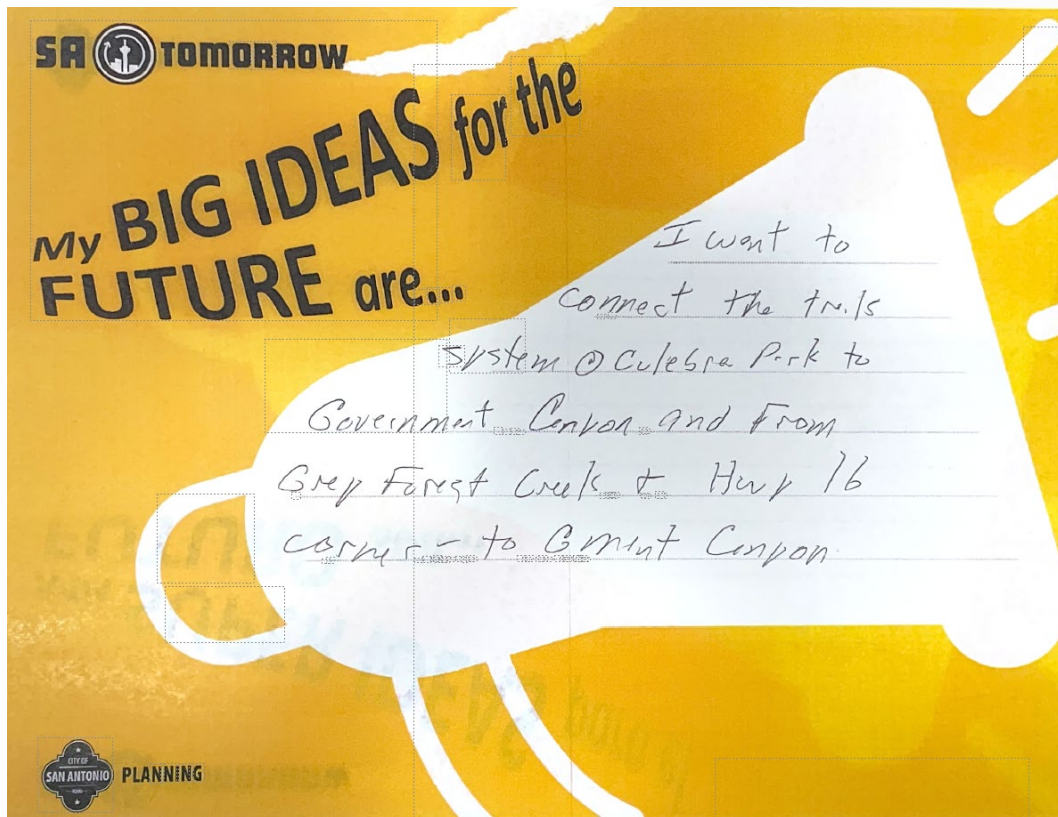
A Park & Ride in  
Our Area. NW. is  
growing so fast. It's  
Our Next Busy Medical  
Area

SA  TOMORROW

THE ANTONIO PLANNING



# Mobility related comments so far...



# Mobility related comments so far...

What would you change about this area?  
¿Qué cambiaría de esta área?

Write your thoughts below / Comparta su opinión

TRAFFIC IS HORRIBLE  
ON CUEBRA RD. # 1604.  
I AVOID THAT AREA AT ALL  
COSTS. I FEEL FOR THE  
PEOPLE THAT HAVE TO  
ACCESS CUEBRA RD  
PLEASE FIX THE TRAFFIC

What is missing from this area?  
¿Qué le falta al área?

Write your thoughts below / Comparta su opinión

More sidewalks (and accessible walkways for those  
with disabilities) as well as more options to decrease  
reliance on vehicles to get around. Additional  
bike paths and increased safety features to keep  
pedestrians/cyclists safe would be beneficial.  
More resources and affordable housing for those  
who are homeless, renting, or are prospective new  
homeowners.

What would you change about this area?  
¿Qué cambiaría de esta área?

Write your thoughts below / Comparta su opinión

I would add more accessibility features, e.g.,  
tactile bumps, sound cues, vibration, etc. to allow  
for more individuals to utilize the sidewalks, and  
also help increase the walkability of our district.  
And while I love the commitment to increase our  
trails, I think there could be more investment in  
vegetation (native trees, plants, wild flowers) to  
attract and keep wild life. It would also prevent  
our area from becoming a heat desert.



# What We've Been Hearing - Mobility

Missing frequent and reliable public transit

More public transport

The area needs accessible and safer connectivity to parks, trails, and public transit stations

Need more traffic calming on side streets

Mass transportation

A bicycle path which goes downtown from the NW side

No decent bike lanes anywhere on Culebra

Heavy daily traffic on Guilbeau



**SA**



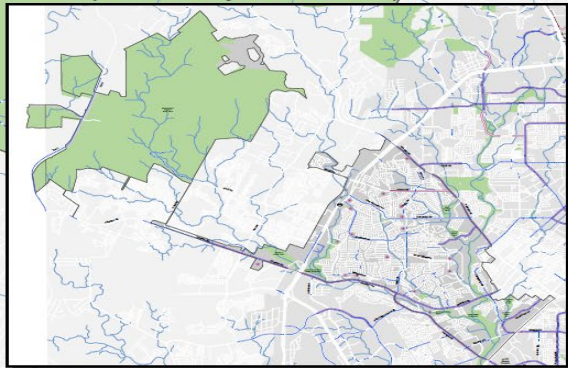
**TOMORROW**

## Mobility Needs Discussion



# SA TOMORROW

## Mobility Mapping and Strategies Discussion



## Safety

- High Injury Network (All Modes)
- High Risk Network
- At-grade Rail Crossings - all
- Low Water Crossings
- High Equity Area\*
- Schools and Universities
- SA Tomorrow Sub-Area
- Railroads
- Streams
- Parks

# Safety

\* The High Injury Network are streets in San Antonio that have been identified as intensive hot spots for crashes that cause injuries to all or more people.  
 \*\* The High Risk Network are streets in San Antonio that have been identified as places with the potential for higher than average rates of non-injury crashes.  
 † High Equity Areas are those that rank in the top 40% for both proportion of residents that are low-income and percentage of color.

# Safety Questions

## CHALLENGES

- Where are some areas where you feel unsafe while walking, biking, driving, or riding the bus?
- Are there intersections or streets where crossing is difficult or dangerous? Why?
- Have you seen or experienced near-misses or crashes? Where did they happen?

## OPPORTUNITIES

- What kinds of bike facilities (e.g., bike lanes, trails, racks) would help you ride more?
- Are there areas where better lighting, shelters, or sidewalks would make transit or walking feel safer?
- Are there particular times of day (e.g., school drop-off, rush hour, night) when safety is worse?
- If you could improve one place in your neighborhood to make it safer for getting around, what would it be?



You have **15 minutes** for discussion.



**Transit**

- VIA Link Service Area
- VIA Route Types
  - Primo - 15 min. or less
  - 20 min. or less
  - 30 min.
  - 40 - 60 min.
  - More than 60 min.
- Avg. Weekday Boardings/Alightings
  - 3 or fewer
  - 4 - 10
  - 11 - 30
  - 31 - 100
  - 101 - 300
  - 301 - 900
  - More than 900
- Transit Centers
- High Equity Area†
- Schools and Universities
- SA Tomorrow Sub-Area
- Railroads
- Streams
- Parks

Transit



# Transit Questions

## CHALLENGES

- How easy or hard is it for you to get to the nearest bus stop or transit center?
- Are there places in the neighborhood where it's especially hard for kids, older adults, or people with disabilities to access transit?
- Are there places where you feel unsafe walking to transit—because of traffic, lack of lighting, or other concerns?

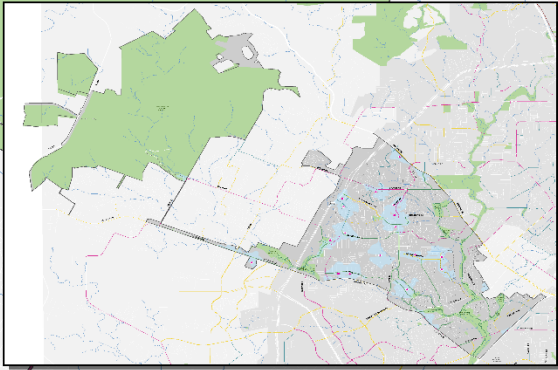
## OPPORTUNITIES

- What would make the walk or bike to transit stops feel more comfortable (e.g., shade, lighting, benches)?
- Have you seen good examples in other parts of the city or other cities where transit access felt easy and safe?
- Where are locations in your community that you see a high number of transit users?



You have **10 minutes** for discussion.

Full Study Area including Government Canyon



West Northwest  
Community Area

## Bike & Ped

Existing bike facilities  
 Protected Bike Lane or Cycle Track  
 Shared Used Path  
 Traditional or Buffered Bike Lane

San Antonio Bike Plan Network  
 Neighborhood Network  
 Primary Network  
 Visionary Network

--- Sidewalk Gaps  
 10-minute school walk-shed

Schools and Universities

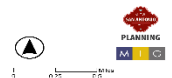
SA Tomorrow Sub-Area

Railroads

Streams

Parks

**Bike/PED**



# Bike/Ped Questions

## CHALLENGES

- Where do you walk or bike regularly, and how safe or comfortable does it feel?
- Can you easily walk or bike to the places you need to go—like schools, parks, shops, or transit?
- Are there places where it's hard for people using wheelchairs, strollers, or walkers to travel safely?

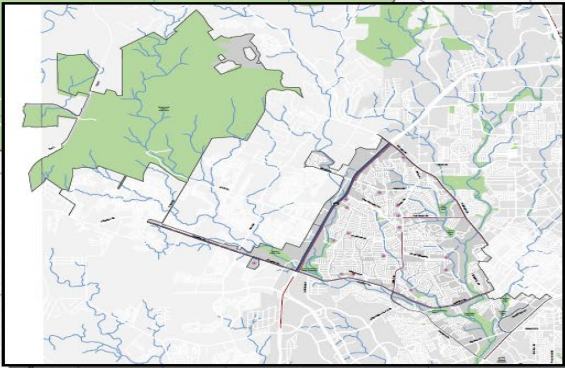
## OPPORTUNITIES

- Are there bike lanes, trails, or bike racks missing where you need them? What about lighting, shade, or benches?
- What's one place or street where walking or biking could be made easier or safer?
- Have you seen great places in other neighborhoods or cities that could inspire improvements here?



You have **10 minutes** for discussion.

Full Study Area including Government Canyon



# Freight and Congestion

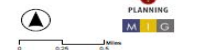


West Northwest Community Area

## Freight & Congestion

- Submitted Traffic Incidents (Waze)
- Traffic Jams (Waze)
- Average Annual Daily Truck Traffic (AADTT)  
More than 1,000 trucks
- Average Annual Daily Traffic (AADT)  
More than 20,000 total vehicles
- Schools and Universities
- SA Tomorrow Sub-Area
- Railroads
- Streams
- Parks

\* Where incidents are placed submitted by the app's users where they observed congestion.  
\*\* Where Traffic Jams are symbols of congestion identified by the app by comparing user reports and locations with slow movement speeds.



# Freight and Congestion Questions

## CHALLENGES

- Where do you regularly see large trucks or delivery vehicles in your neighborhood? (e.g. truck parking)
- Are there places where delivery trucks block bike lanes, sidewalks, or driveways?
- What streets or intersections experience the worst traffic congestion?

## OPPORTUNITIES

- What location is your top priority for addressing traffic jams and bottlenecks?
- Are there intersections or signal timings that could be adjusted to improve traffic? What about turn lanes or traffic circles?
- Where would clearer signage (e.g., "No Trucks," "Loading Only") help guide freight more effectively?



You have **10 minutes** for discussion.





# SA TOMORROW

## Mobility Mapping and Strategies Discussion





# SA TOMORROW

## Next Steps

# Next Steps

## Next Planning Team Meetings

- **Planning Team Meeting #4:** Wednesday, May 21 (Virtual)
  - Housing and Economic Development
- **Planning Team Meeting #5:** Wednesday, June 18 (Virtual)
  - Community Amenities and Public Spaces

## Questions

- Zack Magallanez
- Zack.magallanez@sanantonio.gov
- 210-207-7681



# West Northwest Community Area Plan Planning Team Meeting #3

Wednesday, April 23, 2025  
UIW School of Rehabilitation Sciences  
3:00-5:00 PM



PLANNING



Cambridge Systematics, Inc.

Bowtie

Economic & Planning Systems, Inc.

Auxiliary Marketing Services

Mosaic Planning and Development Services

Worldwide Languages

Able City