



West Northwest Community Area Plan Planning Team

Meeting #5

Wednesday, June 18, 2025

Virtual via Zoom

3:00PM-5:00PM



PLANNING



Cambridge Systematics, Inc.

Bowtie

Economic & Planning Systems, Inc.

Auxiliary Marketing Services

Mosaic Planning and Development Services

Worldwide Languages

Able City

Get Ready For The Meeting!

Correct your name by clicking the three dots near your profile tile and select change your name.

Put your name and the organization you represent in the chat.

If you have any questions during the meeting, you can email Chris Ryerson at Chris.Ryerson@sanantonio.gov



Unmute/Mute

Please stay on mute unless you have something you want to say. The facilitator may mute you if there is noise on your line.

Video on/off

It is useful to be able to see each other, please use video if you are able and comfortable.



Audio



Video

Participants 2

Chat

React

Show captions

English

More

Leave



Mute indication

Unmute at bottom left or at the top right of your picture

Unmute



Options:

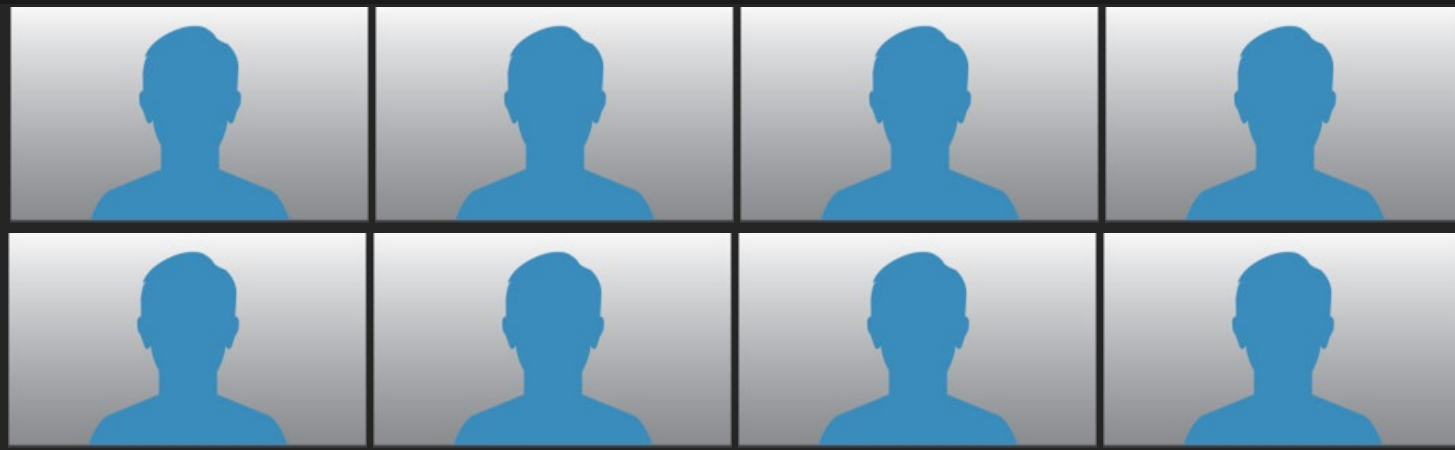
Click the three dots and select change your name



Name

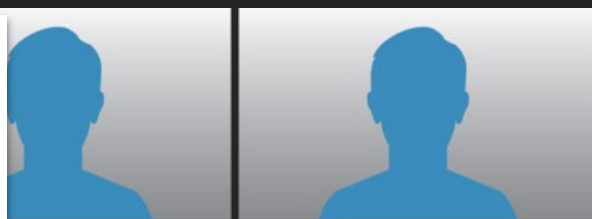
Highlighted

Currently speaking



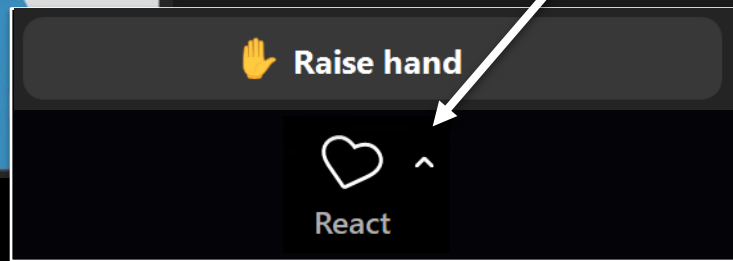
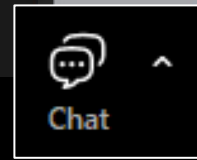
Chat

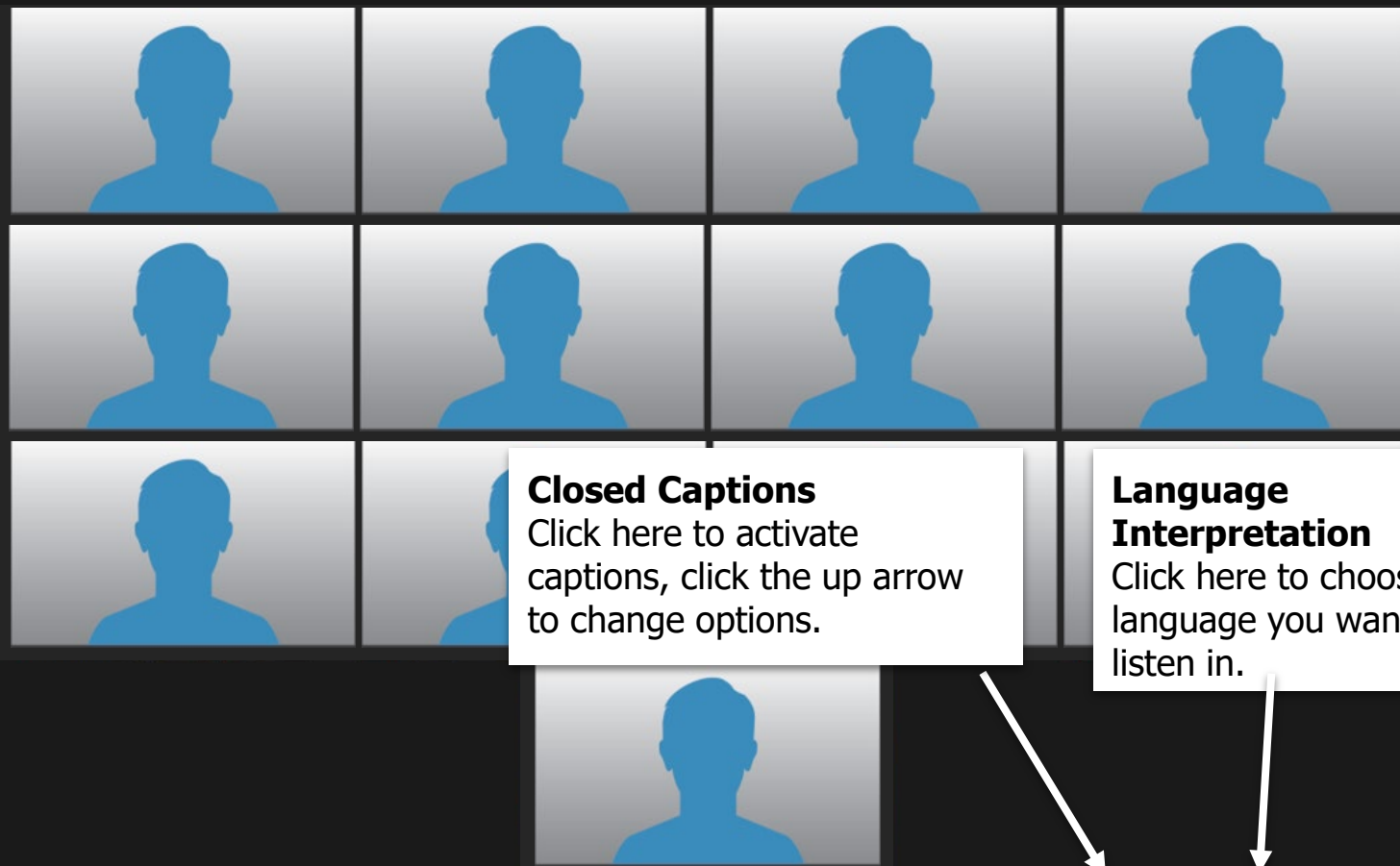
Click here to open a chat window to send messages to the host or all participants.



Reactions

Click here to open a menu, you can raise and lower your hand here.



**Closed Captions**

Click here to activate captions, click the up arrow to change options.

Language Interpretation

Click here to choose the language you want to listen in.



Audio



Video



Participants 2



Chat



React



Show captions



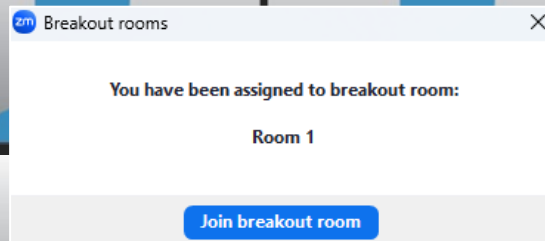
English



More



Leave



Breakout Rooms

If the host has assigned breakout rooms, you will see a pop-up to join. You can click here to join as well.

Bamboo Paper

Picture the possibilities!
5.15.2020 PART III

1 PLANNING
PLANNING FOR THE NEW URBANITY & SUPERBIA
➤ MORE MIG TOOLKITS!
- Support Local Communities
➤ SOCIAL DISTANCING GUIDELINES
➤ SCIENCE FOCUS
MIG TACTICAL TEAMS
VIA ZOOM
(CROSS SERVICE AREA)

2 PLANNING
INCLUSIVE APPROACH TO RESILIENCE
➤ AFFORDABLE HOUSING - TINY HOMES
RETHINKING & REPURPOSING
SPACES - REUSE
- DEVELOPERS, NON-PROFITS,
NGOS
- STRATEGY, PLANNING, ZONING, ETC

4 DESIGN
ROUTING EXISTING INFRASTRUCTURE
IN NEW WAYS

5 COMMUNICATIONS
MESSAGING & BRANDING FOR COVID
RESPONSE AND SLOW OPENING

6 COMMUNICATIONS
SOCIAL MARKETING FOR CULTURAL &
BEHAVIORAL CHANGE THAT CREATES
A BETTER WORLD

Shared Screen

Divider Bar

Slide this bar left to see more people, right to enlarge the shared screen.

Speaker Gallery and Side-by-Side View

Click here to see others in a grid, focus on the speaker or set presenters screen to appear on the left

This Meeting Will Be Recorded





SA



TOMORROW

Introductions



PLANNING

M I G

WNW Community Area Plan Project Team



City of San Antonio, Planning Department

Chris Ryerson, Planning Administrator

Zack Magallanez, Project Manager



MIG

Marcia Boyle, Co-Project Manager

Marco Hinojosa, Co-Project Manager

Zachary Field, Senior GIS Analyst



San Antonio River Authority

Mikel Wilkins, Senior Engineer

Meeting Sequence



Meeting Objectives

- **San Antonio River Authority Presentation**
- **Overview of Community Amenities and Public Spaces (CAPS)**
- **CAPS Accessibility and Equity Analysis**
- **CAPS Activity**
- **Focus Areas Update**



SA TOMORROW

Overview of Community
Amenities and Public Spaces



PLANNING



What Makes A Complete Community?

- **Built Form, Land Use & Urban Design**
 - Define the character of a place
- **Mobility & Access**
 - Provide connections to and from places within the City
- **Community Amenities & Public Space**
 - Tangibles and intangibles that contribute to and define the Quality of Life of places within the City
- **We will look at the entire plan area including priority locations / Focus Areas.**

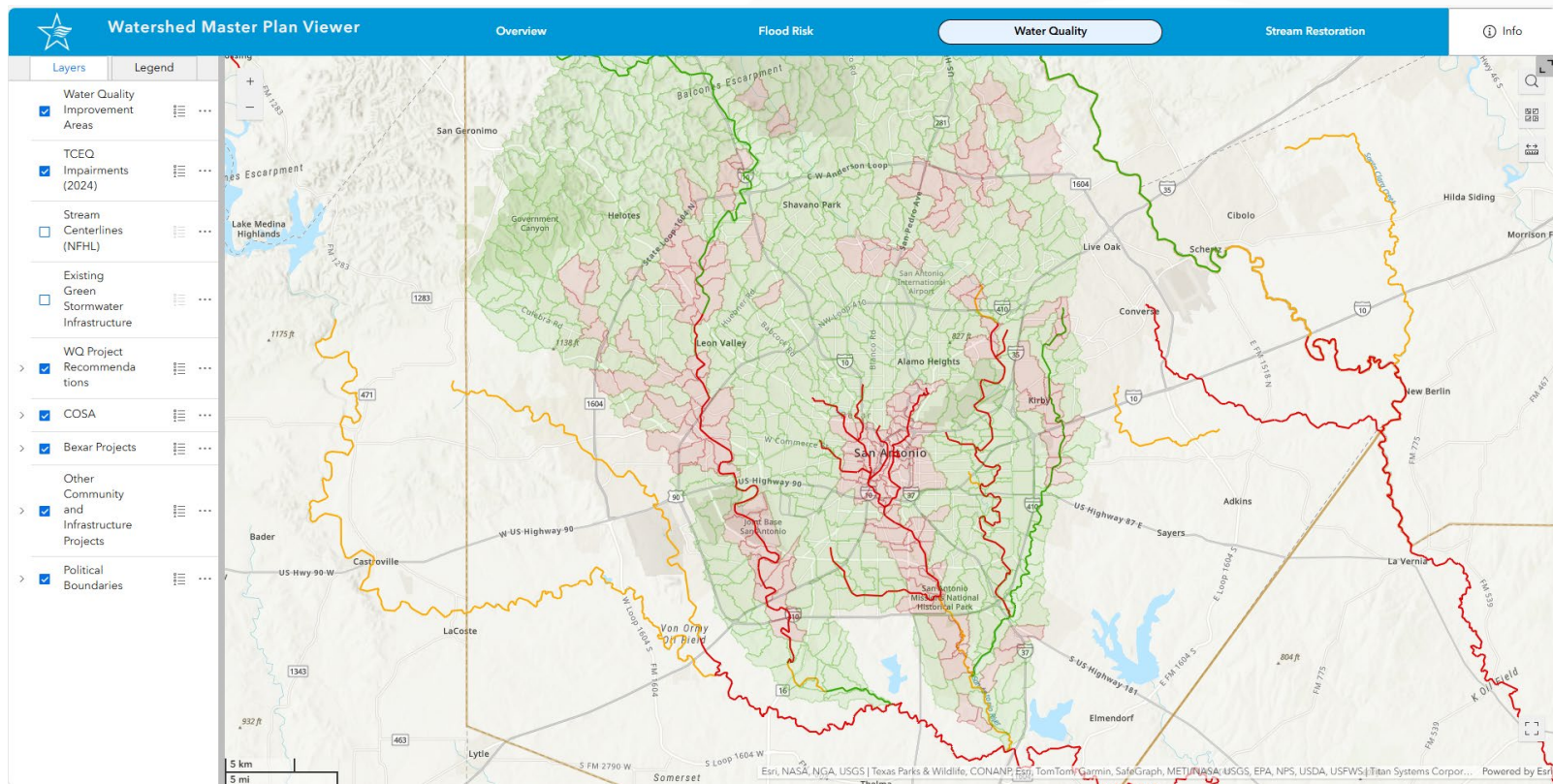
SA TOMORROW

Introduction to Nature Based
Solutions

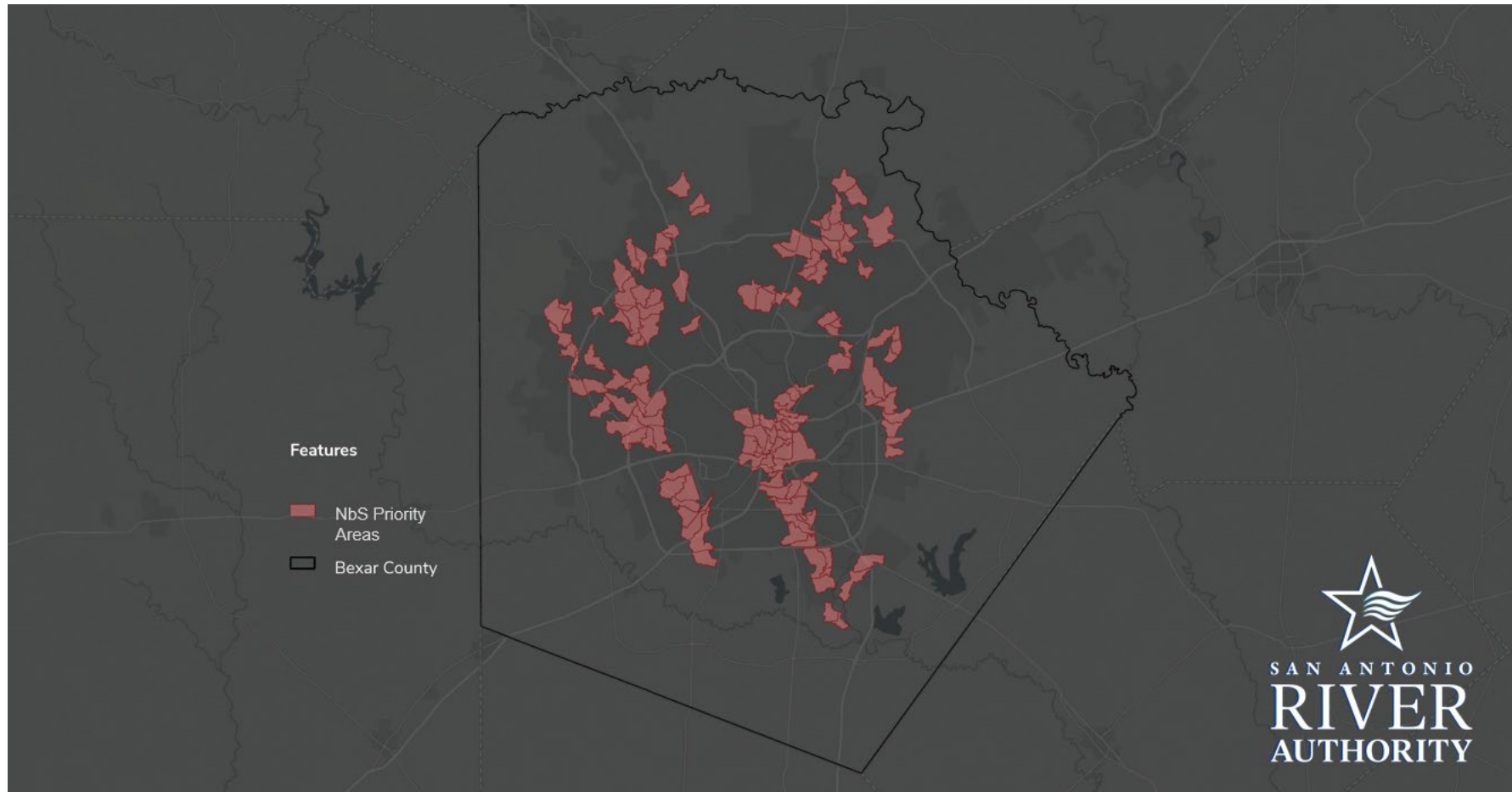
West-Northwest Community Area



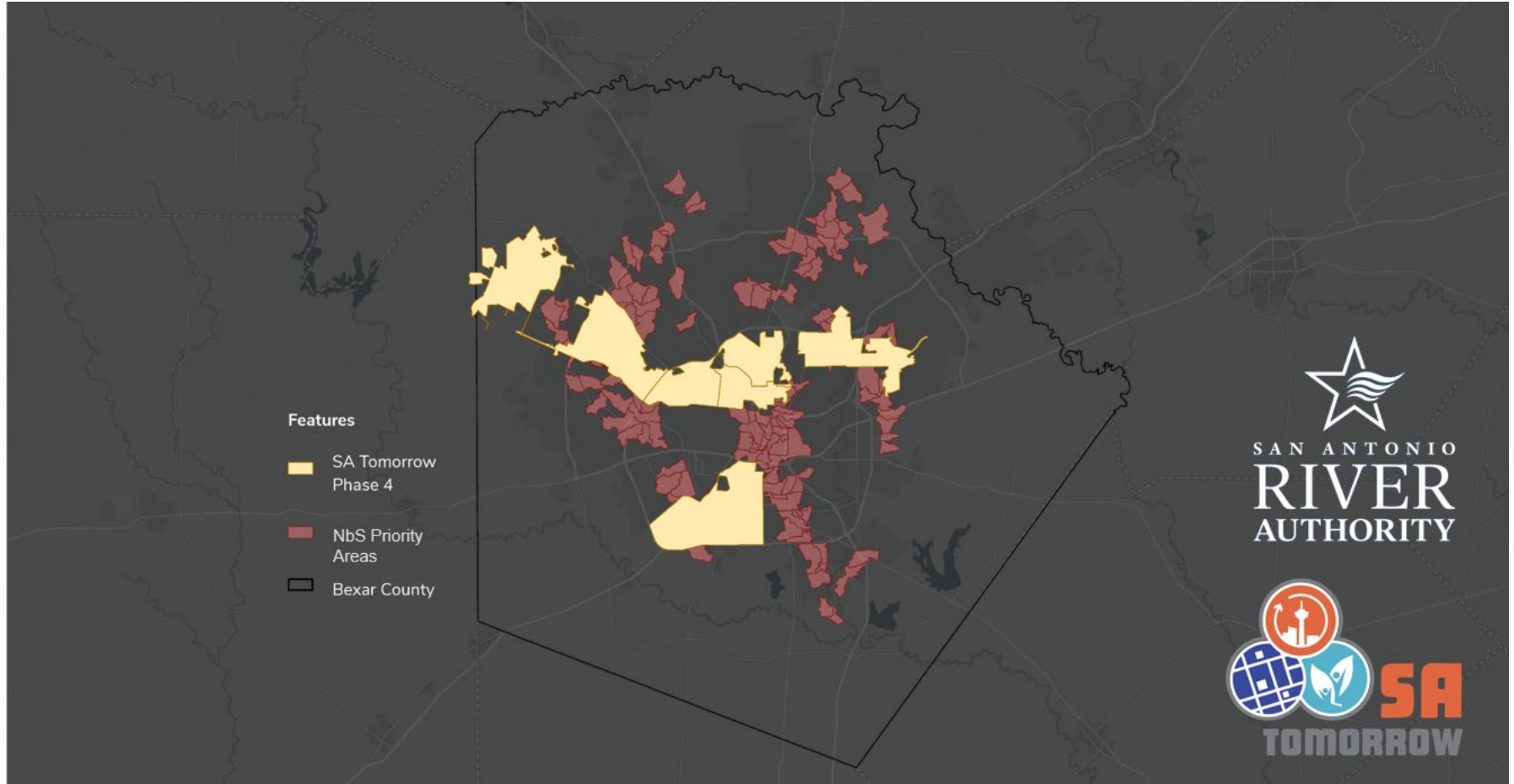
Watershed Master Plan Viewer



Nature-based Solutions Priority Areas



Nature-based Solutions Priority Areas

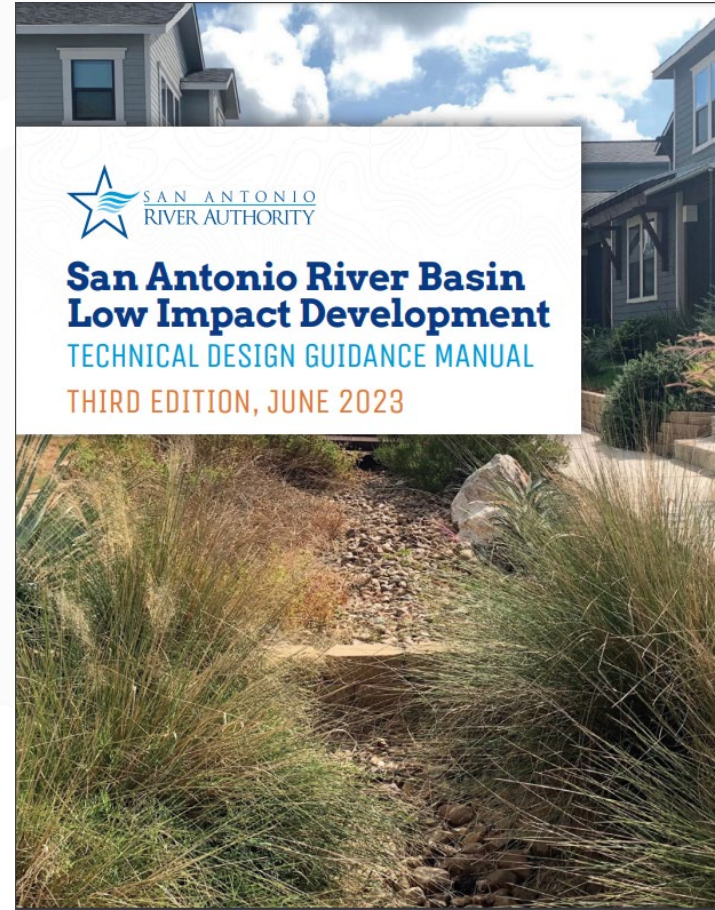


What Are Nature-based Solutions?



What Are Nature-based Solutions?

- NbS, an umbrella concept:
 - Green Infrastructure, Low Impact Development, Natural, and Nature-based features, Stormwater BMPs
 - Imitate or preserve natural features and/or processes to increase environmental sustainability and resilience
 - Hybrid engineered systems or preserved natural systems
 - Provides co-benefits



What Are Nature-based Solutions?

- **Co-benefits:**
 - Water Quality Improvements
 - Bacteria, TSS, Oil/Grease, Metals, Nutrients, and Heat
 - Infiltration and peak runoff reduction
 - Habitat and Biodiversity
 - Cooling and Air Quality
 - Beautification, Recreation, and Education



Nature-based Solutions Example



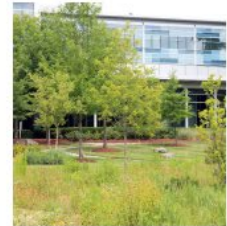
Nature-based Solutions Example



Nature-based Solutions Example



Nature-based Solutions Example

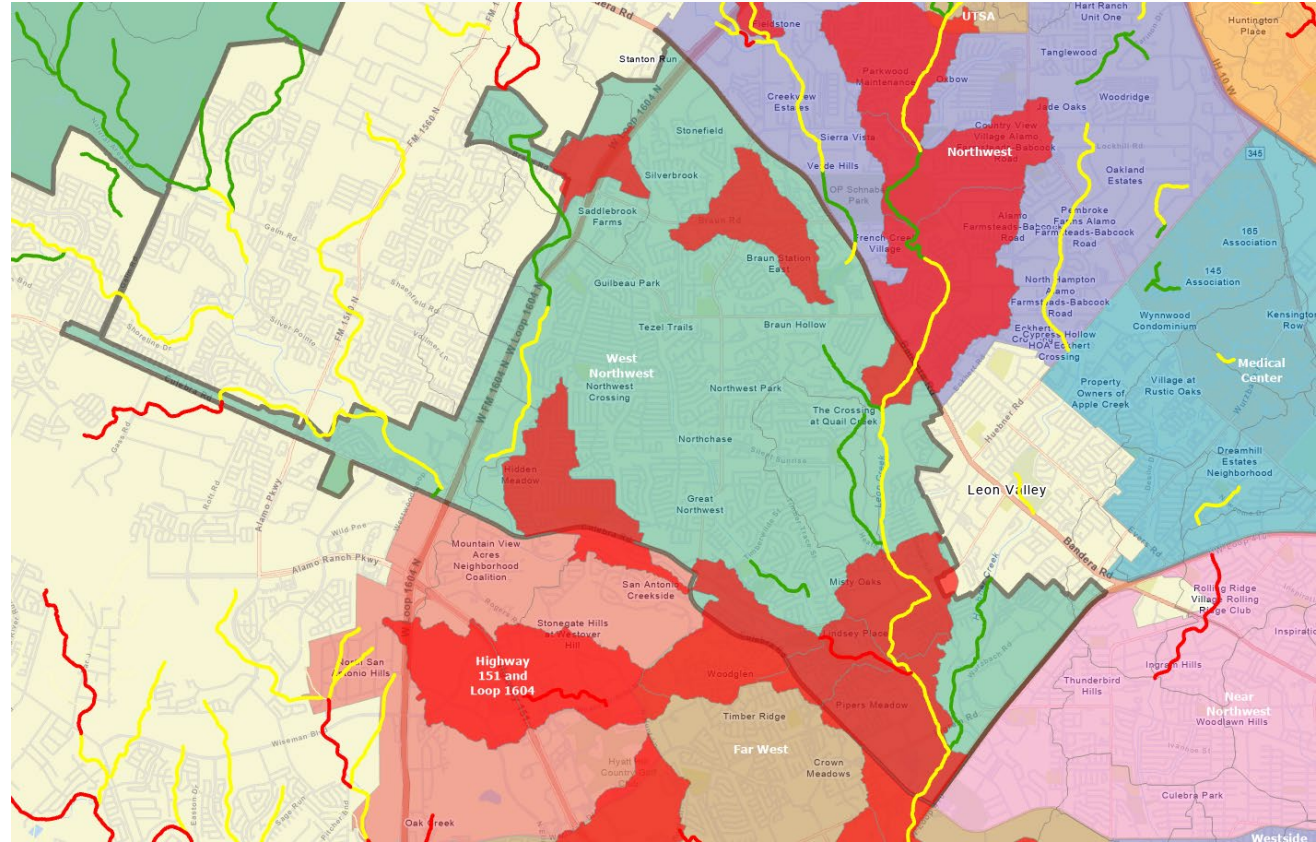


Nature-based Solutions Example



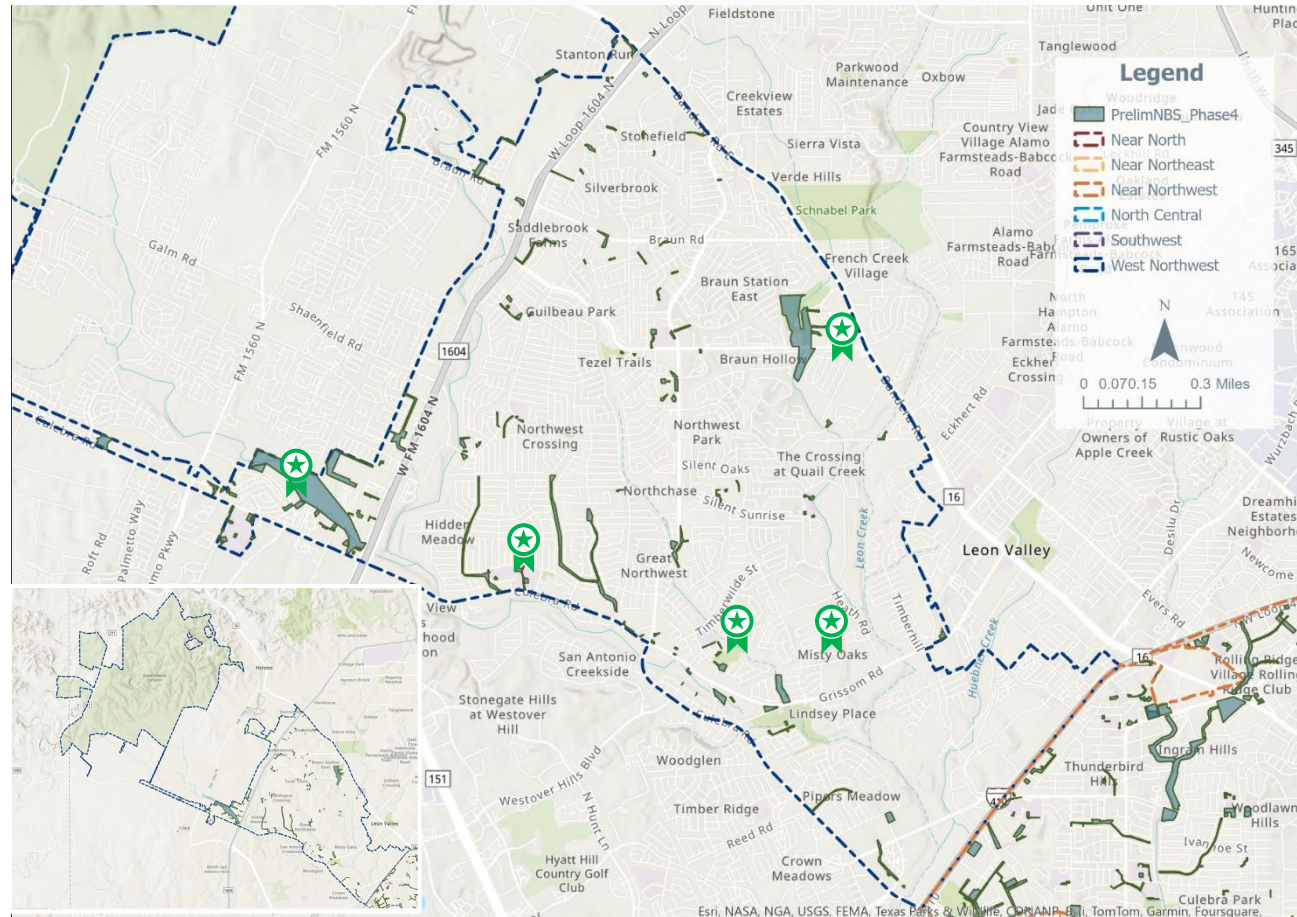
Nature-based Solutions Opportunity Areas

- Important **areas of opportunity** to implement nature based solutions.
- Stream restoration potential
 - Culebra Creek
 - Lower French Creek
 - Helotes Creek
 - Leon Creek
 - Huebner Creek



Nature-based Solutions Opportunity Areas

- Important **areas of opportunity** to implement nature based solutions.
- 144 sites identified
- Highlights:
 - Culebra Creek Park
 - Nani Falcone Park
 - Oscar Perez Memorial Park
 - French Creek Greenway
 - Culebra Creek Greenway
 - Leon Creek Greenway
 - Burke Elementary
 - Brauchle Elementary
 - Carson Elementary
 - Zachry Middle School
 - Misty Oaks Community Center



Types of Community Amenities & Public Spaces

Health Improvements



Recreation Centers



Hospitals



Farmers Markets



Community Gardens



Outdoor Recreation



Community Fitness

Types of Community Amenities & Public Spaces

Placemaking Improvements



Lighting



Street Activation



Public Art



Gateways



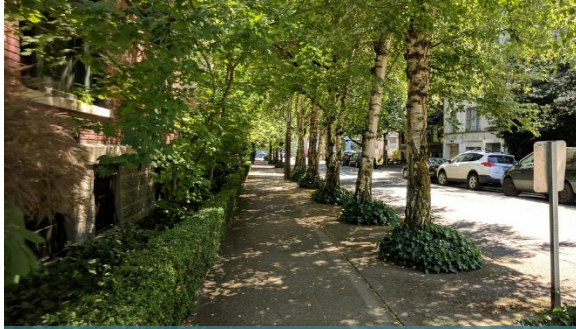
Wayfinding



Public Realm Activation

Types of Community Amenities & Public Spaces

Comfort Improvements



Enhanced Tree Canopy



Cooling Centers



Resting Areas



Splash Pads



Pools



Shade Structures

Types of Community Amenities & Public Spaces

Community Spaces Improvements



Community Centers



Pocket Parks/Plazas



Schools



Park/Open Space



Libraries



Cultural Centers

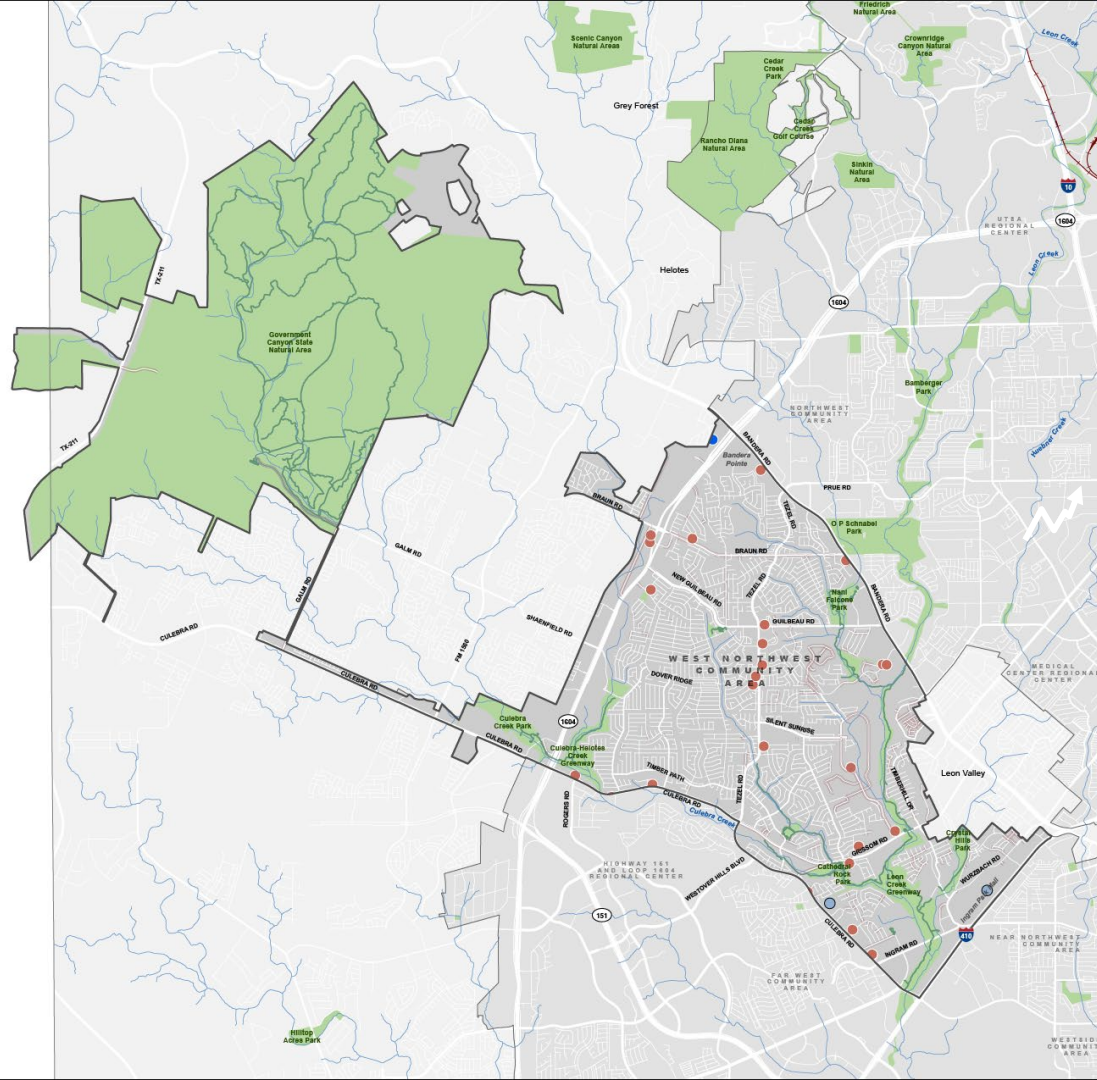
SA TOMORROW

CAPS Accessibility and Equity Analysis



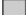









PLANNING

M I G



West Northwest Community Area

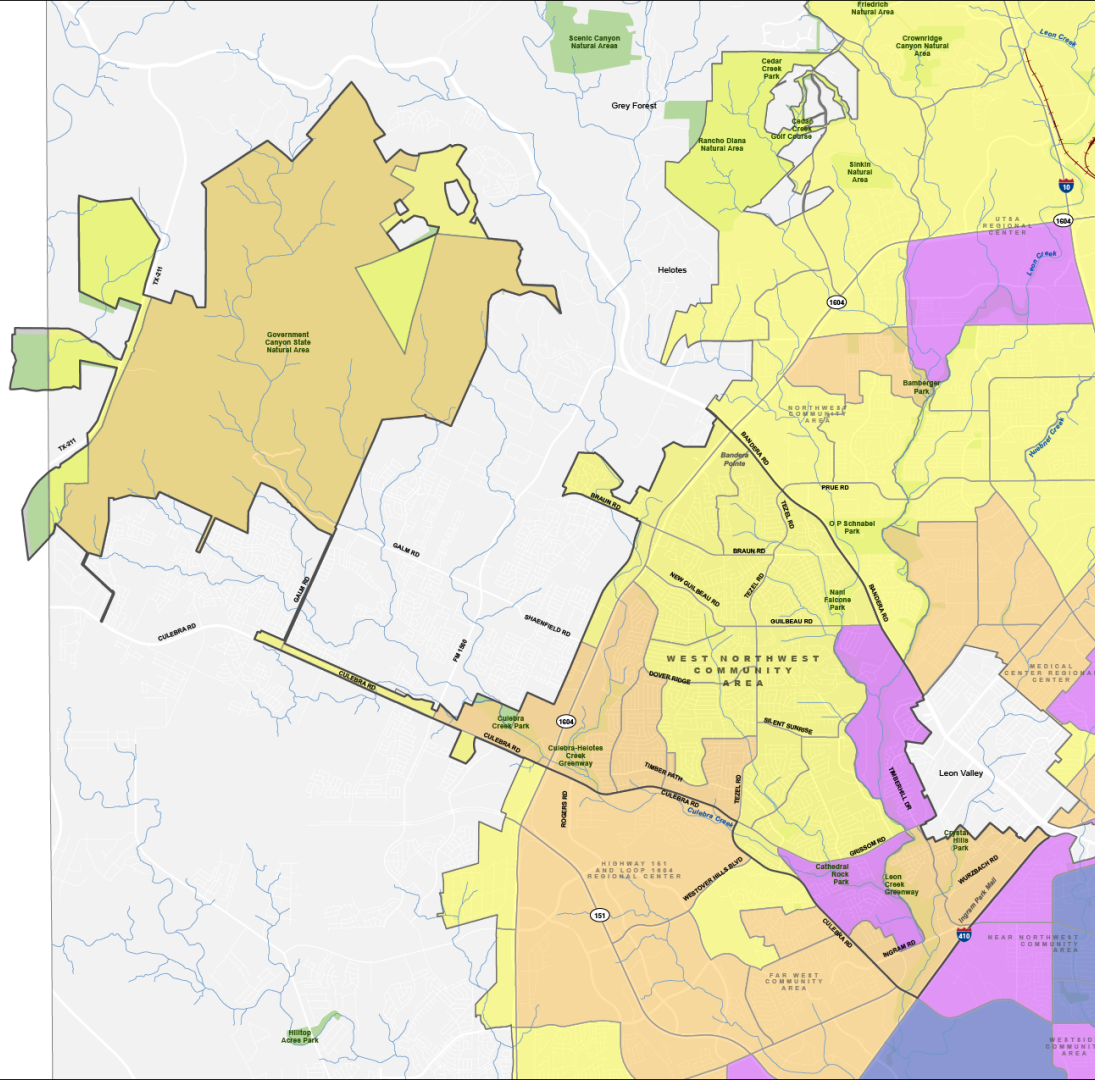
Community Amenities and Public Spaces

-  SA Tomorrow Sub-Area
-  City of San Antonio
-  Rivers or Streams
- Amenities & Public Spaces**
-  Public or Private Park or Open Space
-  Trails
-  Movie Theater
-  Place of Worship
-  Senior Center
- Physical Barriers**
-  Rail Line
-  Incomplete Sidewalks



0 1/4 1/2 1 Miles





West Northwest Community Area

City of San Antonio Equity Map (by Census Tract)

- SA Tomorrow Sub-Area
- City of San Antonio
- Rivers or Streams
- Public Parks

Equity Score

- 2 - 4
- >4 - 6
- >6 - 8
- >8 - 10

Equity Score is determined by an assessment of Median Household Income and Percent of People of Color in each Planning Sub-Areas.*

**Includes all population that does not self-identify as "White, Non-Hispanic" and includes all Hispanic/Latinx population regardless of race.*



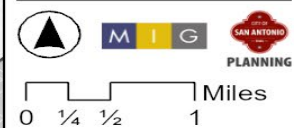
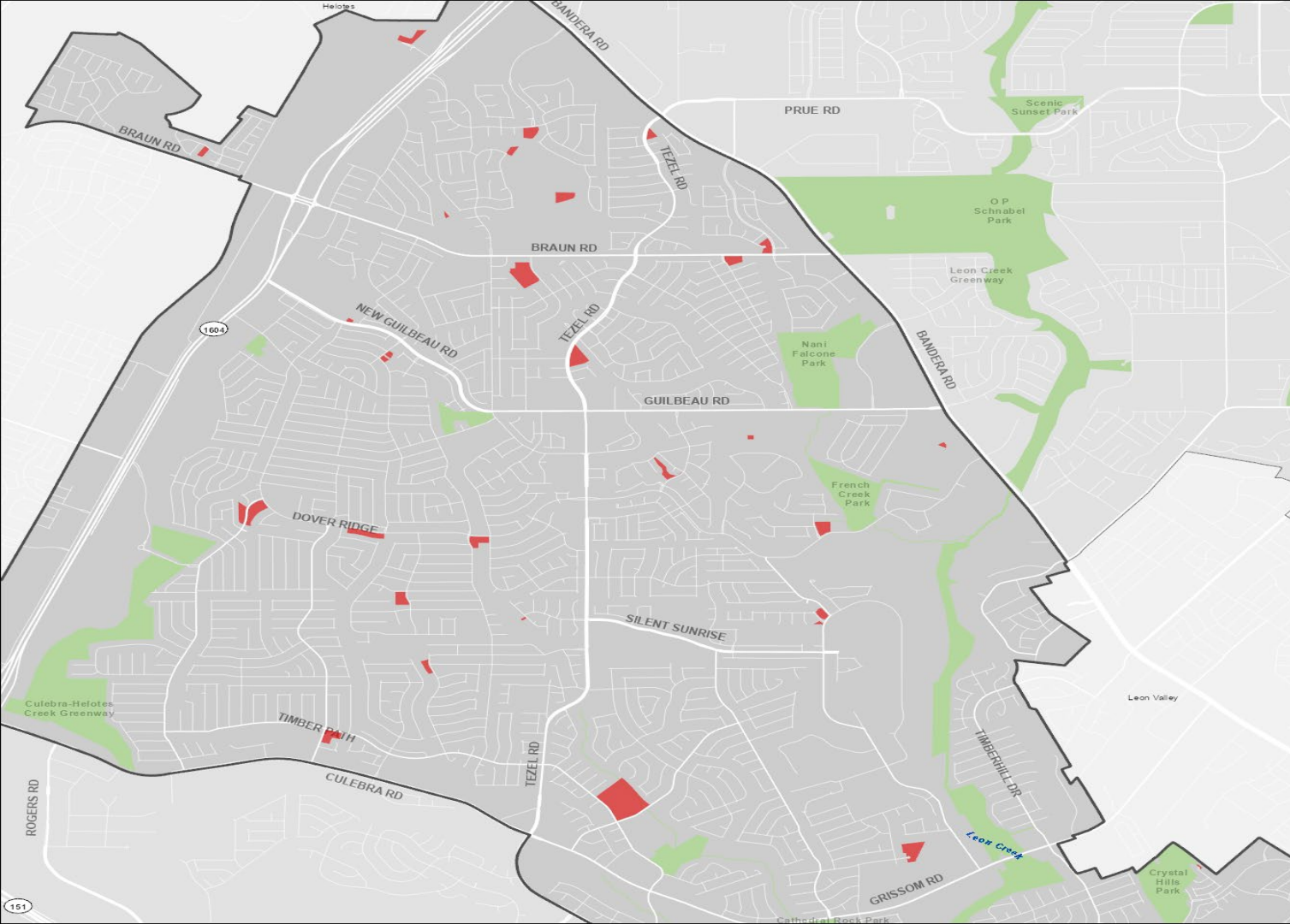
0 1/4 1/2 1 Miles

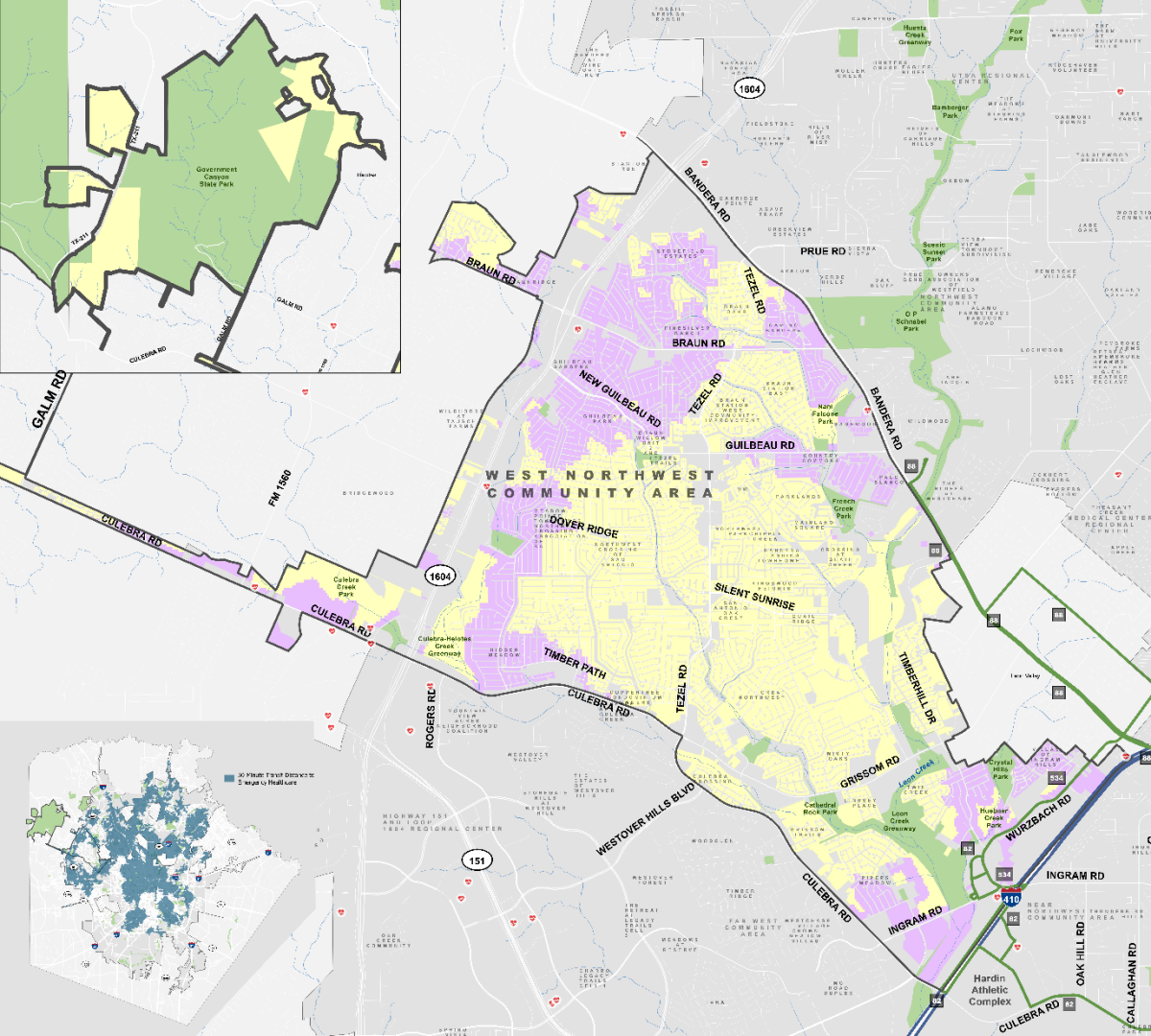


West Northwest Community Area

Private HOA Recreation Spaces

- HOA Recreational Space
- SA Tomorrow Sub-Area
- City of San Antonio
- Railroads
- Parks





West Northwest Community Area

Emergency Healthcare Access

High Equity Score Areas*

Emergency Healthcare Facilities

30-Minute Transit Travel Time to Emergency Healthcare

Residential Area Beyond 30-Minute Transit Travel Time to Emergency Healthcare

SA Tomorrow Sub-Area

High Frequency Transit Routes Frequency (In Minutes)

12
15
20

Route #

Rivers or Streams

Public Parks

City of San Antonio

* High Equity Score Areas ≥ 8
For more information visit:
sanantonio.gov/Equity/Initiatives/Atlas



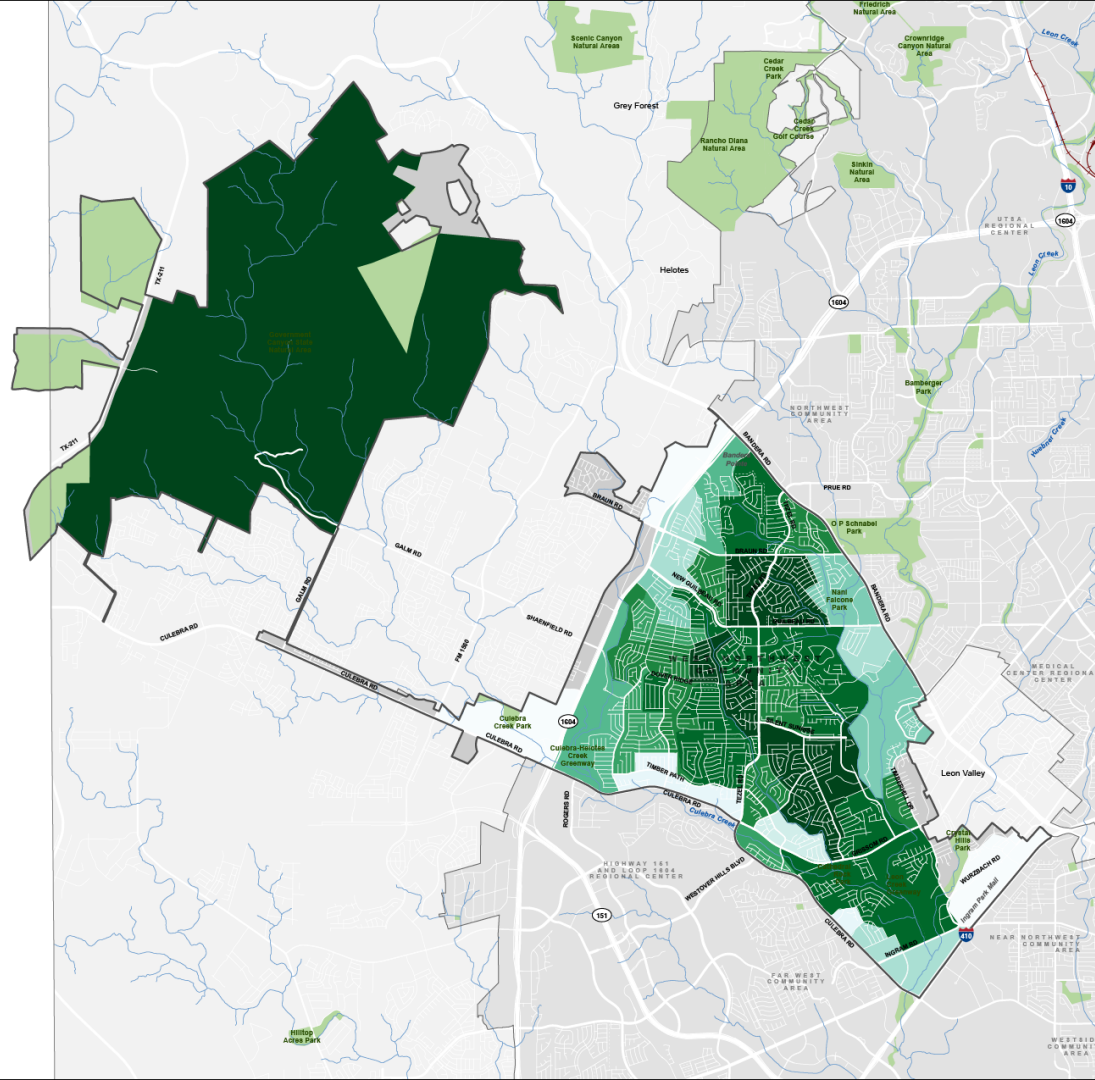
PLANNING



0 1/4 1/2 1 Miles

Residents Within 30-min Transit Distance to Emergency Healthcare

City-Wide | 42.5%
West Northwest | 22.8%



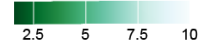
West Northwest Community Area

Tree Coverage

- SA Tomorrow Sub-Area
- City of San Antonio
- Rivers or Streams
- Public Parks

Tree Coverage Score

Relative tree canopy coverage



Lower values indicate Census block group areas with denser tree coverage, and higher values indicate a limited tree shading effect.

**Residents that live in
Census Block Groups with
Relatively Dense Tree
Coverage (scores below 5)**

City-Wide | **41%**

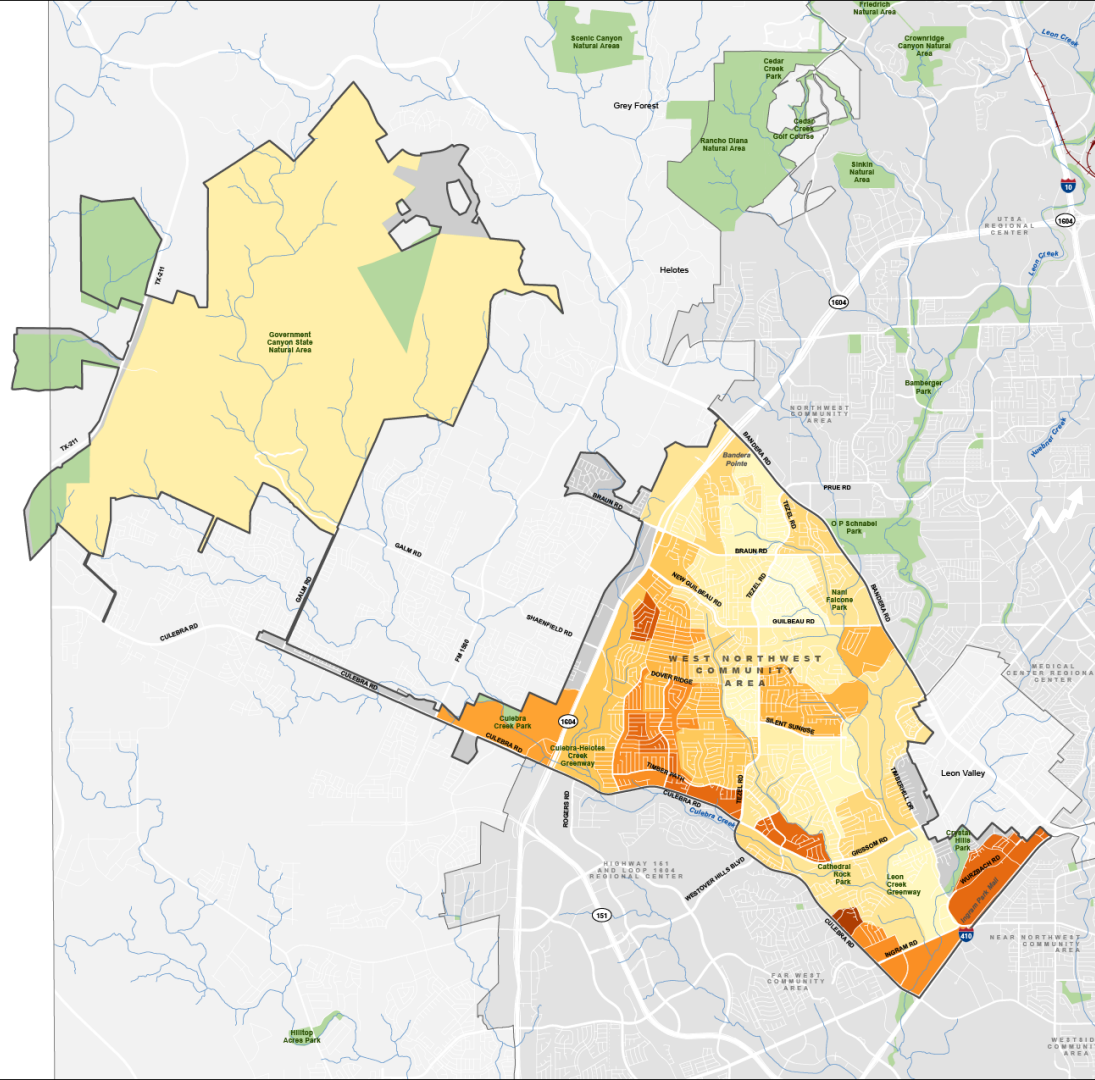
West Northwest | **67%**

Sources:

- *An Assessment of Urban Heat Vulnerability in San Antonio, TX, Sustainable, Pervasive Urban Resilience (SPUR) Center at UTSA*
- *American Community Survey 2023 5-Year Estimates, Census Bureau*



0 1/4 1/2 1 Miles

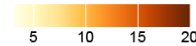


West Northwest Community Area

Heat Vulnerability

- SA Tomorrow Sub-Area
- City of San Antonio
- Rivers or Streams
- Public Parks

Heat Vulnerability Score
Combines heat ranking with equity scores (income and race)



Higher scores indicate Census block group areas with higher heat vulnerability, combining heat rankings (scored 1-10), and income and race characteristics (scored 2-10).



0 1/4 1/2 1 Miles



**Residents that live in Census
Block Groups that are
Considered Low Concern
Areas (scores below 10)**

City-Wide | **37%**

West Northwest | **62%**

Sources:

- *An Assessment of Urban Heat Vulnerability in San Antonio, TX, Sustainable, Pervasive Urban Resilience (SPUR) Center at UTSA*
- *American Community Survey 2023 5-Year Estimates, Census Bureau*



SA TOMORROW

Focus Areas Update



PLANNING



What are Focus Areas?

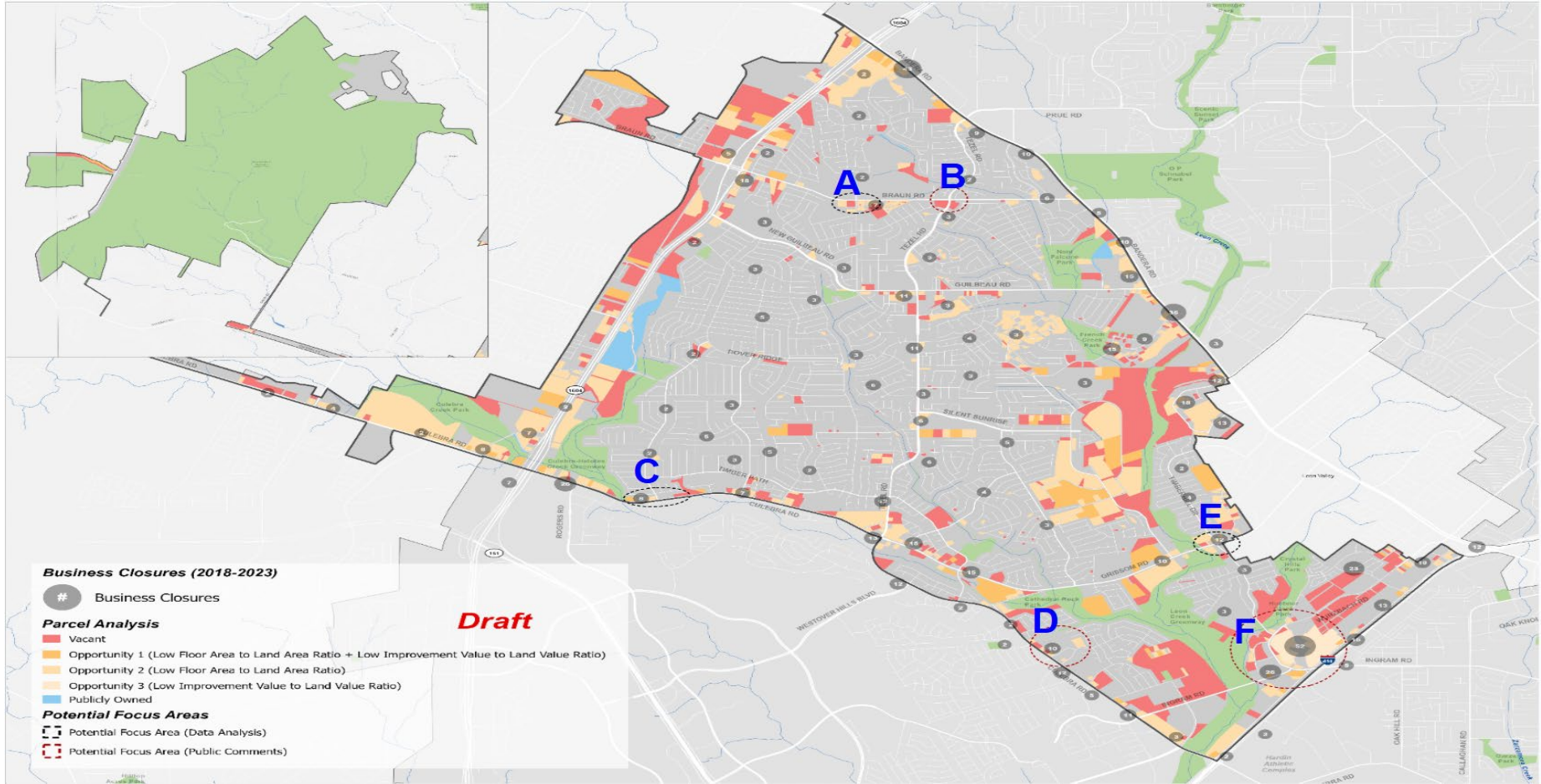
- Important **areas of opportunity** to direct future investments, support, or improvements.
- Each Focus Area includes:
 - A unique vision
 - Analysis of challenges and opportunities
 - Key investments and improvements
 - Focus Area Map
 - May include graphics and illustrations

“Focus areas identify key locations where future investments or other improvements are desired.

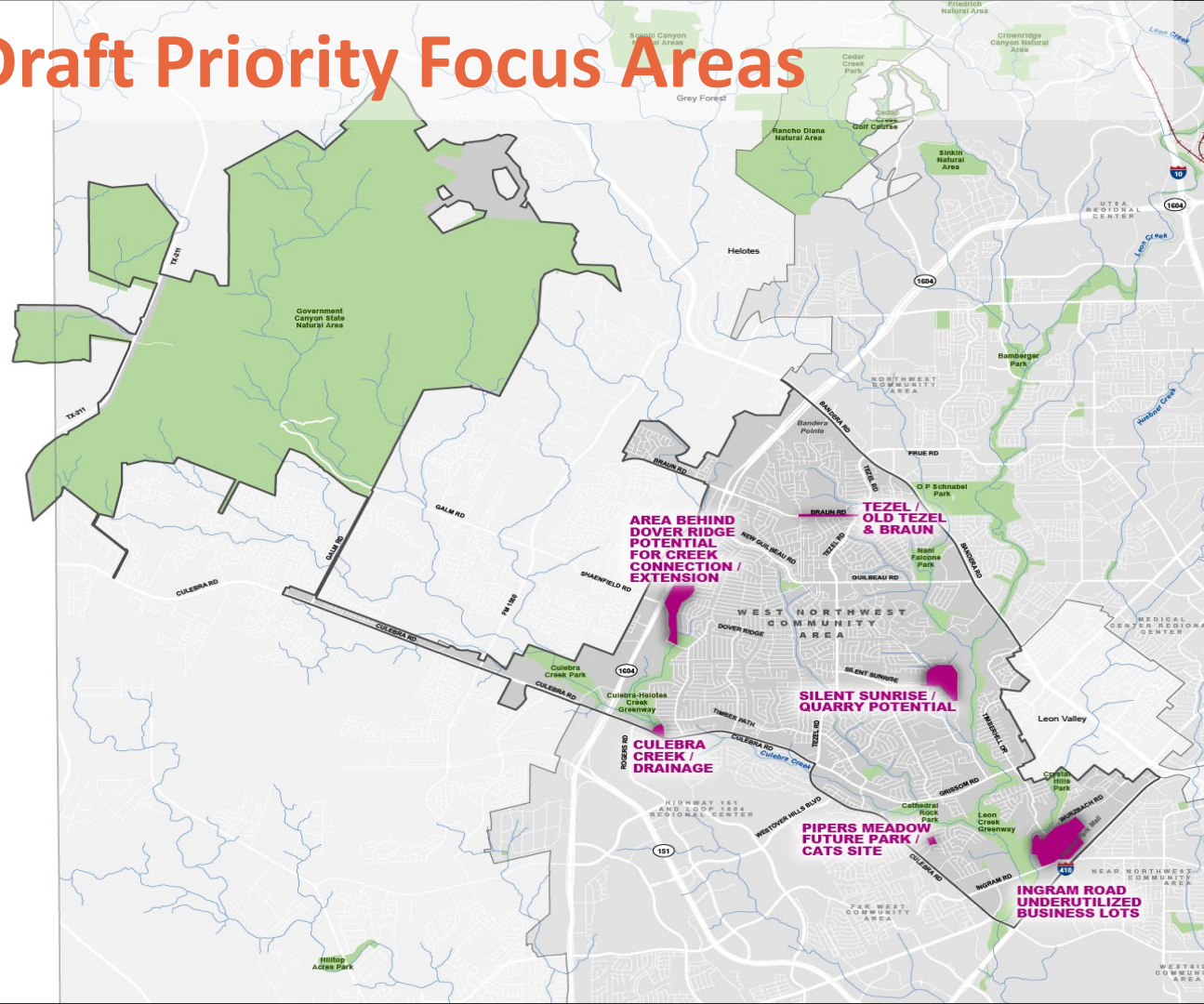
“While many recommendations in this plan are long-term and somewhat conceptual, the focus areas section offers more detailed visions for desirable ways in which these areas could be developed or evolve over time to help meet a variety of community goals.

“While this section has detailed renderings, any specific style choices are for illustrative purposes only to show potential, rather than to prescribe development design.”

PT#2 Preliminary Focus Areas



Draft Priority Focus Areas



West Northwest Community Area

Focus Areas

- SA Tomorrow Sub-Area
- City of San Antonio
- Rivers or Streams
- Public Parks
- Draft Focus Areas



0 1/4 1/2 1 Miles



SA TOMORROW

CAPS Mentimeter and Mapping Activities



PLANNING





SA TOMORROW

Next Steps



PLANNING



West Northwest Website

Westnorthwest.SACompPlan.com



[Home](#) [About](#) [Get Involved!](#) [Plan Document](#) [Resources](#) [En español](#)

A photograph of a trailhead sign for Howard W. Peak. The sign is dark brown with white text and a map. It is set against a background of green trees and a wooden fence. The text on the sign includes 'VIA TRANSIT CENTER TRAILHEAD', 'CITY OF SAN ANTONIO', and 'HOWARD W. PEAK'.

**SA Tomorrow
West Northwest
Community Area**

Next Steps

- Upcoming Meetings
 - Land Use Workshops: August and September (In person)
 - Planning Team Meeting #6 (Focus Areas): October (In Person)
 - Community Meeting #2: Before Winer Break
- Questions
 - Zack Magallanez, Project Manager
 - Zack.magallanez@SanAntonio.gov
 - (210) 207-7681



West Northwest Community Area Plan Planning Team Meeting #5

Wednesday, June 18, 2025

Virtual via Zoom

3:00PM-5:00PM



PLANNING



Cambridge Systematics, Inc.

Bowtie

Economic & Planning Systems, Inc.

Auxiliary Marketing Services

Mosaic Planning and Development Services

Worldwide Languages

Able City